

LYNMARK ST CLARE

MSCANM11751400 200MS00124
born June 15th, 2013 Purity: 90.7%
bred by: Lynmark Farms, Norwood, ON

April 2014 Parent Averages:

+1587 LPI +512M +15F -0.10% +12P -0.05%
+7 Conf +9 Mammary 2.86 SCS

To be released in Fall 2014 through
Semex Alliance and CMSS Syndicates



Sire: Clarefield Mocha

+1806 LPI (Apr'14) 56% Rel.
+616M +16F -0.13% +14P -0.05% +12 Conf
#3 LPI Sire in Canada (Apr'14)
25 daug. classified: 7 VG 15 GP 3 G

PGS: Glenbrook Ultimate

S: Meadowhaven Daisys Prince
D: Glenbrook Graceful 5th

PGD: Worthwhile Millie EX

S: Venvale Sovereign
D: Glen Ayr Millie 6th

Dam: Lynmark NS Clarica EX-90-4E

+1368 LPI (Apr'14) 54% Rel.
+407M +13F -0.06% +9P -0.04% +2 Conf
Reserve Grand Champion, National Show 2007
1st Mature Cow, National Show 2010
Production Award Winner, National Show 2010
2-1 305 7430M 244F 3.3% 231P 3.1% (331-268-316)
3-2 305 6747M 254F 3.8% 226P 3.4% (259-240-266)
4-5 305 8328M 314F 3.8% 280P 3.4% (271-253-280)
6-1 305 8378M 298F 3.6% 271P 3.2% (278-248-277)
7-5 305 9332M 349F 3.7% 301P 3.2% (285-268-281)
9-0 305 8965M 320F 3.6% 275P 3.1% (295-269-278)
Has always been more than +120 Composite BCA pts
above herdmates (maximum of +270)
Lifetime: 6 lact. 56,249M 2074F 3.7% 1854P 3.3%

MGS: Glenbrook Storm Ruler

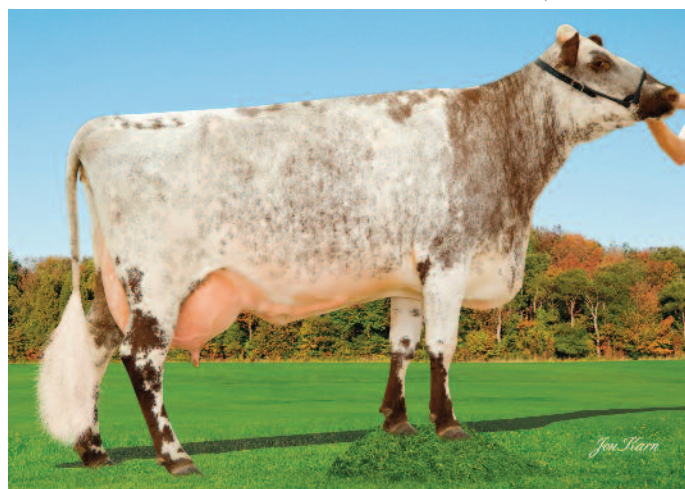
+946 LPI 85% Rel. (Apr'14)
-245M -10F -0.01% -6P +0.01% +3 Conf
76 daug classified: 5EX 17VG 38GP 15G 1F
S: Wilmington Virgins Ruler
D: Glenbrook Graceful 5th

MGD: Hauxwell Clara 20th EX-90

Two Star Brood Cow
5-5 305 8362M 3.7% 256P 3.1% (259-241-244)
Lifetime: 10 lact. 80,860M 2875F 3.6% 2575P 3.2%
S: Hauxwell North Star
D: Hauxwell Clara 15th VG-85 1*

Daughter: Lynmark CD Clarity VG-85

3-10 305 9691M 530F 5.5% 315P 3.2% (341-461-338)




SEMEX[®]
Genetics for Life[®]

Pictured left: Lynmark NS Clarica EX-90-4E
Pictured in 2010