



NEWS • IDEAS • HOT TOPICS AND TRENDS

January means Base Changes to Proofs

Each January, the Canadian industry updates the reference group to which each animal is compared, genetically. The reference group - bulls born in the most recent 10 year period (colour breeds, 15 years) in which all have achieved proven status - will have a proof average of zero for each of the traits published. That group of bulls essentially advances by one year each year. Last year that base group was proven Holsteins bulls born between 1994 and 2003 – this year it is the proven group with birth years between 1995 and 2004.

That proof values for most bulls decline in January isn't really a reflection that their proof has changed substantially. Instead it has more to do with the reference group improving. Thus as the base group improves annually, individuals being compared to the group become less superior. The adjacent table summarizes the changes applied to the Holstein and Jersey base, which essentially is the change applied to all bull and cow indexes with the January proof update. Note that for Somatic Cell Score a negative change means we are still actually making progress since lower proof values for this trait are desired. Note as well that the negative

value for Daughter Fertility in Holsteins signals that the reference population is still losing ground on that trait making the best bulls look even better as a result.

Overall, most Holstein bulls can expect a drop of 144 points to their LPI value and Jersey bulls a slightly lesser drop of 91 points. That this annual drop continues to occur is in fact a good thing as it signals the extent to which we continue to improve the genetics in our national dairy herd.

2010 Base Changes

	HO	JE
LPI	144	91
Milk (kg)	90	35
Fat (kg)	1.9	1.3
Protein (kg)	2.6	1.2
Conformation	0.72	0.41
Mammary System	0.77	0.47
Feet & Legs	0.42	0.33
Dairy Strength	0.48	0.21
Rump	0.04	0.08
Herd Life	0.25	0.30
Somatic Cell Score	-0.03	-0.02
Daughter Fertility	-0.30	0.24

New Proofs

The next proofs will be released on January 12, 2010 in all countries that participate in international genetic evaluations. If you would like

a copy, send us your email address to proofrequest@westgen.com. You can also see all new information by visiting:

www.cdn.ca



Pregnancy Goal

With many parameters to look at on the Repromark report it is easy to feel a little overwhelmed with all of the information that is provided. Perhaps you have discovered there are opportunities to improve your herd's reproduction, or maybe you run a very efficient breeding program and are at the top of the list compared to your peers. Regardless of where you rank, **the goal of the Repromark report is to help you generate more pregnancies.**

Using tools like insemination risk, conception rate, pregnancy rate, help guide you to any area of reproduction that may need attention in your herd. At the end of the day your success will be directly reflected by your herd's calving interval. **A longer calving interval means a lower percentage of your herd at peak milk flow, fewer replacements, and potentially a higher rate of metabolic disease and transition cow challenges.**

With many areas now facing changing quota policies, many dairy producers are attempting to even out milk production through the year. One way to help manage this new challenge is to know how many cows you will need to calve each month so that your milk production remains steady. The **'Pregnancies/Month'** parameter on the Repromark report can help with this. The number in the **'Latest'** column represents the average number of new pregnancies created in the cow herd on a per month basis. The average is calculated based on the last 12 months of data. The number in the **'Goal'** column represents the number

of pregnancies that should be created per month in the cow herd to obtain a 13 month calving interval, which is considered optimal for a dairy herd.

A quick calculation to find out how many new pregnancies a month should be created on your dairy can be obtained by using the 10% rule of thumb. You should be creating enough pregnancies from your **entire** herd to represent 10% of your cow herd. For example if your herd is made up of 100 cows you should be creating 10 pregnancies per month, this would include pregnancies from your milking herd and heifers or replacements. Remember the 'Pregnancies/Month' in the Repromark report only includes pregnancies in the milking herd and not from the heifers or replacements.

In order to shorten your calving interval there are a few things that cannot change, the most obvious being the gestation length of the dairy cow which on average is around 285 days. What can be managed is how soon after calving the cow is bred back and conceives which is completely in your hands. Ideally each of your cows should have conceived by 110 days in milk meaning that if your voluntary waiting period is 60 days then you have a **50 day window to get each cow pregnant.** With a regular 21 day cycle you will have up to three breeding opportunities in this time so that each cow **conceives before 110 days in milk.** Aiming to achieve this level of reproductive efficiency may seem difficult but with the right management and tools it is achievable, and the profitability of your dairy will be greatly improved. Talk to your Westgen Rep if you are interested in receiving the Repromark report.

By Carl Barclay

Manager's Message



2010: Welcome to the Future

When I joined on with Westgen many years ago I looked forward to the stability and predictability of a business in an industry that did not go from boom to bust on a regular basis. I was happy to leave the never ending growth and contraction that characterize the computer industry or oil industry, or which regularly disrupt Canadian Pork producers and US dairy farmers.

Well, it seems another of my plans has gone awry. This last year, 2009, was full of internal changes here at Westgen, the likes of which had not been seen in recent memory. And 2010 promises a great deal of technological change to the Artificial Insemination industry – more than perhaps ever before. The reason for this quantum change – Genomics.

In my mind, the discussion on 'does genomics really work?' is over. Now the discussion is how does Westgen and Semex take best advantage of this new tool. It is my opinion that Genomics is the biggest single force for change in AI since the introduction of our Canadian Bull Proving Program.

The effect of Genomics can be seen in the planning of every major aspect of Westgen's operations. Genomics means less bulls housed, likely for a shorter period of,

time with individuals being used as sire of sons well before all the proof data has been collected, dramatically shortening the generation interval. Westgen's need for more and more usage of young sires usage has changed 180 degrees overnight to a position of needing less usage, but needing more complete information on daughters sooner. Our relationship with you, our producers and members, will also change as we move our focus away from maximum participation in our Genetic Leader programs to providing the best proven, sexed, genomic, and young sire in a package most attractive to each of you at the best price possible.

The future for both you - the Western Canadian Milk Producer, with a much more extensive line up of semen to choose from - and for Westgen, your producer owned supplier, is bright. Stay tuned to the Bullseye for future developments in the unfolding genomics lead, breed improvement revolution. Mark my words – 2010 will be a watershed year in the AI Industry and I for one am glad I'm here to experience it.

Brad Howard
Westgen General Manager

Attend the Westgen AGM - Mar. 30, 2010

Geographical reality makes it difficult to achieve the kind of attendance we'd like to see at Westgen's Annual General Meeting (AGM). Still, it is your organization and we encourage all members to take an active interest in the affairs of their organization.

If you are interested in attending the Westgen AGM and live outside of BC's Fraser Valley, there is the potential to access financial support to help reduce the cost of travel. Once here, producers attending the annual

meeting can also take part in a tour of several local dairy farms as well as dinner with the Westgen board of directors. We hope there will be sufficient interest to warrant a draw in each of the areas.

Financial support for this program will be provided as a credit to the member's account.

Those wishing to apply should contact Lynne Bishop at Westgen before February 26th, 2010 at 1-800-563-5603.

Manitoba	\$450 credit each, for two members
Saskatchewan:	\$450 credit each, for two members
Alberta:	\$450 credit each, for four members
British Columbia:	\$200 credit each, for four members from outside of the Fraser Valley

Not a Westgen member? No worries... with a \$5.00 investment you too can become a Westgen member!



The First
North American
Conference on
**PRECISION DAIRY
MANAGEMENT**

March 2-5, 2010
Toronto, Ontario
Canada

The Second
North American Conference on
Robotic Milking

PRECISION DAIRY MANAGEMENT

On March 2 to 5, 2010 there is an International Conference about Dairy Farm Automation and Sensor Based Data to improve productivity, health and welfare of dairy cows. The conference also focuses on increasing labour efficiency on the dairy farm, by applying automated individual cow care.

To register please visit the conference website or call the conference

phone number.

Note: If you are interested or planning to attend the Precision Dairy conference please contact Paul Meyer at pmeyer@westgen.com, or phone at 604-530-1141 or 1-800-563-5603 at the Westgen office. If there is enough interest from our Westgen customers, we will organize pre-conference farm and daughter tours for Mar. 1st, 2010.

www.precisiondairy2010.com

Phone: 1-519-826-4047

Dudoc *Mr. Burns:* On the Cusp

A popular main stay of the Westgen proof sheet since February 2007, Dudoc Mr Burns is on the cusp of his 2nd crop proof. A former #1 LPI bull (August 2007) and always near the top of the LPI charts (+2200 GLPI 09*AUG) Mr Burns will be one to watch in April 2010 when a significant number of daughters are added to his proof. His second crop daughters are just starting to calve and to get scored and the early results are promising. So far on 2nd crop daughters Mr Burns is 77% GP and better with already 2 VG-2YR old daughters to his credit.

What adds popularity to this sire is his red carrier status, but it's not just because of this red gene that he is popular. Mr Burns sires dairy cattle that are tall and long, with great angle to their rib structure (AG+11). They are hard topped cows with strong loin structure (LS+4) and correct pin placement (PS+5) and width (PW+7). He sires shallow udders with high and wide rear udder attachments, and slightly wide rear teats (RTP 2W). One of his strongest features is his foot structure (FT+12, HD+8) combined with correct set to the leg (SRL+8) and desirable tracking (RLRV+6) allowing for cows that can easily move in your barn.

Mr Burns doesn't just build them right, he also leaves cows that know how to milk (+1553kg milk) and in particular Mr Burns leaves very high protein testing daughters. Protein test is attributed more to genetics than management and Mr Burns is a strong protein test transmitter at +0.14% and +67kg protein. They are cows that are easy to work with and have fast milk outs.

With second crop data just around the corner for Mr Burns the anticipation is grow-

ing and early reports are very favourable. Mr Burns should mate well on typical daughters of FBI, Final Cut, Goldwyn, Jasper, Lucky Star, More, Outside, and Samuelo as well as those of Bolton, Fortune, and Shottle.



Abbyview Mr Burns 560 EX-91-CAN
4-02 3X 305 13422 466 3.5 389 2.9
BCA 263 244 240



Ubyyssey Eliza Mr Burns 4063
VG-86-5YR-CAN
3-04 2X 294 15139 711 4.7 477 3.2
BCA 315 397 310
1 Super 3 Award

Regancrest Dolman REVISITED

Since his debut back in May of 2006 Regancrest Dolman has been a very heavily used sire in herds across Canada and he spent many months on top of Westgen's top selling bull list. With daughters now entering the milking string across western Canada it is apparent that Dolman is siring cows that make satisfied breeders.

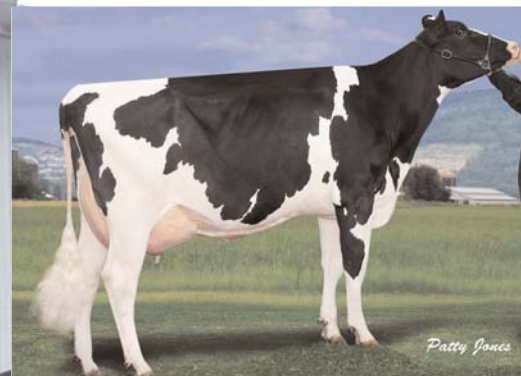
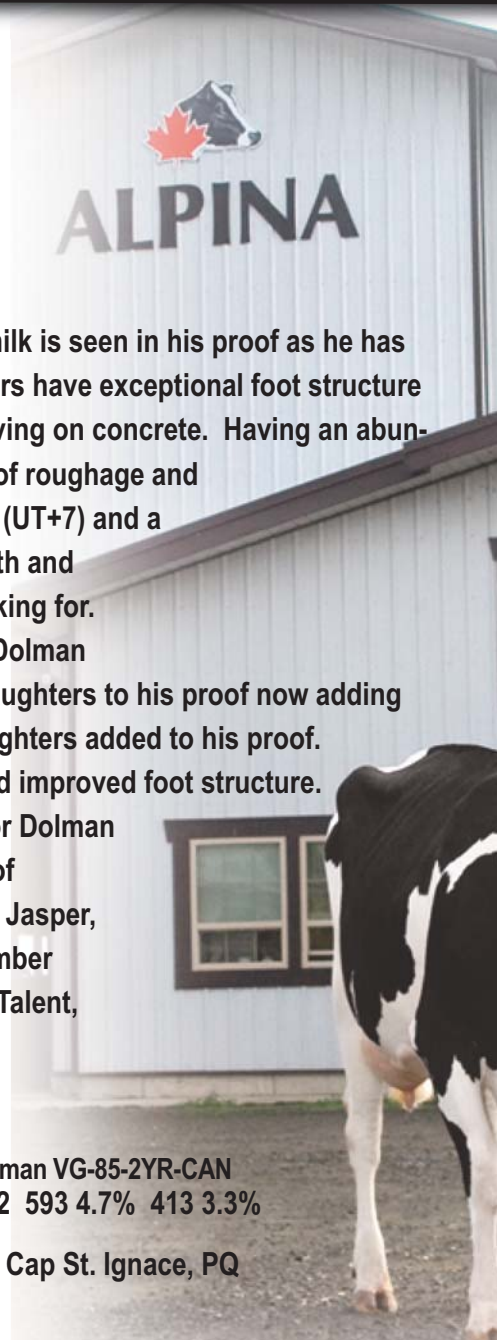
The best way to describe a typical daughter of Dolman is hard working, rugged, and capacious. Breeders with milking Dolman daughters often praise them for their high levels of milk production. Evidence of this will to milk is seen in his proof as he has improved by 156kg Milk from his original proof in May 2006. Dolman daughters have exceptional foot structure (+10 FT, +11HD) ensuring that they will be able to withstand the pressure of living on concrete. Having an abundance of capacity enables the Dolman daughters to consume large amounts of roughage and convert it to milk. Daughters of Dolman have quality udders with soft texture (UT+7) and a deep median suspensory ligament (MSL+11). Dolman sires cows with strength and high production, which is exactly what progressive thinking breeders are looking for.

With an outcross pedigree, strong functional type, and high levels of milk Dolman became a popular, widely used sire. In August Dolman added hundreds of daughters to his proof now adding high reliability to his credentials and in January we will see thousands of daughters added to his proof.

Ideally, Dolman should be used on cows that need added strength, milk and improved foot structure.

Logical matings for Dolman are on daughters of Goldwyn, Inquirer, Jasper, Lucky Star, September Storm, Stormatic, Talent, and Titanic.

Jolicap Carolane Dolman VG-85-2YR-CAN
2-00 2X P190 12512 593 4.7% 413 3.3%
BCA 326 418 339
Ferme Jolicap Inc, Cap St. Ignace, PQ



Alpina Dolman Swannie
VG-87-2YR-CAN
1-11 2x P169 10425 377 3.6% 344 3.3%
BCA 279 271 289
Alpina Dairy Farm Ltd., Abbotsford, BC

A
Will
to
Milk



Our sincere congratulations to all breeders and owners of these fine Semex sired cows.

High Classification

**Stoneden Goldwyn Candace
VG-89-3YR**

Chilliwack Cattle Co., BC
R & F Livestock Inc., SK

**Alley Goldwyn Taber
VG-86-2YR**

Albert Leyenhorst, SK

**Herbada September Snowflake
VG-86-2YR**

Herbada Farms, BC

**Katerdale Lheros Lady
VG-86-2YR**

John Sunder, BC

**Nature Glen Astronomic Liberty
VG-86-2YR**

Nature Glen Dairy, BC

**Rollin Goldwyn Drusilla
VG-86-2YR**

Viewfield Farms Ltd., BC

**Saanwood Goldwyn Goldie
VG-86-2YR**

Viewfield Farms Ltd., BC

**Summershade Nedraa S Storm
VG-86-2YR**

Summershade Farms Ltd., BC

Blayjoy Jasper Mallory VG-89

Chilliwack Cattle Co., BC
R & F Livestock Inc., SK

Benbie Lyster Stacy EX-91

Benbie Holsteins Ltd., SK

RF Lheros Velvet EX-91

Joe Guenther, SK

**Caliente Inquirer Rebecca
EX-90**

Elaine K. Donald, SK

Kenmarank Talent Dorrie EX-90

Kenmarank Farms Ltd., BC

Matvale Outside Black III EX-90

Arthur Pruiim, SK

RF Outside Kansas EX-90

Wheatland Holsteins, SK

**Summershade Mollay Talent
EX-90**

Summershade Farms Ltd., BC

**Summershade Thunder
Marigold EX-90**

Summershade Farms Ltd., BC

Telford Astor Stormatic EX-90

Telford Farms, BC

**High Production
Super 3 Awards**

Dardel Gibson Orie

BCAs: 272 402 294
Dardel Holsteins, AB

Kawartha Cousteau Christy

BCAs: 350 357 351
Kawartha Holsteins, SK

Kevbar Storm Eva

BCAs: 250 339 275
Hillcrest Colony, SK

Morsan Morty Frisky

BCAs: 319 387 302
Scova Farms Ltd., AB

Rolyvale Inquirer Jean

BCAs: 298 303 293
Lavender Farms Ltd., BC

Longtime Production

Athya Lindy Urethra

129,534kg 3.6%F 3.4%P
Plemark Holsteins, MB

Clearsky Lee Carly

127,087kg 4.0%F 3.2%P
Houweling Farms Ltd., AB

Wiamy Ella Rudolph

124,169kg 3.5%F 3.0%P
Wim Kraan, BC

Hyljon Aeroline Queeny

112,042kg 3.4%F 3.3%P
John E. Hylkema, BC

Telford Restore

109,677kg 3.5%F 3.2%P
Telford Farms, BC

Delaine Rudolph Mindy

106,319kg 4.0%F 3.3%P
Elaine K. Donald, SK

**St Christopher Veronica
Mabel**

104,394kg 3.4%F 3.3%P
St. Christopher Holsteins, BC

Meadowbrink Park Molly E

103,393kg 3.5%F 3.2%P
Meadowbrink Farms, BC

Vandel Lee Indigo

103,858kg 3.4%F 3.2%P
L & B Van Den Bossche, MB

Oakparke Rudolph Jana

101,146kg 4.4%F 3.6%P
Oakparke Holsteins, MB



Our sincere congratulations to all breeders and owners of these fine Semex sired cows.

GENETIC LEADER SUCCESS

Recognizing exceptional first crop daughters of Westgen sampled bulls



Star Brood Cows

Benner Progress Jacinda 12*
Benner Holsteins Ltd., MB

Glenridge JY B Mydream 8*
Glenridge Holsteins, SK

**Summershade Icecapade
Aeroline 8***
Cedarwal Farms Ltd., BC

Benner James Jone 7*
Benner Holsteins Ltd., MB

Benner Outside Joyce 6*
Benner Holsteins Ltd., MB

Rayverley Leader Ezra 6*
Robert Crowe, MB
Ronald Boerchers, MB
Wilsongrove Holsteins, MB

Wedgwood Gretta Skychief 6*
Stanhope-Wedgwood, BC
Everett Simanton, AB

Willswikk Charles Dream 6*
J.W. Wikkerink Farms Ltd., BC

Lor-Lee Spice Prelude 5*
Neuday Farms Ltd., SK

Provincial Storm Silver 5*
Prairie Diamond Farm, SK

Wilcoxview BC Cami 5*
Cedarwal Farms Ltd., BC
Peter Tuytel, BC

Benner Lee Shamrock 4*
Benner Holsteins Ltd., MB

Lavender Skychief Rosalind 4*
Lavender Farms Ltd., BC

Sunnylodge Snowball 4*
Ivan & Diane Naylor, MB

GENETIC LEADER SUCCESS

Recognizing exceptional first crop daughters of Westgen sampled bulls



High Classification

Justacraft 0638 VG-85-2YR
Sire: Langs-Twin-B Good Man
Hodgins-Smith Farms Ltd., BC

**Nicomen Boomer Mary
VG-85-2YR**
Sire: R-E-W Boomer
Nicomen Farm Ltd., BC

**Martiann Stormania Daring 779
VG-88**
Sire: Henkes-Brook Stormania
Martin Hamming, BC

Twilight Plains Joya VG-88
Sire: Morningview Ashlar
Twilight Plains Holsteins, SK

Eastwind Ronnie Med VG-87
Sire: Michette Medieval
Melinke Farms Ltd., BC

Freja Pedro Jade VG-87
Sire: Karona Pedro
Jim & Maryann Hessels, BC

Grafarm Moo Indy VG-86
Sire: Henkes-Brook Stormania
Graham Dairy Farms Ltd., BC

Orkadian Flintstone Nina VG-86
Sire: Summershade Flintstone
Kobes Dairy Farm, BC

Telford Michelle Chiller VG-86
Sire: Cedarwal Chiller
Telford Farms, BC

Twilight Plains Kalina VG-86
Sire: Grasshill Totality
Twilight Plains Holsteins, SK

**Abbyview Macadam Sallie
VG-85**
Sire: Deslacs Macadam
Abbyview Dairies, BC

Alderan Tommy Emmy VG-85
Sire: Ginary Tommy
H.A. Antonsen & Co. Ltd., BC

**Caroncrest Broderick 592
VG-85**
Sire: Sandy Valley Broderick
Caroncrest Farms Ltd., SK

**Dahlcroft Good Man Carina
VG-85**
Sire: Langs-Twin-B Good Man
Ken Dahl, BC



GENETIC LEADER SUCCESS

Recognizing exceptional first crop daughters of Westgen sampled bulls



High Classification (cont'd.)

Haven Crest Romulus 967 VG-85

Sire: Mayblossom Romulus
Evansdale Farms Ltd., BC

Iberg Coloration VG-85

Sire: Bofran Lucky Star
Iberg Farms, BC

Kenmarank Answer Lilac VG-85

Sire: Innislake Answer
Kenmarank Farms Ltd., BC

Neveridle Fronrunner 852 VG-85

Sire: Morsan Fronrunner
Neveridle Dairy Farm Ltd., BC

Stelmo Danton 1048 VG-85

Sire: Innislake Danton
U&D Meier Dairy #2 Ltd., BC

Twilight Plains Sonya VG-85

Sire: Wiamy Koolio
Twilight Plains Holsteins, SK

Twomeier Beethoven 1330 VG-85

Sire: R-E-W Beethoven
U & D Meier Dairy #2 Ltd., BC

Vedderlea Tommy Madiera VG-85

Sire: Ginary Tommy
Vedderlea Farm Ltd., BC

High Production

Super 3 Awards

Ubysey Mertice Medaille

Sire: Delaberge Medaille
BCAs: 278 336 283
UBC Dairy Ed. & Research Centre,

BC

Longtime Production

Frieden Nipper Bidy

96,107kg 3.3%F 3.2%P
Sire: Newlands Nipper
Foth Ventures Ltd., SK

BUK001 7274420

91,444kg 3.4%F 3.2%P
Sire: Newlands Nipper
Vandeburg Farms Ltd., BC

Dykshoorns 914

84,539kg 3.7%F 3.2%P
Sire: Richesse Steven
Dykshoorn Farms Ltd., BC

Klarnie Dollie Destiny

76,620kg 3.1%F 3.3%P
Sire: Donfield Destiny
St. Christopher Holsteins, BC

Boonstra Alex Maxima

74,107kg 3.7%F 3.1%P
Sire: La Presentation Maxima
Boonstra Holsteins, MB

Wouters Lem Broni

73,874kg 3.2%F 3.0%P
Sire: Orthoapple Lem
Wouters Dairy, AB

Martiann Magical Karma 478

71,674kg 3.5%F 3.2%P
Sire: Mainstream Magical
Martin Hamming, BC

Pol Butte Modest Lesley

71,121kg 3.9%F 3.3%P
Sire: Regancrest-LH Modest

Van Den Pol Dairy, AB

Bjorg Selma Sally

68,254kg 3.8%F 3.2%P
Sire: Cherry Crest Computer
J.S. Savage & Son, BC

Marcor Charge Rosarita

67,879kg 3.6%F 3.0%P
Sire: Rietben Charge
Mount Cheam Farms Ltd., BC

VER006 102

67,147kg 3.8%F 2.9%P
Sire: Micheret Picsou
Gerrit Verwoert, BC

Cottonwood Milkstar Isla

66,485kg 4.1%F 3.3%P
Sire: Deslacs Milkstar
Cottonwood Holsteins Ltd., MB

Vanvalley Merrill Hildy

66,205kg 4.0%F 3.2%P
Sire: Cedarwal Merrill
Vanvalley Farm Ltd., BC

Vangard Morriah Corida

65,988kg 3.2%F 3.2%P
Sire: Dohbell Corida
Van Gard Farms Ltd., BC

Valaar Commando Cutie

65,151kg 4.4%F 3.4%P
Sire: Peck Valley Commando
Van Laar Farms Ltd., BC

Lajord Augustine Cy

64,503kg 4.0%F 3.5%P
Sire: Lavender Augustine



Our sincere congratulations to all breeders and owners of these fine Semex sired cows.

GENETIC LEADER SUCCESS

Recognizing exceptional first crop daughters of Westgen sampled bulls



Lifetime Production (cont'd.)

KRA055 Charge Samantha

63,387kg 3.4%F 3.0%P

Sire: Rietben Charge

Hawkeye Ranches 1997 Inc., AB

Marsfield Gerard Yolanda

63,186kg 3.2%F 3.1%P

Sire: Morningview Gerard

Gert & Sonja Schryver, AB

Marsfield Tracer Jane

62,778kg 3.7%F 3.2%P

Sire: Claynook Tracer

Gert & Sonja Schryver, AB

Barkman Joins Westgen Sales Team



Westgen is pleased to announce the hiring of Darrel Barkman to its Manitoba sales team. Barkman lives in La Broquerie and comes with lots of practical dairy farming experience, having been a managing partner in his family's Hylite Holsteins for the past 16 years. In that capacity, Darrel was responsible for breeding decisions, reproductive management, herd health and nutrition for their herd.

Barkman gained valuable experience through involvement in 4-H via the South East Dairy Club and he had an opportunity to represent Manitoba on multiple occasions

at the Western Canadian Classic (WCC). In addition, he represented Canada at the European Dairy Farming Event as a team member in the Dairy Pentathlon in Stoneleigh, England. In addition to his life-long passion for dairy cattle, Darrel also volunteers his time to minor hockey in La Broquerie.

"I'm very excited about taking on this new challenge with Westgen and serving the needs of Manitoba dairy producers", conveys Barkman. No doubt, customers in the South East part of the province will appreciate his earnest, humble manner and his sincere desire to serve Westgen clients well. Married to Chantal, the Barkmans have a 6 year old son named Cameron and are expecting another child early in the New Year.

A.I. Schools

Westgen offers A.I. Management Schools and A.I. Refresher Courses.

If you would like a school in your area, please contact your local rep.

Contact Lynne Bishop
at: 1-800-563-5603 or 604-530-1141
lynne@westgen.com

NEXT CLASSIFICATION

Early Jan.: AB MR

Mid Jan.: MB MR

Late Feb.: SK

Have the classifier request a G-Mate for your herd from Westgen.

This is a **Free** service.

Canada's Formula

I didn't understand completely the makeup of the Canadian Holstein Lifetime Profit Index (LPI) formula. There – I said it... A bit of research into it makes me feel ever so slightly better about that failing: it's a complicated formula!

Simplify

When concepts are complicated, breaking them down into smaller bite sized pieces works for me. Doing that for the LPI formula shows that there are three basic sections to the formula – Production, Durability and Health/Fertility – each with specific summary weights. These sections can then be broken down into individual traits and from there, a bit of multiplication allows one to determine approximate overall Actual Weight for each trait included.

PRODUCTION 51%		DURABILITY 34%		HEALTH/FERTILITY 15%	
Protein Yield	57%	Mammary System	40%	Daughter Fertility	67%
Fat Yield	38%	Feet & Legs	30%	Somatic Cell Score	20%
Protein %	3%	Herd Life	20%	Udder Depth	10%
Fat%	2%	Dairy Strength	10%	Milking Speed	3%

ACTUAL WEIGHTS					
Protein Yield	29.4%	Mammary Syst.	13.4%	Daughter Fertility	9.9%
Fat Yield	19.6%	Feet & Legs	10.1%	Somatic Cell Score	3.0%
Protein %	1.5%	Herd Life	6.7%	Udder Depth	1.5%
Fat%	1.0%	Dairy Strength	3.4%	Milking Speed	0.4%

Paul Meyer, Sales & Marketing Manager

Strive not to be a success, but rather to be of value.

Monthly Shirt Winners

Vandeburgt Farm Ltd., BC
Sunnyside Dairy, SK

Congratulations! All dairy producers who purchase semen are entered into the monthly draw.

The Westgen Bullseye

Westgen - Western Canada's Genetics Centre
Box 40, Milner, BC V0X 1T0
Phone: 1-800-563-5603 Fax: 604-534-3036

