

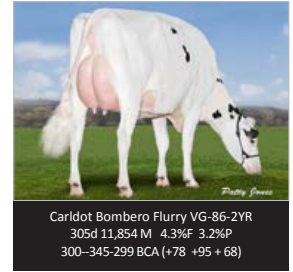


Nine amazing additions to our already stellar Holstein line-up this round including one new hotly anticipated proven addition and it happens to be the maternal brother to **Comestar Lautrust**, 0200HO10000 **Comestar Lineman** - Canada's highest newly-proven Holstein sire! The **Immunity+**® and **Calving Ease** designated **Lineman** (Mogul x Comestar Lautamai Man O Man) debuts with 3177 GLPI! With 260 milking daughters, **Lineman** daughters will be reliably moderate sized, hard working cows (+1006 kg Milk) with outstanding component production (+.32% Fat, +.17% Protein). They will have impressive shallow udders (+15 Mammary System, 11S Udder Depth) with silky Texture (+12), snug Fore Attachments (+14) and high wide Rear Attachments (+16 Height, +7 Width). Feet & Legs will have deep heel depth (+11) and correct rear view (RLRV +9) with a tendency towards straight legs (15S). **Lineman** also ticks all the boxes for Functional Traits being strong for Herd Life (107), SCS (2.52), Daughter Fertility (103) and Calving Ability (103) and like his brother **Lautrust**, **Lineman** will have daughters with healthy lactation patterns (Lactation Persistancy 110). **Lineman** should cross well on typical daughters of Seaver, Impression, Lauthority, Doorman, or typical McCutchen bloodlines.

**Other Proven Highlights:** **Silverridge Album** will continue to be 'Mr **Reliable**' for us as he continues to roll with the addition of more milking daughters. **Album** is still a solid +9 for Conformation and retains his spot as Semex's highest Pro\$ proven Holstein (\$2466). Now with daughters starting their second lactations, **Album**, who carries the **Semexx**, **Health Smart**, **Calving Ease** and **A2A2** designations, continues to be a great source for solid production yields (+1580 Milk). With 111 HL, 2.52 SCS, 105 DF, 109 DCA, 110 CA and 109 Digital Dermatitis (new trait this round), **Album** couldn't be made better for today's modern dairy operations.

The story about **Richmond-FD EL Bombero** is truly quite amazing as he continues to get better and better across the board every round. This Numero Uno son improved for GLPI (3058), Pro\$

(\$2220), Milk (+1641), Fat (+80), Protein (+50), Conformation (+10), Herd Life (109) and NRR (to 62). **Bombero** is becoming a superstar before our very eyes ... .. & **Bombero** is available in our '20 for 20 Special' for the month of December only!!! Be sure to contact your EastGen rep for more details.



**Comestar Lautrust** is as solid as ever holding down the #3 GLPI position with 3226 and +12 for Conformation. Our #2 used sire this past four months, **Lautrust** saw improvement for all three yield traits to +1626 Milk, +87 Fat & + 77 Protein and for both deviations traits to +0.23% Fat, +0.19% Protein! The only sire that has seen higher usage in our EastGen territory is the **Immunity+**®, **Calving Ease**, & **Showtime** designated **Croteau Lesperron Unix**. **Unix**, who has caught on like wildfire with our breeders, continues to carry the banner as Canada's #1 Type sire with +17.

It shouldn't surprise anyone that our **Immunity+**® stars **Amighetti Numero Uno**, **Monument Impression** and **Val-Bisson Doorman** just keep getting better. Amazingly, all three saw gains in GLPI, Pro\$ and Milk yields while **Numero Uno**, with over 200 more classified daughters, held with +10 Conformation. **Impression** and **Doorman** jumped a point each for Overall Type to +14 and +16 respectively!

Go to [www.eastgen.ca](http://www.eastgen.ca) to get all the details on your favourite EastGen sires.

**PROFIT PLUS**  
Trouble-free, productive, long-living cows with high lifetime profitability.

	Pro\$	GPA LPI	Fat (kg)	Prot (kg)	Conf	DF	HL
Progenesis <b>WIZARD</b>	\$2932	3388	92	85	7	112	109
Woodcrest <b>GRADUAL</b> *	\$2885	3442	89	93	9	107	110
Progenesis <b>CAMERON</b> **	\$2885	3388	97	94	8	107	111
Progenesis <b>OUTLAST</b> ***	\$2868	3385	100	77	9	105	111
Progenesis <b>SUMMERDAY</b> *	\$2849	3399	94	82	12	105	109
Westcoast <b>YAMASKA</b>	\$2800	3435	119	84	9	108	109
Stantons <b>USEFUL</b>	\$2643	3387	127	70	10	108	109

\* - NEW

\*\* - While Supplies Last

\*\*\* - Sexed Only

Check out our expanded **Profit Plus** Line-up!

# Some Exciting **NEW** **Genomax**™ *Leading Genetics* Additions to EastGen's Holstein Line-Up

**Woodcrest GRADUAL** 3442 GPA LPI Jedi x Greenway x McCutchen x Observe x EX Goldwyn  
aAa: 423156 A2A2 VG-89-2YR GMD DOM 2\* Shottle x 7 generations VG or EX dams

- An extremely highly ranked Jedi with 3442 GPA LPI and \$2885 Pro\$
- Outstanding profitability potential from daughters that are made to last (825 NM\$, 110 Herd Life)
- High component yields (182 CFP) from healthy daughters that will breed back well (107 DF)

Areas to protect: Loin, Pin Width



**Progenesis SUMMERDAY** 3399 GPA LPI Duke x Rubicon x Krunch x EX-90 Planet x EX-90 GMD DOM  
aAa: 321465 Shottle x EX GMD DOM Debut x Ladys-Manor Ruby Jen EX-94-2E GMD DOM

- Exciting Duke from one of the top ranking families for hitting the Top Genomic Sires list
- Incredible Mammary Systems (+12 Overall, 2.58 UDC) & problem-free Feet (+9 Heel, 110 Digital Dermatitis)
- Herd-toppers for production (+2512 Milk, 176 CFP) that will stand the test of time (109 HL)

Areas to protect: Height of Front End, Loin



**Claynook RUMMY** 3346 GPA LPI Abbott x VG-2YR Wickham x VG-2YR McCutchen x  
aAa: 243165 A2A2 EX-90 3\* Windbrook x Cherry Crest Man-O-Man Roz EX-91 (famous 7th gen. VG or EX)

- Top-notch Immunity+ Abbott son with the potential to make some really outstanding ones
- A type pattern which will trigger some excitement (+16 Conformation, 2.77 PTAT)
- Expect a real boost in components (+.33% Fat, +.17% Protein) & Feet made for all environments (+14 Overall)

Areas to protect: Teat Length, Teat Placement



## Polled™

### Homozygous Polled

All calves will be born polled!  
(\* - Both available Pre-Order Only)



Swissbec  
**JACKPOT** PP \*RED  
0200HO11066  
Casual \*RC x Mardi Gras



GPA LPI 3087  
Pro\$ \$2238  
Milk +1166  
Conf +10



Vogue  
**NEVER AGAIN** PP \*RC  
0200HO11062  
Sifter P x Capital Gain



GPA LPI 3158  
Pro\$ \$2098  
Milk +1160  
Conf +12

The Heterozygous Polled carrier **Stantons ADAGIO-P** is also available day-to-day. One half of his calves, when bred to a non-polled carrier, will be born polled.

### NEW FUNCTIONAL TRAIT - **DIGITAL DERMATITIS (DD)**

A first step towards direct genetic improvement of hoof health in Canadian Holsteins has been taken with the introduction of DD.

Read all about it in your Dec '17 EastGen UPDATE.

Amplify the best genetics in your herd with EastGen's expanded line-up of sexed semen.

## Sexxed™



View-Home **CARDINALS 0777HO10668**  
Yoder x McCutchen x 9 generations VG or EX

Immunity+® Yoder offers 106 kg of Fat with solid Conformation (+10) and an off-the-charts Health & Fertility profile.



Westcoast **GALAHAD 0777HO10755**  
Penmanship x Jacey x 8 generations VG or EX

Offers excellent components (+.28% Fat, +.30% Protein), +11 Conformation & top-notch H&F improvement (+603 Overall)



Progenesis **TAKEOFF 0777HO10701**  
Elude x 5G x Epic x 10 generations VG or EX

Impressive Elude son with a solid GPA LPI of 3181 & an impressive type profile with +16 for both Conformation and F&L's.

### Silvridge **ALBUM 0777HO02942 NEW**

Epic x Man-O-Man x Goldwyn from the famous "MD-Delight Durham Atlee"

EastGen has responded to trends and needs in the marketplace by expanding our line-up of **SexedULTRA** sires. Our newest 4 additions includes our #1 proven Pro\$ sire **ALBUM!**

All sorted bulls from Semex are processed with **SexedULTRA**, the most advanced technology in the industry.

Using **SexedULTRA** will get you the results you are looking for!

Check our website weekly for our full list of exciting sires available with **SexedUltra!**