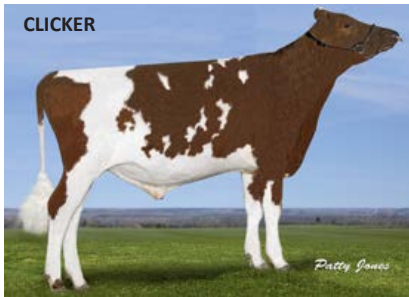


AYRSHIRE



CLICKER joins our list with an extreme 3065 GPA LPI, +1217 Milk, +62 Fat (+.16%), +48 Protein (+.10%) and +8 Conformation. By Revolution, **CLICKER's** dam is a VG-87 Oblique with a 4 lactation average of 291-272-306. Her dam is an EX-90, ultra-high producing Peterslund with a lifetime average of 302-292-330 BCA. Behind her is an EX-4E 90 BB Kellogg followed by three more generations of VG high lifetime production dams. **CLICKER** will make a strong addition to our sheet for breeders looking for a reliable source of high production, components and a balanced type profile (+8 for Conformation). **CLICKER** is destined to carry on his renowned family's tradition for high lifetime production and longevity (HL 106). **CLICKER** also carries the coveted **HealthSmart**, **A2A2** and **Robot Ready** designations.

JERSEY



An early and very nice holiday gift for our Jersey breeders with a **NEW #1 GLPI and #1 Pro\$** Jersey sire - **0200JE07756 Golden GDK VIVALDI**! Born in Denmark and sired by the Danish bull Lix, **VIVALDI** will represent a total outcross with unreal components (+95 kg Fat, +1.07% and +52 kg Protein, +.53%). **VIVALDI** also offers rock-solid Conformation with +7, plus ratings for every major breakdown and amazingly for every single Health & Fertility trait. **VIVALDI's** dam **Impuls Violet** was born in Denmark as the result of an imported embryo. He carries the designations of **HealthSmart**, **A2A2**, and with a NRR of

67, the coveted **ReproMax** designation. Unfortunately, **VIVALDI** is dead but we do have a supply of semen on him that is available on a **Pre-Order Only** basis. *You won't want to miss out on VIVALDI. He has all the bases covered!*



DURHAM is \$2003 Pro\$, 1802 GPA LPI while offering solid Milk (+853), pleasing components (+.08% Fat, +.16% Protein) and double digit type (+10 Conformation). With 11S for Udder Depth, **DURHAM** is one of the best in the business. He'll offer great feet (+6 Foot Angle) and correct leg set from the rear (+9 RLRV) and sound rumps (+5 Overall). This all together would tell us they are made to last and with 108 Herd Life, that's exactly what they are. *He's our best for HL!*

Springlea DURHAM, who will be made available on a **Pre-Order Only** basis, is our second of two Jersey additions. **DURHAM** is a Honek son from **Springlea Premier Dazzle VG-87** and then a VG-87 Lilibet's Legacy that stems from the famous **Rexlea Performing**

MILKING SHORTHORN



Ironman Iceland is the '16 & '17 Milking Shorthorn National Gr Ch. so **IRONMAN-P** is already a well-known commodity.

Oceanbrae IRONMAN-P should make a welcome addition to our Milking Shorthorn list as the #4 LPI sire in the country. **IRONMAN-P**, in addition to being heterozygous polled, is strong for component rich milk (+.39% Fat, +.22% Protein) and offers a balanced type profile (+8). His daughter **Richford**

EastGen 30 for \$30 Special Ask your EastGen rep about our **JE & AY 30 for \$30 Special**.

Amplify the best genetics in your herd with EastGen's expanded line-up of sexed semen.



Guimo **JOEL**
Legal x Paramount



FDL **BARCELONA**
Barnabas x Premier



River Valley Charley
CHANGE UP
Lemonhead x Pharoah



River Valley Venus
VIP
Colton x Minister

All sorted bulls from Semex are processed with **SexedULTRA**, the most advanced technology in the industry.

Check our website weekly for our full list of exciting sires available with **SexedUltra!**