

## Semen tank management: A dozen do's and a few don'ts

**Bruce Poulin, EastGen AI Trainer**


That semen tank sitting in the corner of the barn office or vet room generally goes unnoticed except for the times you are pulling out a dose of semen from one of your favourite sires.

But with some extra attention, you can obtain the best longevity from your semen storage vessel while ensuring the dose you are about to put in the cow or heifer is as fertile as the day it was processed.

### The DO'S and the.... DON'TS

- Do**
- Do keep the tank in a well-lit, well-ventilated area.
  - Do place a wooden pallet or rigid foam underneath the tank.
  - Do use mild soap and water to clean the tank as needed.
  - Do check the nitrogen level regularly.
  - Do replace the neck cork after use.
  - Do keep a pair of safety glasses near the tank and use them.
  - Do lock the tank when not in use.
  - Do securely tie down a tank in the bed of a truck for transport.
  - Do keep the top of the can below the neck tube when retrieving a straw of semen.
  - Do use a clip to secure the canister below the critical zone.
  - Do use a pre-cooled tweezers to handle semen.
  - Do limit exposure of the straw to air between the tank and thaw unit.

*Continued on page 2...*



### Improve your knowledge and learn:

- New skills
- Estrus cycle
- Tank management
- Semen handling
- Proper AI techniques
- Heat detection
- Reproductive disorders

Enjoy the flexibility of our in-class/in-cow course or an in-class only session.

#### Upcoming dates: Aylmer, Ontario

February 14 & 15, 2019

April 11 & 12, 2019

May 16 & 17, 2019

#### Kemptville, Ontario

February 20 & 21, 2019

**For additional information  
contact: [aitraining@eastgen.ca](mailto:aitraining@eastgen.ca)**

PUT MORE TIME ON YOUR SIDE



# ai24™

*Power-up your cow monitoring capabilities with the most advanced, yet easy-to-use, herd management system.*

✓ *Solutions for both rumination and activity monitoring*

✓ *Actionable insights and reports on health, reproduction, nutrition and wellbeing of your cows and heifers.*

✓ *It's easy to use with proven results and proven profitability for any type of dairy housing situation.*



*Continued from Page 1...*

**Semen tank management:**

**A dozen do's and a few don'ts**

**Don't**

- Don't store the tank directly on concrete.
- Don't store tanks in the milkhouse.
- Don't use a piece of pipe to measure nitrogen levels.
- Don't transport the tank in the passenger seat of a vehicle.
- Don't use a strong jet of water to clean the tank's exterior.

Once we are confident in our abilities to follow best practices in tank care and semen handling at the tank, then we must follow best practice guidelines for the remainder of the AI procedure (straw and gun preparation, semen placement in the cow, etc.). With all these factors considered, and paying attention to all the small details, we can expect better-than-average conception rates.

Remember, an open cow makes no milk or money.

## **Notice of Annual General Meeting of Members of EastGen Incorporated**

Notice is hereby given that the Annual Meeting of the Members of EastGen will be held at the Sunbridge Hotel & Conference Centre (formerly the Cambridge Holiday Inn), Cambridge, ON, with a Link Meeting for Eastern Ontario members at the Grenville Mutual Insurance office building, Kemptville, ON, on the 28th day of March, 2019 at the hour of 10:00 in the forenoon to:

- a) Receive the financial statements of EastGen for the period ending December 31, 2018;
- b) Appoint auditors and authorize the directors to fix the remuneration of the auditors;
- c) Transact such further and other business as may properly be brought before the meeting or any adjournment thereof.

By order of the Board of Directors,

Brian O'Connor, Secretary

**Thursday, March 28, 2019**

10:00 a.m. – 11:45 a.m.

Registration: 9:30 a.m.

Meeting 10:00 a.m. SHARP

## Is Elevate Right for You?

**Mark Carson**  
MSc. BSc. (Agr).  
**EastGen Solutions**  
**Manager**

EastGen introduced Elevate, a new service that helps customers sort inventory through genomic testing and managing genetic data. Is this service right for your herd? If you are wondering if Elevate is a fit for your herd, below are some questions to ask yourself...

**1) Do you have too many heifers?** With the changes in milk market conditions, as well as sexed semen being more widely accepted, having too many replacements is now a common problem that dairy producers face. With the cost of raising heifers estimated at \$2500 per animal, the ability to identify genetic potential and remove heifers at a young age can be highly profitable. Through Elevate genomic testing, we can sort through heifer inventories and come up with a custom strategy for your herd. Resulting strategies include culling bottom end heifers based on your genetic needs, and selecting which animals can be bred to sexed, conventional or beef semen. Also, you can use results to pursue traits like A2A2, if that is a part of your overall genetic goals.

**2) Where are your future replacements coming from?** Getting the most correct mating on heifers has never been more important. The majority of sexed semen is going into heifers. For herds that use sexed semen heavily, over

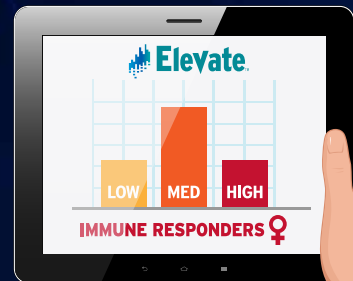
half their future replacements will result from heifer matings. Since we do not have lactation data yet, we must rely solely on genetic information to make the mating decision. Using genomic testing increases the reliability of the genetic information to 70%. Genomic testing also helps to correct parentage mistakes. Doing this will ensure better quality matings and improve future generations.

### 3) **Do you want to make an overall genetic plan for your herd?**

As you can tell from the above paragraphs, breeding strategy has become a whole lot more complicated. It is not just about matching the right sire to the right cow. We're now making decisions about which cows we want a female pregnancy from, as well as who gets bred to conventional and beef semen. Regardless, if you decide to genomic test or not, if you're using high amounts of beef and sexed semen, we recommend you consult with your EastGen representative to set up a herd strategy which can be incorporated into our OptiMate mating program. OptiMate can be customized to sort beef, sexed and conventional matings, and have the results delivered right on your mating report.

*If you said yes to any of the questions above, and want more information on Elevate, please contact your EastGen Representative, or email [elevate@eastgen.ca](mailto:elevate@eastgen.ca)*

## ARE YOU TESTING OR GUESSING?



## Immunity♀

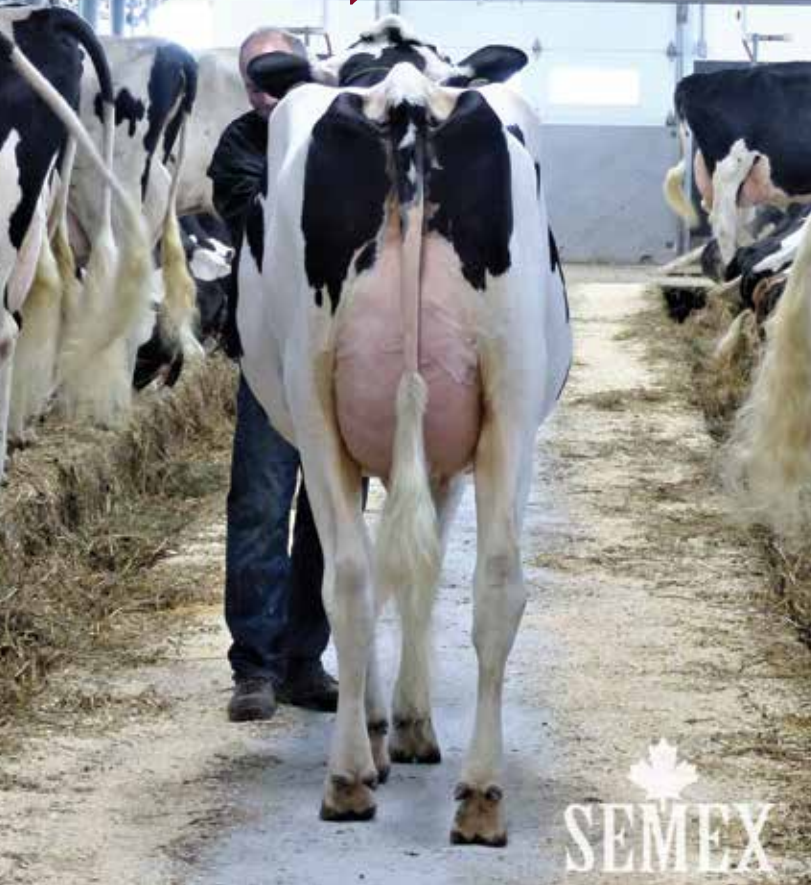
Elevate™ gives you fast, easy access to vital female genomic information that increases genetic gain, corrects parentage errors, manages inbreeding and helps you make confident mating decisions for valuable genetic progress.

Available exclusively to Elevate clients, Immunity female genomic testing will be the most valuable investment you can make on your operation. Globally sought after as the health marker of choice, Immunity female testing is the only way to improve your herd's health genetically.

*Contact your EastGen representative today for exclusive Immunity female genomics, making the decision to Elevate your herd an easy one!*

# EastGen

Invested in your future.



Claynook

# DENIM

0200HO10348

FLAME x SNOWMAN x PLANET

**NOW WITH OFFICIAL  
TYPE PROOF!**



MILIBRO DENIM ROSELIL VG-86-2YR-CAN



Excitement is building for Claynook **DENIM**! This well-bred Flame son offers everything modern dairymen are looking for. With an official Canadian proof for Conformation, expect deep-healed cows with ideal bone quality and outstanding udders. He also has official designations as a Fertility First, Calving Ease, Health Smart, Showtime and A2A2 sire.

Ask your EastGen representative about **DENIM** ... he checks all the boxes!

GPA LPI	+3189
Pro\$	\$2038
Milk	+1009kg
Fat	+65kg +0.25%
Protein	+50kg +0.14%
Conformation	+12*
Mammary System	+11*
Feet & Legs	+13*
Heel Depth	+11*
Bone Quality	+10*
Herd Life	105*
Daughter Fertility	103
Calving Ability	104*

(\* - Official GEBV)

GPA 18\*DEC