

Our industry continues to evolve over time and our sire offerings have continued to follow that same trend. We have regularly worked to differentiate our product line-up by adding more categories of sires to meet the expanding goals and needs of our producers. With this most recent proof round, we see this proud tradition of raising the bar with new elite offerings continue as we introduce new sires to every single one of our proof sheet sire categories this proof round!

Our two new additions to our proven sire line-up this round now top our current proven sire listing. Locally-bred **Boldi V Gymnast** is our first. **Gymnast** is our first proven **Doorsopen** son (by **Doorman**) out of four direct generations of VG-2YR dams which includes the well-known **Velthuis SG MOM Alesia VG-87-2YR 18*** and **Allyndale-I Goldwyn Albany VG-87 14***. **Gymnast's** 5th dam is the famous **MD-Delight Durham Atlee EX-92 GMD DOM 14*** (All-American Jr. 3-Yr-Old & Res. Gr. Ch. '05 WDE). **Gymnast** debuts with +3386 GLPI, \$2672 Pro\$, +1615 Milk, +71 Fat (+0.07%), +70 Protein (+0.12%) and +8 for Conformation.

Breeders can expect shallow udders (5S) with strong udder support (+8) and ideal Feet & Legs (+7 Heel, +5 RLRV, 1C RLSV). **Gymnast** will tend to lower the pin set (1L) which many breeders are looking for today and carry good width through their rumps (+11 Pin Width). With this balanced type profile, we get the added bonus that **Gymnast** is our very best active proven sire for overall Health & Fertility with a rating of +599. Of note within this rating is his 105 HL, 107 for Mastitis Resistance, Metabolic Disease, and Hoof Health, 106 for Daughter Fertility and 103 for Daughter Calving Ability. If that wasn't enough, **Gymnast** is also A2A2 designated, he can be used on heifers (101 Calving Ability) and he is an outstanding settler (61 Semen Fertility).



Our second addition, the highest on our proven list, is **Silverridge V Etesian**. **Etesian** debuts with a GMACE LPI of +3410, \$2870 Pro\$, +2430 kg Milk, +73 Fat (-0.19%), +60 Protein (-0.16%) and +11 Conformation. **Etesian**, by Supershot, is from a VG 1* McCutchen daughter of **Velthuis S G Snow Evening VG-87-2YR 7*** (dam of the popular **Silverridge V Wickham**). Her dam was one of Planet's best daughters **Calbrett Planet Eve VG-87 16*** who traces back to the world-renowned matriarch of the family **Whittier Farms Lead Mae EX-95-3E DOM GMD**.

There is no proven sire or GMACE proven sire in the World with the level of Milk of **Etesian** that is better for Conformation (+11). **He is in a league of his own!** Combined with that, he is 103 or higher for Herd Life, Mastitis Resistance, Hoof Health, Daughter Fertility, Milking Temperament, Calving Ability, and Daughter Calving Ability. Last but not least, **Etesian** is also designated as **Calving Ease™**, **Robot Ready™**, and **Fertility First™**!

Other Proven Highlights: Unfortunately, but not unexpectedly, we have removed **Westcoast Randall** and **Stantons Alligator** from our Day-To-Day line-up due to supply issues. Both sires saw gains in their GLPI ratings despite the annual National Base Change. There will be a limit on purchases of both sires of 5 doses. We have also introduced **Stantons Actually** on a purchase only basis while supplies last. **Actually**, who is a Maternal Brother to **Alligator** by Silver, is unfortunately dead and has a very limited amount of semen available. He debuts with +3439 GLPI, +584 Milk, +89 Fat (+0.59%), 31 Protein (+0.10%) and +13 Conformation. On a more positive note, **Silverstream Porter** held for GLPI and saw gains for Pro\$ of \$273 to \$2459. He also gained two points for Semen Fertility to 61. Since his addition in December, **Stantons Adagio-P** has been our #1 used sire every month. Like **Porter**, **Adagio-P** gained in Pro\$ with the more than doubling of his daughters and went from a -0.01% Fat to +0.10%!

Some Exciting **NEW** **Genomax**™ *Leading Genetics* Additions to EastGen's Holstein Line-Up

Claynook FINDLAY 3305 GPA LPI Fabulous x VG-86-2YR Duke x VG-88 x VG-88 10* x 9 more
aAa: 324165 **A2A2** generations of VG or EX dams from the "Wesswood HC Rudy Missy" family

- A deeply-bred, highly ranked Fabulous with a profile that spells profit (+3305 GPA LPI, \$2584 Pro\$)
- Offers solid type (+13 Conf.), shallow udders (7S) & he's our best for Dairy Capacity (+16, 2.57 Dairy Composite)
- Expect high deviations (+0.10% F, +0.10% P) from daughters that produce easily (+2026 Milk, 106 Lact. Persistency)

Areas to protect: RLSV, Teat Placement



McIntosh Calmac SIDEROAD 3249 GPA LPI Sidekick x VG-86-2YR Euclid x Montross x VG-2YR Numero Uno
aAa: 324165 VG-86 Planet x VG-87-2YR Shottle x 6 more generations of VG or EX dams

- A locally-bred Robot Ready Sidekick son from the same family that gave us Sid, Supersire, Mogul and many more!
- Eye-catching type (+14 Conf.) with the Mammary Systems, F&L's, Frames & Rumps that every dairyman is looking for
- Offers extreme Fat Deviations (+0.45%) from healthy, productive daughters that will stand the test of time (105 HL)

Areas to protect: Teat Length, RLSV



Lebold Dreamview MILANO 3202 GPA LPI Sidekick x Alligator x VG-86-2YR Silver x VG-87-2YR 4* x
aAa: 321456 EX-91 3* x VG-88-2YR DOM 2* x VG-88-2YR DOM x EX GMD DOM x VG DOM

- An early Immunity+ designated Sidekick son whose balanced profile will tick all the boxes for a modern dairyman
- Offers high deviation milk (+0.37% Fat, +0.09% Protein) from beautiful, shallow udders (8S UD, +11 MS)
- Expect daughters that calve in easily (103 Dau. Calv. Ability) and are easy to manage (+10 Heel, 105 LP, 104 MR)

Areas to protect: Teat Placement, Teat Length



Oh-River-SYC CRUSHABULL 3080 GPA LPI Crush (Doorman x Uno) x VG-87 Mogul x EX Meridian x
aAa: 324165 EX-91 Atwood x "Regancrest-PR Barbie" EX-92 GMD DOM 6* x 4 gen. of EX dams

- Top-notch Fertility First designated Crush son with the potential to make some really outstanding ones
- A type pattern which will trigger some excitement (+15 Conformation, 3.19 PTAT, +13 Mam. Syst., 2.61 UDC)
- Expect F&L's that will be made for any barn environment (+13 Overall, 1.83 FLC, +8 Heel, +7 RLRV, +14 Bone)

Areas to protect: Rump Angle, Body Condition Score



Amplify the best genetics in your herd with EastGen's expanded



There were two new additions to our sexed semen line-up all processed with SexedULTRA, the most advanced technology in the industry. Our current list of 13 sexed semen sires are all over 2900 LPI and this includes 6 sires available **Day-To-Day!**



NEW Progenesis **MOLIERE**
0777HO11384
 Topnotch x Eugenio x Defender x "Roylane Shot Mindy" family

Moliere is the top-ranked **Immunity+**® sire for Pro\$ (\$3463) in the World and we have him available sexed (pre-purchase only). In addition to being an obvious choice for profitable cows, the **A2A2** designated Moliere offers impressive Health & Fertility ratings, positive component deviations, and solid type (+9 Conformation, +11 Mammary System)!



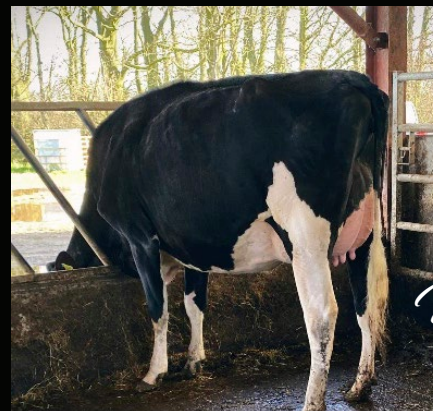
NEW Westcoast **REDCARPET**
0777HO11384
 Imax x Montana x same family as Randall - "Dellia" family

Redcarpet is an exciting new **Robot Ready**™ and **A2A2** designated sire who is over 3000 for both GPA LPI (+3431) and Pro\$ (\$3070). **Redcarpet** will offer pleasing Conformation (+9), extreme F&P deviations, and he is 103 or higher for every Health & Fertility rating. (*Available Pre-Purchase Only)



Check our website weekly for our full list of exciting sires available with **SexedUltra!**

UNIX ... Following in Semex's proud tradition of great herd building bulls!



Absolute Unix Suzette VG-88-2YR-GBR

Croteau Lesperron
UNIX
 0200H 003913
 NUMERO UNO x DOMAIN x GOLDWYN

+2957 GLPI
+12 CONF
+12 Mamm. Syst.

Udderly Fantastic



Trouble-free, productive, long-living cows with high lifetime profitability. Check out our expanded **Profit Plu\$** Line-up!

	Pro\$	GPA LPI	Fat (kg)	Prot (kg)	Conf	Mast. Resist.	HL
Bloomenfeld BLUECHIP NEW	\$3541	3558	120	73	6	109	109
Maheufils Alphagen ART NEW	\$3406	3592	107	89	8	111	106
Progenesis MITSUBISHI	\$3222	3458	113	98	7	102	103
Silverridge V CIRCUS	\$2999	3376	103	73	7	103	105