

### AYRSHIRE

#### HIGHGEAR



Our expansive Ayrshire line-up continues to improve with the addition of **Plein Soleil HIGHGEAR**. **HIGHGEAR** is a son of Yellow from a VG-2YR Chelyotte who stems from **Plein Soleil Animate Hylla EX-92-2E**. **HIGHGEAR** joins our list with +2887 GPA LPI, \$1680 Pro\$, +1378 Milk,

+54 Fat, +50 Protein, and a +10 for Conformation. Breeders can expect profitable daughters with pleasing udders (+9 Overall) that have tremendous Median Suspensory Ligament (+11) and Rear Attachment Width (+14). Our one new proven addition is **De Fraserville CLICKER** who debuts with +2930 GLPI, \$1434 Pro\$,



+853 Milk, +50 Fat (+.19%), +42 Protein (+.15%), and +3 Conformation. **CLICKER** is one of our best for RLRV (+10) and he offers great foot improvement (+6 Heel Depth). He will also be an obvious choice for breeders looking for components and Health & Fertility improvement for their herd (+501 H&F Index, 105 HL, 107 CA, 104 DCA). By Revolution, his VG-87 2\* Oblique dam completes 6 generations from the heart of the cow family that enabled **La Ferme Margot** to earn their second **Master Breeder** award.

### BROWN SWISS

#### HUGE



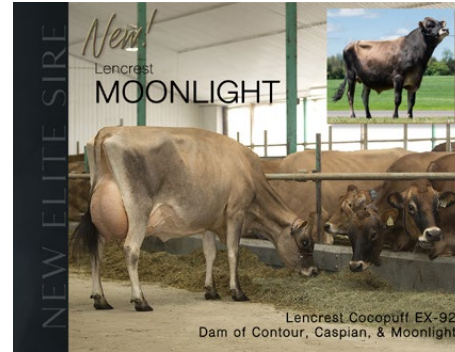
There are two new additions to our Brown Swiss line-up this round. Our first, **Goldhill Bender Huge SG**, is a Bender son who originates from an impressive cow family that leaves nothing to be desired. His dam is a VG Simbabor from an EX-94, EX-95 and EX-90 all with over 50,000 kg

of lifetime milk. The total-package **HUGE** is +2158 GPA LPI, +1071 Milk, +40 Fat, +44 Protein, and a +15 for Conformation which is the very best in the business! The richly-bred **HUGE**, who is available to import, is one that should not be missed! Our second Brown Swiss addition is **Hilltop Acres POWERBALL**. **POWERBALL**, who is a Toby maternal brother to **PACMAN**, debuts with +2016 GPA LPI, +811 Milk, +33 Fat, +38 Protein, and +9 for Type. Both brothers can be used as udder specialists (+11 and +13 Overall respectively) while **POWERBALL** will also excel for SCS (110) and HL (109) improvement.

#### POWERBALL



### JERSEY



This was an absolute huge round for our Jersey breeders with three exciting additions to our already stacked Jersey line-up. The first is **A2A2** carrier **Lencrest MOONLIGHT**. **MOONLIGHT**, a Cohort maternal brother to both **CASPIAN** and **CONTOUR**, stems from the amazing

**Lencrest Cocopuff EX-92** who is the perennial #1 GLPI & #1 Pro\$ cow in Canada. She is backed by three more generations of EX star brood cows from a true icon of the breed **JIF Little Minnie EX-96-4E 12\***. **Minnie** was the Grand Champion twice at the RAWF in '02 and again in '04. **MOONLIGHT** will have solid Milk (+707), extreme Fat (+97 kg, +0.88%) and Protein (+52 kg, +0.37%), and double-digit type (+10). Of the three exceptional brothers, **MOONLIGHT** will be your best choice if you are looking for more open, capacious frames (+13 Overall) and ideal Rumps (+8 Overall). He will also be available sexed.

Our second addition, **St-Lo VIRTUOSO**, is a Video son from **St-Lo Samson Miellie EX-93-2E** who is a full sister to the dam of **St-Lo NUANCE**. The matriarch of the family, who is also the MGD of **St-Lo HONEYDEW**, is **VIRTUOSOS'** second dam **Dorlyn Jete-Stream Miel SUP-EX 94-7E 3\*** (a Gold Award winner, two-time Silver Award winner and two-time Lifetime Production Award Winner). **VIRTUOSO** exemplifies balanced breeding with +796 Milk, +76 Fat (+0.47%), +43 Protein (+0.17%), and an impressive +12 Conformation. He is also **A2A2** and **Robot Ready™** designated. Our final addition, **Guimo JUDO**, is an **A2A2** carrier son of NXLevel from the VG-87 Premier daughter of the amazing **"Joy EX-94-2E 14\*\*"**. **JUDO** officially debuts with a very balanced proof with +1666 GLPI, +639 Milk, +29 Fat, +32 Protein, and +8 for Conformation.



#### Other News:

We have a new Guernsey sire to make available this proof round and he is the #1 Guernsey sire available in Canada, **Coulee Crest TSUNAMI**. **TSUNAMI** is a Toby Keith from an EX Grumpy Pilot who is the new #1 genomic Guernsey cow, **Coulee Crest Pilot Lava EX-90-USA**. **TSUNAMI** joins our list with +1247 GPA LPI, +435 Milk, +25 Fat (+0.08%), +17 Protein (+0.04%), and +7 for Conformation. For our Milking Shorthorn breeders, **Oceanbrae FOSTER** remains our highest ranked sire (+2034 PA LPI) and top Conformation sire (+12), while our top proven sire, **Lynmark ST CLARE**, held for type (+10) and saw gains for all production traits.

