

AYRSHIRE

Due to feedback from staff and breeders, we are pleased to declare that we have removed all AMC sires from our proof sheet this round making our Ayrshire proof sheet line-up, **100% AMC free!** Two new additions to our Ayrshire line-up this proof round starting with **Des Mesanges DALTON**. **DALTON** is sired by the Athonos DIESEL. His dam **Laroc Amazing Linda VG-85-2YR ELITE** is the second highest cow newly indexed this round debuting at #12 Pro\$ and #13 GPA LPI. She is backed by a VG 1* Bigstar followed by a VG-87 1* Oreo. **DALTON** will be an outcross source offering lots of potential for profit debuting as the #4 GPA LPI sire (+3128) and #6 Pro\$ sire (\$1661). **DALTON** offers +1226 Milk, +62 Fat (+.14%), +53 Protein (+.13%) and +7 for Conformation which has a tremendously balanced profile



across the board. Our second addition is **Marlie SELECTION** who is a Halogen son from a 8th generation VG or EX **Visserdale Selena 86 VG-85-2YR ELITE**. A maternal sister to **SOLICITOR**, **Selena 86** stems from **Visserdale Selena 8 VG-87 2*** who has an amazing lifetime BCA average of 435-419-448 with 4.2% Fat and 3.9% Protein. **SELECTION** debuts with +2954 GPA LPI, +1235 Milk, +42 Fat (-.11%), +35 Protein (-.10%) and +8 for Conformation. With all of their proof chart traits pointing in the right direction, both **SELECTION** and **DALTON** should make popular additions for our Ayrshire enthusiasts!

BROWN SWISS

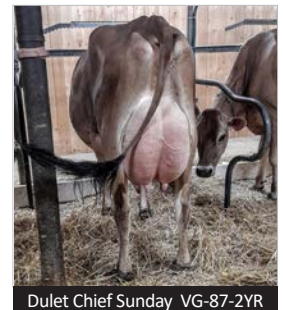


A couple of exciting new genomic gems have joined our Brown Swiss line-up this round and they are maternal brothers out of **HF LC Chasing Dreams VG-87-2YR**. **Chasing Dreams** is a Lucky Carl from an Archer out of **HF Cadence Dream EX-90**. **DERRINGER** is a son of the well-balanced Bender son O Malley, while **DESIGN** is sired by Elmstar, a Lennox and Bigstar cross. Both sires are over +2100 GPA LPI and over +1,000 for Milk, so expect fantastic production potential from this pair. Although both are positive for deviations, expect **DERRINGER** to give slightly higher percentages. Both will be substantial Conformation improvers with **DERRINGER** at +9 and **DESIGN** +12. Breeders can look for **DERRINGER** to offer marginally more strength and frame from his sire O Malley, while **DESIGN** will have a modest advantage for overall rump structure and F&L's coming from his sire Elmstar. Also worth noting, **Hilltop Acres POWERBALL**, **Giacomini ELISIUM**, and the heterozygous polled sire **Trout Hilltop JORDY *P**, will all be made available conventional and sexed (on a Pre-Order basis).

JERSEY

The Jersey news starts with the unprecedented windfall of sexed Jersey sires that breeders will now have access to as a result of the expansion of Semex's sexed semen production capacity. While every sire will still be available as conventional semen, we now have 11 active sires which will be available sexed including the #1 JPI, #1 MACE GLPI, and #1 MACE Pro\$ sire **JX River Valley CHIEF {6}**. Also available sexed will be **Progenesis DEVOUR**

(New), **TOBEFAMOUS**, **LIGHTNING**, **KEYNOTE**, **TEKASHI**, **AIR**, **MOONLIGHT**, **JORDAN**, **JAMIE**, and the **Breeder's Edge** star **CHOCOCHIP!** As incredible and welcoming this great news is, the continued waves being made by **CHIEF {6}** is impossible to ignore. **CHIEF {6}** saw cosmic gains with the addition of another 1,000+ milking daughters propelling him (despite the annual genetic base roll back) to a MACE proof with +2373 GLPI, \$3625 Pro\$, +2768 Milk, +118 Fat, +88 Protein and +8 for Conformation. These are unheard of ratings that are sure to leave a positive influence on the breed for years to come. Joining our elite Jersey line-up is **Progenesis DEVOUR**. By the all-world **CHIEF {6}**, **DEVOUR** is the #1 GPA LPI sire in Canada (+2225) and #3 Pro\$ sire (\$3153) with +2055 Milk, +99 Fat (-.10%), +74 Protein (-.09%) and +6 Conformation. Looking back at our three additions from December, all faired very well. **TOBEFAMOUS** jumped to #2 GPA LPI while gaining on both national rankings and gaining for Milk, Fat, Protein and even Conformation from +11 to +12! The **Immunity+**® sire **LIGHTNING** held well against the roll back and in fact also gained a point on Conformation to +11. This Steve son from four generations of **Silver Award** winning dams and seven generations of VG or EX dams is sure to continue to be popular. **KEYNOTE** (Jaywalk {6} x **Lencrest Sweet Bourbon and Coco VG-87**) remains as one of our go-to production specialists, while our final December addition, **AIR**, saw a slight gain in fact for GPA LPI to +1818 while holding at +12 for Conformation.



Dulet Chief Sunday VG-87-2YR



DEVOUR

GUERNSEY:

Our Guernsey breeders have something to celebrate with the addition of the new #3 GPA LPI sire **Coulee Crest CARVER**. **CARVER's** sire, Vengeance, is a Randall from the respected **Maradore Boomer's Valium EX-94 (Res. All-Amer. Aged Cow 2020)**. His Net Worth dam stems from 4 generations of VG or EX. **CARVER** debuts with +1154 GPA LPI, +99 Milk, +13 Fat (+.11%), +3 Protein (+.00%) and +8 for Conformation.

MILKING SHORTHORN:

The Patriot son **Richford ICON** is our new addition. His dam is the well-known **2x National Show Gr. Ch. Richford Ironman Iceland EX-90**. **ICON** debuts with +1555 PA LPI and +9 Conformation.

Annual Base Change

Canada's genetic base & Pro\$ formula realized in '22 vs '21

	AY	BS	GU	JE	MS
Milk	58	36	72	42	33
CONF	.49	.11	.07	.17	.20
Pro\$	\$144	n/a	n/a	\$353	n/a