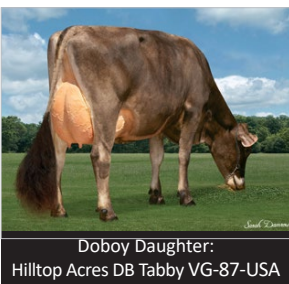


AYRSHIRE



Dodge
Des Mesanges DODGE is our one new exciting genomic addition to our Ayrshire line-up this proof round. **DODGE** is sired by Marilie Melbourne. His dam, **Des Mesanges Bigstar Delphine EX-2E 92 1***, is a tremendous producer with a 4 lactation average of 308-276-331 BCA. She has an Athenos daughter with a two lactation average of 327-316-345 BCA (ranked #14 in Canada), and a Sittler granddaughter ranked #3 overall. **DODGE** debuts with +3077 GPA LPI, \$1622 Pro\$, +1695 Milk (our highest), +60 Fat, +57 Protein, and +6 for Conformation. Aside from being a great source for production yields, **DODGE** can be used as an across-the-board Feet & Legs Improver (+7 Overall) with superior width and overall capacity (+7 Chest Width, +6 Body Depth). We also need to report that we have 7 sires on our proof list that are available **Pre-Order Sexed** (Hunter, Woody, Facybob, Armageddon, Selection, Arbiter, Amarula) and that our Ayrshire proof sheet line-up remains **100% AMC free!**

BROWN SWISS

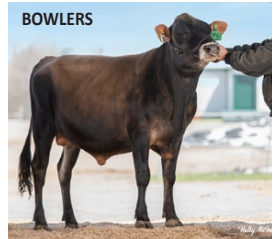


Doboy Daughter:
 Hilltop Acres DB Tabby VG-87-USA
 One new MACE proven gem has joined our Brown Swiss line-up this round, **SWITZER TALS DRDVL DOBOY**. **DOBOY** is sired by the renowned type and udder specialist **HILLTOP ACRES B DAREDEVIL**. His deep, rich and productive maternal line starts with his VG-86 Cadence dam who has a 2-YR-Old record of close to 13,000 kg with 4.5% Fat and 3.4% Protein. His 2nd dam is a VG-86 Alibaba with a best record of close to 14,000 kg with 4.8% Fat and 3.5% Protein. **Switzer Tals Jolt Delani EX-3E 90**, his 3rd dam, has a best record of close to 18,000 kg and a lifetime production of close to 115,000 kg of Milk while his EX Ensign fourth dam has a best record of close to 16,000 kg with 4.2% Fat! **DOBOY** joins us with a very balanced proof with +1984 GLPI, +885 Milk, +32 Fat, +37 Protein, and +11 for Conformation. **DOBOY** will be an obvious choice for breeders looking for added profit and production potential in combination with width (+10 Pin Width), strength (+5 Chest Width), and depth (+5 Body Depth). **DOBOY** is also amongst the best in the business for Mammary System (+11 Overall) with outstanding Fore Attachments (+7), Rear Attachment Height (+8), and amazing Median Suspensory Ligament (+17). Also worth noting, **HF DERRINGER**, **HF DESIGN**, **Giacomini ELISIUM**, and the heterozygous polled sire **Trout Hilltop JORDY *P**, will all be made available conventional and sexed (on a Pre-Order basis).

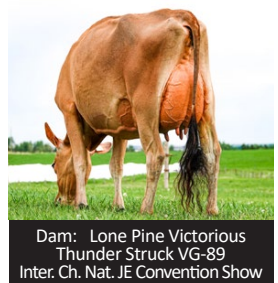
JERSEY

The expansion of Semex's sexed semen production capacity continues to pay dividends to Canadian Jersey breeders with a growing list of amazing Jersey sires to select from. While every sire will still be available as conventional semen, we now have **12 active sires with the addition of two new sexed sires!** The first to join our elite Jersey list is **Dulet BOWLERS**. **BOWLERS** is the first

of two Contour sons we have added this round. He traces from 9 generations of VG or EX dams starting with his VG-88 Silver Award winning Rufus dam who stems from **Dulet Joel Brioche EX-94 2E 3***. **Brioche** won All-Canadian honours in 2017 and was All-Quebec three years in a row. His 3rd dam is an EX-2E with two All-Canadian nominations and 3 Gold Awards. The family continues with a VG-86, EX-2E, EX-93-4E 4* (with 3 All-Canadian nominations & one H.M All-Canadian), EX-93-3E 2* (with 2 All-Canadian nominations), VG-87, and EX 9th dam. **BOWLERS** offers a very balanced proof with solid Milk (+828), high components (+73 Fat, +.42% and +48 Protein, +.24%), and elite type (+11 Conformation). Our second Contour son is the exciting **Lone Pine THOR**. **THOR's** dam, **Lone Pine Victorious Thunder Struck VG-89** is well-known in the show ring as the 1st Sr. 2-YR-Old at the 2021 Westerner Showcase and she followed that up by being pulled for the Intermediate Champion at the 2022 National JE Convention Show. For real Jersey history buffs, **THOR** is backed by 9 of 12 generations of EX dams (11 of 12 VG or EX) tracing back to **Marlu Milady** herself! **THOR** is going to generate a lot of interest in herds regardless of their goals. He offers solid Milk (+556) with high components (+67 Fat, +.55%, +43 Protein, +.31%), and a balanced type profile (+10 Conformation, +7 Mammary System, + 11 Dairy Strength).



BOWLERS



Dam: Lone Pine Victorious
 Thunder Struck VG-89
 Inter. Ch. Nat. JE Convention Show

We have reintroduced the popular sire of sons **St-Lo VIRTUOSO**. Although **VIRTUOSO** is no longer with us, we do have conventional semen available on a pre-purchase only basis. His sire **VIDEO** is the buzz of the industry lately and his maternal line has continued to deliver consistently. His dam, **St-Lo Samson Miellie EX 93-2E**, is a full sister to the dam of **St-Lo NUANCE**. The matriarch of the family, who is also the MGD of **St-Lo HONEYDEW**, is **VIRTUOSOS'** second dam **Dorlyn Jete-Stream Miel SUP-EX 94-7E 3*** (a Gold Award winner, two-time Silver Award winner, and two-time Lifetime Production Award Winner). **VIRTUOSO** has the total package with pedigree, and profile that has no holes. **Lencrest BROADBAND-P** is our last elite addition and he is heterozygous polled. By Demos-P, he is a maternal brother to **CASPIAN**, **CONTOUR**, and **MOONLIGHT** stemming from the world-renowned "**Cocopuff**", the perennial #1 GLPI & #1 Pro\$ cow in Canada. **BROADBAND-P** is a **FastStart** sire meaning you will need to sign an agreement to get access to him. Ask your EastGen representative for more details.

Other Component Breed Details:

GUERNSEY: **Coulee Crest TSUNAMI** remains Canada's #1 GPA LPI sire. Our #1 used sire, conventional and sexed, saw gains for GPA LPI to +1361 and jumped on Conformation to +10.

MILKING SHORTHORN: **Oceanbrae FOSTER**, **Oceanbrae Royal BENTLEY**, & recently added **Richford ICON** held for type & all three sires enjoyed overall gains in their LPI ratings.