

The second proof round of the year has arrived and the overriding message is that our line-up of genetics will offer more value and potential for profit in your herd than ever. We have over 60 sires represented on our current proof sheet offering the very best of genetic opportunities for all of our breeders regardless of their herd goals.

We will start our report highlighting the phenomenal gains of **Progenesis Knowhow**. **Knowhow**, who added more than 200 daughters again this round, has blown away all expectations and entered a league of his own. He gained for all major type traits and jumped to +13 for overall Conformation from +11 in April. He also saw gains for both national indexes (\$3032 Pro\$, +3555 GEBV), all production yield traits, and is by far the highest for Milk (+2196 kg) of any proven sire with at least double-digit type in Canada! **Knowhow**, who is an **A2A2** carrier, is designated **Calving Ease** and **Robot Ready™**, and is also fantastic for Hoof Health (108), Mastitis Resistance (106), and Semen Fertility (62). **Knowhow** will be a tremendous bargain as part of our **30 for \$30 Special!**

Other Proven Highlights: Our #1 GLPI sire, **Westcoast Alcove**, continues to add hundreds of second crop daughters to his proof and there is still no proven sire higher for Milk, Fat, or Protein in Canada with his level of Conformation (+8). The **A2A2** and



Fertility First™ designated **Alcove** will continue to be popular as an outstanding source of elite production, impressive Dairy Strength (+13), and for settling cows (63 Semen Fertility). **Alcove** will be available both as conventional semen and **Day-To-Day Sexed** and as part of our **30 for**

\$30 Special. Our #1 used sire with sexed semen, **Pine-Tree-I Pursuit**, continues to deliver with the addition of more daughters. The **Calving Ease** and **Robot Ready™** designated **Pursuit** gained a point on Conformation (+8), holds down our #2 Pro\$ position, and acquired **Immunity+®** status making him the **#1 proven GLPI Immunity sire in the World!** **Pursuit** will also be part of our **30 for \$30 Special** (plus the \$25 sexing fee). **Stantons Adorable** gained a point on Conformation (+10) this proof round which we hope will be a trend to watch. **Adorable** is on the cusp of adding a large number of second-crop daughters in December. The well-bred Supershot son is from Canada's former #1 GLPI cow **Stantons McCutchen 1174 Agree VG-88 15*** and is a maternal brother to the outstanding **Stantons Alligator**. **Adorable** also has the added benefit of being above average for Herd Life, Mastitis Resistance, Hoof Health, Calving Ease and is available as part of our **30 for \$20 Special.**

Melarry Fuel, who added more than three hundred daughters to his proof this round, saw gains for GLPI (+3358), Pro\$ (\$2172), Milk (+1931 kg), Fat (+115 kg) and Protein (+67 kg) while holding for Conformation with +10. Breeders have made **Fuel** our most popular sire in the last 12 months as a reliable



source for outstanding strong frames (+16 Dairy Strength, +11 Chest Width, +12 Body Depth), and ideal rump structures for many of today's common blood lines (Rump Angle 6L). **Fuel** will be a welcome bargain as part of our **30 for \$30 Special!** **Westcoast Randall** will be available as part of our **30 for \$25 Special** as will the **King of the Ring**, perennial favourite **Unix**. The **Unix** son and udder specialist, **Claynook Dealmaker**, gained for GLPI, Pro\$, Milk, Fat, and Protein while holding at +11 for Conformation and offers real value in our **30 for \$20 Special.** **Of note, amazingly every sire made available on our current proven sire list is available in one of our bucket specials this round!** Take advantage of our high reliability, elite proven herd-builder bulls to add some value to your breeding program.

PROFIT Plus\$ Your source for trouble-free, productive, long-living & profitable cows.

Available Pre-Purchase Only	Pro\$	IMM	F&P (kg)	HL	MAST RESIST	DF	NM\$
3Star Oh MCRANGER *RC	\$3987	116	169	114	108	107	986
Kings-Ransom DREW	\$3955	98	243	106	102	103	1132
Cookiecutter COLOSSAL	\$3805	106	210	106	108	103	1061
Peak HOMEGROWN	\$3786	114	222	107	107	103	1160
OCD CONNOR	\$3717	108	205	108	109	104	1063
Westcoast RIVER • Proven	\$3289	116	158	106	114	105	878

Check out our expanded **PROFIT Plus\$** Line-up!

Progenesis

AMBROSE *RC



Ranger-Red x VG-89 Lambda x EX-94-3E 5* x EX-93-2E-USA 3* x VG-88 13* x EX-90-2E 12* x 8 more generations of VG or EX dams



Dam: Mystique Lambda Anis VG-89-4YR-CAN

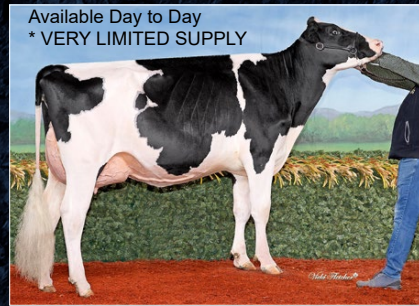
GPA LPI +3731
CONFORMATION +14
GPA 23* AUG

Ambrose exemplifies artful breeding at its exceptional best! From 13 generations of VG or EX dams, Ambrose descends from an impactful maternal line celebrated for their remarkable lifetime production and elite type.

DREWHOLME
LEYHIGH PP



A2P2 PP x VG-88 x EX-90 1* x EX-92-4E 4* x VG 3* x VG x VG x EX-90 10* x the World-Famous "Lustre" (2x Royal Winter Fair winner, 2x All-Canadian)



Dam: Drewholme Lambda Leysure P VG-88-3YR-CAN

GPA LPI +3459
CONFORMATION +11
GPA 23* AUG

Leyhigh represents one of the most complete pedigreed homozygous polled bulls offered ever! Leyhigh's maternal line stems from 16 generations of VG or EX dams spanning over 80 years from one of Canada's most amazing families – *the Lustres!*

Additions to EastGen's Holstein Line-Up

Progenesis **TAHOE *RC** 3825 GPA LPI \$3743 Pro\$ **+10 CONF**

aAa: 243561 Ranger-Red x Zazzle x VG x VG-88 1* x VG 3* x VG-2YR x VG-88 x EX x EX-91 GMD DOM x VG-2YR GMD DOM

✓ Tahoe is an exciting Red Carrier, A2A2 & BB Ranger-Red son who will sire extremely healthy calves & cows (105 Calf Immunity, 114 Immunity) Expect solid production with high deviations (+.56% Fat, +.27% Protein) & a type profile that will tick all of the boxes (+10 Conf., 2.26 PTAT).



Progenesis **KIRK** 3684 GPA LPI \$3254 Pro\$ **+11 CONF**

aAa: 243165 Lugnut x VG-87 Lambda x EX-90-4E 9* x VG-88 17* x VG-87 14* x VG-87 16* x EX-90 3* x VG

✓ An A2A2 and Robot Ready® designated Lugnut from a family flush with Star Brood cows and potential to leave very high producing daughters (+2144 Milk). Expect a type profile (+11 Conf., 1.98 PTAT) that will lead to long-living (106 HL), profitable cows.



New Short Supply Sires

Pre-Purchase Only Sires *		IMM	GPA LPI	Pro\$	MILK	CONF
0200H007992	3star Oh ROMANER *RC (Ranger-Red x Einstein)	116	3910	3780	1557	8
0200H012511	Progenesis LATESHOW *RC (Ranger-Red x Highjump)	115	3902	3772	825	10
0200H012445	Comestar LAMORREY *RC (Ranger-Red x Impression)	109	3491	2607	531	10
0200H012608	Hulsdale MAGNETO PP (A2P2-PP x Mirand)	95	3251	1842	703	11

* Pre-Purchase Only: Call 1-888-821-2150 to order semen today!



NEW Pre-Purchase Only SEXED Additions *

	GPA LPI	Pro\$	IMM	MILK	% FAT	CONF
Progenesis KALAHARI *RC (Ranger-Red x Lambda)	3865	3662	108	1507	+28	12
Progenesis TROY *RC (Ranger-Red x Zazzle)	3864	3875	111	1028	+65	11
Progenesis RUBBLE (Conway x Einstein) *Limited Supply	3779	3304	109	801	+70	8
Siemers PARBO *RC (Ranger-Red x Lambda) *Limited Supply	3737	3554	112	1257	+17	9
Progenesis KELO (Lugnut x Lambda)	3731	3404	104	1876	+07	11
Mystique ANIMATION *RC (Ranger-Red x Rozume)	3728	3145	109	1076	+38	12
Dubenoit KRAKEN (Lugnut x Positive)	3634	3026	95	2210	+28	11

* Pre-Purchase Only: Call 1-888-821-2150 to order semen today!

Our current list of 27 sexed semen sires average over +3450 LPI & +11 for type and includes 12 sires available **Day-To-Day!**



NEW Day to Day Sexed Additions

Progenesis **RIVERDANCE**: This A2A2 red carrier Ranger-Red son is backed by 14 gen. of VG or EX dams tracing back to the amazing "Dellia". Riverdance offers solid production with impressive deviations (+.42%F, +.21%P, & unreal health traits including his HL (113), Immunity (115) and Calf Immunity (109). With a type profile and +12 Conformation, Riverdance is a value-packed commodity.



AOT HIGHLIFE-P-RED: Highlife, a Latenite who also stems from the great Dellia family, is an exciting heterozygous polled and outcross Red option being made available sexed day to day. Highlife has a balanced profile with udders (+9 MS) and Feet & Legs (+9) suited for any environment.

