

COMESTAR  
**LEMAGIC**

CHIEF X IMPRESSION X COMESTAR LAMADONA DOORMAN EX-94-2E-CAN 19\*

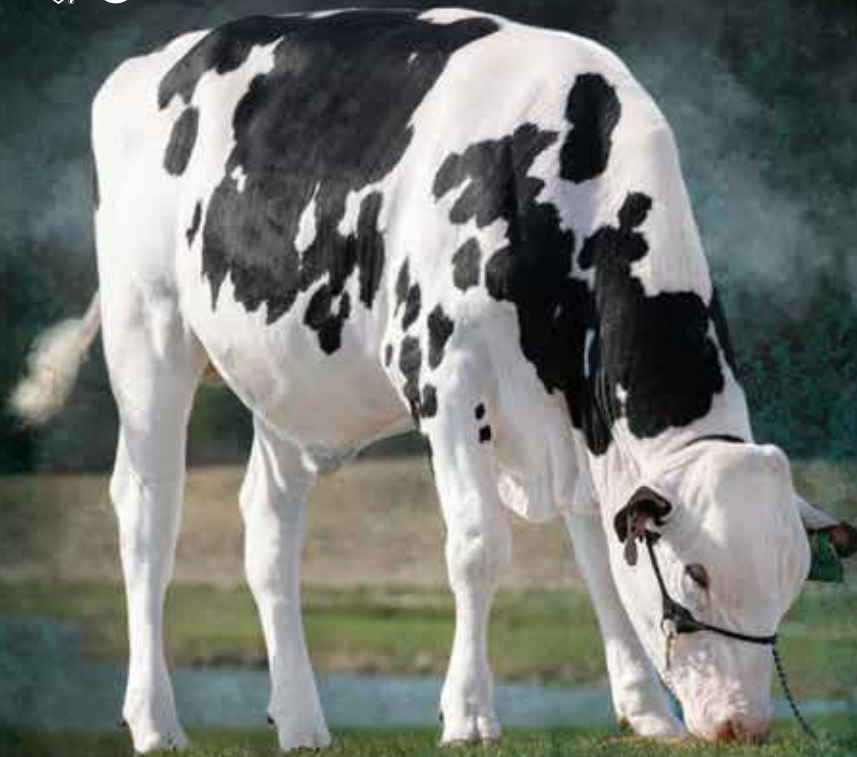


PHOTO: HOLLY MCFARLANE

|                               |
|-------------------------------|
| GPA LPI <b>+3232</b>          |
| CONFORMATION <b>+13</b>       |
| MAMMARY SYSTEM <b>+9</b>      |
| FEET & LEGS <b>+8</b>         |
| DAIRY STRENGTH <b>+10</b>     |
| RUMP <b>+9</b>                |
| MILK <b>+737</b>              |
| FAT % <b>+50 (+0.20%)</b>     |
| PROTEIN % <b>+34 (+0.08%)</b> |
| LOIN <b>+9</b>                |

GPA 22\*APR



A beautifully bred Chief from the most impactful family in Holstein genetics worldwide over the past 35 years - **the Laurie Sheiks!** **LEMAGIC** represents artful breeding at its refined, very best. From countless generations of the most exciting and successful transmitters of the day, **LEMAGIC** is destined to magically turn your dreams into reality!

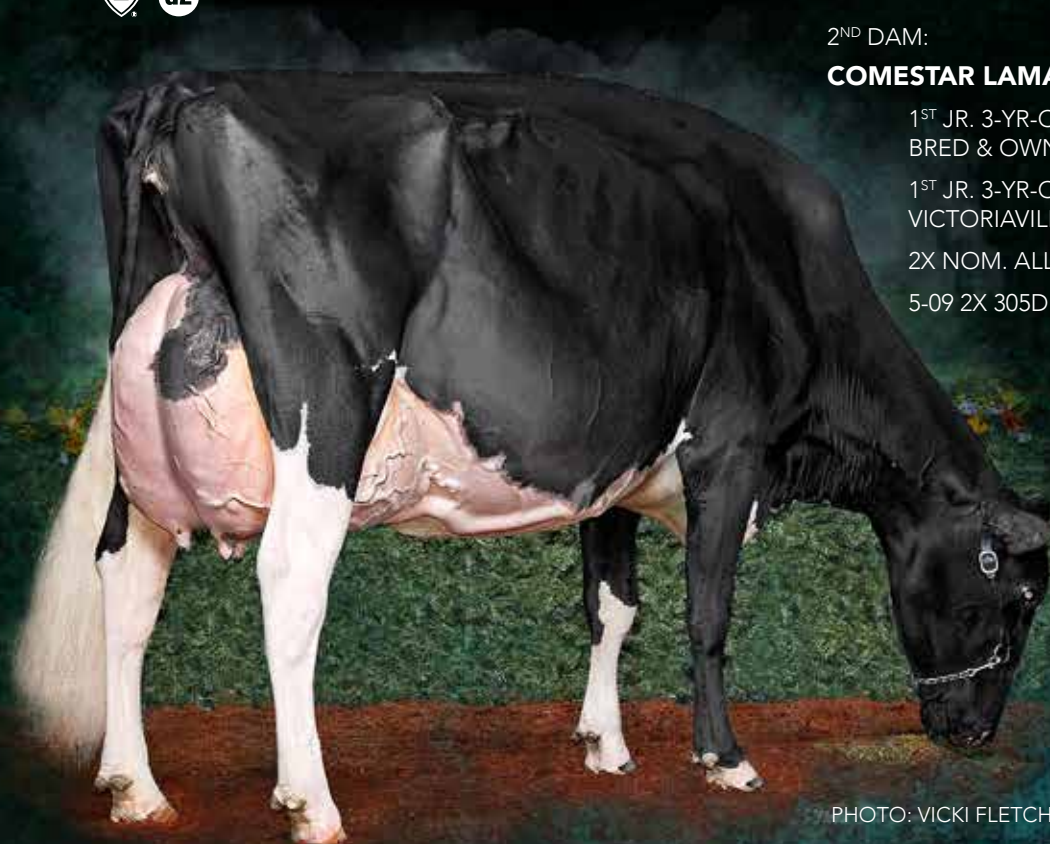
DAM (PICTURED RIGHT): COMESTAR LAMAGIC IMPRESSION VG-89-3YR-CAN  
3-01 RX 305D 12,232 540 4.4 437 3.6  
PHOTO: CARL SAUCIER

# COMESTAR LEMAGIC

CHIEF X IMPRESSION X COMESTAR LAMADONA DOORMAN EX-94-2E-CAN 19\*



## BREEDER'S EDGE



2<sup>ND</sup> DAM:

**COMESTAR LAMADONA DOORMAN EX-94-2E-CAN 19\***

1<sup>ST</sup> JR. 3-YR-OLD, GENETIC & PRODUCTION AWARDS,  
BRED & OWNED, WDE 2016

1<sup>ST</sup> JR. 3-YR-OLD, INTER. CH. & RES. GR. CHAMPION  
VICTORIAVILLE 2016

2X NOM. ALL-AMERICAN, 3X NOM. ALL-CANADIAN

5-09 2X 305D 22,383 1076 4.8 803 3.6

PHOTO: VICKI FLETCHER

3<sup>RD</sup> DAM: COMESTAR LAUTAMAI MAN O MAN VG-87-2YR-CAN 18\*  
2-01 2X 305D 15,918 676 4.3 537 3.4

4<sup>TH</sup> DAM: COMESTAR LAUTAMA GOLDWYN VG-88-3YR-CAN 22\*  
6-04 18,069 865 4.8 577 3.2

5<sup>TH</sup> DAM: COMESTAR LAUTAMIE TITANIC VG-89-2YR-CAN 33\*  
4-05 2X 305D 18,192 834 4.6 616 3.4

6<sup>TH</sup> DAM: COMESTAR LAUTELMA IGNITER VG-89-4YR-CAN 21\*  
4-02 2X 305D 19,350 923 4.8 670 3.5

LAURIE SHEIK AT COMESTAR PHOTO: PAB

7<sup>TH</sup> DAM: COMESTAR LAUTELLE EMERSON VG-85-2YR-CAN 2\*  
2-02 2X 305D 11,829 460 3.9 422 3.6

8<sup>TH</sup> DAM: COMESTAR LAUSAN BLACK VG-87-6YR-CAN 23\*  
5-04 2X 305D 14,844 630 4.2 517 3.5

9<sup>TH</sup> DAM: COMESTAR LAURIE SHEIK VG-88-5YR-CAN 23\*  
HOLSTEIN CANADA COW OF THE YEAR 1995  
6-09 2X 305D 12,046 531 4.4 398 3.3

10<sup>TH</sup> DAM: ELYSA ANTHONY LEA EX-CAN 15\*  
6-02 2X 305D 14,412 559 3.9 416 2.9



  
www.eastgen.ca