

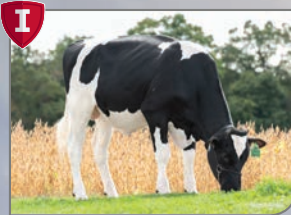
Semen Sales: Genomic bull availability can change on a daily basis. To reserve semen on a specific sire on a first-come-first-serve basis or learn more about availability, call your local EastGen Regional Sales Representative.

Ventes de semence : La disponibilité des taureaux génomiques peut changer tous les jours. Pour réserver la semence d'un taureau spécifique selon le principe de premier arrivé, premier servi, communiquez avec votre représentant commercial régional d'EastGen.

Insemination Service: Keep this list by your phone. Call EastGen's dispatch to find out which Premier Program Genomic Sires will be available today.
Service d'insémination : Gardez cette liste près de votre téléphone. Appelez le service de répartition d'EastGen pour savoir quels taureaux génomiques du programme Premier seront disponibles aujourd'hui.

To reference individual extended pedigrees on each bull please go to www.eastgen.ca and click on Premier Program button on the home page.
Pour accéder à la généalogie individuelle de chaque taureau, veuillez vous rendre à www.eastgen.ca et cliquer sur bouton du Programme Premier dans la page d'accueil.

WESTCOAST MIDMARCH
200HO12158 HOCANM13636750



You Pay * \$18

SIRE: CLAYNOOK ZASBERILLA
DAM: FLY-HIGHER RNEGADE MARCH
MGS: S-S-I PR RENEGADE
MGGs: ENDCO SUPERHERO
GPA LPI/IPV MPG +3650
PRO\$ \$3649 M/L +942
F/G +125 (+0.79) P +77 (+0.37)
Conf. +5 Mastitis Resistance/
Résistance à la mammite 105
Calving Ability/Apt. au vêlage 103

SIEMERS BALLGAME

200HO12275 HO840M3212996888



You Pay * \$18

SIRE: BOMAZ FASTBALL
DAM: SIEMERS HUEY PARI 31034
MGS: T-SPRUCE FRAZZLED HUEY
MGGs: FARNEAR DELTA-LAMBDA
GPA LPI/IPV MPG +3486
PRO\$ \$3021 M/L +1787
F/G +95 (+0.22) P +76 (+0.14)
Conf. +6 Mastitis Resistance/
Résistance à la mammite 100
Calving Ability/Apt. au vêlage 102

JIMTOWN NASHVILLE

200HO12191 HO840M3150919059



You Pay * \$20

"Limited Supply"

SIRE: PEAK TROPIC
DAM: JIMTOWN KD NARCISA
MGS: WOODCREST KING DOC
MGGs: VAL-BISSON DOORMAN
GPA LPI/IPV MPG +3423 PRO\$ \$2879
M/L +1321 F/G +92 (+0.35)
P +65 (+0.17) Conf. +11
Mastitis Resistance/Résistance à la mammite 102
Calving Ability/Apt. au vêlage 104

First and only Fuel son!

HAVENVALLEY SEVEN

200HO12285 HOCANM13760518



You Pay * \$18

"While supplies last"

SIRE: MELARRY FUEL
DAM: HAVENVALLEY ERIC BREEZE
MGS: SILVERRIDGE V ERIC
MGGs: GENERATIONS EPIC
GPA LPI/IPV MPG +2966
PRO\$ \$1600 M/L + 1114
F/G +42 (-0.01) P +26 (-0.09)
Conf. +10 Mastitis Resistance/
Résistance à la mammite 102
Calving Ability/Apt. au vêlage 99

Elite Type & Immunity+

TAPPENVALE MURANO P *RC

200HO12160 HOCANM13756261



You Pay * \$25

"Limited Supply"

SIRE: COOMBOONA ZIPIT MIRAND-PP
DAM: TAPPENVALE DOORMAN MISSY
MGS: VAL-BISSON DOORMAN
GPA LPI/IPV MPG +2934
PRO\$ \$1239 M/L + 209
F/G +32 (+0.21) P +22 (-0.12)
Conf. +13 Mastitis Resistance/
Résistance à la mammite 101
Calving Ability/Apt. au vêlage 97
Rel 82%

Technician's Choice -> Genomax Plus

= High Fertility + Calving Ease

BLUMENFELD ZEBRA *RC

200HO11200 HO840M3141657502



You Pay * \$18

SIRE: ENDCO APPRENTICE
DAM: BLUMENFELD 4508 SPR 5054
MGS: WESTENRADE SPRING
GPA LPI/IPV MPG +3201
PRO\$ \$2601 M/L + 2356
F/G +56 (-0.31) P +76 (-0.02)
Conf. +4 Mastitis Resistance/
Résistance à la mammite 104
Calving Ability/Apt. au vêlage 106 *
Rel 93% Bull Fertility/ Fertilité du taureau 62 * Rel 50%

* Net price for qualifying herds that classify and milk record

* Prix net pour les troupeaux admissibles qui utilisent la classification et le contrôle laitier.

If not on milk recording & classification - standard Loyalty Levels apply

Pour ceux qui n'utilisent pas le contrôle laitier et la classification, les niveaux de fidélité standards s'appliquent.

Designations
Désignations



Premier Program

Programme Premier
GPA/MPG - CDN*12/21

Production

Conformation, Health & Management / Caractères de santé et de fertilité

Code / Code	Sire MGS / Père GPM	GPA LPI IPV/MPG	Pro \$	Milk / Lait (kg)	Fat / Gras (kg)	% Dev. / Différ.	Protein (kg) Prot.	% Dev. / Différ.	Conformation	Mamm. Syst. Mamm.	F&L Pieds et mbres	Dairy Strength Puissance laitière	Rump / Croupe	Herd Life Durée de vie	Mastitis Resistance Résistance à la mammite	Dau Fertility Fertilité des filles	Milking Speed Vit. traite	Milking Temp. Temp. traite	Calving Ability Apt. au vêlage	Dau Calving Ability Apt. des filles au vêlage	Bull Fertility Fertilité du taureau
0200H012158	WESTCOAST MIDMARCH Zasberilla x Renegade	3650	3649	942	125	.79	77	.37	5	5	3	2	0	109	105	105	101	100	103	109	
0200H012275	Siemers BALLGAME Fastball x Huey	3486	3021	1787	95	.22	76	.14	6	5	6	3	3	105	100	106	104	99	102	103	
0200H012191	JIMTOWN NASHVILLE Tropic x Doc	3423	2879	1321	92	.35	65	.17	11	8	10	9	1	101	102	100	101	102	104	107	
0200H012285	HAVENVALLEY SEVEN Fuel x Eric	2966	1600	1114	42	-.01	26	-.09	10	4	9	9	10	104	102	98	104	99	99	106	
0200H012160	TAPPENVALE MURANO P *RC Mirand x Doorman	2934	1239	209	32	.21	22	.12	13	10	8	10	8	99	101	98	101	104	97	98	
<i>Technician's Choice -> Genomax Plus = High Fertility + Calving Ease</i>																			* Official Proof / Épreuve officielle		
200H011200	BLUMENFELD ZEBRA *RC Apprentice x Spring	3201	2601	2356	56	-.31	76	-.02	4	5	1	0	1	106	104	104	97	102	106*	108	62*



Beef Profit Program

These Big Top high performance sires are on special for the You Pay price of \$14!

Effective December 15th, 2021 to March 31st, 2022
(While supplies last)

4 Breeding strategies to meet the market demands

Ask your calf buyer what they are looking for...

Pick from the genetic categories below to customize your program to meet the needs of your buyer.

1 Angus Profit Booster

Sires selected for this category will deliver:

- Thick, visually appealing calves
 - Exceptional carcass traits
 - Predominantly black and polled
 - Moderate birth weight
- \$28 retail**

2 Angus Powermix

Sires selected for this category will deliver:

- Industry leading fertility
- Small birth weight - ideal for heifers
- Predominantly black and polled

Limited Supply
\$28 retail

3 Blue Boys

Sires selected for this category will deliver:

- Heavy muscle calves at an early age
- Moderate birthweights
- Blue power mix available

Limited Supply
\$28 retail

4 Big Tops

Sires selected for this category will deliver:

- Extra thick calves
- Visually appealing
- Large ribeye values
- Limo, Lim-flex, Simmental, Sim-Angus sires

\$28 retail

0200SM30352



BEEFMAKER

0200LM60312



FORMATION

0200SM30345



GREAT WESTERN

0200SM30346



GROWLER

The following breeds are available to meet your breeding goals through EastGen's expanded beef line-up:
Speckle Park, Waygu, Charolais, Hereford, & Belgium Blue