

BREEDER'S EDGE

MATTENHOF GENIE CHIEF X ATWOOD



Photo: KeLeKi

GPA LPI **+2908**

MILK **+465**

CONFORMATION **+12**

MAMMARY SYSTEM **+9**

DAIRY STRENGTH **+7**

FEET & LEGS **+11**

RUMP **+5**

REAR ATT. WIDTH **+12**

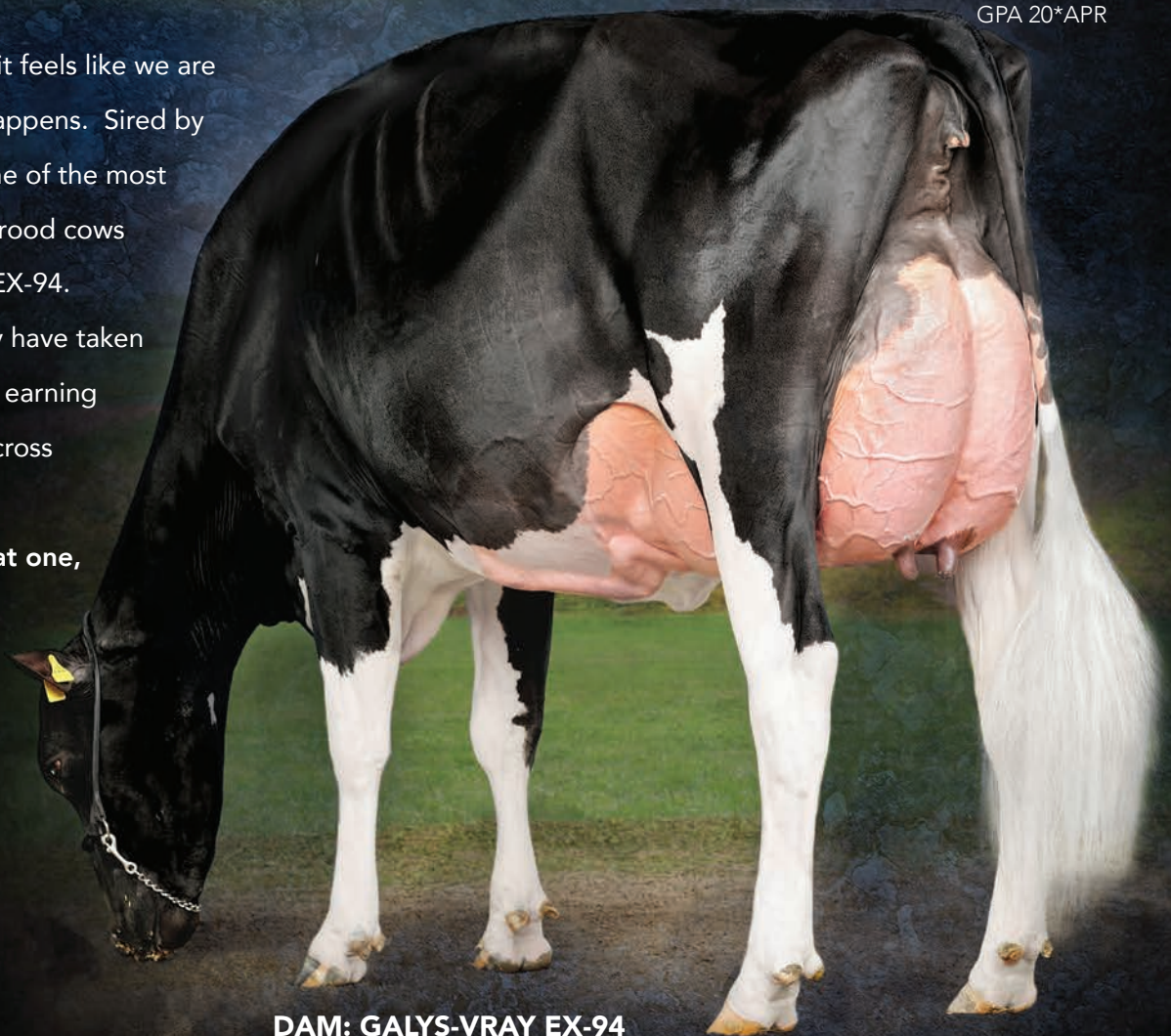
A2A2

GPA 20*APR

With Mattenhof **GENIE**, it feels like we are witnessing history as it happens. Sired by **CHIEF**, **GENIE** is from one of the most talked about show and brood cows of the breed Galys-Vray EX-94.

Galys-Vray and her family have taken the world by storm while earning championship banners across Europe.

Don't just wish for a great one,
make one with **GENIE!**



DAM: GALYS-VRAY EX-94

Grand Champion European Holstein Show Colmar 2016

Grand Champion & Supreme Champion Swiss Expo 2016

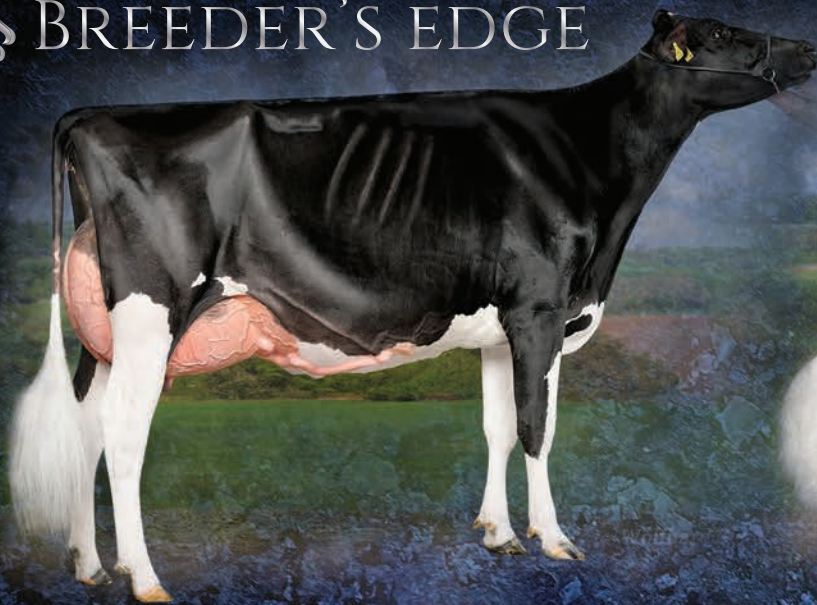
Grand Champion Expo Bulle & Res. Grand Champion Swiss Expo 2015

Jr. Milking Champion Swiss Expo 2014

Photo: Wolfhard Schulze


EastGen
www.eastgen.ca

BREEDER'S EDGE



CHIEF X GALYS-VRAY (ATWOOD) EX-94

04-05 305 11,989M 459 3.8F 399 3.3P

2ND DAM IS AN EX-92 DAMION

06-04 305 11,637 390 3.4F 379 3.3P

3RD DAM IS AN EX-90 LEADOFF

04-04 305 10,817 386 3.6F 328 3.0P

4TH DAM IS AN EX-90 ASTRE



HANNA-VRAY EX-95-3E (EX-97 MAMMARY)

FULL SISTER TO DAM

05-02 305 11,551M 404 3.5F 414 3.6P

RESERVE GRAND CHAMPION - SWISS EXPO 2020

GRAND CHAMPION UDDER - SWISS EXPO 2020



MATTENHOF SOLOMON GEORGINA VG-86-2YR

MATERNAL SISTER TO GENIE

02-03 275 7,310M 292 4.0F 258 3.5P

2ND PLACE FEMALE, CATEGORY 13 - SWISS EXPO 2020



MATTENHOF BEEMER GEORGIA VG-85-2YR

MATERNAL SISTER TO GENIE

02-03 250 8,365M 286 3.4F 266 3.2P

1ST PLACE FEMALE, CATEGORY 13 - SWISS EXPO 2020

Photos: Wolfhard Schulze


www.eastgen.ca