

Semen Sales: Genomic bull availability can change on a daily basis. To reserve semen on a specific sire on a first-come-first-serve basis or learn more about availability, call your local EastGen Regional Sales Representative.

Ventes de semence : La disponibilité des taureaux génomiques peut changer tous les jours. Pour réserver la semence d'un taureau spécifique selon le principe de premier arrivé, premier servi, communiquez avec votre représentant commercial régional d'EastGen.

Insemination Service: Keep this list by your phone. Call EastGen's dispatch to find out which Premier Program Genomic Sires will be available today.

Service d'insémination : Gardez cette liste près de votre téléphone. Appelez le service de répartition d'EastGen pour savoir quels taureaux génomiques du programme Premier seront disponibles aujourd'hui.

To reference individual extended pedigrees on each bull please go to www.eastgen.ca and click on Premier Program button on the home page.

Pour accéder à la généalogie individuelle de chaque taureau, veuillez vous rendre à www.eastgen.ca et cliquer sur bouton du Programme Premier dans la page d'accueil.

AOT HOLIDAY

200HO12088 HO840M3212245686



SIRE: PROGENESIS PYRAMID
DAM: AOT FABULOUS HENLEY
MGS: PROGENESIS FABULOUS
MGGs: MR MOGUL DELTA 1427

GPA LPI/IPV MPG +3519 PRO\$ \$3184
M/L + 791 F/G +97 (+0.60)
P +57 (+0.26) Conf. +8
Calving Ability/Apt. au vêlage 105
Mastitis Resistance/Résistance à la mammite 108

Retail: \$38 You Pay * \$16

BOMAZ STEADY-P

200HO11881 HO840M3202241175



SIRE: HOLYLAND SIMPLICITY-P-RC
DAM: BOMAZ SALVATORE 7881
MGS: MR SALVATORE RC
MGGs: SEAGULL-BAY SILVER

GPA LPI/IPV MPG +3262 PRO\$ \$2408
M/L +807 F/G +80 (+0.45)
P +35 (+0.08) Conf. +8
Calving Ability/Apt. au vêlage 100
Mastitis Resistance/Résistance à la mammite 104

You Pay * \$18

Technician's Choice -> Genomax Plus

= High Fertility + Calving Ease

SILVERRIDGE V CIRCUS

200HO11587 HOCANM12857537



SIRE: COOKIECUTTER MD HARDROCK
DAM: SILVERRIDGE V DUKE EMAIL
MGS: S-S-I MONTROSS DUKE

GPA LPI/IPV MPG +3291
PRO\$ \$2814 M/L +1685
F/G +94 (+0.26) P +71 (+0.13)
Conf. +6 Mastitis Resistance/
Résistance à la mammite 103
Calving Ability/Apt. au vêlage 100
Rel 94% Bull Fertility/ Fertilité du taureau 59 Rel 89%

You Pay \$18

* Net price for qualifying herds that classify and milk record

* Prix net pour les troupeaux admissibles qui utilisent la classification et le contrôle laitier.

If not on milk recording & classification - standard Loyalty Levels apply

Pour ceux qui n'utilisent pas le contrôle laitier et la classification, les niveaux de fidélité standards s'appliquent.


September/septembre 2021

Elite Type

MCINTOSH CALMAC SIDEROAD

200HO11654 HOCANM13077511



SIRE: WALNUTLAWN SIDEKICK
DAM: SANDY-VALLEY EUC HERSHEY
MGS: SILVERRIDGE V EUCLID

GPA LPI/IPV MPG +3168
PRO\$ \$1886 M/L +69
F/G +62 (+0.52) P +20 (+0.15)
Conf. +14 Mastitis Resistance/
Résistance à la mammite 108
Calving Ability/Apt. au vêlage 104

You Pay * \$18

"While supplies last"

Elite Production

PEAK RELAY

200HO11748 HOCANM13353512



SIRE: PROGENESIS POSITIVE
DAM: GENOSOURCE REFLECT
MGS: MELARRY JOSUPER FRAZZLED

GPA LPI/IPV MPG +3413
PRO\$ \$3103 M/L +2070
F/G +115 (+0.29) P +82 (+0.10)
Conf. +6 Mastitis Resistance/
Résistance à la mammite 101
Calving Ability/Apt. au vêlage 101

You Pay * \$18

"While supplies last"

Elite Red & White

RASBERRY REVERE-RED

200HO11819 HO840M3204145346



SIRE: RIVERDOWN UNSTOPABULL
DAM: GDR-KINGS BAILEY 50878
MGS: MR DG-TM KING BAILEY

GPA LPI/IPV MPG +2861
PRO\$ \$1313 M/L +578
F/G +7 (-0.10) P +19 (+0.01)
Conf. +10 Mastitis Resistance/
Résistance à la mammite 99
Calving Ability/Apt. au vêlage 99

You Pay * \$18

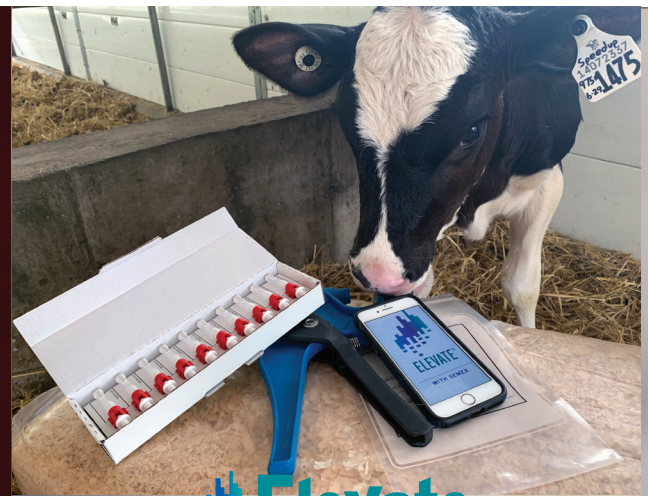
"While supplies last"




www.eastgen.ca

Designations Designations	EastGen		Premier Program Programme Premier GPA/MPG - CDN*08/21		Production							Conformation, Health & Management / Caractères de santé et de fertilité												
	Code / Code	Sire MGS / Père GPM	GPA LPI IPV/MPG	Pro \$	Milk / Lait (kg)	Fat / Gras (kg)	% Dev. / Différ.	Protein (kg) Prot.	% Dev. / Différ.	Conformation	Mamm Syst. Mamm.	F&L Pieds et mbres	Dairy Strength Puissance laitière	Rump / Croupe	Herd Life Durée de vie	Mastitis Resistance Résistance à la mammite	Dau Fertility Fertilité des filles	Milking Speed Vit. traite	Milking Temp. Temp. traite	Calving Ability Apt. au vêlage	Dau Calving Ability Apt. des filles au vêlage	Bull Fertility Fertilité du taureau		
EU	0200H012088	AOT HOLIDAY	Pyramid x Fabulous	3519	3184	791	97	.60	57	.26	8	8	5	3	1	108	108	105	100	103	105	108	-	
T EU	0200H011881	BOMAZ STEADY-P	Simplicity-P-RCxSalvatore RC	3262	2408	807	80	.45	35	.08	8	7	9	3	2	108	104	99	100	101	100	106	62	
<i>Technician's Choice</i> -> Genomax Plus = High Fertility + Calving Ease																								
T a2	0200H011587	Silverridge V CIRCUS	Hardrock x Duke	3291	2814	1685	94	.26	71	.13	6	5	0	9	2	104	103	101	102	108	100	105	59	
Genomax																								
a2 EU	0200H011748	PEAK RELAY	Positive x Frazzled	3413	3103	2070	115	.29	82	.10	6	3	4	8	4	103	101	101	107	100	101	101	60	
EU	0200H011654	MCINTOSH CALMAC SIDEROAD	Sidekick x Euclid	3168	1886	69	62	.52	20	.15	14	11	7	11	7	103	108	97	99	107	104	100	58	
T EU	0200H011819	RASBERRY REVERE-RED	Unstopabull x Bailey*RC	2861	1313	578	7	-.10	19	.01	10	10	8	4	1	104	99	102	103	107	99	103	59	

SOLUTIONS TO ELEVATE YOUR GENETICS

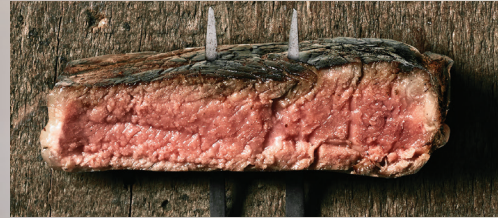


Let Elevate™ Help You Make Better Decisions

- Discover undesirable Haplotypes and manage them with our strategic Optimate™ mating program. Also identify beneficial A2A2 and Polled genes.
- Get our exclusive Immunity+™

results on your females.

- Experience competitive pricing, sampling convenience, and ease of use with features such as our phone app.
- Call on us to assist with turning your results into a strategic plan to expedite your herd's genetic progress.



Beef Profit Program

4 Breeding strategies to meet the market demands
Ask your calf buyer what they are looking for... Pick from the genetic categories below to customize your program to meet the needs of your buyer.

1 Angus Profit Booster
Sires selected for this category will deliver:

- Thick, visually appealing calves
- Exceptional carcass traits
- Predominantly black and polled
- Moderate birth weight

\$28 retail

2 Angus Powermix
Sires selected for this category will deliver:

- Industry leading fertility
- Small birth weight - ideal for heifers
- Predominantly black and polled

Limited Supply \$28 retail

3 Blue Boys
Sires selected for this category will deliver:

- Heavy muscle calves at an early age
- Moderate birthweights
- Blue power mix available

Limited Supply \$28 retail

4 Big Tops
Sires selected for this category will deliver:

- Extra thick calves
- Visually appealing
- Large ribeye values
- Limo, Lim-flex, Simmental, Sim-Angus sires

\$28 retail

The following breeds are available to meet your breeding goals through EastGen's expanded beef line-up: Speckle Park, Waygu, Charolais, Hereford, & Belgian Blue