

Semen Sales: Genomic bull availability can change on a daily basis. To reserve semen on a specific sire on a first-come-first-serve basis or learn more about availability, call your local EastGen Regional Sales Representative.

Ventes de semence : La disponibilité des taureaux génomiques peut changer tous les jours. Pour réserver la semence d'un taureau spécifique selon le principe de premier arrivé, premier servi, communiquez avec votre représentant commercial régional d'EastGen.

Insemination Service: Keep this list by your phone. Call EastGen's dispatch to find out which Premier Program Genomic Sires will be available today.

Service d'insémination : Gardez cette liste près de votre téléphone. Appelez le service de répartition d'EastGen pour savoir quels taureaux génomiques du programme Premier seront disponibles aujourd'hui.

To reference individual extended pedigrees on each bull please go to www.eastgen.ca and click on Premier Program button on the home page.

Pour accéder à la généalogie individuelle de chaque taureau, veuillez vous rendre à www.eastgen.ca et cliquer sur bouton du Programme Premier dans la page d'accueil.



Retail: \$30

You Pay * \$12



PROGENESIS CINNAMON

0200HO10981 HOCANM12648499

SIRE: S-S-I HEADWAY ALLTIME
DAM: WELCOME YODER CALLO
MGS: WOODCREST MOGUL YODER
MGGS: DE-SU BKM MCCUTCHEN 1174

GPA LPI/IPV MPG +3353 PRO\$ \$2613
M/L +1239 F/G +78 (+0.28) P +66 (+0.23)
Conf. +7 SCS/CS 2.70
Calving Ability/Apt. au vêlage 100



Retail: \$38

You Pay * \$16



PROGENESIS WEBSTER-P *RC

0200HO11038 HOCANM12648638

SIRE: OCD RODGERS FRANCHISE
DAM: RI-VAL-RE DELTA WING-P
MGS: MR MOGUL DELTA 1427
MGGS: DA-SO-BURN MOM EARNHARDT

GPA LPI/IPV MPG +3306 PRO\$ \$2531
M/L +1695 F/G +75 (+0.12) P +71 (+0.14)
Conf. +9 SCS/CS 2.85
Calving Ability/Apt. au vêlage 106



Dam: Claynook Fabby Silver

Retail: \$35

You Pay * \$14



CLAYNOOK FARWELL

0200HO10987 HOCANM12571540

SIRE: WILLSBRO ABBOTT
DAM: CLAYNOOK FABBY SILVER
MGS: SEAGULL-BAY SILVER
MGGS: DE-SU BKM MCCUTCHEN 1174

GPA LPI/IPV MPG +3328 PRO\$ \$2555
M/L +1250 F/G +68 (+0.20) P +60 (+0.17)
Conf. +12 SCS/CS 2.64
Calving Ability/Apt. au vêlage 105

Technician's Choice ⇒ Genomax Plus = High Fertility + Calving Ease

You Pay \$18



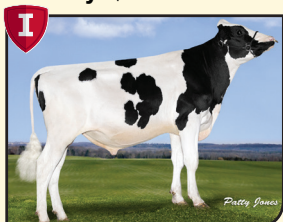
VOGUE MANSFIELD

0200HO10750 HOCANM12187036

SIRE: COGENT SUPERSHOT
DAM: SNOWBIZ MCCUTCHEN LOTTIE
MGS: DE-SU BKM MCCUTCHEN 1174
GPA LPI/IPV MPG +3053 PRO\$ \$2155
M/L +1681 F/G +30 (-0.28) P +53 (-0.02)
Conf. +9 SCS/CS 2.60

Calving Ability/Apt. au vêlage 104 Rel 88%
Bull Fertility/ Fertilité du taureau 61 Rel 84%

You Pay \$16



IHG DISCUSSION

0200HO10494 HOUSAM73963346

SIRE: STE ODILE PURE
DAM: SPEEK-NJ UNO DANCE
MGS: AMIGHETTI NUMERO UNO
GPA LPI/IPV MPG +2975 PRO\$ \$2114
M/L +1517 F/G +57 (+0.00) P +54 (+0.03)
Conf. +9 SCS/CS 2.97

Calving Ability/Apt. au vêlage 104 Rel 90%
Bull Fertility/ Fertilité du taureau 60 Rel 69%

ELITE PRO\$



You Pay \$16

"While supplies last"



PROGENESIS PASSPORT

0200HO10951 HOCANM12529317

SIRE: S-S-I MONTROSS JEDI
DAM: PROGENESIS ENFORCER PAT
MGS: MR LOOKOUT P ENFORCER

GPA LPI/IPV MPG +3438 PRO\$ \$2869
M/L +2293 F/G +61 (-0.25) P +85 (+0.07)
Conf. +8 SCS/CS 2.63
Calving Ability/Apt. au vêlage 99

ELITE TYPE



You Pay \$16

"While supplies last"



AARDEMA DIAGO

0200HO11124 HO840M3138766294

SIRE: OCD COMMANDER LINCOLN
DAM: WFC KB DAIQUIRI 9466
MGS: MORNINGVIEW MCC KINGBOY

GPA LPI/IPV MPG +3331 PRO\$ \$2222
M/L +787 F/G +29 (-0.01) P +47 (+0.18)
Conf. +15 SCS/CS 2.58
Calving Ability/Apt. au vêlage 100

Designations Désignations	Premier Program Programme Premier GPA/MPG - CDN*4/18		Production								Conformation, Health & Management / Caractères de santé et de fertilité												
	Code / Code	Sire MGS / Père GPM	GPA LPI IPV MPG	Pro \$	Milk / Lait (kg)	Fat / Gras (kg)	% Dev. / Différ.	Protein (kg) Prot.	% Dev. / Différ.	Conformation	Mamm. Syst. Mamm.	F&L Pieds et imbres	Dairy Strength Puissance laitière	Rump / Croupe	Herd Life Durée de vie	Som Cell Sc. Cell. som.	Mastitis Resistance Résistance à la mammitte	Dau Fertility Fertilité des filles	Milking Speed Vit. traite	Milking Temp. Temp. traite	Calving Ability Apt. au vêlage	Dau Calving Ability Apt. des filles au vêlage	Bull Fertility Fertilité du taureau
0200H010981	Progenesis CINNAMON	Alltime x Yoder	3353	2613	1239	78	.28	66	.23	7	8	7	1	-4	110	2.70	105	111	101	107	100	113	n/a
0200H011038	Progenesis WEBSTER-P*RC	Franchise x Delta	3306	2531	1695	75	.12	71	.14	9	9	6	3	3	109	2.85	105	107	101	103	106	112	n/a
0200H010987	Claynook FARWELL	Abbott x Silver	3328	2555	1250	68	.20	60	.17	12	12	11	5	3	110	2.64	107	102	108	101	105	110	59
Technician's Choice ⇒ Genomax Plus = High Fertility + Calving Ease																							
0200H010750	Vogue MANSFIELD	Supershot x Mccutchen	3053	2155	1681	30	-.28	53	-.02	9	9	6	4	6	108	2.60	108	106	95	108	104	112	61
0200H010494	IHG DISCUSSION	Pure x Numero Uno	2975	2114	1517	57	.00	54	.03	9	8	8	2	4	107	2.97	97	103	109	104	104	102	60
Genomax™																							
0200H010951	Progenesis PASSPORT	Jedi x Enforcer	3438	2869	2293	61	-.25	85	.07	8	7	6	7	4	109	2.63	107	112	97	107	99	107	n/a
0200H011124	Aardema DIAGO	Lincoln x Kingboy	3331	2222	787	29	-.01	47	.18	15	18	9	6	-1	109	2.58	108	107	102	104	100	105	n/a

Bull Dams

Immunity+ Robot Ready Repromax HealthSmart Calving Ease A2A2 Genomax

Dam of **Cinnamon**



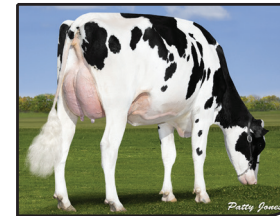
WELCOME YODER CALLO
GP-82-2YR-USA

Dam of **Farwell**



CLAYNOOK FABBY SILVER
VG-87-2YR-CAN
02-01 305 11557M 491F 4.3% 393P 3.4%

Dam of **Mansfield**



SNOWBIZ MCCUTCHEN LOTTIE
VG-87-2YR-CAN
02-02 305 10854M 416F 3.8% 345 3.2%

2nd Dam of **Discussion**



REGAN-ALH PLANET DELORIA
VG-86-2YR-USA
02-04 305 13336M 590F 4.4% 476 3.6%

Dam of **Passport**



PROGENESIS ENFORCER PAT
GP-82-3YR-CAN
02-03 305 13999M 536F 3.8% 492P 3.5%

5th Dam of **Diago**



VIEUXSAULE ALLEN DRAGONFLY
EX-94-2E-CAN
05-05 305 13814M 553F 4.0% 432P 3.1%