

JERSEY

2021

INTERACTIVE

GENOMIC

[CASPIAN](#)

[CHOCCHOCHIP](#)

[DELL](#)

[JAMIE](#)

[JORDAN](#)

[JUDO](#)

[CYRUS](#)

[HISTORY](#)

[JENIUS](#)

[SKYMAN](#)

[MAKER](#)

[VIDEO](#)

[WEBCAM](#)

PROVEN

[CRAZE](#)

[VIP](#)

[CANADIAN CONFORMATION](#)

[CONTACT US](#)



Bull: Lencrest Caspian

Caspian LENCREST CASPIAN

0200JE01215 BOURBON x VIVALDI x PREMIER



PLI: £201 ACI: £223 JPI: 51 LPI: 2011

Sire: LEGENDAIRY BOURBON by NXLEVEL
Dam: LENCREST COCOPUFF EX-92-5YR-CAN by VIVALDI
GDam: LENCREST PREMIER COCO EX-92-2E-CAN

AI Code: J2777	Reg. 76111353298	JH1F JNSF
UK PRODUCTION	dau: CAN G / UK 0 herds: CAN G / UK 0 Rel 57%	04/2021

Milk kg 283	Fat kg 19.6	Fat % 0.07	Protein kg 15.7	Protein % 0.08	PLI £201/56% Rel
-----------------------	-----------------------	----------------------	---------------------------	--------------------------	----------------------------

UK TYPE	dau: CAN G / UK 0 herds: CAN G / UK 0 Rel 59%	04/2021
----------------	---	---------

	Score	-2	-1	0	+1	+2
Type Merit	+0.30			█		
Mammary	+0.60			█		
Legs & Feet	+0.50			█		
Stature	+1.30			█	█	
Chest Width	+0.70			█		
Body Depth	+1.20			█	█	
Angularity	+1.80			█	█	█
Rump Angle	+0.30			█		
Rump Width	+0.60			█		
Rear Leg Side	-0.60		█			
Foot Angle	+0.20			█		
Fore Udd. Att.	+0.30			█		
Rear Udd. Ht.	+1.70			█	█	█
Udder Support	+0.30			█		
Udder Depth	-0.80		█			
Teat Length	+0.70			█		
Rear Teat Pl.	-0.40		█			
Teat Pos. Side	-					
Locomotion	-0.20			█		

UK MANAGEMENT			
Somatic Cell Count	10	Maternal Calving Ease %	-
Mastitis Resistance	-	TB Advantage	-
Lifespan	15	Temperament	-
Fertility Index	-4.0	Ease of Milking	-
Direct Calving Ease %	-		

Unless stated otherwise, all female pictures relating to this product can be presumed to be a daughter of the advertised sire.



Chocochip AVONLEA CHOCOCHIP

0200JE01296 V I P x PREMIER x ACTION



PLI: £-56 ACI: £68 JPI: -49 LPI: 1537

Sire: RIVER VALLEY VENUS VIP by COLTON
Dam: AVONLEA PREMIER CHOCOLATE CHIP EX-96-2E-CAN by PREMIER
GDam: AVONLEA KOOKIE DOUGH EX-93-4YR-CAN

AI Code: TBC

Reg. 7613638955 JH1F JNSF

UK PRODUCTION dau: CAN G / UK 0 herds: CAN G / UK 0 Rel 58% 04/2021

Milk kg	Fat kg	Fat %	Protein kg	Protein %	PLI
-110	-8.3	-0.04	-0.6	0.06	£-56/57% Rel

UK TYPE dau: CAN G / UK 0 herds: CAN G / UK 0 Rel 61% 04/2021

	Score	-2	-1	0	+1	+2
Type Merit	+1.20			[Progress bar]		
Mammary	+1.50			[Progress bar]		
Legs & Feet	+1.10			[Progress bar]		
Stature	+1.80			[Progress bar]		
Chest Width	+0.10			[Progress bar]		
Body Depth	+0.90			[Progress bar]		
Angularity	+1.00			[Progress bar]		
Rump Angle	-0.40			[Progress bar]		
Rump Width	+1.20			[Progress bar]		
Rear Leg Side	-0.40			[Progress bar]		
Foot Angle	+1.40			[Progress bar]		
Fore Udd. Att.	+1.60			[Progress bar]		
Rear Udd. Ht.	+1.60			[Progress bar]		
Udder Support	+2.00			[Progress bar]		
Udder Depth	+1.80			[Progress bar]		
Teat Length	+1.00			[Progress bar]		
Rear Teat Pl.	-			[Progress bar]		
Teat Pos. Side	-			[Progress bar]		
Locomotion	-			[Progress bar]		

UK MANAGEMENT

Somatic Cell Count	5	Maternal Calving Ease %	-
Mastitis Resistance	-	TB Advantage	-
Lifespan	51	Temperament	-
Fertility Index	3.0	Ease of Milking	-
Direct Calving Ease %	-		

Unless stated otherwise, all female pictures relating to this product can be presumed to be a daughter of the advertised sire.



River Valley Circus Craze daughters

Frank Robinson

Craze RIVER VALLEY CIRCUS CRAZE

0200JE10001 LEMONHEAD x PHAROAH x VALENTINO



PLI: £351 ACI: £316 JPI: 61 LPI: 1645

Sire: STEINHAUERS SAMSON LEMONHEAD by SAMSON
Dam: GOFF PHAROAH CIRCUS ACT EX-90%-3YR-USA by PHAROAH
GDam: GOFF VALENTINO 9595 VG-84%-4YR-USA

AI Code: J2569

Reg. 7675341001

JH1F JNSF

UK PRODUCTION dau: CAN 91 / UK 0 herds: CAN 52 / UK 0 Rel 79% 04/2021

Milk kg 443	Fat kg 21.9	Fat % -0.03	Protein kg 15.7	Protein % -0.02	PLI £351/81% Rel
-----------------------	-----------------------	-----------------------	---------------------------	---------------------------	----------------------------

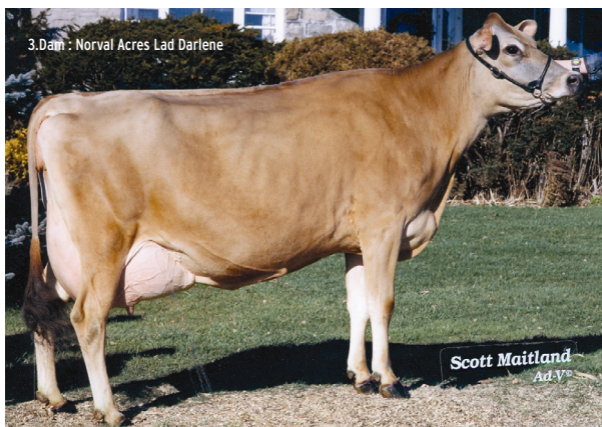
UK TYPE dau: CAN 63 / UK 0 herds: CAN 44 / UK 0 Rel 94% 04/2021

	Score	-2	-1	0	+1	+2
Type Merit	+1.80					
Mammary	+2.90					
Legs & Feet	+1.00					
Stature	+1.40					
Chest Width	-0.80					
Body Depth	-1.30					
Angularity	+2.60					
Rump Angle	-0.20					
Rump Width	+1.30					
Rear Leg Side	+0.50					
Foot Angle	+1.30					
Fore Udd. Att.	+1.10					
Rear Udd. Ht.	+3.20					
Udder Support	+4.40					
Udder Depth	+2.20					
Teat Length	+4.30					
Rear Teat Pl.	+0.60					
Teat Pos. Side	-0.40					
Locomotion	+0.30					

UK MANAGEMENT

Somatic Cell Count	-5	Maternal Calving Ease %	-
Mastitis Resistance	-1	TB Advantage	-
Lifespan	73	Temperament	0.10
Fertility Index	-2.0	Ease of Milking	-0.20
Direct Calving Ease %	-		

Unless stated otherwise, all female pictures relating to this product can be presumed to be a daughter of the advertised sire.



3.Dam : Norval Acres Lad Darlene

Dell ST-LO DELL

0200JE01242 RESPECT x TOPEKA x SULTAN



PLI: £203 ACI: £210 JPI: 27 LPI: 1799

Sire: AHLEM KWYNN RESPECT by KWYNN
Dam: ST-LO TOPEKA DARLIA EX-92-5YR-CAN by TOPEKA
GDam: ST-LO SULTAN DARLINE VG-86-2YR-CAN 4*

AI Code: J2779	Reg. 76110644834	JH1F JNSF
UK PRODUCTION	dau: CAN G / UK 0 herds: CAN G / UK 0 Rel 57%	04/2021

Milk kg 268	Fat kg 19.2	Fat % 0.08	Protein kg 13.3	Protein % 0.05	PLI £203/56% Rel
-----------------------	-----------------------	----------------------	---------------------------	--------------------------	----------------------------

UK TYPE	dau: CAN G / UK 0 herds: CAN G / UK 0 Rel 59%	04/2021
----------------	---	---------

	Score	-2	-1	0	+1	+2
Type Merit	+1.10					
Mammary	+2.10					
Legs & Feet	+0.40					
Stature	+2.00					
Chest Width	+0.10					
Body Depth	+0.70					
Angularity	+1.60					
Rump Angle	+0.30					
Rump Width	+1.80					
Rear Leg Side	+0.30					
Foot Angle	+0.40					
Fore Udd. Att.	+2.00					
Rear Udd. Ht.	+1.90					
Udder Support	+1.40					
Udder Depth	+1.90					
Teat Length	+0.10					
Rear Teat Pl.	+0.50					
Teat Pos. Side	-					
Locomotion	+0.60					

UK MANAGEMENT			
Somatic Cell Count	-3	Maternal Calving Ease %	-
Mastitis Resistance	-	TB Advantage	-
Lifespan	21	Temperament	-
Fertility Index	-5.0	Ease of Milking	-
Direct Calving Ease %	-		

Unless stated otherwise, all female pictures relating to this product can be presumed to be a daughter of the advertised sire.



Jamie GUIMO JAMIE

0200JE01135 MATT x DYNAMIC x PARAMOUNT



PLI: £174 ACI: £207 JPI: 8 LPI: 1961

Sire: WILSONVIEW IF MATT by IRWIN
Dam: GUIMO DYNAMIC JOYCE EX-90-3E-CAN by DYNAMIC
GDam: FERMAR PARAMOUNT JOY EX-95%-8YR-USA

AI Code: J2692

Reg. 76110194407

JH1F JNSF

UK PRODUCTION dau: CAN G / UK 0 herds: CAN G / UK 0 Rel 59% 04/2021

Milk kg 143	Fat kg 14.8	Fat % 0.12	Protein kg 10.6	Protein % 0.09	PLI £174/58% Rel
-----------------------	-----------------------	----------------------	---------------------------	--------------------------	----------------------------

UK TYPE dau: CAN G / UK 0 herds: CAN G / UK 0 Rel 62% 04/2021

	Score	-2	-1	0	+1	+2
Type Merit	+1.00					
Mammary	+1.40					
Legs & Feet	+1.00					
Stature	+1.10					
Chest Width	+0.30					
Body Depth	+0.90					
Angularity	+1.50					
Rump Angle	+0.20					
Rump Width	+1.10					
Rear Leg Side	+0.20					
Foot Angle	+0.70					
Fore Udd. Att.	+1.10					
Rear Udd. Ht.	+1.50					
Udder Support	+2.40					
Udder Depth	+0.40					
Teat Length	-0.20					
Rear Teat Pl.	+2.10					
Teat Pos. Side	-					
Locomotion	+0.40					

UK MANAGEMENT

Somatic Cell Count	1	Maternal Calving Ease %	-
Mastitis Resistance	-	TB Advantage	-
Lifespan	15	Temperament	-
Fertility Index	-3.2	Ease of Milking	-
Direct Calving Ease %	-		

Unless stated otherwise, all female pictures relating to this product can be presumed to be a daughter of the advertised sire.



Jordan AUDIBEL JORDAN

0200JE01189 WESTSTAR x PREMIER x PARAMOUNT



PLI: £168 ACI: £180 JPI: 20 LPI: 1773

Sire: VERJATIN WESTSTAR by WESTSTAR
Dam: GUIMO PREMIER JADE EX-91-2E-CAN by PREMIER
GDam: FERMAR PARAMOUNT JOY EX-95%-8YR-USA

AI Code: J2700	Reg. 7613024634	JH1F JNSF
UK PRODUCTION	dau: CAN G / UK 0 herds: CAN G / UK 0 Rel 58%	04/2021

Milk kg	Fat kg	Fat %	Protein kg	Protein %	PLI
231	13.1	0.01	13.7	0.08	£168/57% Rel

UK TYPE	dau: CAN G / UK 0 herds: CAN G / UK 0 Rel 62%	04/2021
----------------	---	---------

	Score	-2	-1	0	+1	+2
Type Merit	+1.40			[Bar chart]		
Mammary	+1.90			[Bar chart]		
Legs & Feet	+1.30			[Bar chart]		
Stature	+1.90			[Bar chart]		
Chest Width	+1.30			[Bar chart]		
Body Depth	+0.90			[Bar chart]		
Angularity	+1.90			[Bar chart]		
Rump Angle	0.00			[Bar chart]		
Rump Width	+1.20			[Bar chart]		
Rear Leg Side	-1.50	[Bar chart]				
Foot Angle	+2.00			[Bar chart]		
Fore Udd. Att.	+1.40			[Bar chart]		
Rear Udd. Ht.	+2.40			[Bar chart]		
Udder Support	+0.20			[Bar chart]		
Udder Depth	+1.20			[Bar chart]		
Teat Length	+0.10			[Bar chart]		
Rear Teat Pl.	+0.20			[Bar chart]		
Teat Pos. Side	-			[Bar chart]		
Locomotion	+0.30			[Bar chart]		

UK MANAGEMENT			
Somatic Cell Count	4	Maternal Calving Ease %	-
Mastitis Resistance	-	TB Advantage	-
Lifespan	-9	Temperament	-
Fertility Index	-2.9	Ease of Milking	-
Direct Calving Ease %	-		

Unless stated otherwise, all female pictures relating to this product can be presumed to be a daughter of the advertised sire.



Bull: Guimo Judo

Judo

GUIMO JUDO

0200JE01128 NXLEVEL x PREMIER x PARAMOUNT



PLI: £157 ACI: £191 JPI: 30 LPI: 1688

Sire: DP NXLEVEL by ISAAC
Dam: GUIMO PREMIER JOANY VG-87-5YR-CAN by PREMIER
GDam: FERMAR PARAMOUNT JOY EX-95%-8YR-USA

AI Code: J2618	Reg. 76110194382	JH1F JNSF
UK PRODUCTION	dau: CAN G / UK 0 herds: CAN G / UK 0 Rel 58%	04/2021

Milk kg 229	Fat kg 12.9	Fat % 0.01	Protein kg 12.5	Protein % 0.06	PLI £157/57% Rel
-----------------------	-----------------------	----------------------	---------------------------	--------------------------	----------------------------

UK TYPE	dau: CAN G / UK 0 herds: CAN G / UK 0 Rel 62%	04/2021
----------------	---	---------

	Score	-2	-1	0	+1	+2
Type Merit	+1.00			[Bar]		
Mammary	+1.40			[Bar]		
Legs & Feet	+0.80			[Bar]		
Stature	+1.70			[Bar]		
Chest Width	-0.10			[Bar]		
Body Depth	+0.10			[Bar]		
Angularity	+1.70			[Bar]		
Rump Angle	+0.80			[Bar]		
Rump Width	+0.70			[Bar]		
Rear Leg Side	-1.40	[Bar]				
Foot Angle	+0.90			[Bar]		
Fore Udd. Att.	+0.80			[Bar]		
Rear Udd. Ht.	+2.00			[Bar]		
Udder Support	+0.70			[Bar]		
Udder Depth	+0.60			[Bar]		
Teat Length	-0.10			[Bar]		
Rear Teat Pl.	0.00					
Teat Pos. Side	-					
Locomotion	-0.30			[Bar]		

UK MANAGEMENT			
Somatic Cell Count	13	Maternal Calving Ease %	-
Mastitis Resistance	-	TB Advantage	-
Lifespan	48	Temperament	-
Fertility Index	-1.9	Ease of Milking	-
Direct Calving Ease %	-		

Unless stated otherwise, all female pictures relating to this product can be presumed to be a daughter of the advertised sire.



JX Cyrus{3} JX CROSSWIND CYRUS {3}

0200JE01130 JX AVON {2} x MAGNUM x DAVID



PLI: £234 ACI: £260 JPI: 68 LPI: 1604

Sire: JX FARIA BROTHERS AVON {2} by VISIONARY
Dam: CROSSWIND MAGNUM 5990 {4} VG-82%-3YR-USA by MAGNUM
GDam: CROSSWIND DAVID 4957 {3} VG-80%-3YR-USA

Progeny not able to be registered with the UK Jersey Cattle Society.

AI Code: J2633	Reg. 763134421684	JH1F JNSF
UK PRODUCTION	dau: CAN 122 / UK 0 herds: CAN 12 / UK 0 Rel 73%	04/2021

Milk kg	Fat kg	Fat %	Protein kg	Protein %	PLI
275	12.9	-0.03	14.2	0.06	£234/67% Rel

UK TYPE	dau: CAN G / UK 0 herds: CAN G / UK 0 Rel 62%	04/2021
----------------	---	---------

	Score	-2	-1	0	+1	+2
Type Merit	+0.60			█		
Mammary	+1.00			██		
Legs & Feet	+0.40			█		
Stature	+0.90			██		
Chest Width	+1.60			████		
Body Depth	+1.70			█████		
Angularity	+0.90			██		
Rump Angle	+0.90			██		
Rump Width	+0.10			█		
Rear Leg Side	-0.60		█			
Foot Angle	+0.80			██		
Fore Udd. Att.	+1.50			████		
Rear Udd. Ht.	+1.20			████		
Udder Support	+1.50			████		
Udder Depth	+0.70			██		
Teat Length	+0.70			██		
Rear Teat Pl.	-0.10			█		
Teat Pos. Side	-					
Locomotion	+0.20			█		

UK MANAGEMENT			
Somatic Cell Count	-2	Maternal Calving Ease %	-
Mastitis Resistance	-	TB Advantage	-
Lifespan	85	Temperament	-
Fertility Index	-2.1	Ease of Milking	-
Direct Calving Ease %	-		

Unless stated otherwise, all female pictures relating to this product can be presumed to be a daughter of the advertised sire.

Bull: JX Pine-Tree History



JX History{4} JX PINE-TREE HISTORY {4}

0200JE01204 JODECI {3} x JX MARLO {2} x HARRIS



PLI: £267 ACI: £289 JPI: 79 LPI: 1597

Sire: JX FARIA BROTHERS JODECI {3} by TYRION
Dam: JX FARIA BROTHERS MARLO CHAPEL HILL {3} VG-85%-3YR-USA by JX MARLO {2}
GDam: JX FARIA BROTHERS HARRIS JUVENTUS {5} VG-87%-4YR-USA

Progeny not able to be registered with the UK Jersey Cattle Society.

AI Code: J2742

Reg. 7667771743

JH1F JNSF

UK PRODUCTION dau: CAN G / UK 0 herds: CAN G / UK 0 Rel 58% 04/2021

Milk kg 394	Fat kg 17.6	Fat % -0.06	Protein kg 17.5	Protein % 0.04	PLI £267/57% Rel
-----------------------	-----------------------	-----------------------	---------------------------	--------------------------	----------------------------

UK TYPE dau: CAN G / UK 0 herds: CAN G / UK 0 Rel 62% 04/2021

	Score	-2	-1	0	+1	+2
Type Merit	0.00					
Mammary	+0.10			■		
Legs & Feet	+0.10			■		
Stature	+0.20			■		
Chest Width	-0.10			■		
Body Depth	0.00					
Angularity	+1.20			■	■	■
Rump Angle	+0.30			■		
Rump Width	-0.30			■		
Rear Leg Side	+0.20			■		
Foot Angle	+0.40			■		
Fore Udd. Att.	-0.20			■		
Rear Udd. Ht.	+0.60			■	■	
Udder Support	+1.40			■	■	■
Udder Depth	+0.20			■		
Teat Length	+0.10			■		
Rear Teat Pl.	-0.10			■		
Teat Pos. Side	-					
Locomotion	-0.10			■		

UK MANAGEMENT

Somatic Cell Count	4	Maternal Calving Ease %	-
Mastitis Resistance	-	TB Advantage	-
Lifespan	54	Temperament	-
Fertility Index	-2.3	Ease of Milking	-
Direct Calving Ease %	-		

Unless stated otherwise, all female pictures relating to this product can be presumed to be a daughter of the advertised sire.



JX Jenius{5} JX SUN VALLEY JENIUS {5}

0200JE01164 WORLD CUP {4} x DIMENSION x TBONE



PLI: £323 ACI: £330 JPI: 66 LPI: 1650

Sire: JX CO-OP AD WORLD CUP {4} by CHILI
Dam: SUN VALLEY DIMENSION JERSEE EX-90%-3YR-USA by DIMENSION
GDam: SUN VALLEY TBONE JERSEE VG-88%-4YR-USA

Progeny not able to be registered with the UK Jersey Cattle Society.

AI Code: J2707	Reg. 76172636645	JH1F JNSF
-----------------------	------------------	-----------

UK PRODUCTION	dau: CAN G / UK 0	herds: CAN G / UK 0	Rel 59%	04/2021
----------------------	-------------------	---------------------	---------	---------

Milk kg	Fat kg	Fat %	Protein kg	Protein %	PLI
253	23.4	0.16	18.6	0.15	£323/58% Rel

UK TYPE	dau: CAN G / UK 0	herds: CAN G / UK 0	Rel 62%	04/2021
----------------	-------------------	---------------------	---------	---------

	Score	-2	-1	0	+1	+2
Type Merit	+0.10					
Mammary	+0.20					
Legs & Feet	+0.40					
Stature	+2.00					
Chest Width	+1.20					
Body Depth	+1.40					
Angularity	+0.80					
Rump Angle	-0.60					
Rump Width	+1.80					
Rear Leg Side	+0.20					
Foot Angle	+1.20					
Fore Udd. Att.	+0.80					
Rear Udd. Ht.	0.00					
Udder Support	+1.40					
Udder Depth	-0.30					
Teat Length	+0.90					
Rear Teat Pl.	+1.40					
Teat Pos. Side	-					
Locomotion	-0.60					

UK MANAGEMENT			
Somatic Cell Count	-2	Maternal Calving Ease %	-
Mastitis Resistance	-	TB Advantage	-
Lifespan	39	Temperament	-
Fertility Index	-0.9	Ease of Milking	-
Direct Calving Ease %	-		

Unless stated otherwise, all female pictures relating to this product can be presumed to be a daughter of the advertised sire.



Bull: JX Wilsonview Skyman

JX Skyman{6} JX WILSONVIEW SKYMAN {6}

0200JE01184 VICEROY x HILARIO x LEGAL



PLI: £222 ACI: £243 JPI: 87 LPI: 1657

Sire: CDF VICEROY by DOMINICAN
Dam: JX WILSONVIEW HI SKY {5} EX-90%-3YR-USA by HILARIO
GDam: JX WILSONVIEW LEGAL SASHA {4} EX-91%-4YR-USA

Progeny not able to be registered with the UK Jersey Cattle Society.

AI Code: J2689		Reg. 76173275032		JH1F JNSF	
UK PRODUCTION		dau: CAN G / UK 0	herds: CAN G / UK 0	Rel 60%	04/2021

Milk kg	Fat kg	Fat %	Protein kg	Protein %	PLI
309	23.7	0.12	14.5	0.04	£222/58% Rel

UK TYPE	dau: CAN G / UK 0	herds: CAN G / UK 0	Rel 62%	04/2021
----------------	-------------------	---------------------	---------	---------

	Score	-2	-1	0	+1	+2
Type Merit	+0.20			█		
Mammary	+0.90			█████		
Legs & Feet	+0.10			█		
Stature	+1.70			██████████		
Chest Width	+1.00			██████		
Body Depth	+1.40			███████		
Angularity	+2.00			██████████	▶	
Rump Angle	+0.40			██		
Rump Width	+2.00			██████████	▶	
Rear Leg Side	+1.40			███████		
Foot Angle	+0.80			██████		
Fore Udd. Att.	+0.70			██████		
Rear Udd. Ht.	+1.40			███████		
Udder Support	+1.10			███████		
Udder Depth	-0.30			█		
Teat Length	+0.20			█		
Rear Teat Pl.	+1.20			███████		
Teat Pos. Side	-					
Locomotion	-0.20			█		

UK MANAGEMENT			
Somatic Cell Count	5	Maternal Calving Ease %	-
Mastitis Resistance	-	TB Advantage	-
Lifespan	27	Temperament	-
Fertility Index	-2.6	Ease of Milking	-
Direct Calving Ease %	-		

Unless stated otherwise, all female pictures relating to this product can be presumed to be a daughter of the advertised sire.



Maker RIVER VALLEY MAKER

0200JE10018 LEMONHEAD x MACHETE x RENEGADE



PLI: £359 ACI: £345 JPI: 59 LPI: 1695

Sire: STEINHAUERS SAMSON LEMONHEAD by SAMSON
Dam: SC/RV MACHETE MAID 301 VG-83%-3YR-USA by MACHETE
GDam: SUNSET CANYON RENEGADE C MAID VG-88%-3YR-USA

AI Code: J2749

Reg. 763133234491

JH1F JNSF

UK PRODUCTION dau: CAN G / UK 0 herds: CAN G / UK 0 Rel 60% 04/2021

Milk kg 439	Fat kg 25.0	Fat % 0.02	Protein kg 20.0	Protein % 0.05	PLI £359/59% Rel
-----------------------	-----------------------	----------------------	---------------------------	--------------------------	----------------------------

UK TYPE dau: CAN G / UK 0 herds: CAN G / UK 0 Rel 62% 04/2021

	Score	-2	-1	0	+1	+2
Type Merit	+0.60			█		
Mammary	+0.90			█		
Legs & Feet	+0.30			█		
Stature	+1.10			█		
Chest Width	-1.00		█			
Body Depth	-0.90		█			
Angularity	+1.40			█		
Rump Angle	+1.00			█		
Rump Width	+0.60			█		
Rear Leg Side	+0.90			█		
Foot Angle	+0.50			█		
Fore Udd. Att.	-0.10			█		
Rear Udd. Ht.	+1.40			█		
Udder Support	+0.90			█		
Udder Depth	-0.10			█		
Teat Length	+1.50			█		
Rear Teat Pl.	+0.60			█		
Teat Pos. Side	-					
Locomotion	+0.10			█		

UK MANAGEMENT

Somatic Cell Count	-4	Maternal Calving Ease %	-
Mastitis Resistance	-	TB Advantage	-
Lifespan	30	Temperament	-
Fertility Index	-1.3	Ease of Milking	-
Direct Calving Ease %	-		

Unless stated otherwise, all female pictures relating to this product can be presumed to be a daughter of the advertised sire.



Video ST-LO VIDEO

0200JE01167 VIRAL x TOPEKA



PLI: £158 ACI: £181 JPI: -13 LPI: 1761

Sire: Bushlea Pn Viral by PREMIER
 Dam: St-Lo Tepeka Darli by Topeka
 GDam: St-Lo Sultan Darline

AI Code: J2652

Reg. 76110644826 JH1F JNSF

UK PRODUCTION dau: CAN G / UK 0 herds: CAN G / UK 0 Rel 60% 04/2021

Milk kg 186	Fat kg 16.6	Fat % 0.11	Protein kg 12.0	Protein % 0.08	PLI £158/57% Rel
----------------	----------------	---------------	--------------------	-------------------	---------------------

UK TYPE dau: CAN G / UK 0 herds: CAN G / UK 0 Rel 61% 04/2021

	Score	-2	-1	0	+1	+2
Type Merit	+1.20				██████████	
Mammary	+1.60				██████████	
Legs & Feet	+1.40				██████████	
Stature	+1.40				██████████	
Chest Width	+0.50				██████	
Body Depth	+1.20				██████████	
Angularity	+2.10				██████████	▶
Rump Angle	-0.40			██████		
Rump Width	+1.80				██████████	
Rear Leg Side	-1.70	██████████				
Foot Angle	+1.40				██████████	
Fore Udd. Att.	+2.00				██████████	▶
Rear Udd. Ht.	+2.10				██████████	▶
Udder Support	+0.70				██████	
Udder Depth	+0.80				██████	
Teat Length	+0.10			██		
Rear Teat Pl.	+1.20				██████████	
Teat Pos. Side	-					
Locomotion	+0.20			██		

UK MANAGEMENT

Somatic Cell Count	11	Maternal Calving Ease %	-
Mastitis Resistance	-	TB Advantage	-
Lifespan	-18	Temperament	-
Fertility Index	-3.1	Ease of Milking	-
Direct Calving Ease %	-		

Unless stated otherwise, all female pictures relating to this product can be presumed to be a daughter of the advertised sire.



Dau: MishRo VIP Shabbat Shalon

VIP RIVER VALLEY VENUS V I P

0200JE10003 COLTON x MINISTER x SPARKLER



RIVER VALLEY

SHOWTIME

SEMEXX

PLI: £-200

ACI: £-42

JPI: -127

LPI: 1381

Sire: CHILLI ACTION COLTON by ACTION

Dam: TJ CLASSIC MINISTER VENUS EX-95%-8YR-USA by MINISTER

GDam: STEPHAN SPARKLER VERA EX-95%-9YR-USA

AI Code: J2600

Reg. 763126479167

JH1F JNSF

UK PRODUCTION

dau: CAN 64 / UK 0 herds: CAN 45 / UK 0 Rel 78%

04/2021

Milk kg
-263

Fat kg
-14.8

Fat %
-0.01

Protein kg
-9.5

Protein %
0.01

PLI
£-200/77% Rel

UK TYPE

dau: CAN 50 / UK 0 herds: CAN 33 / UK 0 Rel 89%

04/2021

	Score	-2	-1	0	+1	+2
Type Merit	+1.60					
Mammary	+2.50					
Legs & Feet	+1.20					
Stature	+2.00					
Chest Width	-0.30					
Body Depth	+0.80					
Angularity	+1.40					
Rump Angle	-1.60					
Rump Width	+1.60					
Rear Leg Side	+0.60					
Foot Angle	+1.60					
Fore Udd. Att.	+2.90					
Rear Udd. Ht.	+2.30					
Udder Support	+2.50					
Udder Depth	+3.50					
Teat Length	+0.90					
Rear Teat Pl.	-0.80					
Teat Pos. Side	-					
Locomotion	+0.30					

UK MANAGEMENT

Somatic Cell Count	7	Maternal Calving Ease %	-
Mastitis Resistance	-	TB Advantage	-
Lifespan	73	Temperament	-
Fertility Index	1.6	Ease of Milking	-
Direct Calving Ease %	-		

Unless stated otherwise, all female pictures relating to this product can be presumed to be a daughter of the advertised sire.

Bull : Unique Webcam



Webcam UNIQUE WEBCAM

0200JE01212 WILDCAT x MATT x GOVERNOR



PLI: £90

ACI: £138

JPI: 13

LPI: 1868

Sire: AHLEM TEXAS WILDCAT 22702 by TEXAS

Dam: REDHOT MATT SKYLINE VG-87-2YR-CAN by MATT

GDam: RJF UNIQUE GOVERNOR MERCEDES EX-92-3E-CAN 7*

AI Code: J2782

Reg. 7613050925

JH1F JNSF

UK PRODUCTION

dau: CAN G / UK 0 herds: CAN G / UK 0 Rel 59%

04/2021

Milk kg	Fat kg	Fat %	Protein kg	Protein %	PLI
265	7.7	-0.11	9.7	-0.01	£90/57% Rel

UK TYPE

dau: CAN G / UK 0 herds: CAN G / UK 0 Rel 62%

04/2021

	Score	-2	-1	0	+1	+2
Type Merit	+1.00			[Bar chart showing score +1.00]		
Mammary	+1.10			[Bar chart showing score +1.10]		
Legs & Feet	+0.90			[Bar chart showing score +0.90]		
Stature	+1.90			[Bar chart showing score +1.90]		
Chest Width	+0.90			[Bar chart showing score +0.90]		
Body Depth	+0.70			[Bar chart showing score +0.70]		
Angularity	+0.70			[Bar chart showing score +0.70]		
Rump Angle	+0.50			[Bar chart showing score +0.50]		
Rump Width	+1.20			[Bar chart showing score +1.20]		
Rear Leg Side	-0.70		[Bar chart showing score -0.70]			
Foot Angle	+0.70			[Bar chart showing score +0.70]		
Fore Udd. Att.	+1.20			[Bar chart showing score +1.20]		
Rear Udd. Ht.	+0.90			[Bar chart showing score +0.90]		
Udder Support	+1.90			[Bar chart showing score +1.90]		
Udder Depth	+1.00			[Bar chart showing score +1.00]		
Teat Length	+0.70			[Bar chart showing score +0.70]		
Rear Teat Pl.	+1.60			[Bar chart showing score +1.60]		
Teat Pos. Side	-			[Bar chart showing score -]		
Locomotion	+0.50			[Bar chart showing score +0.50]		

UK MANAGEMENT

Somatic Cell Count	2	Maternal Calving Ease %	-
Mastitis Resistance	-	TB Advantage	-
Lifespan	30	Temperament	-
Fertility Index	-1.6	Ease of Milking	-
Direct Calving Ease %	-		

Unless stated otherwise, all female pictures relating to this product can be presumed to be a daughter of the advertised sire.

JERSEY CANADIAN CONFORMATION - APRIL 2021

SHORT NAME	Sexed	LPI	Conf Rel %	Conf.	Mamm.	F & L	DS	Udder Depth	Udder Texture	Median Suspensory	Fore Udd Att	Front Teat Placement	Rear Att. Ht.	Rear Att. Width	Rear Teat Placement	Teat Length	Foot Angle	Heel Depth	Bone Quality	Rear Leg Side View	Rear Leg Rear View	Stature	Height Front End	Chest Width	Body Depth	Loin Strength	Rump Angle	Pin Width	Thurl Placement	Herd Life	Dtr Fertility	Milk-ing Speed	Mil-king Tmpt	Calving Ability	Kappa Casein	Beta Casein	Haplotype
CASPIAN		2011	52	8	8	3	6	1D	-2	3	7	2W	12	5	2W	2L	8	1	0	4S	1	3T	-2	0	1	3	1L	3	+6A	99	97	100	105	95	BB	A2A2	JH1F JNSF
CHOCOCHIP		1537	57	14	11	12	10	6S	9	7	11	1C	6	2	2C	6L	10	11	4	1C	9	10T	9	6	4	6	3H	3	-3B	106	106	97	101	97	BB	A2A2	JH1F JNSF
CRAZE	Y	1645	81	3	7	1	-5	9S	7	9	-1	2C	1	0	7C	14L	5	3	1	2S	1	2T	-5	-4	-7	-8	3H	3	-5B	104	100	108	109	100	BB	A2A2	JH1F JNSF
DELL	Y	1799	51	11	12	1	8	8S	6	4	10	3C	10	6	1C	1L	-1	0	1	3C	2	7T	3	4	5	1	2H	6	+1A	102	97	103	99	100	BB	A2A2	JH1F JNSF
JAMIE		1961	60	10	8	10	6	1S	9	7	5	10C	4	5	6C	4S	9	5	4	4C	8	2T	0	6	4	-2	2H	8	-2B	105	101	104	101	104	BB	A2A2	JH1F JNSF
JORDAN	Y	1773	57	9	6	6	10	3S	4	2	4	1W	8	3	4W	0	8	4	1	2S	6	9T	4	7	0	6	1H	4	-2B	103	103	97	103	92	BB	A2A2	JH1F JNSF
JUDO		1688	60	8	8	3	5	4S	6	7	5	3C	10	1	4C	4S	9	2	3	4S	1	5T	0	-1	-3	3	3L	2	+6A	105	102	99	102	91	AB	A2A2	JH1F JNSF
JX CYRUS{3}		1604	51	1	4	-9	1	2S	-3	5	6	2W	0	-1	3C	3L	-1	-16	-9	1S	-2	0	-3	6	6	-9	3L	-3	+1A	106	104	102	99	103	BB	A2A2	JH1F JNSF
JX HISTORY{4}	Y	1597	48	-2	0	-6	-1	3S	-5	4	0	0	3	-5	2C	1S	-1	-11	-5	4C	-5	2S	-6	0	2	-6	1H	-5	+2A	106	101	102	99	100	BB	A2A2	JH1F JNSF
JX JENIUS{5}	Y	1650	57	-3	-3	-9	3	4D	-7	2	2	7C	-5	-3	6C	2L	1	-10	-4	4C	-8	6T	-2	4	2	0	3H	5	+2A	101	105	100	100	97	BB	A2A2	JH1F JNSF
JX SKYMAN{6}	Y	1657	51	1	1	-5	6	3D	-2	5	2	6C	5	-3	7C	0	1	-5	-1	8C	-8	8T	-5	5	5	-2	2L	6	+2A	102	102	100	100	102	AB	A2A2	JH1F JNSF
MAKER		1695	55	0	0	-1	0	2D	-2	0	0	4C	1	-2	5C	8L	2	-1	5	3C	-4	4T	-5	-2	-4	-1	3L	2	+3A	99	101	101	104	92	BB	A2A2	JH1F JNSF
VIDEO	Y	1761	60	12	10	7	11	4S	2	3	9	7C	10	4	6C	1L	5	3	2	3S	9	4T	3	3	7	6	4H	8	-4B	101	95	103	102	98	BB	A2A2	JH1F JNSF
VIP	Y	1381	79	14	11	16	9	11S	15	8	11	7W	4	0	1C	5L	11	12	6	6S	10	8T	7	5	4	3	6H	5	4B	107	103	101	98	99	BB	A1A2	JH1F JNSF
WEBCAM	Y	1868	58	13	11	9	10	4S	12	8	8	9C	7	4	6C	3L	6	6	3	4S	13	8T	6	7	1	3	2H	4	-1B	104	103	104	104	103	BB	A1A2	JH1F JNSF

SALES CONTACTS

National Sales Manager: Michael Dennison
Tel: 07713 245220 Email: mdennison@semex.com

NAME	AREA	TEL
South		
Phil Macpherson	Hants, Wiltshire, West Sussex, Somerset	07827 018823
Andrew Axford	Cornwall	07771 684294
Felicity Coates	Dorset, South and East Somerset	07912 498543
Michael Elce	Isle of Wight, Hants, North Somerset	07831 542027
David Hawkins	Mid & South Devon	07841 486628
Mike Huskins	East Devon and West Dorset	07909 545426
Steve Lee	North & West Devon, North Cornwall	07795 311688
Mark Pickford	Wiltshire, Berks, Glos, Bucks, Hants, Oxfordshire, Northants	07928 461264
Jeff Trunkfield	East/West Sussex, Kent, Surrey	07977 586172

Midlands and Wales

Rodger Mather	East Midlands and South East Staffs	07719 708795
David Gadd	Clwyd, Powys, part Shropshire, Gwynedd and Anglesey	07970 111834
Fearghal Gallagher	part Cheshire, North Derbys, North Wales, part Staffs	07990 535613
Tony Hack	Cardigan and Pembrokeshire	07765 222972
Rhys Jones	Dyfed	07902 278252
Sally Lloyd	Herefordshire, Gwent	07805 626155
Richard Mallett	South Shrops, Hereford and Worcester, part Staffs	07825 046446
Idris Morgan	Carmarthen	07783 578848
Iwan Morgan	Carmarthen	07704 605616
Kevin Naughton	North Shropshire, South Cheshire	07956 492499
Richard Thomas	Carmarthenshire and Pembrokeshire	07813 555978
Will Tucker	South and South East Wales	07915 881466
Michelle Fletcher	Midlands and Wales	07890 326121

North and Scotland

Brian Brumby	Isle of Man	07624 453625
Tom Callan	Ayrshire, Dumfries & Galloway, Kintyre	07786 631059
Richard Green	Yorkshire, Norfolk, Suffolk, Bedfordshire, part Derbyshire	07761 454359
Frances Griffiths	part Lancs, Cheshire, Derbyshire & Yorks	07956 568535
Robert Hunter	Lanarkshire, Lothian, Fife, Borders	07774 134787
Alan Kennedy	Bute	07712 526443
Graham Kirby	Lancashire	07715 478622
George McConnell	North Ayrshire, Renfrewshire	07949 310147
Stephen Moar	North East Scotland	07767 806593
John Montgomery	Central Scotland	07778 478341
Ian Plews	North Cumbria and South-West Scotland	07926 88 029
Sammy Sugden	Craven	07749 108330
Adam Worsdale	North Yorkshire, Tyne and Wear, Durham	07866 739432

Northern Ireland

John Berry	Armagh, Fermanagh, Sth Down, Sth Tyrone	07968 623477
Steven Brown	part Mid Ulster	07713 084003
Claire Hunter	South Antrim	07841 416313
William Hunter	West Tyrone, Londonderry	07740 531051
Andrew Kennedy	Ballymena, Larne	07762 168039
William Kerr	part Antrim	07956 451000
Robin Lamb	North Down	07745 289428
Clive Noble	Co. Tyrone, Co. Londonderry	07821 378639
Shay O'Neill	East Tyrone, North Antrim	07519 49 527
Robert Stewart	North Down	07513 468813
James Wilson	Part Armagh/Down	07749 603224



SEMEX[®]

Genetics for Life[®]

Semex UK, Maple Park, Monkton, Prestwick, Ayrshire KA9 2RJ
0800 86 88 90 info@semex.co.uk

Immunity+, Genomax, Semexx, Robot Ready, Grazing Pro, SemexWorks, Optimate, Dairy Track, Calving Ease, Fertility First and Semex aI24 are all registered trademarks of Semex. Sexed semen is subject to availability. Please contact us for the latest information. Published September 2020. E&OE. Semex UK abide by the AHDB Dairy and Holstein UK established Code of Advertising.