



PICSTON SHOTTLE  
 REGANCREST STORMATIC LYN VG-85-2YR-USA GMD DOM  
 COMESTAR STORMATIC  
 REGANCREST-PR BARBIE EX-92-7YR-USA GMD DOM 6\*  
 REGANCREST ELTON DURHAM  
 REGANCREST JUROR BRINA EX-92-4YR-USA GMD

GLPI +2003 PRO\$ -1317

VG-CAN EXTRA DPF BLF CNF XIF BYF CVF HH1F HH2F HH3F HH4F HH5F HH6F HCDF HMWF

Reg. #: HOUSAM61898369 aAa: 324156 DMS: 234,345  
 Born: 09/03/2005 Kappa Casein: AE Beta Casein: A1A2

**PRODUCTION** 775 Herds 1218 Daughters 99% Rel GEBV 26\*APR

Milk kg	Fat kg	Fat %	Protein kg	Protein %
748	-59	-0.72	-4	-0.23
Milking Speed	Milking Temperament	Methane Efficiency	Feed Efficiency	BMR
99	94	94	103	95

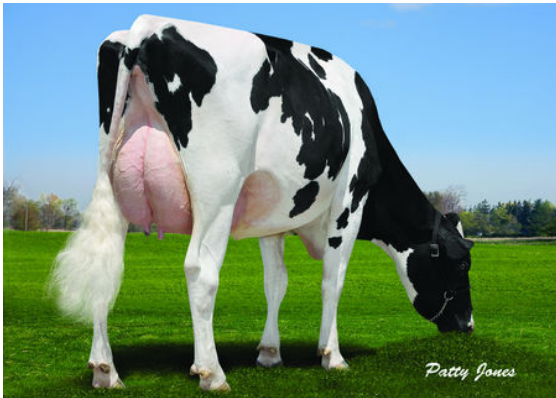
Daughter Average (ME) Milk 11,958 kg Fat 427 kg Protein 369 kg

**HEALTH & REPRODUCTION** Immunity 91

Herd Life	90	Calf Immunity	101
Somatic Cell Score	95	Calving Ability	87
Daughter Fertility	92	Daughter Calving Ability	95
Body Condition Score	104	Metabolic Disease Resistance	91
Mastitis Resistance	92	Calf Health	102
Lactation Persistence	104		

**CONFORMATION** 668 Herds 1071 Daughters 98% Rel GEBV 26\*APR

Conformation	-4	Dairy Strength	2
Mammary System	-7	Rump	4
Feet & Legs	-1	GP or Better %	59



SHADY LANE LONGTIME IRISHA



BARVEL LONGTIME ABBIE