



PROGENESIS PYRAMID
 WESTCOAST ALCOVE RIZA 7512 EX-92-5YR-CAN 3*
 WESTCOAST ALCOVE
 WESTCOAST MONTANA RIZA 4700 VG-87-4YR-CAN 6*
 IHG MONTANA
 WESTCOAST SUPERSHOT RIZA 2951 GP-80-2YR-CAN 1*

GLPI +3359 PRO\$ 2027

DPF RDF BLF CNF XIF BYF MWF CVF HH1F HH2F HH3F HH4F HH5F HH6F HCDF HMWF

Reg. #: HOCANM13442745 aAa: 435261 DMS:
 Born: 11/16/2019 Kappa Casein: AB Beta Casein: A2A2

PRODUCTION 362 Herds 870 Daughters 98% Rel GEBV 26*APR

Milk kg	Fat kg	Fat %	Protein kg	Protein %
130	71	+0.55	44	+0.30
Milking Speed	Milking Temperament	Methane Efficiency	Feed Efficiency	BMR
96	102	108	104	90

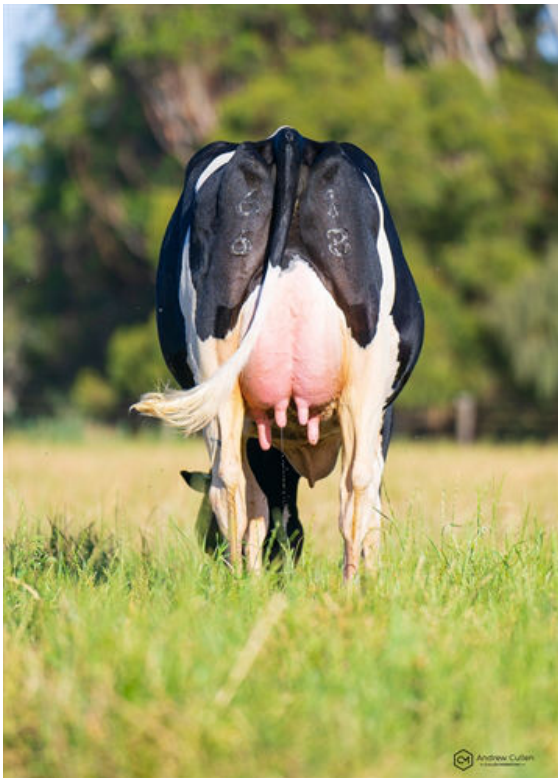
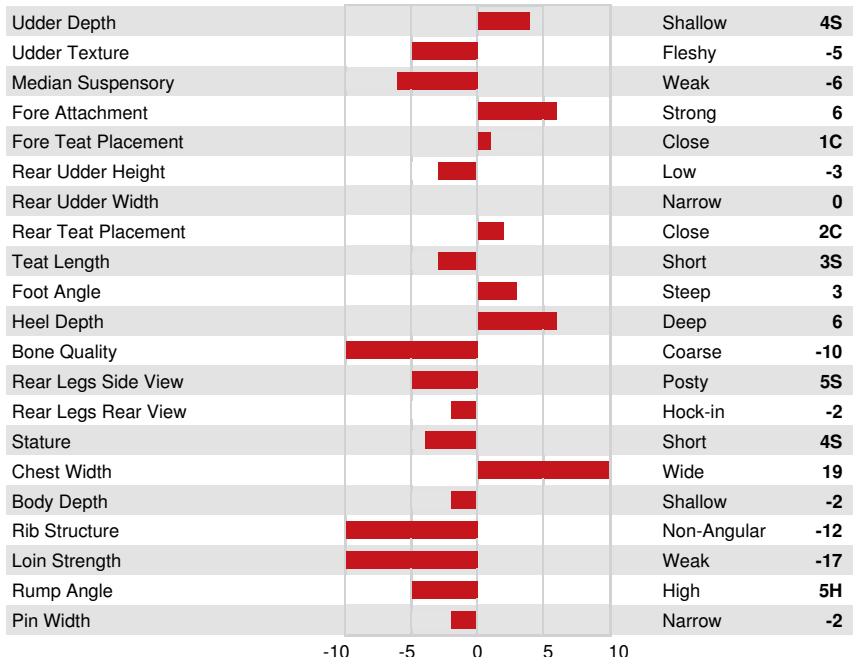
Daughter Average (ME) Milk 12,912 kg Fat 568 kg Protein 444 kg

HEALTH & REPRODUCTION Immunity 101

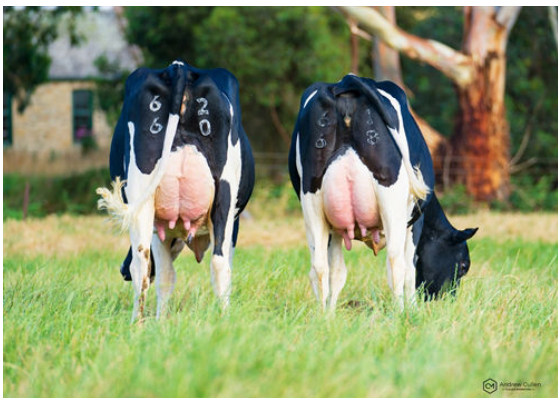
Herd Life	105	Calf Immunity	95
Somatic Cell Score	99	Calving Ability	100
Daughter Fertility	107	Daughter Calving Ability	98
Body Condition Score	120	Metabolic Disease Resistance	111
Mastitis Resistance	103	Calf Health	103
Lactation Persistence	110		

CONFORMATION 361 Herds 871 Daughters 97% Rel GEBV 26*APR

Conformation	-1	Dairy Strength	-2
Mammary System	1	Rump	-10
Feet & Legs	0	GP or Better %	56



ROCKWELLA FARM ROCKNROLL DEANNE DAUGHTER



ROCKNROLL DAUGHTER GROUP

L TO R - ROCKWELLA FARM ROCKNROLL DIXIE, ROCKWELLA FARM ROCKNROLL DEANNE