



PICSTON SHOTTLE
 REGANCREST STORMATIC LYN VG-85-2YR-USA GMD DOM
 COMESTAR STORMATIC
 REGANCREST-PR BARBIE EX-92-7YR-USA GMD DOM 6*
 REGANCREST ELTON DURHAM
 REGANCREST JUROR BRINA EX-92-4YR-USA GMD

GTPI 1600

VG-CAN EXTRA TD TL XIF TY TV HH1F HH2F HH3F HH4F HH5F HH6F HCDF HMWF

Reg. #: HOUSAM61898369 aAa: 324156 DMS: 234,345
 Born: 09/03/2005 Kappa Casein: AE Beta Casein: A1A2

PRODUCTION 4091 Herds 11726 Dtrs 99% Rel MACE-G / 04-26

Milk lbs 112	Fat lbs -77	Fat % -0.31	Protein lbs -23	Protein % -0.10
NM\$ -959	CM\$ -1001	FM\$ -863	GM\$ -995	DWP\$
Feed Efficiency -235	RFI 163	Feed Saved -398	Methane Efficiency 94	Milking Speed 7.00

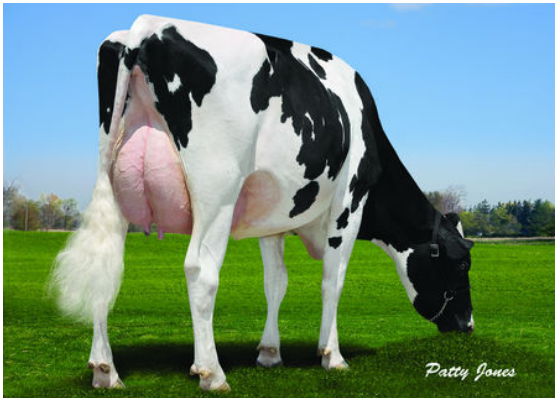
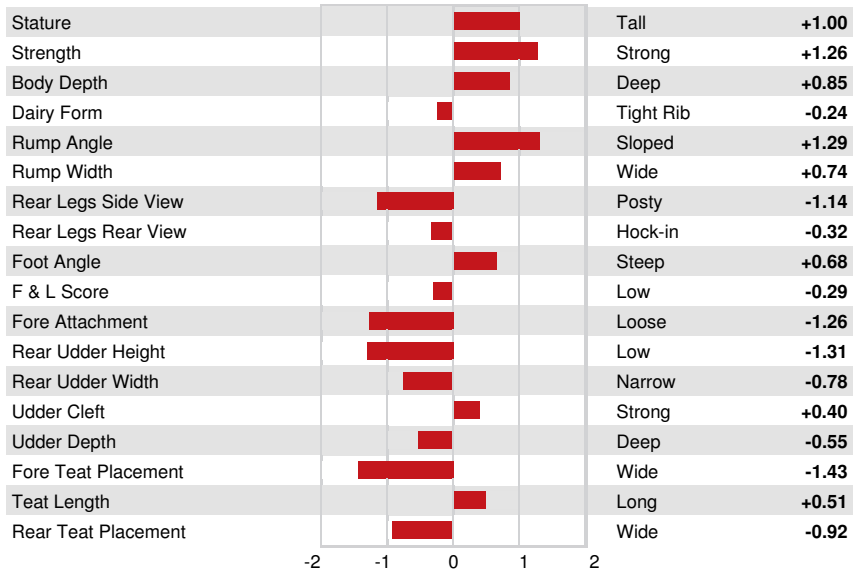
Daughter Average (ME) Milk **25,738 lbs** Fat **907 lbs** Protein **795 lbs**

HEALTH & REPRODUCTION Immunity **91**

Productive Life	-5.1	Calf Immunity	101
Somatic Cell Score	3.26	Cow Conception Rate	-4.0
Daughter Pregnancy Rate	-2.5	Heifer Conception Rate	-3.4
Livability	-5.6	Sire Calving Ease	2.3% 98% Rel
Heifer Livability	0.6	Daughter Calving Ease	2.7% 95% Rel
Fertility Index	-3.5	Sire Stillbirth	5.3%
		Daughter Stillbirth	6.1%

CONFORMATION 2545 Herds 6493 Dtrs 97% Rel MACE / 04-26

PTAT	-0.37	Body Composite	1.44
Udder Composite	-1.23	Dairy Composite	-0.02
Feet & Legs Composite	-0.53		



SHADY LANE LONGTIME IRISHA



BARVEL LONGTIME ABBIE