



CALVING EASE

ENDCO SUPERHERO  
 SANDY-VALLEY COKISNCREAM EX-93-5YR-USA DOM  
 SEAGULL-BAY SILVER  
 SANDY-VALLEY CARROTCAKE EX-90-3YR-USA DOM  
 SEAGULL-BAY SUPERSIRE  
 LARCREST CAKE VG-87-3YR-USA DOM

**GTPI 2858**

VG-CAN TD TR TL TY MWC TV 99%-I HH1F HH2F HH3F HH4F HH5F HH6F HCDF HMWC

Reg. #: HO840M3140616169 aAa: 426315 DMS: 246  
 Born: 01/02/2017 Kappa Casein: BE Beta Casein: A1A2

**PRODUCTION** 1434 Herds 7844 Dtrs 99% Rel MACE-G / 04-26

Milk lbs <b>194</b>	Fat lbs <b>43</b>	Fat % <b>+0.13</b>	Protein lbs <b>11</b>	Protein % <b>+0.02</b>
NM\$ <b>303</b>	CM\$ <b>316</b>	FM\$ <b>278</b>	GM\$ <b>317</b>	DWP\$ <b>396</b>
Feed Efficiency <b>87</b>	RFI <b>155</b>	Feed Saved <b>-94</b>	Methane Efficiency <b>102</b>	Milking Speed <b>7.12</b>

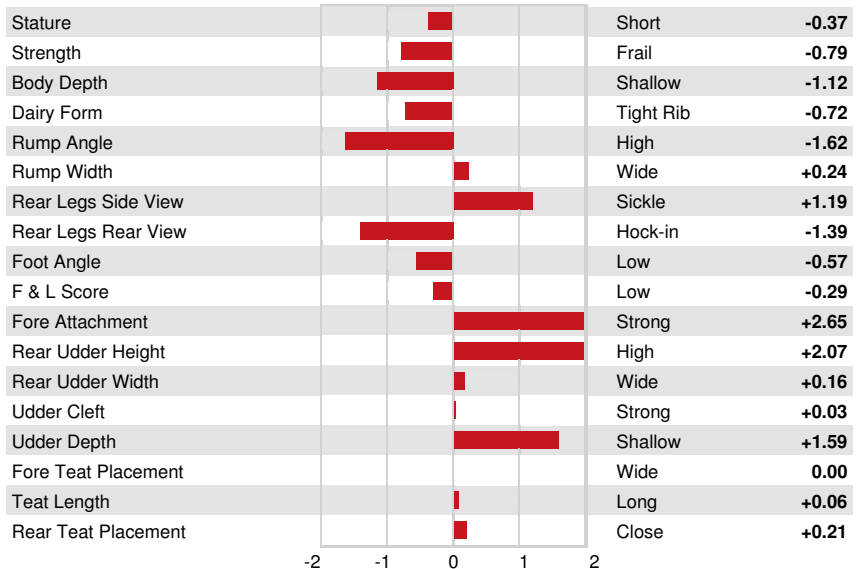
Daughter Average (ME) Milk **26,764 lbs** Fat **1,141 lbs** Protein **885 lbs**

**HEALTH & REPRODUCTION** Immunity **101**

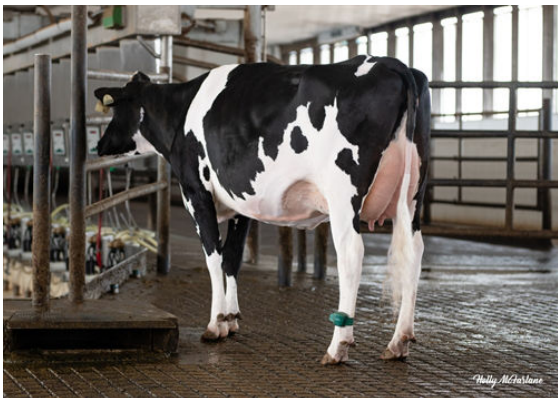
Productive Life	<b>1.8</b>	Calf Immunity	<b>94</b>
Somatic Cell Score	<b>2.75</b>	Cow Conception Rate	<b>1.5</b>
Daughter Pregnancy Rate	<b>1.7</b>	Heifer Conception Rate	<b>-3.0</b>
Livability	<b>-1.2</b>	Sire Calving Ease	<b>1.5%</b> 98% Rel
Heifer Livability	<b>-0.7</b>	Daughter Calving Ease	<b>2.0%</b> 97% Rel
Fertility Index	<b>0.9</b>	Sire Stillbirth	<b>4.5%</b>
		Daughter Stillbirth	<b>4.8%</b>

**CONFORMATION** 777 Herds 3589 Dtrs 99% Rel MACE / 04-26

PTAT	<b>0.71</b>	Body Composite	<b>-0.36</b>
Udder Composite	<b>1.55</b>	Dairy Composite	<b>-1.61</b>
Feet & Legs Composite	<b>-0.53</b>		



CHALLENGER DAUGHTER GROUP  
 DAUGHTERS AT SANDY-VALLEY



STANTONS CHALLENGER CHEERIO



PROGENESIS CHALLENGER EMBRACE