



PROGENESIS PYRAMID  
 WESTCOAST ALCOVE RIZA 7512 EX-92-5YR-CAN 3\*  
 WESTCOAST ALCOVE  
 WESTCOAST MONTANA RIZA 4700 VG-87-4YR-CAN 6\*  
 IHG MONTANA  
 WESTCOAST SUPERSHOT RIZA 2951 GP-80-2YR-CAN 1\*

**GTPI 2957**

TD TR TL XIF TY MWT TV 99%-I HH1F HH2F HH3F HH4F HH5F HH6F HCDF HMWF

Reg. #: HOCANM13442745 aAa: 435261 DMS:  
 Born: 11/16/2019 Kappa Casein: AB Beta Casein: A2A2

**PRODUCTION** 570 Herds 1919 Dtrs 92% Rel MACE-G / 04-26

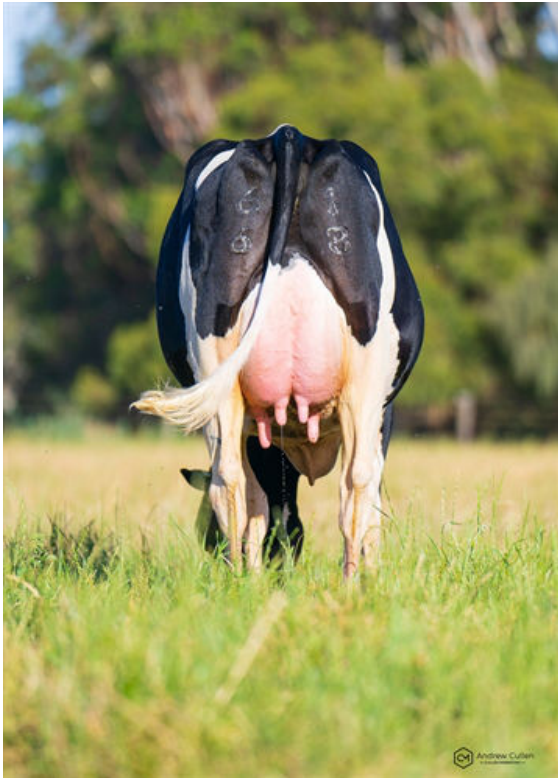
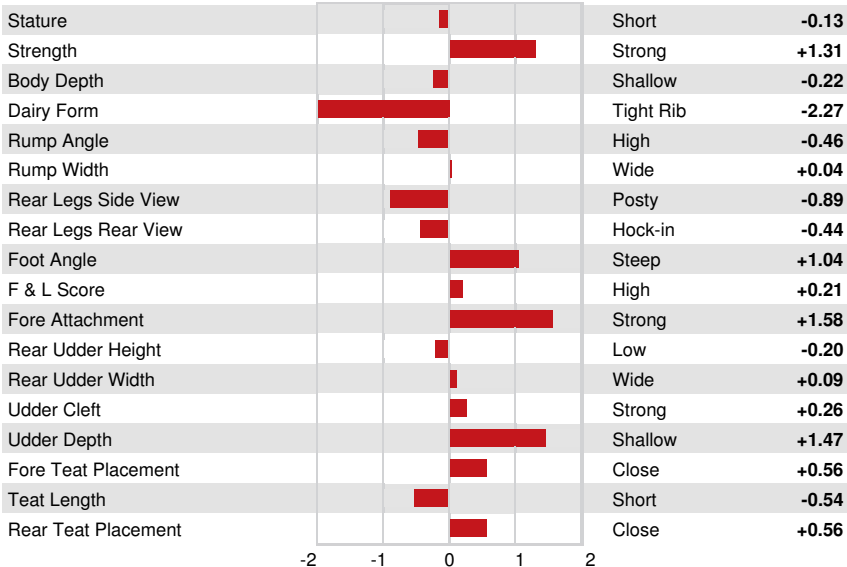
Milk lbs	Fat lbs	Fat %	Protein lbs	Protein %
46	46	+0.17	25	+0.09
NM\$ 365	CM\$ 401	FM\$ 283	GM\$ 360	DWP\$ 389
Feed Efficiency	RFI	Feed Saved	Methane Efficiency	Milking Speed
92	-34	-286	108	6.95

**HEALTH & REPRODUCTION** Immunity 101

Productive Life	3.0	Calf Immunity	95
Somatic Cell Score	2.88	Cow Conception Rate	2.9
Daughter Pregnancy Rate	2.2	Heifer Conception Rate	1.0
Livability	0.1	Sire Calving Ease	1.5% 81% Rel
Heifer Livability	0.2	Daughter Calving Ease	2.0% 82% Rel
Fertility Index	2.2	Sire Stillbirth	3.6%
		Daughter Stillbirth	4.5%

**CONFORMATION** 420 Herds 1137 Dtrs 88% Rel MACE / 04-26

PTAT	0.26	Body Composite	1.97
Udder Composite	0.68	Dairy Composite	-1.79
Feet & Legs Composite	0.13		



ROCKWELLA FARM ROCKNROLL DEANNE  
 DAUGHTER



ROCKNROLL DAUGHTER GROUP  
 L TO R - ROCKWELLA FARM ROCKNROLL DIXIE, ROCKWELLA FARM  
 ROCKNROLL DEANNE