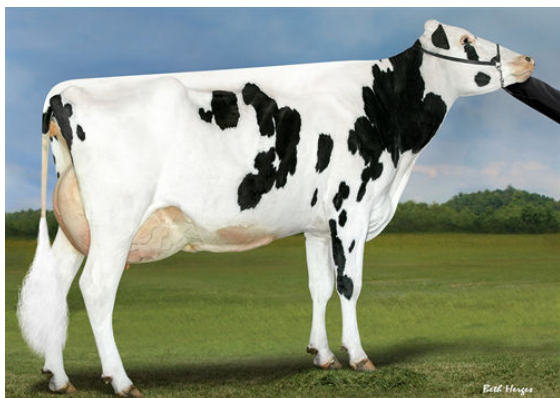




SIEMERS BRAVE
 PROGENESIS PYRAMID MOLINA VG-85-3YR-CAN
 PROGENESIS PYRAMID
 PROGENESIS TOPNOTCH MACIE GP-83-2YR-CAN 1*
 PROGENESIS TOPNOTCH
 PROGENESIS DUKE MELEE VG-87-5YR-USA 9*



PROGENESIS TOPNOTCH MACIE
 GRANDDAM



PROGENESIS DUKE MELEE
 THIRD DAM



PEAK BOMBERO MAXIMA
 FOURTH DAM

GTPI 3009

TD	TM	TR	TL	TY	MWT	TV	99%-I	HH1F	HH2F	HH3F	HH4F	HH5F	HH6F	HCDF	HMWF
Reg. #:		HOCANM14074677			aAa: 324165			DMS: 345,135							
Born:		04/19/2021			Kappa Casein: AA			Beta Casein: A1A2							

PRODUCTION		G Herds	G Dtrs	82% Rel	CDCB-G / 04-25				
Milk lbs	347	Fat lbs	45	Fat %	+0.11	Protein lbs	25	Protein %	+0.05
NM\$	697	CM\$	725	FM\$	637	GM\$	688	DWP\$	713
Feed Efficiency	170	RFI	-186	Feed Saved	337	Methane Efficiency	92		

HEALTH & REPRODUCTION

HEALTH & REPRODUCTION		Immunity	104
Productive Life	4.8	Calf Immunity	97
Somatic Cell Score	2.65	Cow Conception Rate	1.5
Daughter Pregnancy Rate	0.5	Heifer Conception Rate	-1.6
Livability	1.7	Sire Calving Ease	1.9% 95% Rel
Heifer Livability	-0.2	Daughter Calving Ease	2.5% 71% Rel
Fertility Index	0.7	Sire Stillbirth	4.8%
		Daughter Stillbirth	4.0%

CONFORMATION

CONFORMATION		G Herds	G Dtrs	80% Rel	HAUSA-G / 04-25	
PTAT	0.01	Body Composite	-0.92			
Udder Composite	1.15	Dairy Composite	-1.07			
Feet & Legs Composite	-1.11					

