



STANTONS ALLIGATOR  
 HANALEE IMPRESSION AUDI EX-90-5YR-CAN  
 MONUMENT IMPRESSION  
 HANALEE AFTERSHOCK AMY EX-90-2E-CAN  
 MS ATLEES SHT AFTERSHOCK  
 HANALEE LAUTHORITY APHRODITE VG-85-2YR-CAN

**GTPI 2417**

VG-CAN	TD	TR	TL	XIF	TY	MWT	TV	99%-1	HH1F	HH2F	HH3F	HH4F	HH5C	HH6F	HCDF	HMWF		
Reg. #:	HOCANM13849880		aAa:		234165		DMS:		246,126		Kappa Casein:		AA		Beta Casein:		A2A2	
Born:		11/13/2020		Kappa Casein:		AA		Beta Casein:		A2A2								

PRODUCTION		317 Herds	740 Dtrs	92% Rel	MACE-G / 12-25				
Milk lbs	-691	Fat lbs	-11	Fat %	+0.07	Protein lbs	-26	Protein %	-0.01
NM\$	-303	CM\$	-305	FM\$	-293	GM\$	-310	DWP\$	-263
Feed Efficiency	-97	RFI	-42	Feed Saved	-255	Methane Efficiency	93	Milking Speed	6.46
Daughter Average (ME)		Milk	27,116 lbs	Fat	1,135 lbs	Protein	864 lbs		

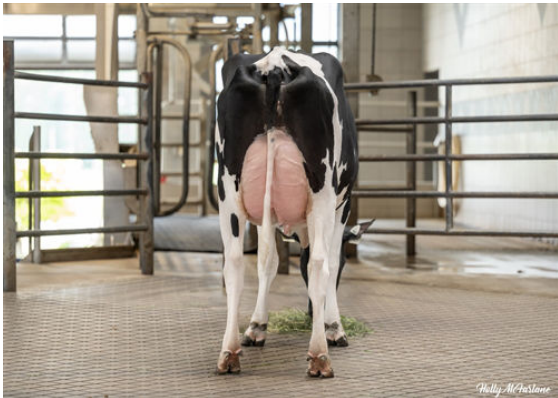
HEALTH & REPRODUCTION		Immunity		99
Productive Life	-1.0	Calf Immunity	100	
Somatic Cell Score	2.76	Cow Conception Rate	0.2	
Daughter Pregnancy Rate	-0.2	Heifer Conception Rate	1.6	
Livability	-2.0	Sire Calving Ease	1.9%	88% Rel
Heifer Livability	0.5	Daughter Calving Ease	2.9%	85% Rel
Fertility Index	-0.1	Sire Stillbirth	5.0%	
		Daughter Stillbirth	5.1%	

CONFORMATION		212 Herds	378 Dtrs	85% Rel	MACE / 12-25	
PTAT	2.24	Body Composite	1.83			
Udder Composite	1.20	Dairy Composite	1.40			
Feet & Legs Composite	1.37					

Stature		Tall	+2.38
Strength		Strong	+1.63
Body Depth		Deep	+2.11
Dairy Form		Open Rib	+1.18
Rump Angle		Sloped	+0.07
Rump Width		Wide	+2.89
Rear Legs Side View		Sickle	+1.66
Rear Legs Rear View		Straight	+1.68
Foot Angle		Steep	+1.49
F & L Score		High	+1.88
Fore Attachment		Strong	+1.59
Rear Udder Height		High	+2.09
Rear Udder Width		Wide	+2.05
Udder Cleft		Strong	+1.53
Udder Depth		Shallow	+1.57
Fore Teat Placement		Close	+0.40
Teat Length		Long	+1.13
Rear Teat Placement		Wide	-0.14



PROGENESIS ACTIONMAN AMIDALA  
 DAUGHTER



PROGENESIS ACTIONMAN AMIDALA  
 DAUGHTER