



BEYOND SHEEPSTER DONALD
 BEYOND FGARO 26006 5421 VG-88-3YR-USA DOM
 OCD PERFECT FIGARO
 AOT DELUXE HI-LIGHTED EX-91-3YR-USA DOM 2*
 C-HAVEN POSITIVE DELUXE
 AOT BIGGELO HASKEL2 EX-92-5YR-USA DOM

GTPI 3401

TD TR TL TY TV 99%-I HH1F HH2F HH3F HH4F HH5F HH6F HCDF HMWF

Reg. #: HO840M3296576703 aAa: DMS:
 Born: 02/22/2025 Kappa Casein: AA Beta Casein: A2A2

PRODUCTION G Herds G Dtrs 80% Rel CDCB-G / 04-26

Milk lbs 1337	Fat lbs 136	Fat % +0.29	Protein lbs 55	Protein % +0.04
NM\$ 991	CM\$ 1015	FM\$ 938	GM\$ 951	DWP\$ 1168
Feed Efficiency 366	RFI -57	Feed Saved 152	Methane Efficiency 100	Milking Speed 6.83

HEALTH & REPRODUCTION

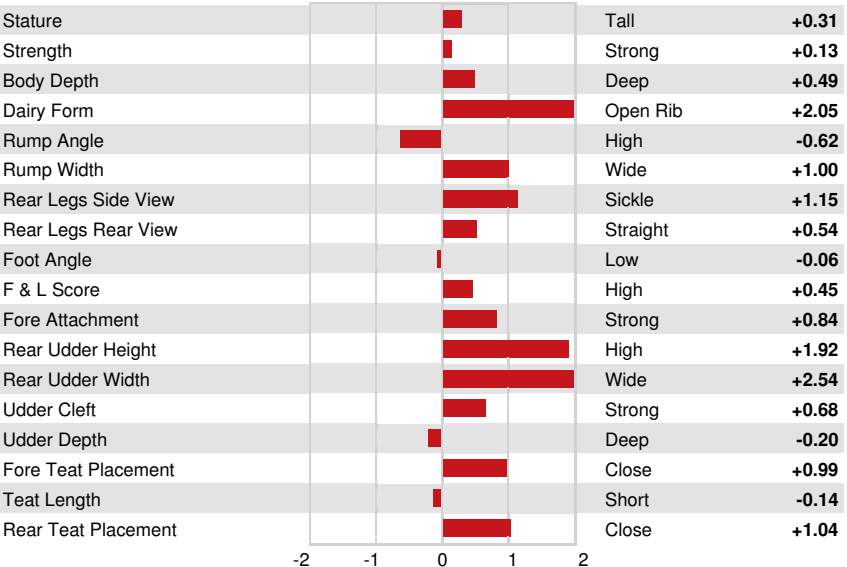
Immunity **103**

Productive Life	2.5	Calf Immunity	104
Somatic Cell Score	2.88	Cow Conception Rate	-1.8
Daughter Pregnancy Rate	-2.8	Heifer Conception Rate	1.8
Livability	-2.4	Sire Calving Ease	1.4% 63% Rel
Heifer Livability	0.0	Daughter Calving Ease	1.8% 58% Rel
Fertility Index	-1.3	Sire Stillbirth	3.8%
		Daughter Stillbirth	4.7%

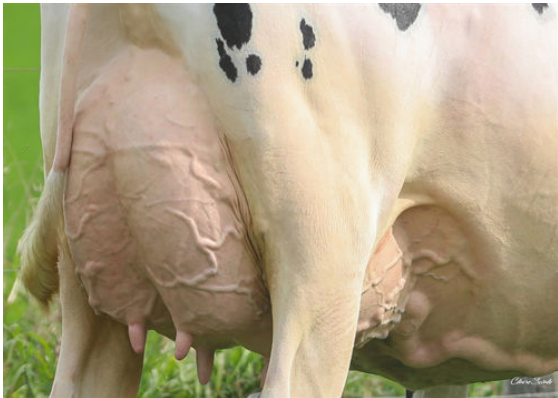
CONFORMATION

G Herds G Dtrs 79% Rel HAUSA-G / 04-26

PTAT	1.48	Body Composite	-0.59
Udder Composite	1.26	Dairy Composite	1.02
Feet & Legs Composite	0.37		



AOT DELUXE HI-LIGHTED
 GRANDDAM



AOT DELUXE HI-LIGHTED
 GRANDDAM



AOT DELUXE HI-LIGHTED
 GRANDDAM