

M A C O

200HO4483

SCOTTY

(Rudolph x Mason x Thor x Blackstar)

GP-ST



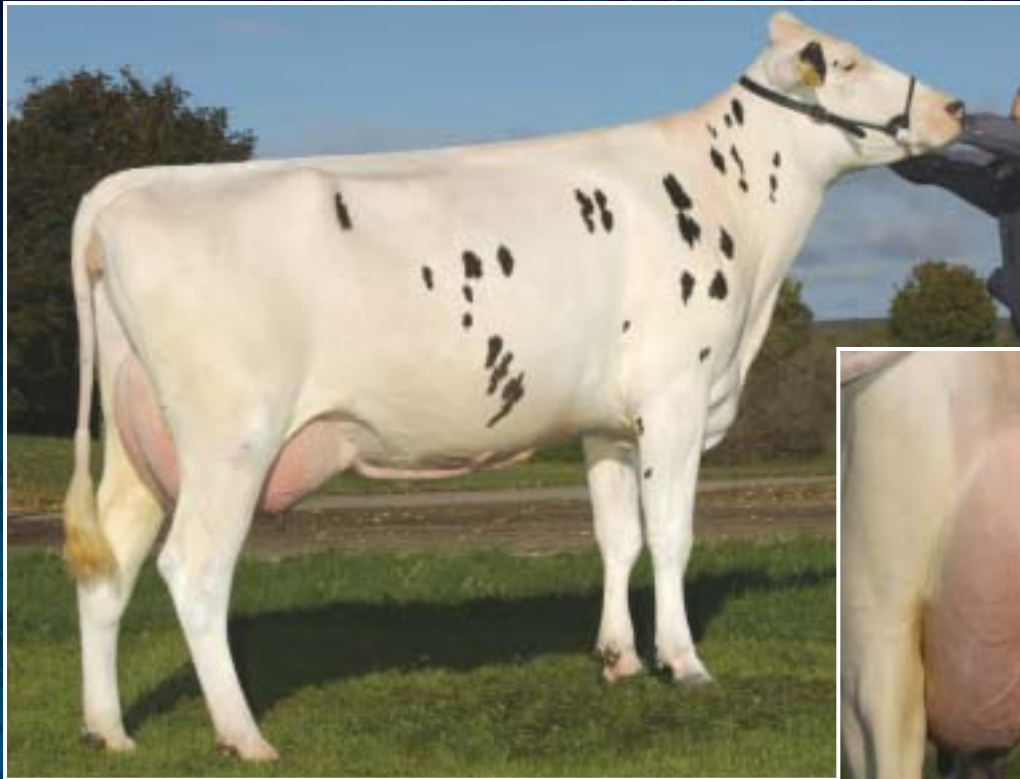
FLEURITALE CROCHE SCOTTY GP-82-2YR-CAN

MGS: Rothrock Lucius-ET

Ferme Fleuritale, Princeville, Québec

**ONE OF SEMEX'S
BEST RUDOLPH
SONS**

**SEMEX**



ROFER SCOTTY 412 GP-83-2YR-CAN

MGS: Combination Supersire
2-02 305 8,195 5.0% 406 3.7% 302 kg proj.
18,067 895 666 lbs
Ferme Jocelyn Ferron & Associes, St. Leon, Québec



FLEURITALE CROCHE SCOTTY GP-82-2YR-CAN

MGS: Rothrock Lucius-ET
Ferme Fleuritale, Princeville, Québec

COMPONENTS CALVING EASE DAIRY CHARACTER & STYLE

M A C O 200HO4483
SCOTTY
(Rudolph x Mason x Thor x Blackstar) GP-ST



LYNEGUY SCOTTY FANNY 50% GP-82-2YR-CAN

Pierre Guimond, St. Camille, Québec

“What I like about my SCOTTY daughter is the beautiful, silky texture of her udder. Fanny's calm temperament and good milking speed are remarkable. She has a strong topline, well-positioned pins and very good milk components.”

– Pierre Guimond

**SEMEX**

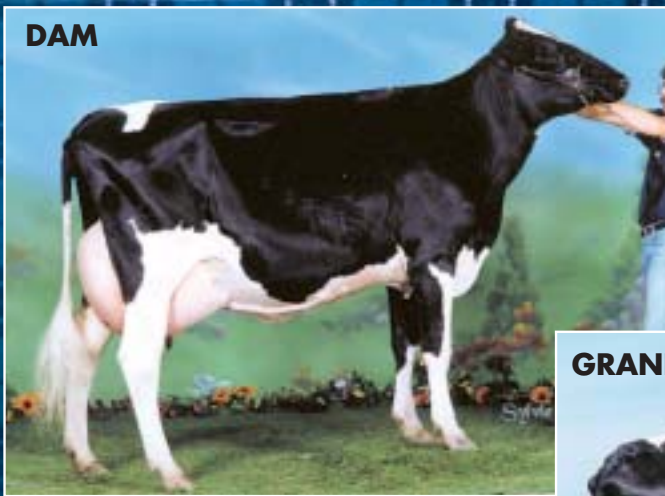


M A C O 200HO4483
SCOTTY
 GP-ST

(Rudolph x
 Mason x
 Thor x
 Blackstar)

Reg. #: **CANM8150222**
 Born: **April 16, 1999**
 aAa: **234165 DMS: 234,123**

- HIGH LPI RUDOLPH SON
- POSITIVE DEVIATIONS FOR FAT AND PROTEIN
- POSITIVE FOR FOOT ANGLE AND HEEL DEPTH
- HIGH CALVING EASE
- ONE OF THE BREED'S BEST FOR HERD LIFE



MACO PHENOMENE MASON
VG-86-2YR-CAN

MGS: Exranco Thor
 5-06 305 12,836 4.5% 580 3.5% 449 kg
 28,298 1,279 990 lbs
 Lifetime 47,870 4.6% 2,223 3.6% 1,746 kg
 105,534 4,901 3,849 lbs
 Mario Corriveau, St. Vallier, Québec



JWP THOR SYMPHONY VG-88-6YR-CAN 3*

MGS: To-Mar Blackstar-ET
 5-11 305 16,208 3.7% 605 3.1% 498 kg
 35,732 1,334 1,098 lbs
 Lifetime 70,703 3.9% 2,773 3.3% 2,322 kg
 155,872 6,113 5,119 lbs
 Mario Corriveau, St. Vallier, Québec

SCOTTY IS AN IDEAL MATING FOR DAUGHTERS OF GIBSON, LEADER, OUTSIDE, INQUIRER, MORTY, DURHAM AND BW MARSHALL.



Milner, BC
 (604) 530-1141



Guelph, ON
 (519) 821-2150



130 Stone Road West, Guelph, ON N1G 3Z2
 Telephone: (519) 821-5060 Fax: (519) 821-7225
 E-mail: info@semex.com Web Site: http://www.semex.com



Kemptville, ON
 (613) 258-5944



Saint-Hyacinthe, QC
 (450) 774-1141