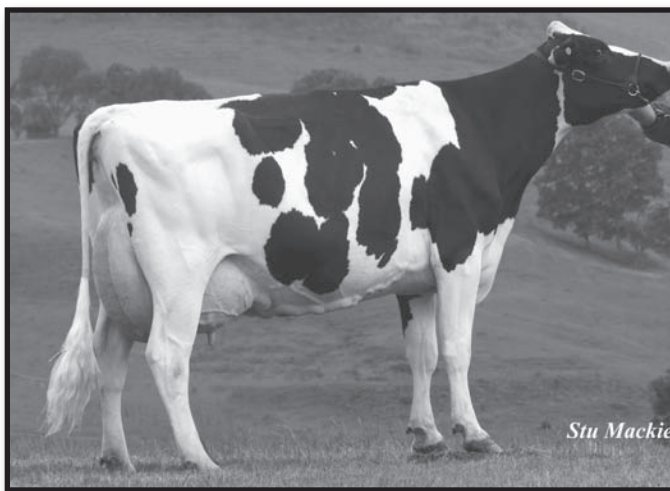


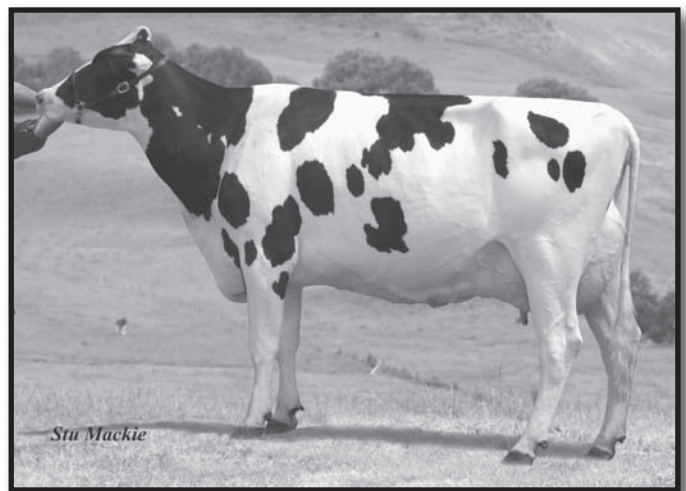


Hill Valley Aromis 0200HO08149

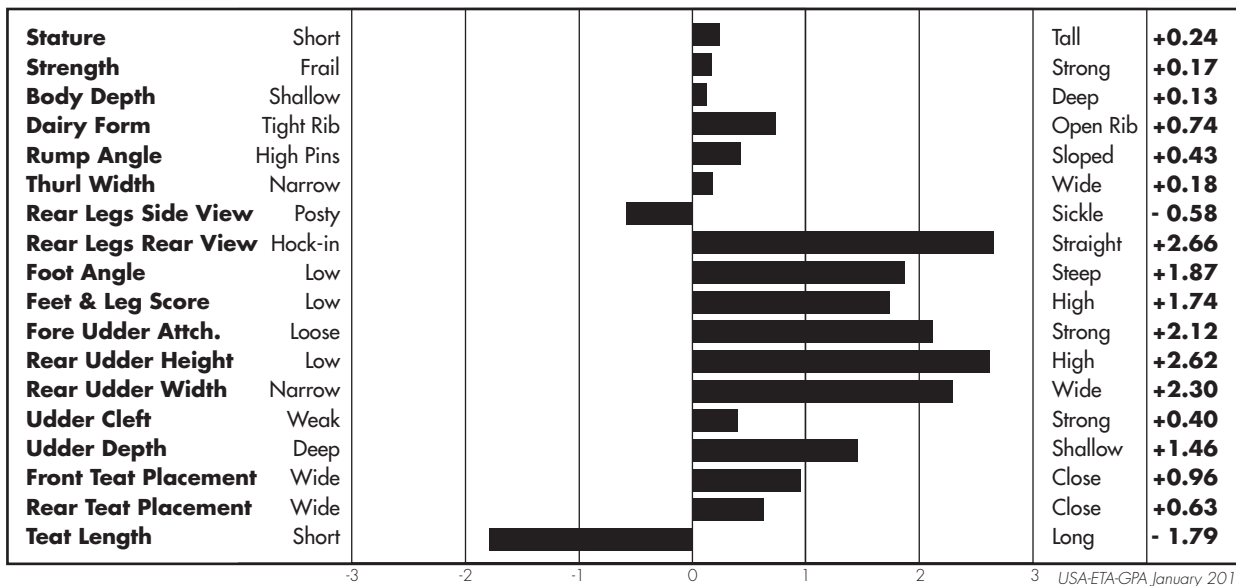
- Modern profile; moderate size with terrific udders and feet & legs
- Outcross sire stack and cow family without compromising genetic potential
- Potential herd life superstar
- Roumare x Lancelot x Dynamo



Full Sister to Dam: Hill Valley Lancelot Andrea



Dam: Hill Valley Lancelot Anara



G-PARENT AVERAGE



**SEMEX
PREMIER**

Hill Valley

0200H008149

AROMIS

USA Young Sire Program

March 2010

Hill Valley Aromis

Reg. #: AUS1496140

Born: 6/10/2008

aAa:

DMS: 456, 345

Genomic Parent Average HA/01-10

Milk: +920 **Fat:** +39 **Pro.:** +41

PTAT: +1.45 **UDC:** +1.75 **FLC:** +1.85

PL: +5.8 **SCS:** 2.86 **SCE:** 8%

GTPI: +2099G **NM\$:** +622 **SCE:** 70% Rel.

* GTPI indicates genomic data was supplied to USDA

ROUMARE

HOFRAM2217051448 *BLF*CVF GT
MACE Jan*10 83%Rel MLPI+1900/99%
KG M+879/70% F+54/93% %F+0.21
SCS 2.87 P+55/97% %P+0.27
MACE Jan*10 69%Rel Conf+9/95%
MS+7 F&L+4 DS+6 R+1

JOCKO BESH

HOFRAM5694028588 *BLF*CVF GT
EX-95-6YR-FRA
CAN-GEBV Jan*10 94%Rel GLPI+955/82%
KG M+1647 F+32 %F-0.25 P+52 %P-0.01
CAN-GEBV Jan*10 89%Rel Conf+2

ODESSA 1270

HOFRAF2298001828
EX-90-8YR-FRA
05-05 305 27043 1053 3.9 912 3.4
6 LACT: 171491 7074 4.1 5974 3.5 LB

HILL VALLEY LANCELOT ANARA-ET

HOAUSF1303132 ET B:2004 Jun 23
VG-85-4YR-AUS
CAN-PA Jan*10 29%Rel PA LPI+184
KG M+273/54% F+25/77% %F+0.14
SCS 3.23 P+25/83% %P+0.14
CAN-PA Jan*10 28%Rel Conf-3/5%
MS-2 F&L-5 DS-3 R+2
02-08 305 13840 555 4.0 491 3.6
03-11 305 21834 820 3.8 769 3.5
2 LACT: 35674 1375 3.9 1261 3.5 LB

LANCELOT

HODEUM254210 *BLF*CVF*BRC ET GT
GM SP'09
CAN-GEBV Jan*10 97%Rel GLPI+1105/88%
KG M+747 F+46 %F+0.17 P+51 %P+0.23
CAN-GEBV Jan*10 95%Rel Conf+0

HILL VALLEY NUCLEAR ANDREA-ET

HOAUSF956561 ET
VG-88-6YR-AUS
02-00 305 20396 690 3.4 734 3.6
03-09 305 23851 945 4.0 861 3.6
05-11 305 26018 976 3.8 875 3.4
3 LACT: 70267 2612 3.7 2471 3.5 LB

3rd Dam:	VG-88-8YR-AUS
4th Dam:	VG-88-6YR-AUS
5th Dam:	VG-88-5YR-AUS
6th Dam:	VG-89-15YR-AUS
7th Dam:	VG-85-13YR-AUS

100%
**CVM & BLAD
FREE
SIRE**

Semex USA Inc.
2866 Agriculture Drive
Madison, WI 53718
1-800-303-2855