



3 Steps to 360



Gauge
your herd's
current genetics

GenoPlan

GenoPlan evaluates the strengths and weaknesses of your herd.

Step 1

CANADIAN DAIRY NETWORK GENETIC INFORMATION

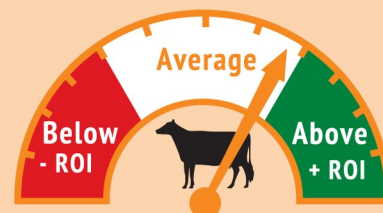
Conformation
Production
Fertility
Health
Age
LPI

GENETIC POTENTIAL



Your criteria is used to assess genetic potential and compare it to actual performance.

COMPARE TO BREED AVERAGE



REPORT CARD IS GENERATED



Choose
appropriate sires

SemexWorks

With the help of your EastGen rep, use the report to see where you can improve.

Step 2



The report summarizes all the data and highlights opportunities for herd improvement.

By using **SemexWorks™** with your rep, you can choose the sires which match your criteria so your herd reaches its full genetic potential.

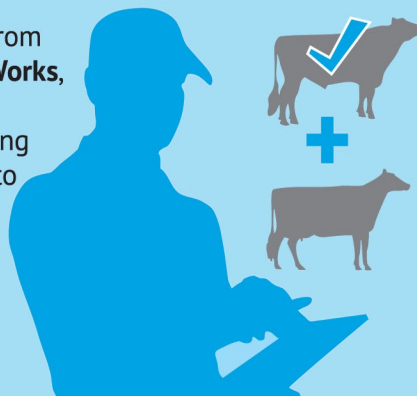
Mate your herd

ProGen

Building Excellence
Trait-By-Trait.

Step 3

With the information from **GenoPlan** and **SemexWorks**, your EastGen rep will develop a custom mating plan that also takes into account inbreeding and recessive genes.



THE HERD
YOU WANT