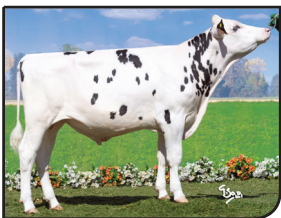


Invested in your future. Engagé à fond dans votre avenir.

- Semen Sales:** Genomic bull availability can change on a daily basis. To reserve semen on a specific sire on a first-come-first-serve basis or learn more about availability, call your local EastGen Regional Sales Representative.
- Insemination Service:** Keep this list by your phone. Call EastGen's dispatch to find out which Premier Program Genomic Sires will be available today.
- Ventes de semence :** La disponibilité des taureaux génomiques peut changer tous les jours. Pour réserver la semence d'un taureau spécifique selon le principe de premier arrivé, premier servi, communiquez avec votre représentant commercial régional d'EastGen.
- Service d'insémination :** Gardez cette liste près de votre téléphone. Appelez le service de répartition d'EastGen pour savoir quels taureaux génomiques du programme Premier seront disponibles aujourd'hui.



Retail: \$25 **You Pay * \$10**

GO-FARM SYNCRO
0200HO07887 ITAM19991289736

SIRE: RICHMOND-FD EL BOMBERO
DAM: ALL.NURE EPIC CMAIRY SECOND
MGS: GENERATIONS EPIC

GPA LPI/IPV MPG +3175
M/L +1697 F/G +80 (+0.17) P +62 (+0.05)
Conf. +11 SCS/CS 2.65
Calving Ability/Apt. au vêlage 104



Retail: \$35 **You Pay * \$14**

IHG VODKA
0200HO10492 HOUSAM73963376

SIRE: STANTONS MAIN EVENT
DAM: FARNEAR-TBR-BH VICKIE-ET
MGS: SEAGULL-BAY SUPERSIRE-ET

GPA LPI/IPV MPG +3195
M/L +1645 F/G +78 (+0.18) P +58 (+0.04)
Conf. +14 SCS/CS 2.78
Calving Ability/Apt. au vêlage 101



Retail: \$35 **You Pay * \$14**

SILVERRIDGE V ENCROACH
0200HO10545 HOCANM12020950

SIRE: ROCKYMOUNTAIN LOTTOMAX
DAM: VELTHUIS S G SNOW EVENING
MGS: FLEVO GENETICS SNOWMAN

GPA LPI/IPV MPG +3263
M/L +2231 F/G +81 (+0.02) P +70 (-0.03)
Conf. +13 SCS/CS 2.96
Calving Ability/Apt. au vêlage 106

Technician's Choice ⇨ Genomax Plus = High Fertility + Calving Ease

You Pay * \$15

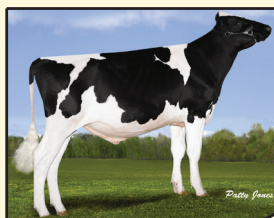


CLAYNOOK DEDUCTIVE
0200HO02935 HOCANM11595003

SIRE: AMIGHETTI NUMERO UNO ET
DAM: OCD PLANET DIAMOND-ET
MGS: ENSENADA TABOO PLANET-ET

GPA LPI/IPV MPG +3057
M/L +1217 F/G +73 (+0.26) P +47 (+.06)
Conf. +12 SCS/CS 2.75
Calving Ability/Apt. au vêlage 107 Rel 91%
Bull Fertility/ Fertilité du taureau 63 Rel 58%

You Pay * \$15



LADYS-MANOR DURBIN
0200HO10006 HOUSAM72053362

SIRE: DE-SU BKM MCCUTCHEN 1174-ET
DAM: LADYS-MANOR ALLANAS DORA-ET
MGS: BRAEDALE GOLDWYN

GPA LPI/IPV MPG +2944
M/L +728 F/G +54 (+0.27) P +42 (+.16)
Conf. +16 SCS/CS 2.84
Calving Ability/Apt. au vêlage 104 Rel 90%
Bull Fertility/ Fertilité du taureau 61 Rel 80%

GENOMAX



Retail: \$20 **You Pay * \$8**

STANTONS CAMPUS
0200HO02920 HOCANM11492068

SIRE: AMIGHETTI NUMERO UNO ET
DAM: MS CHASSITY OBS CLAIRE-ET
MGS: DE-SU OBSERVER-ET

GPA LPI/IPV MPG +2884
M/L +1200 F/G +60 (+0.13) P +30 (-0.08)
Conf. +15 SCS/CS 2.74
Calving Ability/Apt. au vêlage 102



Retail: \$20 **You Pay * \$8**

MR LOOKOUT P EMBARGO
0200HO02871 HOUSAM71302827

SIRE: MARBRI FACEBOOK
DAM: WABASH-WAY-I SHOTTLE EMBER
MGS: PICSTON SHOTTLE-ET

GPA LPI/IPV MPG +2841
M/L +1270 F/G +69 (+.21) P +54 (+.11)
Conf. +9 SCS/CS 3.00
Calving Ability/Apt. au vêlage 99

* Net price for qualifying herds that classify and milk record

* Prix net pour les troupeaux admissibles qui utilisent la classification et le contrôle laitier.

If not on milk recording & classification - standard Loyalty Levels apply

Pour ceux qui n'utilisent pas le contrôle laitier et la classification, les niveaux de fidélité standards s'appliquent.

EastGen EAST

Invested in your future.

Engagé à fond dans votre avenir.



Dam: MS CHASSITY OBS CLAIRE-ET VG-87-2YR-CAN 3*

Genomax™
Leading Genetics

STANTONS 0200HO02920

CAMPUS

NUMERO UNO X OBSERVER

 **Robot Ready™**

SIRE: AMIGHETTI NUMERO UNO ET
DAM: MS CHASSITY OBS CLAIRE-ET
MGS: DE-SU OBSERVER-ET

GPA LPI/IPV MPG +2884
M/L +1200 F/G +60 (+0.13) P +30 (-0.08)
Conf. +15 SCS/CS 2.74
Calving Ability/Apt. au vêlage 102

I



Dam: WABASH-WAY-I SHOTTLE EMBER VG-88-6YR-CAN 2*

MR LOOKOUT P 0200HO02871

EMBARGO

FACEBOOK X SHOTTLE

 **Immunity+™**

 **A2A2**

SIRE: MARBRI FACEBOOK
DAM: WABASH-WAY-I SHOTTLE EMBER
MGS: PICSTON SHOTTLE-ET

GPA LPI/IPV MPG +2841
M/L +1270 F/G +69 (+.21) P +54 (+.11)
Conf. +9 SCS/CS 3.00
Calving Ability/Apt. au vêlage 99

 **SEMEX®**



www.eastgen.ca

EastGen

Invested in your future.

Engagé à fond dans votre avenir.



Immunity+

HealthSmart

Repromax

Robot Ready

Calving Ease

A2A2



Dam: OCD PLANET DIAMOND-ET VG-88-6YR-CAN 9*

Technician's Choice

Genomax Plus

CLAYNOOK

0200HO02935

DEDUCTIVE

NUMERO UNO X PLANET

SIRE: AMIGHETTI NUMERO UNO ET

DAM: OCD PLANET DIAMOND-ET

MGS: ENSENADA TABOO PLANET-ET

GPA LPI/IPV MPG +3057

M/L +1217

F/G +73 (+.26)

P +47 (+.06)

Conformation +12

SCS/CS 2.75

Calving Ability/Apt. au vêlage 107

Bull Fertility/Fertilité du taureau 63 Rel 58%



Repromax

Robot Ready

Calving Ease



Dam: LADYS-MANOR ALLANAS DORA-ET EX-94-6YR USA

LADYS-MANOR

0200HO10006

DURBIN

MCCUTCHEN X GOLDWYN

SIRE: DE-SU BKM MCCUTCHEN 1174

DAM: LADYS-MANOR ALLANAS DORA

MGS: BRAEDALE GOLDWYN

GPA LPI/IPV MPG +2944

M/L +728

F/G +54 (+.27)

P +42 (+.16)

Conformation +16

SCS/CS 2.84

Calving Ability/Apt. au vêlage 104

Bull Fertility/Fertilité du taureau 61 Rel 80%

SEMEX

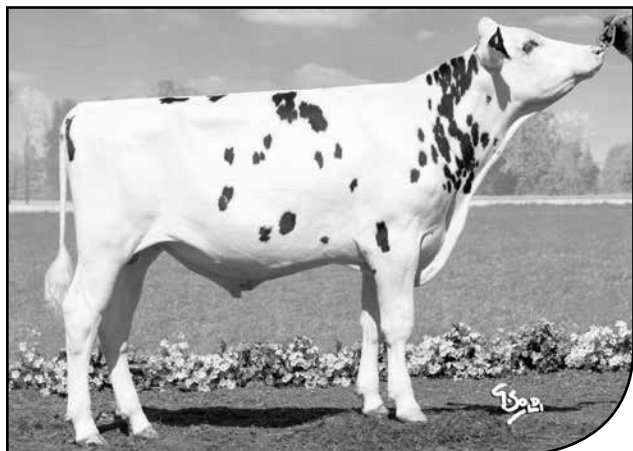


www.eastgen.ca

0200HO07887

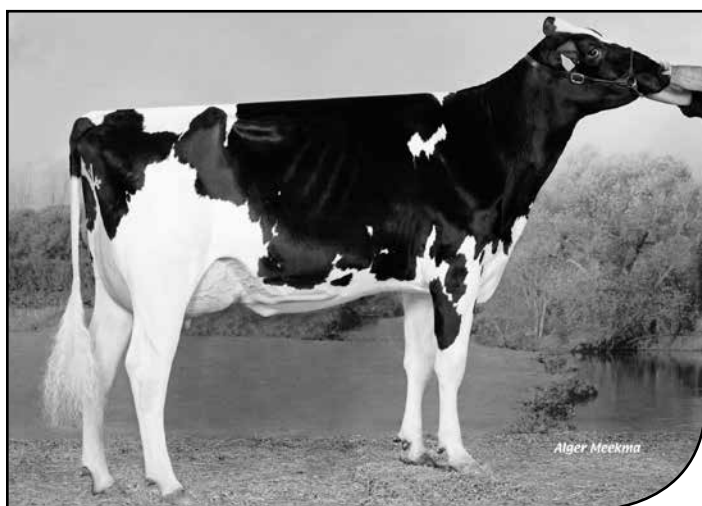
GO-FARM **SYNCRO-ET**

EL BOMBERO X EPIC X JEEVES

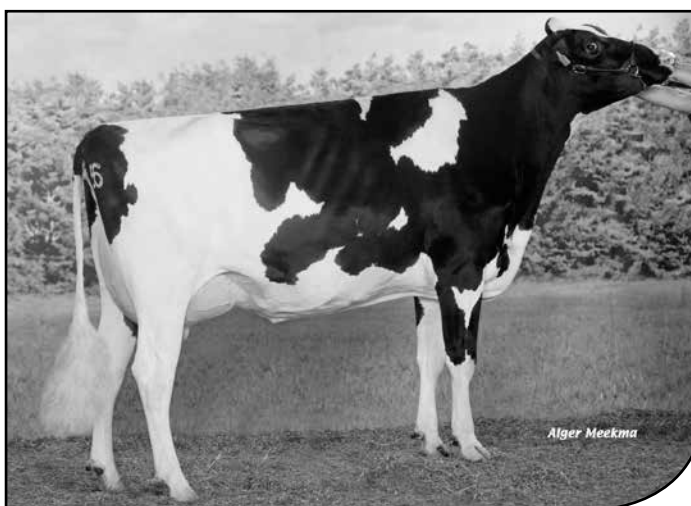


Breeder(s)/Éleveur(s): Go-Farm Holstein, Casalmorano, ITA

- High DGVs for Pro\$ (+2629), fat yields (+91 kg) and herd life (+113)
- Des VGD élevées pour le Pro\$ (+2629), le rendement en gras (+91 kg) et la durée de vie (+113)



2nd DAM/GMM:
CAPS MAIRY 14 VG-3YR NLD



3rd DAM/AGMM:
CAPS MAIRY 4 VG-3YR NLD

CAN - GPA/MPG 12/2015

| | |
|---------------------|--------------|
| Milk/Lait kg | 1697 |
| Fat/Gras kg | 80 |
| Fat/Gras % | + .17 |
| Prot. kg | 62 |
| Prot. % | + .05 |
| SCS/CS | 2.65 |
| Conformation | 11 |
| LPI/IPV | 3175 |



GO-FARM SYNCRO-ET PB 0200HO07887
 HOITAMI9991289736 *CVF*RDF*BYF*BLF*DPF*CNF ET B:2014 Sep 21
 VG-85-ITA
 CAN-GPA Dec*15 72%Rel GPA LPI+3175/68%
 KG M+1697/94% F+80/97% %F+0.17 PRO\$
 SCS 2.65 P+62/97% %P+0.05 +2427
 CAN-GPA Dec*15 69%Rel Conf+11
 MS+11 F&L+7 DS+3 R+4

Herd Life/Dur e de vie 113
 Daughter Fertility/Fertilit  des filles 107
 Calving Ability/Aptitude au v lage 104

Prepared for:
 THE SEMEX ALLIANCE
 GUELPH ON
 Tel: 519-821-5060

4th & 5th Maternal Dam
 CAPS MAIRY 1 VG-85-2YR-NLD
 CAPS MAIRY VG-87-2YR-NLD

RICHMOND-FD EL BOMBERO-ET PB
 HOUSAM71637328 *CVF*RDF*BYF*BLF*DPF*CNF ET
 EX-90-CAN
 F&L:90 DS:90 R:90
 CAN-GPA Dec*15 76%Rel GPA LPI+3119/72%
 KG M+1522/91% F+84/98% %F+0.26 PRO\$
 SCS 2.71 P+53/93% %P+0.04 +2211
 CAN-GPA Dec*15 73%Rel Conf+12
 MS+11 F&L+9 DS+6 R+4

AMIGHETTI NUMERO UNO ET PB
 HOITAM17990915143 *CVF*BYF*BLF*DPF ET
 EX-90-3YR-HUN ST'15
 CAN-GEBV Dec*15 98%Rel GLPI+3147/92%
 KG M+154 F+74 %F+0.63 P+25 %P+0.18
 CAN-GEBV Dec*15 96%Rel Conf+16

RICHMOND-FD S BARBARA-ET PB
 HOUSAF69305043 *BYF ET
 VG-87-2YR-USA
 02-04 305 15177 635 4.2 483 3.2
 1 LACT: 18262 789 4.3 611 3.3 KG

LONG-LANGS OMAN OMAN-ET PB
 HOUSAM135746776 *CVF*BYF*BLF ET
 VG-85-4YR-USA GM'10 EXTRA'12

AMIGHETTI SHOTTLE AVE PB
 HOITAF17990346074 ET
 VG-89-ITA

CHARLESDALE SUPERSTITION-ET PB
 HOUSAM62065919 *CVF*RDF*BYF*BLF*DPF ET
 GM'12

RICHMOND-FD BARBIE PB
 HOUSAF65722644 *BYF
 EX-92-2E-USA

ALL.NURE EPIC CMAIRY SECOND ET PB
 HOITAF33990287536 ET B:2012 Jul 06
 VG-85-NLD
 GMACE Dec*15 77%Rel GMLPI+2750/73%
 KG M+1136/90% F+36/81% %F-0.05 PRO\$
 SCS 2.58 P+28/84% %P-0.08 +1833
 GMACE Dec*15 74%Rel Conf+9/93%
 MS+11 F&L+3 DS-1 R+5
 02-04 305 11454 398 3.5 360 3.1
 344 12711 448 3.5 402 3.2
 1 LACT: 12711 448 3.5 402 3.2 KG

GENERATIONS EPIC PB
 HOCANM11104016 *CVF*BYF*BLF*DPF ET
 EX-94-CAN ST'15
 CAN-GEBV Dec*15 98%Rel GLPI+2873/94%
 KG M+1554 F+38 %F-0.15 P+54 %P+0.02
 CAN-GEBV Dec*15 97%Rel Conf+12

CAPS MAIRY 14 PB
 HONLDF569274188
 VG-85-3YR-NLD
 02-06 305 11453 496 4.3 395 3.4
 1 LACT: 17184 786 4.6 609 3.5 KG

CHARLESDALE SUPERSTITION-ET PB
 HOUSAM62065919 *CVF*RDF*BYF*BLF*DPF ET
 GM'12

TRAMILDA-N BAXTER EMILY-ET PB
 HOUSAF139232811 ET
 VG-85-2YR-CAN 11*(2/54)

KED OUTSIDE JEEVES-ET PB
 HOUSAM134438230 *CVF*BYF*BLF ET
 GM'12

CAPS MAIRY 4 PB
 HONLDF430270273
 VG-85-3YR-NLD
 02-05 305 10093 428 4.2 370 3.7
 1 LACT: 17791 836 4.7 681 3.8 KG
 Progeny Data: OEX 1VG 1GP 0G 0F
 2 DAUS ME AVG: 13056 465 3.6 394 3.0
 AVG BCA: M247 F238 P238

The information herein contained is based upon the records maintained by the Holstein Association of Canada. The accuracy of the information is not guaranteed and is subject to correction according to the Association's By-laws.

L'information contenue dans la pr sente est fond e sur les registres tenus   jour par l'Association Holstein du Canada. L'exactitude de cette information n'est pas garantie et est assujettie   des corrections conform ment aux Statuts de l'Association.

0200HO10492

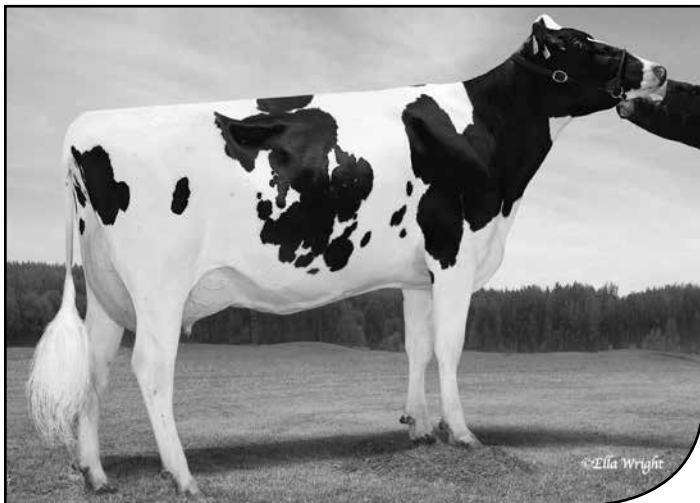
IHG VODKA-ET

EVENT X SUPERSIRE X SHOTTLE



Breeder(s)/Éleveur(s): Innovative Holstein Genetics LLC, Springfield, IL, USA

- Dam scored 87 and from the famous Starbuck Ada cow family, EX94-2E US 4*
- La mère classifiée TB87 est issue de la célèbre famille de Starbuck Ada, EX94-2E US 4*



MATERNAL SISTER TO DAM/SOEUR MATERNELLE DE LA MÈRE:
FARNEAR-TBR-BH VEGAS-ET VG86-2YR CAN



2nd DAM/GMM:
VISION-GEN SH SHO A12037-ET VG87-2YR USA 2*

**CAN - GPA/MPG
 12/2015**

| | |
|---------------------|-------------|
| Milk/Lait kg | 1645 |
| Fat/Gras kg | 78 |
| Fat/Gras % | +.18 |
| Prot. kg | 58 |
| Prot. % | +.04 |
| SCS/CS | 2.78 |
| Conformation | 14 |
| LPI/IPV | 3195 |



IHG VODKA-ET PB 0200HO10492
HOUSAM73963376 *CVF*RDF*BYF*BLF*DPF*CNF ET B:2014 Sep 05
CAN-GPA Dec*15 72%Rel GPA LPI+3195/67%
KG M+1645/93% F+78/97% %F+0.18 PRO\$
SCS 2.78 P+58/95% %P+0.04 +2302
CAN-GPA Dec*15 68%Rel Conf+14
MS+12 F&L+11 DS+8 R+4

Herd Life/Dur e de vie 111
Daughter Fertility/Fertilit  des filles 106
Calving Ability/Aptitude au v lage 101

Prepared for:
THE SEMEX ALLIANCE
GUELPH ON
Tel: 519-821-5060

4th-6th Maternal Dam
BVK OUTSIDE DIANA-ET EX-92-2E-USA
MS KINGSTEAD CHIEF ADEEN-ET EX-94-2E-USA 8*
AITKENBRAE STARBUCK ADA EX-94-2E-USA 4*

STANTONS MAIN EVENT PB
HOCANM11596146 *CVF*BYF*BLF ET
CAN-GPA Dec*15 76%Rel GPA LPI+3014/71%
KG M+1245/82% F+60/90% %F+0.15 PRO\$
SCS 2.84 P+52/92% %P+0.09 +2003
CAN-GPA Dec*15 72%Rel Conf+12
MS+11 F&L+11 DS+5 R+3

FARNEAR-TBR-BH VICKIE-ET PB
HOUSAF71290953 *CVF B:2012 Nov 11
VG-87-2YR-USA
GMACE Dec*15 75%Rel GPA LPI+3113/70%
KG M+1838/98% F+83/99% %F+0.14 PRO\$
SCS 2.91 P+64/99% %P+0.04 +2162
CAN-GPA Dec*15 71%Rel Conf+12/98%
MS+9 F&L+6 DS+10 R+2

Lactation in progress:
2-02 3X 305 15 060 577 3.8 487 3.2 kg

MOUNTFIELD SSI DCY MOGUL-ET PB
HO840M3006972816 *CVF*RDF*BYF*BLF*DPF ET
EXTRA'15
CAN-GEBV Dec*15 96%Rel GLPI+2926/89%
KG M+1449 F+90 %F+0.36 P+54 %P+0.05
CAN-GEBV Dec*15 94%Rel Conf+12

STANTONS SUPER ELDA PB
HOCANF11084001 ET
GP-83-2YR-CAN 4* (0/20)
02-01 305 12369 500 4.0 408 3.3
365 14217 578 4.1 471 3.3
BCA 304 327 314
1 LACT: 16406 660 4.0 548 3.3 KG

SEAGULL-BAY SUPERSIRE-ET PB
HOUSAM69981349 *CVF*BYF*BLF*DPF ET
SP'15
CAN-GEBV Dec*15 94%Rel GLPI+2891/86%
KG M+2363 F+96 %F+0.12 P+78 %P+0.00
CAN-GEBV Dec*15 89%Rel Conf+5

VISION-GEN SH SHO A12037-ET PB
HOUSAF69517373 *BLF ET
VG-87-2YR-USA 2* (4/9)
02-02 305 11989 440 3.7 409 3.4
327 12837 474 3.7 439 3.4
1 LACT: 12837 474 3.7 439 3.4 KG
Progeny Data: 0EX 4VG 0GP 0G 0F
4 DAUS ME AVG: 17798 786 4.4 552 3.1
AVG BCA: M336 F403 P334

COYNE-FARMS DORCY-ET PB
HOUSAM139005002 *BYC*CVF*BLF ET
ST'15

MOUNTFIELD MARSH MAXINE-ET PB
HOUSAF62784081 ET
VG-88-2YR-USA DOM

CHARLESDALE SUPERSTITION-ET PB
HOUSAM62065919 *CVF*RDF*BYF*BLF*DPF ET
GM'12

WABASH-WAY EVETT-ET PB
HOUSAF137044384 ET
VG-86-2YR-CAN DOM 19* (6/93)

ROYLANE SOCRA ROBUST-ET PB
HOUSAM64966739 *CVF*RDF*BLF*DPF ET
VG-88-3YR-USA

AMMON-PEACHEY SHAUNA-ET PB
HOUSAF66228178 ET
EX-90-6YR-USA DOM 4* (0/24)

PICSTON SHOTTLE-ET PB
HOGBRM598172 *CVF*BYF*BLF*MPFF ET
EX-96-7YR-GBR EXTRA'09 GM'10

KY-BLUE GW DANA-ET PB
HOUSAF139457788 ET
EX-91-4YR-USA
04-01 185 7657 347 4.5 245 3.2
2 LACT: 8909 396 4.4 245 3.2 KG
Progeny Data: 0EX 1VG 0GP 0G 0F
1 DAUS ME AVG: 13074 527 4.0 422 3.2
AVG BCA: M247 F270 P255

The information herein contained is based upon the records maintained by the Holstein Association of Canada. The accuracy of the information is not guaranteed and is subject to correction according to the Association's By-laws.

L'information contenue dans la pr sente est fond e sur les registres tenus   jour par l'Association Holstein du Canada. L'exactitude de cette information n'est pas garantie et est assujettie   des corrections conform ment aux Statuts de l'Association.

0200HO10545

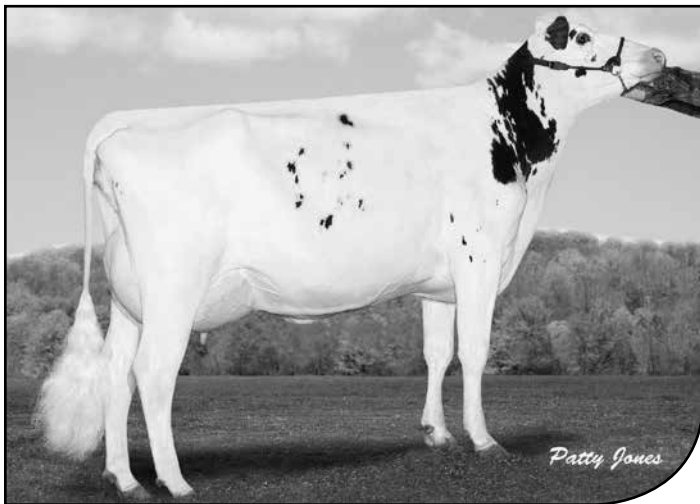
SILVERRIDGE V **ENCROACH**

LOTTOMAX X SNOWMAN X PLANET

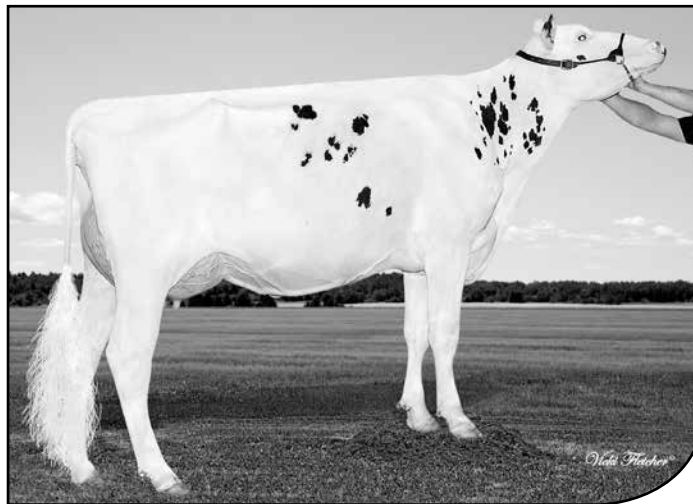


Breeder(s)/Éleveur(s): Silverridge Farms Ltd., Springfield, ON

- Maternal brother to the popular Wickham, Envious and Endure sires
- Frère maternel des taureaux populaires Wickham, Envious et Endure



2nd DAM/GMM:
CALBRETT PLANET EVE VG86-5YR CAN 3*



MATERNAL SISTER TO/SOEUR MATERNELLE DE: ENCROACH
SILVERRIDGE V MOGUL EVON VG87-2YR CAN

CAN - GPA/MPG
12/2015

| | |
|---------------------|-------------|
| Milk/Lait kg | 2231 |
| Fat/Gras kg | 81 |
| Fat/Gras % | +0.2 |
| Prot. kg | 70 |
| Prot. % | -0.3 |
| SCS/CS | 2.96 |
| Conformation | 13 |
| LPI/IPV | 3263 |



SILVERRIDGE V ENCROACH PB 0200HO10545
 HOCANM12020950 *CVF*RDF*BYF*BLF*DPF*CNF ET B:2014 Nov 19
 CAN-GPA Dec*15 73%Rel GPA LPI+3263/68%
 KG M+2231/98% F+81/97% %F+0.02 PRO\$
 SCS 2.96 P+70/98% %P-0.03 +2376
 CAN-GPA Dec*15 69%Rel Conf+13
 MS+13 F&L+13 DS+4 R+2

Herd Life/Durée de vie 110
 Daughter Fertility/Fertilité des filles 105
 Calving Ability/Aptitude au vêlage 106

Prepared for:
 THE SEMEX ALLIANCE
 GUELPH ON
 Tel: 519-821-5060

4th-7th Maternal Dam
 CROCKETT-ACRES ELITA-ET VG-87-4YR-USA 15*
 CROCKETT-ACRES MTOT ELLY-ET EX-90-6YR-USA 11*
 WAUREGAN RUDOLPH ELLY MAE EX-90-5YR-USA
 WHITTIER-FARMS LEAD MAE-ET EX-95-3E-USA

ROCKYMOUNTAIN LOTTOMAX PB
 HOCANM11445882 *CVF*RDF*BYF*BLF*DPF*CNF ET
 EX-90-CAN
 F&L:91 DS:90 R:90
 CAN-GPA Dec*15 76%Rel GPA LPI+3072/71%
 KG M+1156/79% F+75/96% %F+0.32 PRO\$
 SCS 2.78 P+43/84% %P+0.05 +2016
 CAN-GPA Dec*15 73%Rel Conf+13
 MS+13 F&L+10 DS+5 R+0

VELTHUIS S G SNOW EVENING PB
 HOCANF11294760 ETM B:2011 Jul 24
 VG-87-2YR-CAN
 MS:86(FA:7 RAH:8 RAW:8) F&L:88 DS:88 R:87
 CAN-GEBV Dec*15 78%Rel GLPI+3227/73%
 KG M+2190/99% F+81/99% %F+0.03 PRO\$
 SCS 2.88 P+72/99% %P+0.02 +2255
 CAN-GEBV Dec*15 74%Rel Conf+15/99%
 MS+13 F&L+16 DS+10 R+6
 02-02 305 13230 546 4.1 412 3.1
 365 15781 639 4.0 492 3.1
 BCA 328 362 319
 1 LACT: 29004 1179 4.1 955 3.3 KG
 AVG BCA: M328(+108) F362(+133) P319(+104)
 1 Superior Lactation
 Progeny Data: 0EX 3VG 3GP 1G 0F
 8 DAUS ME AVG: 14840 605 4.1 480 3.2
 AVG BCA: M280 F310 P290

AMIGHETTI NUMERO UNO ET PB
 HOITAM17990915143 *CVF*BYF*BLF*DPF ET
 EX-90-3YR-HUN ST'15
 CAN-GEBV Dec*15 98%Rel GLPI+3147/92%
 KG M+154 F+74 %F+0.63 P+25 %P+0.18
 CAN-GEBV Dec*15 96%Rel Conf+16
ROCKYMOUNTAIN SUPER LEITA PB
 HOCANF10945258 ET
 VG-85-2YR-CAN 1*(0/8)
 02-00 305 9636 404 4.2 290 3.0
 365 11618 468 4.0 359 3.1
 BCA 245 275 230
 1 LACT: 36760 1474 4.0 1240 3.4 KG

FLEVO GENETICS SNOWMAN PB
 HONLDM388965513 *CVF*BLF
 EXTRA'14
 CAN-GEBV Dec*15 98%Rel GLPI+2877/95%
 KG M+2303 F+60 %F-0.14 P+66 %P-0.08
 CAN-GEBV Dec*15 96%Rel Conf+12
CALBRETT PLANET EVE PB
 HOCANF9941775 ET
 VG-86-5YR-CAN 3*(0/15)
 02-04 305 13130 536 4.1 439 3.3
 365 15063 623 4.1 515 3.4
 BCA 312 346 330
 04-10 305 12859 509 4.0 432 3.4
 BCA 263 280 277
 2 LACT: 39415 1638 4.2 1392 3.5 KG
 AVG BCA: M288(+50) F313(+56) P304(+62)
 Progeny Data: 0EX 6VG 4GP 2G 0F
 15 DAUS ME AVG: 14129 534 3.8 444 3.1
 AVG BCA: M267 F274 P268

LONG-LANGS OMAN OMAN-ET PB
 HOUSAM135746776 *CVF*BYF*BLF ET
 VG-85-4YR-USA GM'10 EXTRA'12
AMIGHETTI SHOTTLE AVE PB
 HOITAF17990346074 ET
 VG-89-ITA
CHARLESDALE SUPERSTITION-ET PB
 HOUSAM62065919 *CVF*RDF*BYF*BLF*DPF ET
 GM'12
FLEURY GEN BAXTER LISA PB
 HOCANF105353207 *BRC ET
 EX-92-CAN 5*(0/26)

O-BEE MANFRED JUSTICE-ET PB
 HOUSAM122358313 *CVF*RDF*BLF*DPF ET
 EX-94-7YR-USA SP'07 GM
BROEKS MBM ELSA PB
 HONLDF381135900 ET
 EX-90-5YR-NLD 4*(15/8)
ENSENADA TABOO PLANET-ET PB
 HOUSAM60597003 *CVF*RDF*BYF*BLF*DPF ET
 EX-90-4YR-USA GM'11 EXTRA'12
WABASH-WAY EVETT-ET PB
 HOUSAF137044384 ET
 VG-86-2YR-CAN DOM 19*(6/93)
 02-02 305 12909 594 4.6 410 3.2
 365 15507 753 4.9 504 3.3
 BCA 323 401 323
 1 LACT: 16700 832 5.0 548 3.3 KG
 AVG BCA: M323(+82) F401(+133) P323(+75)
 1 Superior Lactation
 Progeny Data: 0EX 22VG 14GP 4G 0F
 41 DAUS ME AVG: 14470 556 3.8 447 3.1
 AVG BCA: M273 F285 P270

The information herein contained is based upon the records maintained by the Holstein Association of Canada. The accuracy of the information is not guaranteed and is subject to correction according to the Association's By-laws.

L'information contenue dans la présente est fondée sur les registres tenus à jour par l'Association Holstein du Canada. L'exactitude de cette information n'est pas garantie et est assujettie à des corrections conformément aux Statuts de l'Association.