

Premier™

Progeny Testing Program

Semen Sales: Young Sire availability can change on a daily basis. To reserve semen on a specific Young Sire on a first-come-first-serve basis or learn more about availability, call your local EastGen Regional Sales Representative.

Insemination Service: Keep this list by your phone. Call EastGen's dispatch to find out which Young Sires will be available today.

Vente de semence: La disponibilité de jeunes taureaux peut changer sur une base journalière. Pour réserver de la semence d'un taureau spécifique sur la base "premier arrivé, premier servi" ou pour en savoir plus sur la disponibilité, svp communiquer avec votre représentant de ventes.

Service d'insemination: Gardez cette liste à côté de votre téléphone. Téléphonnez au centre de commande d'EastGen pour connaître la liste des jeunes taureaux qui seront disponibles aujourd'hui.



SANDY-VALLEY-I PICASSO
0200HO10235 HOCANM108733947

SIRE: MR LOOKOUT P ENFORCER-ET
DAM: SANDY-VALLEY NU PENELOPE-ET
MGS: AMIGHETTI NUMERO UNO ET

GPA LPI/IPV MPG +3133
M/L +1088 F/G +67 (+.26) P +62 (+.24)
Conf. +10 SCS/CS 2.66
Calving Ability/Apt. au vêlage 102

Price: \$20

* Pricing before discount



COMESTAR NICETY
0200HO10425 HOCANM109106630

SIRE: CLAYNOOK DEDUCTIVE
DAM: MS LOOKOUT PESCE NISSA-ET
MGS: HAMMER-CREEK ALTAKOOL-ET

GPA LPI/IPV MPG +3164
M/L +865 F/G +77 (+0.45) P +58 (+.27)
Conf. +11 SCS/CS 2.66
Calving Ability/Apt. au vêlage 109

Price: \$20

* Pricing before discount



LADYS-MANOR COME OVER ET
0200HO10450 H0840M3125521754

SIRE: KELLERCREST LANCOME-ET
DAM: LADYS-MANOR DORCY ODA
MGS: COYNE-FARMS DORCY-ET

GPA LPI/IPV MPG +3085
M/L +1711 F/G +82 (+0.19) P +69 (+.11)
Conf. +9 SCS/CS 2.66
Calving Ability/Apt. au vêlage 103

Dam photo: Ladys-Manor Dorcy ODA

Price: \$20

* Pricing before discount



BENNER BARDO
0200HO10366 HOCANM11951553

SIRE: VIEUXSAULE FLAME-ET
DAM: BENNER MOGUL BOBBY SUE
MGS: MOUNTFIELD SSI DCY MOGUL-ET

GPA LPI/IPV MPG +3311
M/L +776 F/G +107 (+0.76) P +57 (+0.28)
Conf. +14 SCS/CS 2.87
Calving Ability/Apt. au vêlage 104

Price: \$25

* Pricing before discount



CLAYNOOK DENIM
0200HO10348 HOCANM11993494

SIRE: VIEUXSAULE FLAME-ET
DAM: CLAYNOOK DORINDA SNOWMAN
MGS: FLEVO GENETICS SNOWMAN

GPA LPI/IPV MPG +3249
M/L +1263 F/G +78 (+0.33) P +53 (+0.11)
Conf. +16 SCS/CS 2.61
Calving Ability/Apt. au vêlage 104

Price: \$30

* Pricing before discount



PELLERAT SHERIFF
0200HO10434 HOCANM109024521

SIRE: RICHMOND-FD EL BOMBERO-ET
DAM: PELLERAT MOGUL SHEILA
MGS: MOUNTFIELD SSI DCY MOGUL-ET

GPA LPI/IPV MPG +3165
M/L +1322 F/G +79 (+0.30) P +48 (+0.05)
Conf. +14 SCS/CS 2.54
Calving Ability/Apt. au vêlage 104

Price: \$30

* Pricing before discount



October 19, 2015 / le 19 octobre 2015

Pedigree Pack Summary #042/Sommaire des généalogies

For further information/pour l'information go to www.eastgen.ca

EastGen

0200HO10235

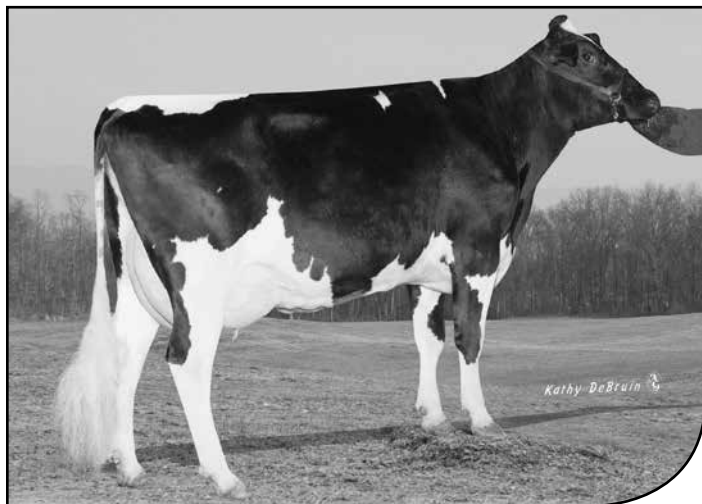
SANDY-VALLEY-I **PICASSO**

ENFORCER X NUMERO UNO X PLANET


Breeder(s)/Éleveur(s): Sandy-Valley Farms, Scandinavia, WI, USA

 **Robot Ready**TM

- From the great Rudy Missy cow family
- High DGVs for health & fertility (586), herd life (116) and daughter fertility (109)
- Issu d'une famille reconnue, les Missy
- VGD élevées pour la santé et fertilité (586), la durée de vie (116) et la fertilité des filles (109)


**CAN - GPA/MPG
08/2015**

Milk/Lait kg	1088
Fat/Gras kg	67
Fat/Gras %	+.26
Prot. kg	62
Prot. %	+.24
SCS/CS	2.66
Conformation	10
LPI/IPV	3133

 3rd DAM/AGMM:
PINE-TREE MONICA SUELA-ET VG87-2YR USA DOM

 2nd DAM/GMM:
PINE-TREE MONICA PLANETA-ET VG86-3YR USA



SANDY-VALLEY-I PICASSO PB 0200HO10235
HOCANM108733947 *CVF*RDF*BYF*BLF*DPF*CNF ET B:2013 Dec 30
CAN-GPA Aug*15 73%Rel GPA LPI+3133/70%
KG M+1088/77% F+67/94% %F+0.26 PRO\$
SCS 2.66 P+62/97% %P+0.24 +2273
CAN-GPA Aug*15 71%Rel Conf+10
MS+8 F&L+8 DS+5 R+1

Herd Life/Dur e de vie 115
Daughter Fertility/Fertilit  des filles 109
Calving Ability/Aptitude au v lage 102

Prepared for:
THE SEMEX ALLIANCE
GUELPH ON
Tel: 519-821-5060

4th-7th Maternal Dam
PINE-TREE MISSY MONICA-ET VG-85-5YR-USA
WESSWOOD-HC RUDY MISSY-ET EX-92-3E-USA
WESSWOOD ELTON MIMI EX-90-5YR-USA
WESSWOOD MANDINGO IVY VG-87-6YR-USA

MR LOOKOUT P ENFORCER-ET PB
HOUSAM71302825 *CVF*BYF*BLF*DPF ET
VG-87-2YR-CAN
F&L:86 DS:87 R:88
CAN-GPA Aug*15 79%Rel GPA LPI+3073/75%
KG M+1832/96% F+64/93% %F-0.05 PRO\$
SCS 2.97 P+75/99% %P+0.13 +2078
CAN-GPA Aug*15 77%Rel Conf+8
MS+5 F&L+9 DS+7 R+0

SANDY-VALLEY NU PENELOPE-ET PB
HOUSAF70811740 ET B:2012 Jul 29
VG-85-2YR-USA
GMACE Aug*15 75%Rel GPA LPI+3046/71%
KG M+146/46% F+72/98% %F+0.64 PRO\$
SCS 2.49 P+40/94% %P+0.32 +2153
CAN-GPA Aug*15 73%Rel Conf+10/96%
MS+10 F&L+8 DS+3 R+3

MARBRI FACEBOOK PB
HOCANM10847042 *CVF*RDF*BYF*BLF*DPF*CNF*XIF ET
EX-90-CAN SP'14
CAN-GEBV Aug*15 98%Rel GLPI+3021/94%
KG M+1691 F+98 %F+0.32 P+69 %P+0.11
CAN-GEBV Aug*15 97%Rel Conf+5
WABASH-WAY-I SHOTTLE EMBER PB
HOCANF10820327 *CVF*BLF ET
VG-88-6YR-CAN 1*(0/5)
02-03 305 14826 500 3.4 485 3.3
365 17275 601 3.5 566 3.3
BCA 363 327 370
2 LACT: 24399 865 3.5 799 3.3 KG

AMIGHETTI NUMERO UNO ET PB
HOITAM17990915143 *CVF*BYF*BLF*DPF ET
EX-90-3YR-HUN ST'15
CAN-GEBV Aug*15 95%Rel GLPI+3148/89%
KG M+16 F+70 %F+0.69 P+23 %P+0.20
CAN-GEBV Aug*15 92%Rel Conf+14
PINE-TREE MONICA PLANETA-ET PB
HOUSAF69169491 ET
VG-86-3YR-USA
02-01 305 11503 420 3.7 413 3.6
365 13916 520 3.7 504 3.6
1 LACT: 16670 639 3.8 608 3.6 KG
Progeny Data: 0EX 1VG 1GP 0G 0F
2 DAUS ME AVG: 12624 557 4.4 400 3.2
AVG BCA: M239 F286 P242

LONG-LANGS OMAN OMAN-ET PB
HOUSAM135746776 *CVF*BYF*BLF ET
VG-85-4YR-USA GM'10 EXTRA'12
SERENITYHILL AIRRAID FAWN PB
HOCANF9795505 ET
GP-80-2YR-CAN 3*(0/15)
PICSTON SHOTTLE-ET PB
HOGBRM598172 *CVF*BYF*BLF*MFF ET
EX-96-7YR-GBR EXTRA'09 GM'10
CROCKETT-ACRES ELITA-ET PB
HOUSAF136012191 ET
VG-87-4YR-USA DOM GMD 14*(0/72)

LONG-LANGS OMAN OMAN-ET PB
HOUSAM135746776 *CVF*BYF*BLF ET
VG-85-4YR-USA GM'10 EXTRA'12
AMIGHETTI SHOTTLE AVE PB
HOITAF17990346074 ET
VG-89-ITA
ENSENADA TABOO PLANET-ET PB
HOUSAM60597003 *CVF*RDF*BYF*BLF*DPF ET
EX-90-4YR-USA GM'11 EXTRA'12
PINE-TREE MONICA SUELA-ET PB
HOUSAF62848061 ET
VG-87-2YR-USA DOM
01-11 305 12533 424 3.4 420 3.4
1 LACT: 34070 1196 3.5 1188 3.5 KG
Progeny Data: 0EX 1VG 1GP 0G 0F
2 DAUS ME AVG: 14679 487 3.3 460 3.1
AVG BCA: M277 F250 P278

The information herein contained is based upon the records maintained by the Holstein Association of Canada. The accuracy of the information is not guaranteed and is subject to correction according to the Association's By-laws.

L'information contenue dans la pr sente est fond e sur les registres tenus   jour par l'Association Holstein du Canada. L'exactitude de cette information n'est pas garantie et est assujettie   des corrections conform ment aux Statuts de l'Association.

0200HO10425

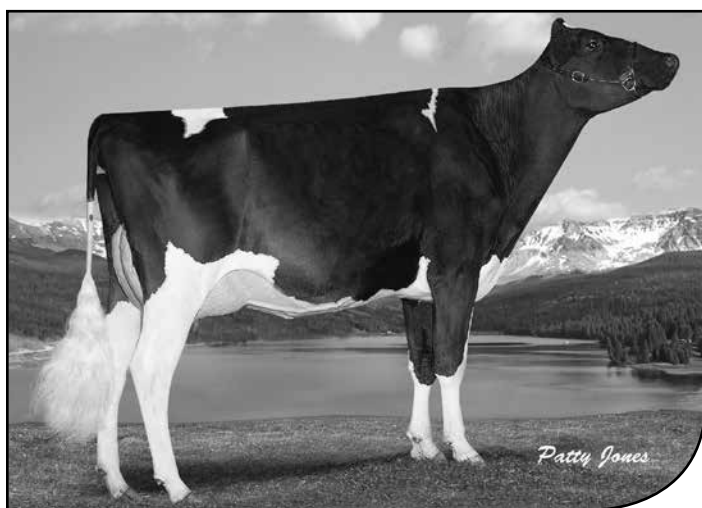
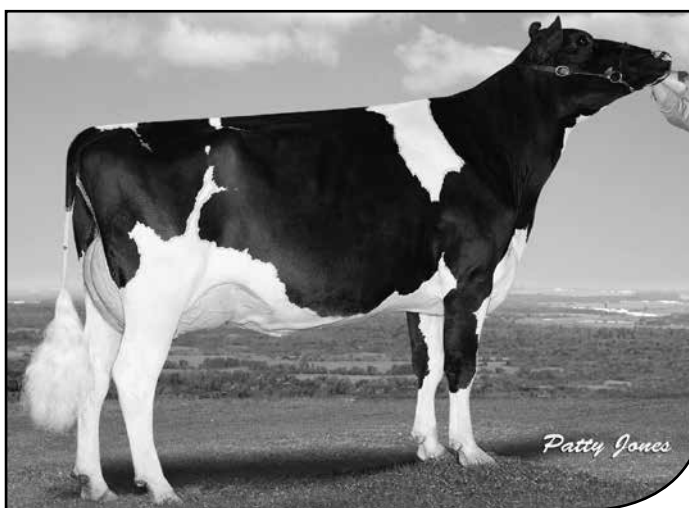
COMESTAR **NICETY**

DEDUCTIVE X ALTAKOOL X G W ATWOOD


Breeder(s)/Éleveur(s): Comestar Holstein, Victoriaville, QC

 **Robot Ready**TM

- De-Su Oman 6121, his 4th dam, is the main foundation cow behind De-Su's most envied genomic successes
- De-Su Oman 6121 est à l'origine du succès génomique remporté par De-Su
- His dam, is a maternal sister to the high type Genomax sire Lookout Pesce Snowy
- Sa mère est une sœur maternelle du taureau Genomax aux solides indices en conformation, Lookout Pesce Snowy


 2nd DAM/GMM:
DE-SU 9842-ET VG86-2YR CAN 2*

 DAM/MÈRE:
MS LOOKOUT PESCE NISSA-ET VG-2YR CAN
**CAN - GPA/MPG
 08/2015**

Milk/Lait kg	865
Fat/Gras kg	77
Fat/Gras %	+.45
Prot. kg	58
Prot. %	+.27
SCS/CS	2.66
Conformation	11
LPI/IPV	3164



COMESTAR NICETY PB 0200HO10425
HOCANM109106630 *CVF*RDF*BYF*BLF*DPF*CNF ET B:2014 Jun 29
CAN-GPA Aug*15 71%Rel GPA LPI+3164/67%
KG M+865/67% F+77/97% %F+0.45 PRO\$
SCS 2.66 P+58/96% %P+0.27 +2159
CAN-GPA Aug*15 68%Rel Conf+11
MS+11 F&L+14 DS+1 R-4

Herd Life/Dur e de vie 112
Daughter Fertility/Fertilit  des filles 104
Calving Ability/Aptitude au v lage 109

Prepared for:
THE SEMEX ALLIANCE
GUELPH ON
Tel: 519-821-5060

4th-7th Maternal Dam
DE-SU OMAN 6121-ET VG-86-2YR-USA 7*
DE-SU BW MARSHAL GEORGIA-ET EX-90-2E-USA
DE-SU PATRON GOLD-ET EX-90-2E-USA
KERNDTWAY LEAD GRETCHEN-ET VG-87-6YR-USA

CLAYNOOK DEDUCTIVE PB
HOCANM11595003 *CVF*RDF*BYF*BLF*DPF*CNF ET
CAN-GPA Aug*15 75%Rel GPA LPI+3062/71%
KG M+1116/78% F+69/94% %F+0.28 PRO\$
SCS 2.71 P+45/87% %P+0.07 +2056
CAN-GPA Aug*15 72%Rel Conf+12
MS+13 F&L+9 DS+2 R+1

AMIGHETTI NUMERO UNO ET PB
HOITAM17990915143 *CVF*BYF*BLF*DPF ET
EX-90-3YR-HUN ST'15
CAN-GEBV Aug*15 95%Rel GLPI+3148/89%
KG M+16 F+70 %F+0.69 P+23 %P+0.20
CAN-GEBV Aug*15 92%Rel Conf+14

OCD PLANET DIAMOND-ET PB
HO840F3004202039 *CVF*BYF*BLF*DPF ET
VG-88-6YR-CAN 4*(0/24)
02-04 305 11869 466 3.9 379 3.2
365 13998 550 3.9 454 3.2
BCA 292 309 294
2 LACT: 35168 1393 4.0 1145 3.3 KG

LONG-LANGS OMAN OMAN-ET PB
HOUSAM135746776 *CVF*BYF*BLF ET
VG-85-4YR-USA GM'10 EXTRA'12
AMIGHETTI SHOTTLE AVE PB
HOITAF17990346074 ET
VG-89-ITA
ENSENADA TABOO PLANET-ET PB
HOUSAM60597003 *CVF*RDF*BYF*BLF*DPF ET
EX-90-4YR-USA GM'11 EXTRA'12
MISS ELEGANT DELIGHT-ET PB
HOUSAF63238366 ET
VG-88-2YR-USA DOM 1*(0/9)

MS LOOKOUT PESCE NISSA-ET PB
HOUSAF71302860 *CVF*BYF*BLF*DPF ET B:2012 Mar
VG-85-2YR-CAN
MS:86(FA:9 RAH:5 RAW:5) F&L:82 DS:87 R:85
CAN-GEBV Aug*15 75%Rel GLPI+2937/71%
KG M+789/80% F+69/98% %F+0.43 PRO\$
SCS 2.71 P+56/99% %P+0.30 +1764
CAN-GEBV Aug*15 72%Rel Conf+9/94%
MS+7 F&L+11 DS+7 R+0
02-05 305 12458 611 4.9 443 3.6
BCA 297 389 331
1 LACT: 12458 611 4.9 443 3.6 KG
AVG BCA: M297(+41) F389(+106) P331(+74)
1 Superior Lactation

HAMMER-CREEK ALTAKOOL-ET PB
HOUSAM66760497 *CVF*BYF*BLF*DPF ET
GMACE Aug*15 87%Rel GMLPI+2761/83%
KG M+956 F+22 %F-0.14 P+44 %P+0.13
GMACE Aug*15 85%Rel Conf+8

DE-SU 9842-ET PB
HOUSAF66756919 *BYF ET
VG-86-2YR-CAN 2*(0/10)
02-07 305 10194 510 5.0 354 3.5
365 12382 615 5.0 443 3.6
BCA 229 307 251
1 LACT: 20314 1052 5.2 783 3.9 KG
AVG BCA: M229 F307 P251
Progeny Data: 0EX 2VG 4GP 2G 0F
7 DAUS ME AVG: 13096 573 4.4 452 3.5
AVG BCA: M247 F293 P273

LONG-LANGS OMAN OMAN-ET PB
HOUSAM135746776 *CVF*BYF*BLF ET
VG-85-4YR-USA GM'10 EXTRA'12
HAMMER-CREEK G KRISTINA-ET PB
HOUSAF62738958 ET
VG-86-4YR-USA DOM
MAPLE-DOWNS-I G WATWOOD PB
HOCANM8956379 *CVF*RDF*BYF*BLF*DPF ET
EX-90-4YR-USA ST'12
DE-SU 7051-ET PB
HOUSAF62720609 ET
EX-90-6YR-USA DOM
06-07 305 15726 593 3.8 491 3.1
365 17917 674 3.8 569 3.2
3 LACT: 58278 2222 3.8 1859 3.2 KG
Progeny Data: 0EX 1VG 0GP 0G 0F
1 DAUS ME AVG: 12121 599 4.9 415 3.4
AVG BCA: M229 F307 P251

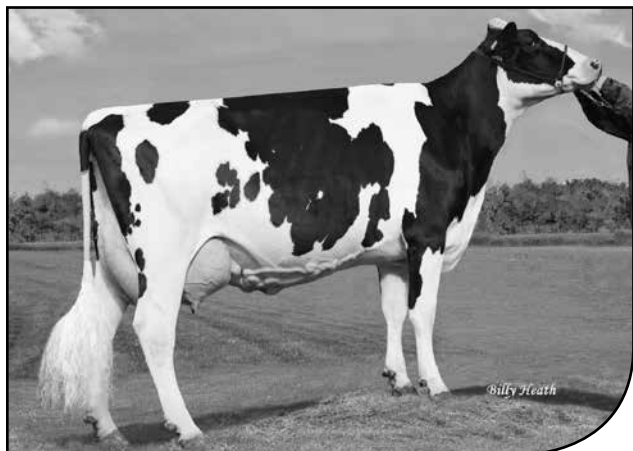
The information herein contained is based upon the records maintained by the Holstein Association of Canada. The accuracy of the information is not guaranteed and is subject to correction according to the Association's By-laws.

L'information contenue dans la pr sente est fond e sur les registres tenus   jour par l'Association Holstein du Canada. L'exactitude de cette information n'est pas garantie et est assujettie   des corrections conform ment aux Statuts de l'Association.

0200HO10450

LADYS-MANOR **COMEOVER-ET**

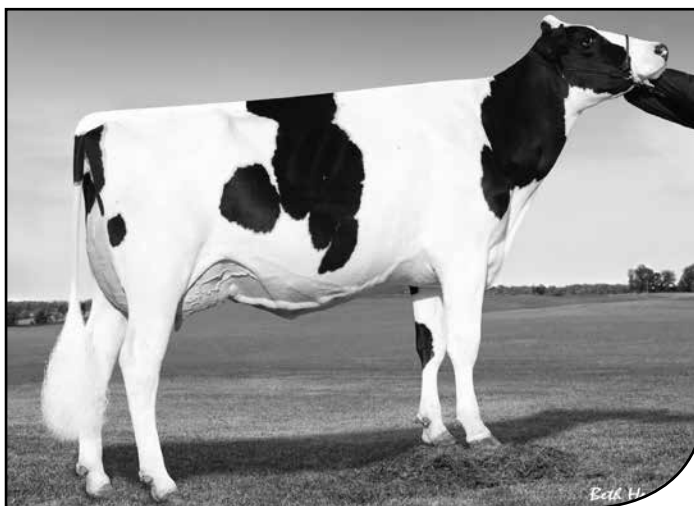
LANCOME X DORCY X AUDEN



2nd DAM/GMM:
LADYS-MANOR AUDEN ODA-ET EX91-4YR USA

Breeder(s)/Éleveur(s): Ladys Manor LLC, Monkton, MD, USA

- The dam is one of the best bull mothers of her time, with popular sons like Olympian "RC", and the 2 Immunity Plus superstars, Octoberfest and Doorsopen
- DORCY Oda est parmi les meilleures mères à taureaux de sa génération, elle a pour fils les populaires Olympian « RC » ainsi que les 2 vedettes Immunité Plus, Octoberfest et Doorsopen
- COMEOVER has it all: high production, superb mammary system with sound health traits
- COMEOVER offre des indices élevés pour la production, le système mammaire ainsi que des caractères de santé favorables



DAM/MÈRE:
LADYS-MANOR DORCY ODA VG88-2YR USA

**CAN - GPA/MPG
08/2015**

Milk/Lait kg	1711
Fat/Gras kg	82
Fat/Gras %	+.19
Prot. kg	69
Prot. %	+.11
SCS/CS	2.66
Conformation	9
LPI/IPV	3085



LADYS-MANOR COME-OVER-ET PB 0200HO10450
 HO840M3125521754 *CVF*RDF*BYF*BLF*DPF ET B:2014 Jun 25
 CAN-GPA Aug*15 69%Rel GPA LPI+3085/66%
 KG M+1711/95% F+82/98% %F+0.19 PRO\$
 SCS 2.66 P+69/98% %P+0.11 +2284
 CAN-GPA Aug*15 67%Rel Conf+9
 MS+11 F&L+7 DS+2 R+3

Prepared for:
 THE SEMEX ALLIANCE
 GUELPH ON
 Tel: 519-821-5060

4th-7th Maternal Dam
 LADYS-MANOR TOPAL EX-90-7YR-USA
 LADYS-MANOR STAR OPAL EX-94-3E-USA
 LADYS-MANOR STAR ONYX-ET EX-93-2E-USA
 LADYS-MANOR JEM OF JEWELS-ET VG-88-4YR-USA

Herd Life/Dur e de vie 110
 Daughter Fertility/Fertilit  des filles 103
 Calving Ability/Aptitude au v lage 103

KELLERCREST LANCOME-ET PB
 HOUSAM71164339 *CVF*BYF*BLF*DPF ET
 CAN-GPA Aug*15 75%Rel GPA LPI+2921/71%
 KG M+1461/90% F+60/90% %F+0.07 PRO\$
 SCS 2.86 P+69/98% %P+0.19 +1945
 CAN-GPA Aug*15 73%Rel Conf+9
 MS+9 F&L+8 DS+3 R+0

GENERATIONS EPIC PB
 HOCANM11104016 *CVF*BYF*BLF*DPF ET
 EX-94-CAN ST'15
 CAN-GEBV Aug*15 98%Rel GLPI+2795/93%
 KG M+1411 F+30 %F-0.17 P+47 %P+0.01
 CAN-GEBV Aug*15 97%Rel Conf+13

KELLERCREST MANOMAN LACY-ET PB
 HOUSAF69436243 ET
 VG-85-2YR-USA
 02-06 305 11716 442 3.8 398 3.4
 1 LACT: 11716 442 3.8 398 3.4 KG

CHARLESDALE SUPERSTITION-ET PB
 HOUSAM62065919 *CVF*RDF*BYF*BLF*DPF ET
 GM'12

TRAMILDA-N BAXTER EMILY-ET PB
 HOUSAF139232811 ET
 VG-85-2YR-CAN 7*(0/36)

LONG-LANGS OMAN OMAN-ET PB
 HOUSAM135746776 *CVF*BYF*BLF ET
 VG-85-4YR-USA GM'10 EXTRA'12

KELLERCREST TOYSTORY LADY PB
 HOUSAF63657364 *CVF*BLF
 VG-87-3YR-USA DOM

LADYS-MANOR DORCY ODA PB
 HOUSAF69547657 *BYF B:2010 Jun 27
 VG-88-2YR-USA
 GMACE Aug*15 75%Rel GMLPI+2966/71%
 KG M+1432/96% F+78/99% %F+0.25 PRO\$
 SCS 2.57 P+48/97% %P+0.02 +2011
 GMACE Aug*15 73%Rel Conf+9/94%
 MS+10 F&L+8 DS+1 R+3
 02-00 305 12247 502 4.1 403 3.3
 365 14483 598 4.1 478 3.3
 1 LACT: 17545 732 4.2 582 3.3 KG

COYNE-FARMS DORCY-ET PB
 HOUSAM139005002 *BYC*CVF*BLF ET
 CAN-GEBV Aug*15 95%Rel GLPI+2894/91%
 KG M+1512 F+34 %F-0.19 P+44 %P-0.05
 CAN-GEBV Aug*15 93%Rel Conf+11

LADYS-MANOR AUDEN ODA-ET PB
 HOUSAF65756726 ET
 EX-91-4YR-USA
 02-00 305 10864 440 4.1 339 3.1
 03-01 305 13871 584 4.2 445 3.2
 04-03 305 15159 618 4.1 490 3.2
 365 17541 714 4.1 573 3.3
 3 LACT: 45518 1861 4.1 1457 3.2 KG

SANDY-VALLEY BOLTON-ET PB
 HOUSAM131823833 *BYC*CVF*BLF ET
 EX-90-5YR-USA GM'10 EXTRA'10

COYNE-FARMS BRET DAFFERS-ET PB
 HOUSAF61319723 *CVC ET
 EX-91-5YR-USA DOM

LADYS-MANOR AUDEN-ET PB
 HOUSAM133272606 *CVF*BYF*BLF*MFF ET

LADYS-MANOR OUT TOPAZ PB
 HOUSAF61801750
 EX-91-2E-USA
 04-07 304 13925 579 4.2 442 3.2
 6 LACT: 91503 3436 3.8 2856 3.1 KG

The information herein contained is based upon the records maintained by the Holstein Association of Canada. The accuracy of the information is not guaranteed and is subject to correction according to the Association's By-laws.

L'information contenue dans la pr sente est fond e sur les registres tenus   jour par l'Association Holstein du Canada. L'exactitude de cette information n'est pas garantie et est assujettie   des corrections conform ment aux Statuts de l'Association.

0200HO10366

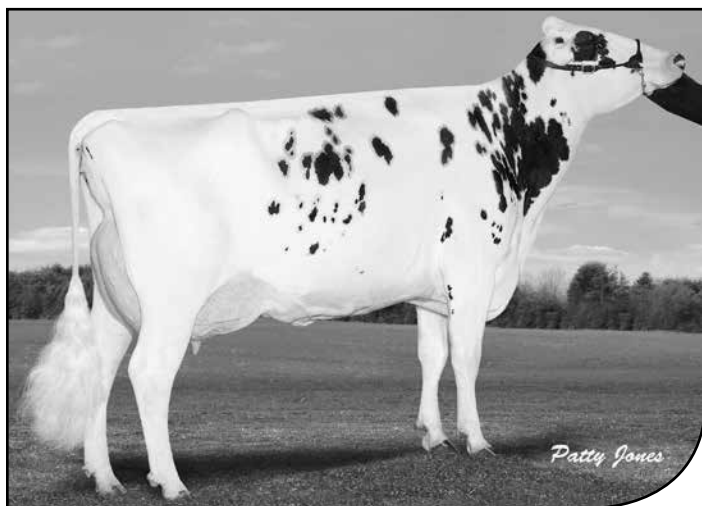
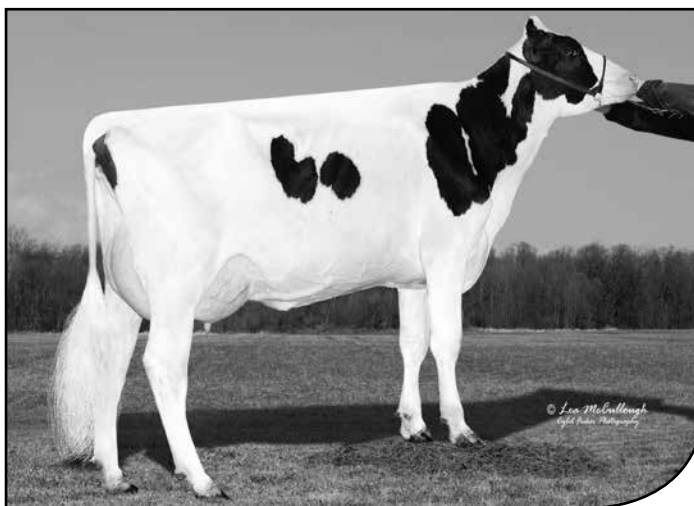
BENNER **BARDO**

FLAME X MOGUL X ALTABAXTER


Breeder(s)/Éleveur(s): Benner Holsteins Ltd., Steinbach, MB

 **Robot Ready**TM

- Tracing back to the Gypsy Grands, the reliability and pedigree that everyone can trust
- With a projection of over 15,000 kg and scored VG86 his dam is making a big name for herself at Benner
- Remontant à la famille des Gypsy Grands, une lignée avec une grande fiabilité
- Avec une projection de plus de 15 000 kg et une classification TB86, sa mère se distingue parmi les meilleures chez Benner


 3rd DAM/AGMM:
GEN-I-BEQ SHOTTLE BOMBI EX94-2E USA 20*

 DAM/MÈRE:
BENNER MOGUL BOBBY SUE VG86-2YR CAN
**CAN - GPA/MPG
 08/2015**

Milk/Lait kg	776
Fat/Gras kg	107
Fat/Gras %	+.76
Prot. kg	57
Prot. %	+.28
SCS/CS	2.87
Conformation	14
LPI/IPV	3311



BENNER BARDO PB 0200HO10366
 HOCANM11951553 *CVF*RDF*BYF*BLF*DPF*CNF ET B:2014 Apr 13
 CAN-GPA Aug*15 70%Rel GPA LPI+3311/66%
 KG M+776/63% F+107/99% %F+0.76 PRO\$
 SCS 2.87 P+57/95% %P+0.28 +2255
 CAN-GPA Aug*15 68%Rel Conf+14
 MS+12 F&L+12 DS+8 R+5

Herd Life/Durée de vie 110
 Daughter Fertility/Fertilité des filles 108
 Calving Ability/Aptitude au vêlage 104

Prepared for:
 THE SEMEX ALLIANCE
 GUELPH ON
 Tel: 519-821-5060

4th-6th Maternal Dam
 GEN-I-BEQ CHAMPION BAMBI EX-90-CAN 4*
 BRAEDALE BALER TWINE VG-86-2YR-CAN 33*
 BRAEDALE GYPSY GRAND VG-88-5YR-CAN 37*

VIEUXSAULE FLAME-ET PB
 HOUSAM71699265 *CVF*BYF*BLF ET
 VG-87-2YR-CAN
 F&L:87 DS:88 R:85
 CAN-GPA Aug*15 75%Rel GPA LPI+3150/71%
 KG M+160/30% F+87/98% %F+0.79 PRO\$
 SCS 2.73 P+39/81% %P+0.30 +2112
 CAN-GPA Aug*15 72%Rel Conf+12
 MS+12 F&L+11 DS+4 R+6

BENNER MOGUL BOBBY SUE PB
 HOCANF11621754 ET B:2012 Oct 10
 VG-86-2YR-CAN
 MS:85 (FA:7 RAH:7 RAW:7) F&L:86 DS:87 R:87
 CAN-GEBV Aug*15 77%Rel GLPI+3163/72%
 KG M+1687/98% F+116/99% %F+0.53 PRO\$
 SCS 2.99 P+66/99% %P+0.12 +2161
 CAN-GEBV Aug*15 74%Rel Conf+12/98%
 MS+10 F&L+12 DS+9 R+4
 02-03 P199 15612 737 4.7 541 3.5
 PBCA 376 482 413
 1 LACT: 10628 508 4.8 368 3.5 KG
 AVG BCA: M376 F482 P413

AMIGHETTI NUMERO UNO ET PB
 HOITAM17990915143 *CVF*BYF*BLF*DPF ET
 EX-90-3YR-HUN ST'15
 CAN-GEBV Aug*15 95%Rel GLPI+3148/89%
 KG M+16 F+70 %F+0.69 P+23 %P+0.20
 CAN-GEBV Aug*15 92%Rel Conf+14

VIEUXSAULE FREDDIE FELICIA PB
 HOCANF106759895 *BYF ET
 VG-85-2YR-CAN
 02-06 305 10953 666 6.1 432 3.9
 336 12176 729 6.0 486 4.0
 BCA 254 419 320
 2 LACT: 15128 911 6.0 601 4.0 KG

MOUNTFIELD SSI DCY MOGUL-ET PB
 HO840M3006972816 *CVF*RDF*BYF*BLF*DPF ET
 EXTRA'15
 CAN-GEBV Aug*15 95%Rel GLPI+3085/87%
 KG M+1543 F+97 %F+0.40 P+57 %P+0.06
 CAN-GEBV Aug*15 91%Rel Conf+12

MAPEL WOOD BAXTER BETHANY PB
 HOCANF9696511 *BRC ET
 VG-85-2YR-CAN 4*(4/16)
 02-03 305 15785 735 4.7 545 3.5
 365 18745 871 4.6 647 3.5
 BCA 394 497 429
 1 LACT: 23817 1122 4.7 821 3.4 KG
 AVG BCA: M394(+189) F497(+295) P429(+225)
 1 Superior Lactation
 Progeny Data: 0EX 8VG 9GP 1G 0F
 18 DAUS ME AVG: 14820 661 4.5 467 3.2
 AVG BCA: M280 F339 P283

LONG-LANGS OMAN OMAN-ET PB
 HOUSAM135746776 *CVF*BYF*BLF ET
 VG-85-4YR-USA GM'10 EXTRA'12

AMIGHETTI SHOTTLE AVE PB
 HOITAF17990346074 ET
 VG-89-ITA

BADGER-BLUFF FANNY FREDDIE PB
 HOUSAM60996956 *CVF*BYF*BLF
 SP'13

VIEUXSAULE BOLTON HALIA PB
 HOCANF104553604 ET
 VG-87-2YR-CAN 8*(0/41)

COYNE-FARMS DORCY-ET PB
 HOUSAM139005002 *BYC*CVF*BLF ET

MOUNTFIELD MARSH MAXINE-ET PB
 HOUSAF62784081 ET
 VG-88-2YR-USA DOM

EMERALD-ACR-SA T-BAXTER PB
 HOUSAM132973942 *CVF*BRC*BYF*BLF*DPF
 EX-91-CAN EXTRA'10

GEN-I-BEQ SHOTTLE BOMBI PB
 HOCANF102438051 *POF ET
 EX-94-2E-USA 20*(4/97)
 05-10 305 21900 827 3.8 712 3.3
 365 25079 920 3.7 825 3.3
 2 LACT: 48391 2044 4.2 1634 3.4 KG
 AVG BCA: M311(+75) F413(+153) P331(+88)
 1 Superior Lactation
 Progeny Data: 2EX 20VG 6GP 0G 0F
 27 DAUS ME AVG: 13360 541 4.0 420 3.1
 AVG BCA: M252 F277 P254

The information herein contained is based upon the records maintained by the Holstein Association of Canada. The accuracy of the information is not guaranteed and is subject to correction according to the Association's By-laws.

L'information contenue dans la présente est fondée sur les registres tenus à jour par l'Association Holstein du Canada. L'exactitude de cette information n'est pas garantie et est assujettie à des corrections conformément aux Statuts de l'Association.

0200HO10348

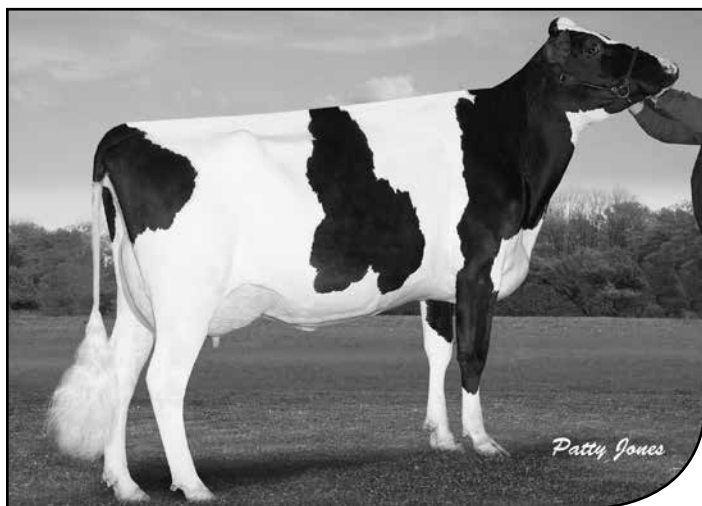
CLAYNOOK DENIM

FLAME X SNOWMAN X PLANET

Breeder(s)/Éleveur(s): Claynook Farms Ltd., New Hamburg, ON

 **Show Time**TM


- A tremendous all-around bull with a great potential to improve type (DGV +18)
- Un taureau remarquable à tous les égards, offrant un potentiel élevé pour améliorer la conformation (VGD +18)
- His VG88 4* granddam is emerging as a very impressive brood cow: 100% GP or better for her first 25 milking daughters, including 17 VG at 2 years of age
- Sa grand-mère, classifiée TB88 4*, se démarque de façon impressionnante comme vache souche; ses 25 premières filles en lactation sont classifiées 100 % BP ou mieux, dont 17 TB à l'âge de 2 ans



2nd DAM/GMM:
OCD PLANET DIAMOND-ET VG88-6YR CAN 4*



DAM/MÈRE:
CLAYNOOK DORINDA SNOWMAN VG86-2YR CAN

**CAN - GPA/MPG
 08/2015**

Milk/Lait kg	1263
Fat/Gras kg	78
Fat/Gras %	+.33
Prot. kg	53
Prot. %	+.11
SCS/CS	2.61
Conformation	16
LPI/IPV	3249



CLAYNOOK DENIM PB 0200HO10348
 HOCANM11993494 *CVF*RDF*BYF*BLF*DPF*CNF ET B:2014 Apr 27
 CAN-GPA Aug*15 72%Rel GPA LPI+3249/68%
 KG M+1263/84% F+78/97% %F+0.33 PRO\$
 SCS 2.61 P+53/93% %P+0.11 +2193
 CAN-GPA Aug*15 70%Rel Conf+16
 MS+15 F&L+12 DS+8 R+6

Prepared for:
 THE SEMEX ALLIANCE
 GUELPH ON
 Tel: 519-821-5060

4th-6th Maternal Dam
 WINDSOR-MANOR Z-DELIGHT-ET EX-93-2E-USA 4*
 WINDSOR-MANOR RUD ZIP EX-95-4E-USA 1*
 WINDSOR-MANOR JOLT ZIPPY EX-90-3E-USA

Herd Life/Durée de vie 111
 Daughter Fertility/Fertilité des filles 105
 Calving Ability/Aptitude au vêlage 104

VIEUXSAULE FLAME-ET PB
 HOUSAM71699265 *CVF*BYF*BLF ET
 VG-87-2YR-CAN
 F&L:87 DS:88 R:85
 CAN-GPA Aug*15 75%Rel GPA LPI+3150/71%
 KG M+160/30% F+87/98% %F+0.79 PRO\$
 SCS 2.73 P+39/81% %P+0.30 +2112
 CAN-GPA Aug*15 72%Rel Conf+12
 MS+12 F&L+11 DS+4 R+6

AMIGHETTI NUMERO UNO ET PB
 HOITAM17990915143 *CVF*BYF*BLF*DPF ET
 EX-90-3YR-HUN ST'15
 CAN-GEBV Aug*15 95%Rel GLPI+3148/89%
 KG M+16 F+70 %F+0.69 P+23 %P+0.20
 CAN-GEBV Aug*15 92%Rel Conf+14

LONG-LANGS OMAN OMAN-ET PB
 HOUSAM135746776 *CVF*BYF*BLF ET
 VG-85-4YR-USA GM'10 EXTRA'12

AMIGHETTI SHOTTLE AVE PB
 HOITAF17990346074 ET
 VG-89-ITA

BADGER-BLUFF FANNY FREDDIE PB
 HOUSAM60996956 *CVF*BYF*BLF
 SP'13

VIEUXSAULE FREDDIE FELICIA PB
 HOCANF106759895 *BYF ET
 VG-85-2YR-CAN
 02-06 305 10953 666 6.1 432 3.9
 336 12176 729 6.0 486 4.0
 BCA 254 419 320
 2 LACT: 15128 911 6.0 601 4.0 KG

VIEUXSAULE BOLTON HALIA PB
 HOCANF104553604 ET
 VG-87-2YR-CAN 8*(0/41)

CLAYNOOK DORINDA SNOWMAN PB
 HOCANF11595087 ET B:2012 Sep 26
 VG-86-2YR-CAN
 MS:88 (FA:7 RAH:9 RAW:8) F&L:84 DS:86 R:88
 CAN-GEBV Aug*15 77%Rel GLPI+2955/73%
 KG M+2127/99% F+69/98% %F-0.04 PRO\$
 SCS 2.79 P+70/99% %P+0.01 +1993
 CAN-GEBV Aug*15 75%Rel Conf+11/97%
 MS+11 F&L+9 DS+5 R+5
 02-02 P243 12786 490 3.8 415 3.2
 PBCA 306 316 312
 1 LACT: 10202 393 3.9 328 3.2 KG
 AVG BCA: M306 F316 P312

FLEVO GENETICS SNOWMAN PB
 HONLDM388965513 *CVF*BLF
 EXTRA'14
 CAN-GEBV Aug*15 98%Rel GLPI+2860/94%
 KG M+2338 F+64 %F-0.10 P+67 %P-0.08
 CAN-GEBV Aug*15 96%Rel Conf+12

O-BEE MANFRED JUSTICE-ET PB
 HOUSAM122358313 *CVF*RDF*BLF*DPF ET
 EX-94-7YR-USA SP'07 GM

BROEKS MBM ELSA PB
 HONLDF381135900 ET
 EX-90-5YR-NLD 4*(15/8)

OCD PLANET DIAMOND-ET PB
 HO840F3004202039 *CVF*BYF*BLF*DPF ET
 VG-88-6YR-CAN 4*(0/24)
 02-04 305 11869 466 3.9 379 3.2
 365 13998 550 3.9 454 3.2
 BCA 292 309 294
 06-00 P238 14859 566 3.8 452 3.0
 PBCA 269 279 263
 2 LACT: 35168 1393 4.0 1145 3.3 KG
 AVG BCA: M281(+32) F294(+31) P279(+34)
 1 Superior Lactation
 Progeny Data: 0EX 18VG 9GP 0G 0F
 25 DAUS ME AVG: 14493 585 4.0 457 3.2
 AVG BCA: M274 F300 P276

ENSENADA TABOO PLANET-ET PB
 HOUSAM60597003 *CVF*RDF*BYF*BLF*DPF ET
 EX-90-4YR-USA GM'11 EXTRA'12

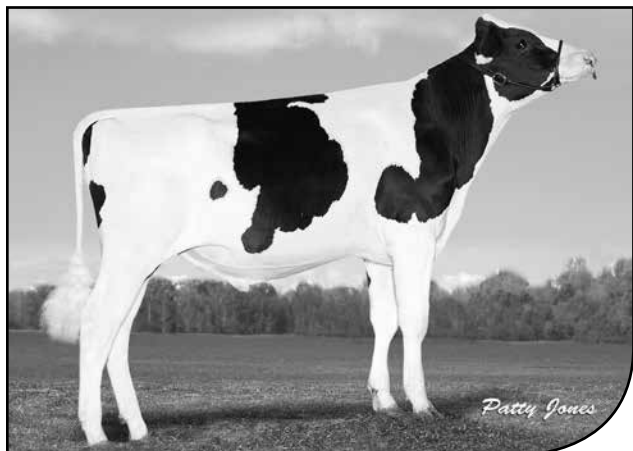
MISS ELEGANT DELIGHT-ET PB
 HOUSAF63238366 ET
 VG-88-2YR-USA DOM 1*(0/9)
 02-02 305 12633 435 3.4 388 3.1
 1 LACT: 24104 846 3.5 762 3.2 KG
 Progeny Data: 0EX 1VG 0GP 0G 0F
 2 DAUS ME AVG: 14079 539 3.8 430 3.1
 AVG BCA: M266 F276 P260

The information herein contained is based upon the records maintained by the Holstein Association of Canada. The accuracy of the information is not guaranteed and is subject to correction according to the Association's By-laws.

L'information contenue dans la présente est fondée sur les registres tenus à jour par l'Association Holstein du Canada. L'exactitude de cette information n'est pas garantie et est assujettie à des corrections conformément aux Statuts de l'Association.

0200HO10434

PELLERAT **SHERIFF**

EL BOMBERO X MOGUL X ALTABAXTER


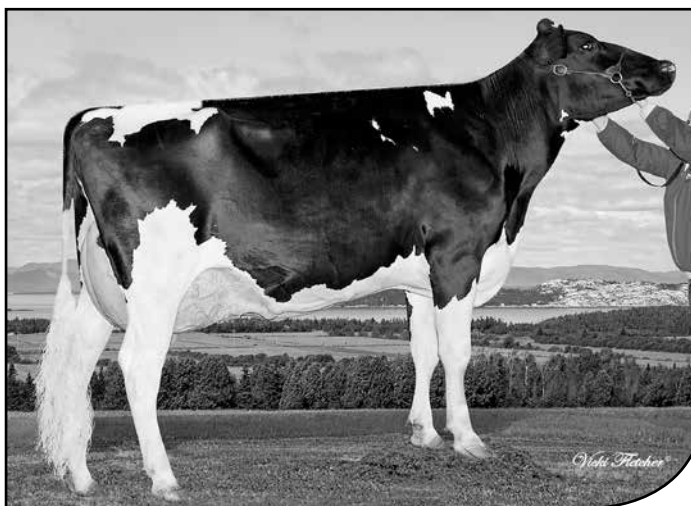
Breeder(s)/Éleveur(s): Ferme Pellerat inc., Saint-Roch-des-Aulnaies, QC



- This bull offers a most attractive genomic profile, thanks to his outstanding DGVs for type and mammary system (+16), Fat (+79 kg) and Health & Fertility traits
- Ce taureau affiche un profil génomique remarquable pour la conformation & le système mammaire (+16), le gras (+79) et les caractères de santé
- His VG-1YR dam is a 3rd generation descending straight from Canada's renowned star brood cow "Daurel EX 63"
- Sa mère, TB-1A, complète la troisième génération de vaches issue directement de la lignée de la vache souche Daurel, EX 63*



DAM/MÈRE:
PELLERAT MOGUL SHEILA VG-1YR CAN



2nd DAM/GMM:
PELLERAT BAXTER SARIE EX91-2E CAN 2*

**CAN - GPA/MPG
 08/2015**

Milk/Lait kg	1322
Fat/Gras kg	79
Fat/Gras %	+0.30
Prot. kg	48
Prot. %	+0.05
SCS/CS	2.54
Conformation	14
LPI/IPV	3165



PELLERAT SHERIFF PB 0200HO10434
 HOCANM109024521 *CVF*RDF*BYF*BLF*DPF*CNF ET B:2014 Aug 08
 CAN-GPA Aug*15 69%Rel GPA LPI+3165/64%
 KG M+1322/86% F+79/97% %F+0.30 PRO\$
 SCS 2.54 P+48/89% %P+0.05 +2274
 CAN-GPA Aug*15 66%Rel Conf+14
 MS+15 F&L+10 DS+6 R+3

Herd Life/Durée de vie 112
 Daughter Fertility/Fertilité des filles 103
 Calving Ability/Aptitude au vêlage 104

Prepared for:
 THE SEMEX ALLIANCE
 GUELPH ON
 Tel: 519-821-5060

4th-7th Maternal Dam
 LA PRESENTATION DAUREL EX-CAN 63*
 NAKINA BLACKSTAR JENNY EX-CAN 12*
 DE LA PRESENTATION MONA ET VG-88-6YR-CAN 11*
 DE LA PRESENTATION ONELLE VG-86-4YR-CAN 13*

RICHMOND-FD EL BOMBERO-ET PB
 HOUSAM71637328 *CVF*RDF*BYF*BLF*DPF*CNF ET
 VG-86-1YR-CAN
 F&L:86 DS:87 R:86
 CAN-GPA Aug*15 75%Rel GPA LPI+3108/71%
 KG M+1470/90% F+82/98% %F+0.28 PRO\$
 SCS 2.68 P+52/93% %P+0.05 +2213
 CAN-GPA Aug*15 73%Rel Conf+11
 MS+11 F&L+8 DS+6 R+4

AMIGHETTI NUMERO UNO ET PB
 HOITAM17990915143 *CVF*BYF*BLF*DPF ET
 EX-90-3YR-HUN ST'15
 CAN-GEBV Aug*15 95%Rel GLPI+3148/89%
 KG M+16 F+70 %F+0.69 P+23 %P+0.20
 CAN-GEBV Aug*15 92%Rel Conf+14

RICHMOND-FD S BARBARA-ET PB
 HOUSAF69305043 *BYF ET
 VG-87-2YR-USA
 02-04 233
 1 LACT: 9870 385 3.9 276 2.8 KG

LONG-LANGS OMAN OMAN-ET PB
 HOUSAM135746776 *CVF*BYF*BLF ET
 VG-85-4YR-USA GM'10 EXTRA'12

AMIGHETTI SHOTTLE AVE PB
 HOITAF17990346074 ET
 VG-89-ITA

CHARLESDALE SUPERSTITION-ET PB
 HOUSAM62065919 *CVF*RDF*BYF*BLF*DPF ET
 GM'12

RICHMOND-FD BARBIE PB
 HOUSAF65722644 *BYF
 EX-90-4YR-USA

PELLERAT MOGUL SHEILA PB
 HOCANF107945295 ET B:2012 Dec 01
 VG-85-1YR-CAN
 MS:86 (FA:8 RAH:7 RAW:7) F&L:85 DS:85 R:84
 CAN-GEBV Aug*15 74%Rel GLPI+2967/70%
 KG M+1023/88% F+74/98% %F+0.35 PRO\$
 SCS 2.87 P+40/94% %P+0.05 +1831
 CAN-GEBV Aug*15 72%Rel Conf+12/98%
 MS+14 F&L+10 DS+5 R+3

01-09	305	9169	359	3.9	299	3.3
	318	9494	371	3.9	310	3.3
	BCA	244	255		249	

1 LACT: 9494 371 3.9 310 3.3 KG
 AVG BCA: M244(+13) F255(+13) P249(+16)

MOUNTFIELD SSI DCY MOGUL-ET PB
 HO840M3006972816 *CVF*RDF*BYF*BLF*DPF ET
 EXTRA'15
 CAN-GEBV Aug*15 95%Rel GLPI+3085/87%
 KG M+1543 F+97 %F+0.40 P+57 %P+0.06
 CAN-GEBV Aug*15 91%Rel Conf+12

PELLERAT BAXTER SARIE PB
 HOCANF105585417
 EX-91-2E-CAN 2*(0/10)

01-11	305	11383	467	4.1	338	3.0
	BCA	284	311		262	
04-01	305	14187	617	4.3	430	3.0
	BCA	276	325		264	
05-02	305	15169	656	4.3	494	3.3
	365	17586	759	4.3	582	3.3
	BCA	285	335		298	

3 LACT: 52526 2257 4.3 1697 3.2 KG
 AVG BCA: M282(+75) F324(+97) P275(+63)
 1 Superior Lactation
 3RD 5-YR 2014 KAMOURASKA
 Progeny Data: 0EX 5VG 8GP 2G 0F
 16 DAUS ME AVG: 13205 500 3.8 403 3.1
 AVG BCA: M249 F256 P243

COYNE-FARMS DORCY-ET PB
 HOUSAM139005002 *BYC*CVF*BLF ET

MOUNTFIELD MARSH MAXINE-ET PB
 HOUSAF62784081 ET
 VG-88-2YR-USA DOM

EMERALD-ACR-SA T-BAXTER PB
 HOUSAM132973942 *CVF*BRC*BYF*BLF*DPF
 EX-91-CAN EXTRA'10

LA PRESENTATION GOLDWYN DAHLIA PB
 HOCANF103498165 ET
 VG-86-2YR-CAN 7*(10/25)

02-07	305	12279	530	4.3	411	3.3
	365	14291	622	4.4	489	3.4
	BCA	279	321		294	

2 LACT: 28013 1235 4.4 970 3.5 KG
 AVG BCA: M237(+12) F275(+33) P248(+16)
 1 Superior Lactation
 Progeny Data: 3EX 5VG 11GP 1G 0F
 19 DAUS ME AVG: 11575 494 4.3 388 3.4
 AVG BCA: M219 F253 P234

The information herein contained is based upon the records maintained by the Holstein Association of Canada. The accuracy of the information is not guaranteed and is subject to correction according to the Association's By-laws.

L'information contenue dans la présente est fondée sur les registres tenus à jour par l'Association Holstein du Canada. L'exactitude de cette information n'est pas garantie et est assujettie à des corrections conformément aux Statuts de l'Association.