

Premier™

Progeny Testing Program

Semen Sales: Young Sire availability can change on a daily basis. To reserve semen on a specific Young Sire on a first-come-first-serve basis or learn more about availability, call your local EastGen Regional Sales Representative.

Insemination Service: Keep this list by your phone. Call EastGen's dispatch to find out which Young Sires will be available today.

Vente de semence: La disponibilité de jeunes taureaux peut changer sur une base journalière. Pour réserver de la semence d'un taureau spécifique sur la base "premier arrivé, premier servi" ou pour en savoir plus sur la disponibilité, svp communiquer avec votre représentant de ventes.

Service d'insemination: Gardez cette liste à côté de votre téléphone. Téléphonnez au centre de commande d'EastGen pour connaître la liste des jeunes taureaux qui seront disponibles aujourd'hui.



Price: \$20

* Pricing before discount



BOFRAN FRANCO

0200HO10463 HOCANM108207279

SIRE: MR WELCOME HILL TANGO-ET
DAM: BOFRAN BREWMASTER FABY
MGS: MAPEL WOOD BREWMASTER

GPA LPI/IPV MPG +3177
M/L +2018 F/G +98 (+0.22) P +82 (+.13)
Conf. +12 SCS/CS 2.80
Calving Ability/Apt. au vêlage 103



Price: \$20

* Pricing before discount



BOLDIV ADMIRE

0200HO10316 HHOCANM11880954

SIRE: VIEUXSAULE FLAME-ET
DAM: VELTHUIS SG MOM ALESIA
MGS: LONG-LANGS OMAN OMAN-ET

GPA LPI/IPV MPG +3149
M/L +814 F/G +82 (+0.51) P +51 (+0.21)
Conf. +12 SCS/CS 2.70
Calving Ability/Apt. au vêlage 105



Price: \$20

* Pricing before discount

BERGITTE HONORY

0200HO10367 HOCANM108497662

SIRE: DE-SU 11236 BALISTO-ET
DAM: BERGITTE DEMPSEY HOTESSE
MGS: LIRR DREW DEMPSEY

GPA LPI/IPV MPG +3164
M/L +1055 F/G +76 (+0.37) P +79 (+.40)
Conf. +13 SCS/CS 2.67
Calving Ability/Apt. au vêlage 104



Price: \$20

* Pricing before discount



GEN-I-BEQ PRINCIPAL

0200HO10464 HOCANM108731331

SIRE: MR WELCOME TEACHER-ET
DAM: GEN-I-BEQ EPIC PALA
MGS: GENERATIONS EPIC

GPA LPI/IPV MPG +3205
M/L +2476 F/G +57 (-0.32) P +76 (-0.04)
Conf. +13 SCS/CS 2.49
Calving Ability/Apt. au vêlage 102



Price: \$20

* Pricing before discount




ZIMMER CROWNROYAL

0200HO10392 HOCANM12049349


SIRE: DE-SU MG DAVINCI 11288-ET
DAM: PINE-SHELTER CLAIRE WOOD-ET
MGS: MAPLE-DOWNS-I G W ATWOOD

GPA LPI/IPV MPG +3146
M/L +1551 F/G +105 (+0.47) P +64 (+0.12)
Conf. +14 SCS/CS 2.74
Calving Ability/Apt. au vêlage 103

GENOMAX



Price: \$20
* Pricing before discount



ROCKYMOUNTAIN LOCHINVAR

0200HO02938 HOCANM11445821

SIRE: AMIGHETTI NUMERO UNO ET
DAM: ROCKYMOUNTAIN SUPER LEITA
MGS: CHARLESDALE SUPERSTITION-ET

GPA LPI/IPV MPG +2941
M/L +811 F/G +51 (+.20) P +34 (+.07)
Conf. +12 SCS/CS 2.85
Calving Ability/Apt. au vêlage 105

December 7, 2015 / le 7 décembre 2015

Pedigree Pack Summary #043/Sommaire des généalogies

For further information/pour l'information go to www.eastgen.ca



0200HO10463

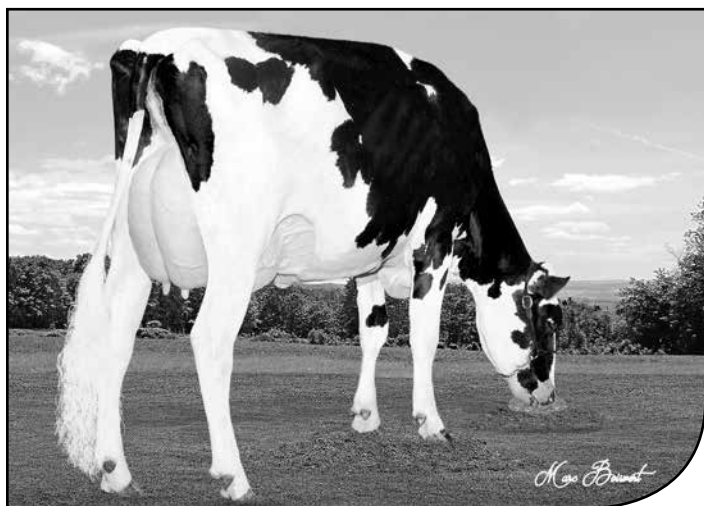
BOFRAN FRANCO

TANGO X BREWMASTER X MAN-O-MAN

Breeder(s)/Éleveur(s): Jean-François Beaudoin, Sainte-Marguerite, QC

 **Robot Ready**TM


- His VG86-2YR dam is the best GLPI Brewmaster daughter in Canada
- Classifiée TB86 à 2 ans, sa mère est la fille de Brewmaster la mieux indexée pour l'IPVG au Canada
- High DGVs for GPA LPI (+3293), Pro\$ (\$2644), production (+2275 kg M, +107 kg F, +92 kg P) and type (+13)
- Des VGD élevées pour l'IPV MPG (+3293), le Pro\$ (2644 \$), production (+2275 kg L, +107 kg G, +92 kg P) et la conformation (+13)


 DAM/MÈRE:
BOFRAN BREWMASTER FABY VG86-2YR CAN

 2nd DAM/GMM:
BOFRAN MAN O MAN FLORALIE VG88-4YR CAN
**CAN - GPA/MPG
 08/2015**

Milk/Lait kg	2018
Fat/Gras kg	98
Fat/Gras %	+0.22
Prot. kg	82
Prot. %	+0.13
SCS/CS	2.80
Conformation	12
LPI/IPV	3177



BOFRAN FRANCO PB 0200HO10463
HOCANM108207279 *CVF*RDF*BYF*BLF*DPF*CNF ETM B:2014 Jun 23
CAN-GPA Aug*15 71%Rel GPA LPI+3177/67%
KG M+2018/98% F+98/99% %F+0.22 PRO\$
SCS 2.80 P+82/99% %P+0.13 +2426
CAN-GPA Aug*15 68%Rel Conf+12
MS+9 F&L+9 DS+6 R+8

Herd Life/Dur e de vie 107
Daughter Fertility/Fertilit  des filles 103
Calving Ability/Aptitude au v lage 103

Prepared for:
THE SEMEX ALLIANCE
GUELPH ON
Tel: 519-821-5060

4th-7th Maternal Dam
BOFRAN ESTIMATE LOUANY VG-87-4YR-CAN 11*
COMESTAR LOUVE RUDOLPH VG-85-2YR-CAN 21*
COMESTAR LOU LINDY VG-88-4YR-CAN 2*
COMESTAR LAURIE SHEIK ET VG-88-5YR-CAN 23*

MR WELCOME HILL TANGO-ET PB
HOUSAM70750485 *CVF*BYF*BLF*DPF ET
CAN-GPA Aug*15 74%Rel GPA LPI+2677/70%
KG M+1722/95% F+44/78% %F-0.18 PRO\$
SCS 2.81 P+46/88% %P-0.09 +1689
CAN-GPA Aug*15 72%Rel Conf+9
MS+8 F&L+6 DS+1 R+7

LOTTA-HILL SHOTTLE 41-ET PB
HOUSAM62942427 *CVF*RDF*BYF*BLF ET
CAN-GEBV Aug*15 98%Rel GLPI+2427/95%
KG M+1362 F+35 %F-0.13 P+24 %P-0.17
CAN-GEBV Aug*15 97%Rel Conf+8

MS WELCOME COLBY TAYA-ET PB
HO840F3002918882 *BYF
VG-88-5YR-USA
01-10 305 15613 497 3.2 498 3.2
365 18788 616 3.3 605 3.2
1 LACT: 31035 1071 3.5 1056 3.4 KG

PICSTON SHOTTLE-ET PB
HOGBRM598172 *CVF*BYF*BLF*MFF ET
EX-96-7YR-GBR EXTRA'09 GM'10
LOTTA-HILL MARSHALL 3328 PB
HOUSAF60508495
GP-83-4YR-USA
SOLID-GOLD COLBY-ET PB
HOUSAM60697343 *CVF*RDF*BYF*BLF*DPF ET
EX-92-5YR-USA
CLEAR-ECHO FBI 1461-ET PB
HOUSAF62385350 *CVF*BLF ET
EX-90-4YR-USA

BOFRAN BREWMASTER FABY PB
HOCANF107699945 ET B:2012 Sep 05
VG-86-2YR-CAN
MS:85 (FA:6 RAH:7 RAW:8) F&L:86 DS:85 R:87
CAN-GEBV Aug*15 75%Rel GLPI+3176/71%
KG M+1340/94% F+118/99% %F+0.64 PRO\$
SCS 2.78 P+76/99% %P+0.29 +2304
CAN-GEBV Aug*15 72%Rel Conf+10/96%
MS+7 F&L+10 DS+7 R+8
02-04 P257 12089 630 5.2 444 3.7
PBCA 287 406 334
1 LACT: 10381 536 5.2 377 3.6 KG
AVG BCA: M287 F406 P334

MAPEL WOOD BREWMASTER PB
HOCANM11161715 *CVF*BYF*BLF*DPF ET
EX-95-CAN EXTRA'15
CAN-GEBV Aug*15 93%Rel GLPI+3199/87%
KG M+1257 F+136 %F+0.81 P+51 %P+0.08
CAN-GEBV Aug*15 89%Rel Conf+11
BOFRAN MAN O MAN FLORALIE PB
HOCANF105904337 ET
VG-88-4YR-CAN
02-04 305 12925 525 4.1 462 3.6
BCA 304 330 340
04-01 305 15248 691 4.5 555 3.6
365 17567 799 4.5 646 3.7
BCA 323 393 365
2 LACT: 41217 1791 4.3 1545 3.7 KG
AVG BCA: M314(+65) F362(+88) P353(+97)
2 Superior Lactations
Progeny Data: 0EX 3VG 0GP 0G 0F
3 DAUS ME AVG: 14609 703 4.8 501 3.4
AVG BCA: M276 F360 P303

SCHILLVIEW GARRETT-ET PB
HOUSAM52805710 *CVF*BYF*BLF ET
GM'10 SP'13
GEN-I-BEQ SHOTTLE BOMBI PB
HOCANF102438051 *POF ET
EX-94-2E-USA 20*(4/99)
LONG-LANGS OMAN OMAN-ET PB
HOUSAM135746776 *CVF*BYF*BLF ET
VG-85-4YR-USA GM'10 EXTRA'12
BOFRAN MORTY FLAVIE PB
HOCANF102913910
VG-86-3YR-CAN 3*(0/15)
02-07 305 10408 417 4.0 353 3.4
365 12021 477 4.0 411 3.4
BCA 249 266 263
2 LACT: 28326 1208 4.3 963 3.4 KG
AVG BCA: M239(-8) F275(+11) P249(-2)
Progeny Data: 0EX 3VG 6GP 2G 1F
8 DAUS ME AVG: 13097 544 4.2 420 3.2
AVG BCA: M247 F279 P254

The information herein contained is based upon the records maintained by the Holstein Association of Canada. The accuracy of the information is not guaranteed and is subject to correction according to the Association's By-laws.

L'information contenue dans la pr sente est fond e sur les registres tenus   jour par l'Association Holstein du Canada. L'exactitude de cette information n'est pas garantie et est assujettie   des corrections conform ment aux Statuts de l'Association.

0200HO10316

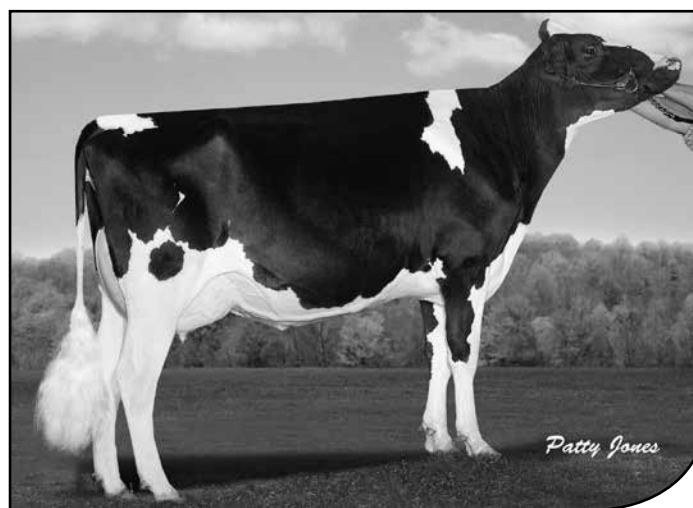
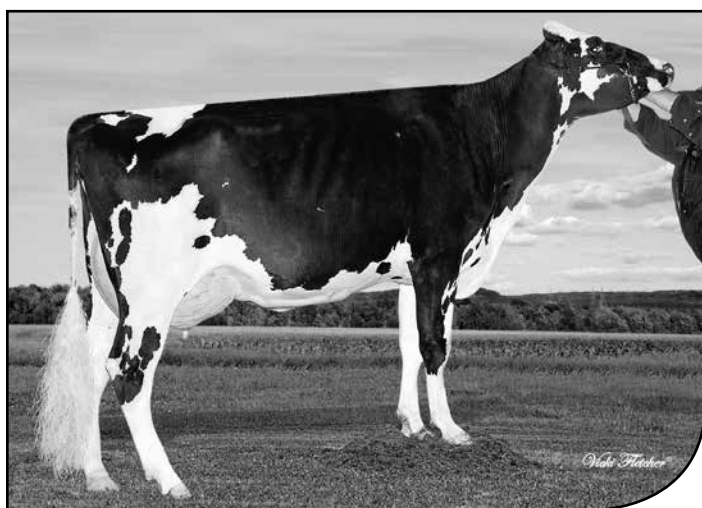
BOLDI V ADMIRE

FLAME X MAN-O-MAN X GOLDWYN


Breeder(s)/Éleveur(s): Boldi Inc., Vars, ON

 **Robot Ready**TM

- Two maternal sisters to Admire rank among the best 20 females on the GLPI list (August 2015)
- From the same family that produces the high type Genomax sire Boldi Andre
- Deux sœurs maternelles d'Admire figurent parmi les 20 meilleures femelles selon l'IPVG (août 2015)
- Issu de la même famille qui a produit le taureau Genomax Boldi Andre qui excelle en conformation


**CAN - GPA/MPG
08/2015**

Milk/Lait kg	814
Fat/Gras kg	82
Fat/Gras %	+51
Prot. kg	51
Prot. %	+21
SCS/CS	2.70
Conformation	12
LPI/IPV	3149

 MATERNAL SISTER TO/SŒUR MATERNELLE DE: ADMIRE
VELTHUIS SUPERSONIC ALYSSA VG87-2YR CAN

 DAM/MÈRE:
VELTHUIS SG MOM ALESIA VG87-2YR CAN 4*



BOLDI V ADMIRE PB 0200HO10316
 HOCANM11880954 *CVF*RDF*BYF*BLF*DPF*CNF ET B:2014 Apr 25
 CAN-GPA Aug*15 73%Rel GPA LPI+3149/69%
 KG M+814/64% F+82/98% %F+0.51 PRO\$
 SCS 2.70 P+51/92% %P+0.21 +2148
 CAN-GPA Aug*15 70%Rel Conf+12
 MS+12 F&L+12 DS+4 R+0

Herd Life/Durée de vie 112
 Daughter Fertility/Fertilité des filles 106
 Calving Ability/Aptitude au vêlage 105

Prepared for:
 THE SEMEX ALLIANCE
 GUELPH ON
 Tel: 519-821-5060

4th-6th Maternal Dam
 MD-DELIGHT STRM AMBERLEE-ET VG-88-3YR-USA
 MS KINGSTEAD CHIEF ADEEN-ET EX-94-2E-USA 8*
 AITKENBRAE STARBUCK ADA EX-94-2E-USA 4*

VIEUXSAULE FLAME-ET PB
 HOUSAM71699265 *CVF*BYF*BLF ET
 VG-87-2YR-CAN
 F&L:87 DS:88 R:85
 CAN-GPA Aug*15 75%Rel GPA LPI+3150/71%
 KG M+160/30% F+87/98% %F+0.79 PRO\$
 SCS 2.73 P+39/81% %P+0.30 +2112
 CAN-GPA Aug*15 72%Rel Conf+12
 MS+12 F&L+11 DS+4 R+6

VELTHUIS SG MOM ALESIA PB
 HOCANF11026708 ET B:2010 Aug 10
 VG-87-2YR-CAN 4*(0/20)
 MS:88 (FA:9 RAH:8 RAW:9) F&L:88 DS:86 R:87
 CAN-GEBV Aug*15 84%Rel GLPI+2887/78%
 KG M+1427/95% F+61/96% %F+0.08 PRO\$
 SCS 2.83 P+52/98% %P+0.04 +1793
 CAN-GEBV Aug*15 77%Rel Conf+12/98%
 MS+12 F&L+11 DS+4 R+0
 02-02 305 12367 458 3.7 380 3.1
 365 14068 521 3.7 442 3.1
 BCA 299 295 288
 04-02 305 13675 472 3.5 420 3.1
 BCA 268 247 259
 2 LACT: 35170 1306 3.7 1136 3.2 KG
 AVG BCA: M284(+53) F271(+32) P274(+46)
 Progeny Data: OEX 6VG 16GP 1G OF
 24 DAUS ME AVG: 12672 488 3.9 401 3.2
 AVG BCA: M239 F250 P243

AMIGHETTI NUMERO UNO ET PB
 HOITAM17990915143 *CVF*BYF*BLF*DPF ET
 EX-90-3YR-HUN ST'15
 CAN-GEBV Aug*15 95%Rel GLPI+3148/89%
 KG M+16 F+70 %F+0.69 P+23 %P+0.20
 CAN-GEBV Aug*15 92%Rel Conf+14
VIEUXSAULE FREDDIE FELICIA PB
 HOCANF106759895 *BYF ET
 VG-85-2YR-CAN
 02-06 305 10953 666 6.1 432 3.9
 336 12176 729 6.0 486 4.0
 BCA 254 419 320
 2 LACT: 15128 911 6.0 601 4.0 KG

LONG-LANGS OMAN OMAN-ET PB
 HOUSAM135746776 *CVF*BYF*BLF ET
 VG-85-4YR-USA GM'10 EXTRA'12
 CAN-GEBV Aug*15 99%Rel GLPI+2708/98%
 KG M+972 F+58 %F+0.22 P+69 %P+0.33
 CAN-GEBV Aug*15 99%Rel Conf+4
ALLYNDALE-I GOLDWYN ALBANY PB
 HOCANF8956395 *CVF*BLF ET
 VG-87-2YR-CAN 7*(3/32)
 02-03 305 13025 546 4.2 412 3.2
 365 15210 645 4.2 486 3.2
 BCA 331 371 324
 06-04 305 11202 507 4.5 366 3.3
 BCA 222 268 227
 2 LACT: 31738 1397 4.4 1056 3.3 KG
 AVG BCA: M277(+46) F320(+81) P276(+46)
 1 Superior Lactation
 Progeny Data: 1EX 13VG 2GP 2G OF
 18 DAUS ME AVG: 13573 554 4.1 426 3.1
 AVG BCA: M256 F284 P257

LONG-LANGS OMAN OMAN-ET PB
 HOUSAM135746776 *CVF*BYF*BLF ET
 VG-85-4YR-USA GM'10 EXTRA'12
AMIGHETTI SHOTTLE AVE PB
 HOITAF17990346074 ET
 VG-89-ITA
BADGER-BLUFF FANNY FREDDIE PB
 HOUSAM60996956 *CVF*BYF*BLF
 SP'13
VIEUXSAULE BOLTON HALIA PB
 HOCANF104553604 ET
 VG-87-2YR-CAN 8*(0/43)

O-BEE MANFRED JUSTICE-ET PB
 HOUSAM122358313 *CVF*RDF*BLF*DPF ET
 EX-94-7YR-USA SP'07 GM
WINNING-WAY MARCI-ET PB
 HOUSAF130677626 *CVC ET
 VG-89-7YR-USA
BRAEDALE GOLDWYN PB
 HOCANM10705608 *CVF*BYF*BLF
 GP-84-8YR-CAN EXTRA'05 GM'12
MD-DELIGHT DURHAM ATLEE-ET PB
 HOUSAF131704103 ET
 EX-92-4YR-USA DOM GMD 8*(0/40)
 03-11 305 15286 869 5.7 492 3.2
 365 17368 948 5.5 567 3.3
 2 LACT: 35265 1746 5.0 1163 3.3 KG
 ALL-AMERICAN SR.3-YR 2005
 RES.INT. 2005 MADISON
 1ST SR.3-YR 2005 MADISON
 Progeny Data: 1EX 1VG 0GP 0G OF
 2 DAUS ME AVG: 14767 559 3.8 452 3.1
 AVG BCA: M279 F287 P273

The information herein contained is based upon the records maintained by the Holstein Association of Canada. The accuracy of the information is not guaranteed and is subject to correction according to the Association's By-laws.

L'information contenue dans la présente est fondée sur les registres tenus à jour par l'Association Holstein du Canada. L'exactitude de cette information n'est pas garantie et est assujettie à des corrections conformément aux Statuts de l'Association.

0200HO10367

BERGITTE HONORY

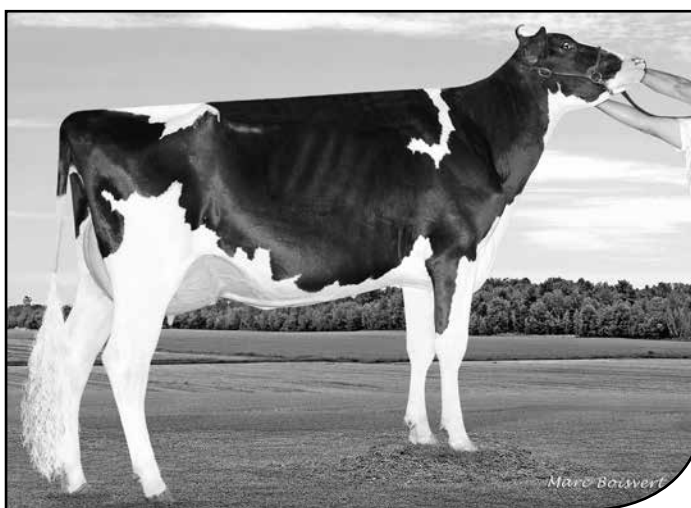
BALISTO X DEMPSEY X MR BURNS

Breeder(s)/Éleveur(s): Bertrand Boutin & Fils inc., Saint-Georges and Martin Veilleux, Saint-Georges, QC



- His dam stands out as one of Dempsey's top 3 daughters on the GLPI list (August 2015)
- High DGVs for GPA LPI (+3319), components (0.36 F and 0.45 P), fat yield (+89) and type (+14)

- Sa mère figure parmi les 3 meilleures filles de Dempsey selon l'IPVG (août 2015)
- Des VGD élevées pour l'IPV MPG (+3319), les composants (0,36 G et 0,45 P), le rendement en gras (+89) et la conformation (+14)


 3rd DAM/AGMM:
BERGITTE GIVENCHY HOLEY VG88-6YR CAN 9*

 DAM/MÈRE:
BERGITTE DEMPSEY HOTESSE VG86-3YR CAN
**CAN - GPA/MPG
 08/2015**

Milk/Lait kg	1055
Fat/Gras kg	76
Fat/Gras %	+.37
Prot. kg	79
Prot. %	+.40
SCS/CS	2.67
Conformation	13
LPI/IPV	3164



BERGITTE HONORY PB 0200HO10367
 HOCANM108497662 *CVF*RDF*BYF*BLF*DPF*CNF B:2014 May 10
 CAN-GPA Aug*15 70%Rel GPA LPI+3164/66%
 KG M+1055/75% F+76/97% %F+0.37 PRO\$
 SCS 2.67 P+79/99% %P+0.40 +2078
 CAN-GPA Aug*15 68%Rel Conf+13
 MS+11 F&L+10 DS+8 R+5

Herd Life/Durée de vie 106
 Daughter Fertility/Fertilité des filles 101
 Calving Ability/Aptitude au vêlage 104

Prepared for:
 THE SEMEX ALLIANCE
 GUELPH ON
 Tel: 519-821-5060

4th-7th Maternal Dam
 NUTTINGDALE DURHAM HANNAH EX-92-2E-CAN 4*
 NUTTINGDALE AIRLINR HARMONY VG-88-5YR-USA
 NUTTINGDALE BLACKSTAR HOOCH VG-87-5YR-USA
 PINETREE-R STARBUCK HONOR-ET VG-86-5YR-USA

DE-SU 11236 BALISTO-ET PB
 HOUSAM70625988 *CVF*BYF*BLF*DPF ET
 CAN-GPA Aug*15 73%Rel GPA LPI+3027/69%
 KG M+1512/91% F+94/99% %F+0.38 PRO\$
 SCS 2.66 P+84/99% %P+0.31 +2082
 CAN-GPA Aug*15 71%Rel Conf+8
 MS+6 F&L+8 DS+4 R-1

DE-SU 521 BOOKEM-ET PB
 HOUSAM66636657 *CVF*RDF*BYF*BLF*DPF ET
 CAN-GEBV Aug*15 94%Rel GLPI+2804/89%
 KG M+1401 F+48 %F-0.01 P+61 %P+0.13
 CAN-GEBV Aug*15 91%Rel Conf+10

DE-SU 199-ET PB
 HOUSAF69490353 ET
 VG-85-3YR-USA
 02-10 287 11290 507 4.5 410 3.6
 1 LACT: 11290 507 4.5 410 3.6 KG

ENSENADA TABOO PLANET-ET PB
 HOUSAM60597003 *CVF*RDF*BYF*BLF*DPF ET
 EX-90-4YR-USA GM'11 EXTRA'12

CLEAR-ECHO 822 RAMO 1199-ET PB
 HOUSAF61765027 *BLF ET
 VG-86-2YR-USA DOM

DE-SU WATSON PB
 HOUSAM64700377 *CVF*RDF*BYF*BLF*DPF
 VG-85-3YR-USA

PINE-TREE MISSY MIRANDA-ET PB
 HOUSAF61733095 ET
 VG-86-4YR-USA DOM 1*(0/7)

BERGITTE DEMPSEY HOTESSE PB
 HOCANF107057683 ET B:2012 Mar 13
 VG-86-3YR-CAN
 MS:87(FA:6 RAH:7 RAW:7) F&L:82 DS:89 R:87
 CAN-GEBV Aug*15 76%Rel GLPI+2834/73%
 KG M+182/48% F+48/91% %F+0.41 PRO\$
 SCS 2.74 P+40/94% %P+0.32 +1412
 CAN-GEBV Aug*15 74%Rel Conf+13/99%
 MS+12 F&L+10 DS+10 R+7
 02-01 305 9274 389 4.2 331 3.6
 365 10804 465 4.3 393 3.6
 BCA 241 272 269
 03-03 P 89 10945 442 4.0 392 3.6
 PBCA 245 266 272
 2 LACT: 14858 618 4.2 528 3.6 KG
 AVG BCA: M243(-10) F269(+1) P271(+15)

LIRR DREW DEMPSEY PB
 HOUSAM61083609 *CVF*RDF*BYF*BLF*DPF
 VG-86-4YR-USA EXTRA'11
 CAN-GEBV Aug*15 99%Rel GLPI+2859/98%
 KG M-174 F+29 %F+0.33 P+22 %P+0.25
 CAN-GEBV Aug*15 99%Rel Conf+18

BERGITTE MR BURNS HARLEY PB
 HOCANF105134370 *CVF*RDF
 EX-91-CAN 1*(3/4)
 01-10 305 9403 361 3.8 326 3.5 Scs2.8
 BCA 257 265 276
 04-00 305 13704 596 4.3 467 3.4
 365 15908 698 4.4 552 3.5
 BCA 292 341 309
 05-09 305 15054 669 4.4 479 3.2
 BCA 286 345 292
 3 LACT: 63616 2894 4.5 2302 3.6 KG
 AVG BCA: M278(+37) F317(+63) P292(+47)
 2 Superior Lactations
 3RD JR.2-YR 2010 BASSIN DE LA CHAUDIERE
 Progeny Data: 0EX 4VG 1GP 0G 0F
 5 DAUS ME AVG: 14324 609 4.3 472 3.3
 AVG BCA: M271 F312 P285

BRAEDALE GOLDWYN PB
 HOCANM10705608 *CVF*BYF*BLF
 GP-84-8YR-CAN EXTRA'05 GM'12
KERNDT SNEEZY DERRY DREW PB
 HOUSAF207658039
 VG-88-5YR-USA

DUDOC MR BURNS PB
 HOCANM100745543 *RDC*CVF*BYF*BLF ET
 VG-85-5YR-CAN EXTRA'09

BERGITTE GIVENCHY HOLEY PB
 HOCANF103907241 *CVC ET
 VG-88-6YR-CAN 9*(8/38)
 02-03 305 11192 428 3.8 376 3.4 Scs2.1
 365 13688 537 3.9 465 3.4
 BCA 287 295 301
 4 LACT: 80059 3250 4.1 2744 3.4 KG
 AVG BCA: M264(+27) F280(+36) P270(+27)
 1 Superior Lactation
 3RD JR.2-YR 2008 BEAUCE
 Progeny Data: 3EX 7VG 2GP 1G 0F
 10 DAUS ME AVG: 14459 568 3.9 446 3.1
 AVG BCA: M273 F291 P270

The information herein contained is based upon the records maintained by the Holstein Association of Canada. The accuracy of the information is not guaranteed and is subject to correction according to the Association's By-laws.

L'information contenue dans la présente est fondée sur les registres tenus à jour par l'Association Holstein du Canada. L'exactitude de cette information n'est pas garantie et est assujettie à des corrections conformément aux Statuts de l'Association.

0200HO10464

GEN-I-BEQ **PRINCIPAL**

TEACHER X EPIC X PLANET

Breeder(s)/Éleveur(s): Syndicat Gen-I-Beq, Saint-Patrice, QC

 **Robot Ready**TM


- High DGVs for Pro\$ (\$2689), Milk (+2626 kg) and type (+15)

- Au sommet du palmarès pour la production et la conformation (VGD +2626 kg L, +15 C) ainsi que l'indice Pro\$ (2689 \$)

- His dam is listed among the top 6 Epic daughters for GLPI in Canada

- Sa mère se hisse parmi les 6 meilleures filles de Epic pour l'IPVG au Canada


**CAN - GPA/MPG
08/2015**

Milk/Lait kg	2476
Fat/Gras kg	57
Fat/Gras %	-.32
Prot. kg	76
Prot. %	-.04
SCS/CS	2.49
Conformation	13
LPI/IPV	3205

 MATERNAL SISTER TO DAM/SŒUR MATERNELLE DE LA MÈRE:
BEAUCOISE BEACON PLONE VG88-4YR CAN

 2nd DAM/GMM:
BEAUCOISE PLANET PLANE VG86-2YR CAN 6*



GEN-I-BEQ PRINCIPAL PB 0200HO10464
HOCANM108731331 *CVF*BYF*BLF*DPF*CNF ET B:2014 Oct 11
CAN-GPA Aug*15 70%Rel GPA LPI+3205/66%
KG M+2476/99% F+57/89% %F-0.32 PRO\$
SCS 2.49 P+76/99% %P-0.04 +2465
CAN-GPA Aug*15 67%Rel Conf+13
MS+12 F&L+11 DS+7 R+7

Herd Life/Dur e de vie 112
Daughter Fertility/Fertilit  des filles 103
Calving Ability/Aptitude au v lage 102

Prepared for:
THE SEMEX ALLIANCE
GUELPH ON
Tel: 519-821-5060

4th-7th Maternal Dam
BEAUCOISE ROLEX PALMIRA VG-86-2YR-CAN 4*
BEAUCOISE INQUIRER CITATION VG-87-2YR-CAN 11*
BEAUCOISE DOMBI CALLY VG-88-2YR-CAN 8*
BEAUCOISE PRELUDE CELINA VG-85-4YR-CAN 3*

MR WELCOME TEACHER-ET PB
HOUSAM71703257 *CVF*RDF*BYF*BLF*DPF*CNF ET
VG-88-3YR-CAN
F&L:87 DS:92 R:90
CAN-GPA Aug*15 72%Rel GPA LPI+2888/68%
KG M+2531/99% F+48/82% %F-0.43 PRO\$
SCS 2.75 P+75/99% %P-0.06 +1999
CAN-GPA Aug*15 69%Rel Conf+8
MS+7 F&L+7 DS+6 R+3

SCHILLVIEW GILBY PB
HOUSAM69833043 *CVF*BYF*BLF
GMACE Aug*15 86%Rel GMLPI+2781/81%
KG M+2240 F+44 %F-0.37 P+70 %P-0.01
GMACE Aug*15 84%Rel Conf+5

MS WELCOME COLBY TAYA-ET PB
HO840F3002918882 *BYF
VG-88-5YR-USA
01-10 305 15613 497 3.2 498 3.2
365 18788 616 3.3 605 3.2
1 LACT: 31035 1071 3.5 1056 3.4 KG

SCHILLVIEW GARRETT-ET PB
HOUSAM52805710 *CVF*BYF*BLF ET
GM'10 SP'13
SCHILLVIEW SHOTTLE GLASHMA PB
HOUSAF52861290 *CVC
VG-87-4YR-USA
SOLID-GOLD COLBY-ET PB
HOUSAM60697343 *CVF*RDF*BYF*BLF*DPF ET
EX-92-5YR-USA
CLEAR-ECHO FBI 1461-ET PB
HOUSAF62385350 *CVF*BLF ET
EX-90-4YR-USA

GEN-I-BEQ EPIC PALA PB
HOCANF107655979 *BYF ET B:2012 Jul 06
GP-84-2YR-CAN
MS:85 (FA:7 RAH:8 RAW:6) F&L:81 DS:84 R:84
CAN-GEBV Aug*15 75%Rel GLPI+2976/71%
KG M+1844/98% F+47/90% %F-0.19 PRO\$
SCS 2.74 P+57/99% %P-0.03 +2004
CAN-GEBV Aug*15 73%Rel Conf+13/99%
MS+13 F&L+8 DS+6 R+5
02-06 P209 9216 337 3.7 292 3.2
PBCA 214 212 216
1 LACT: 6533 241 3.7 199 3.0 KG
AVG BCA: M214 F212 P216

GENERATIONS EPIC PB
HOCANM11104016 *CVF*BYF*BLF*DPF ET
EX-94-CAN ST'15
CAN-GEBV Aug*15 98%Rel GLPI+2795/93%
KG M+1411 F+30 %F-0.17 P+47 %P+0.01
CAN-GEBV Aug*15 97%Rel Conf+13

BEAUCOISE PLANET PLANE PB
HOCANF105742949 *BYC ET
VG-86-2YR-CAN 6*(0/30)
02-00 305 12517 486 3.9 414 3.3
365 14459 556 3.8 480 3.3
BCA 322 338 334
1 LACT: 18535 703 3.8 625 3.4 KG
AVG BCA: M322 F338 P334
Progeny Data: 0EX 7VG 6GP 2G 0F
12 DAUS ME AVG: 15417 607 3.9 479 3.1
AVG BCA: M291 F311 P290

CHARLESDALE SUPERSTITION-ET PB
HOUSAM62065919 *CVF*RDF*BYF*BLF*DPF ET
GM'12
TRAMILDA-N BAXTER EMILY-ET PB
HOUSAF139232811 ET
VG-85-2YR-CAN 8*(0/40)
ENSENADA TABOO PLANET-ET PB
HOUSAM60597003 *CVF*RDF*BYF*BLF*DPF ET
EX-90-4YR-USA GM'11 EXTRA'12
BEAUCOISE BOLTON PRINCESS PB
HOCANF104347955 *BYC
VG-85-2YR-CAN 7*(10/26)
01-11 305 12319 492 4.0 387 3.1
365 14399 574 4.0 460 3.2
BCA 326 351 323
4 LACT: 58509 2320 4.0 1961 3.4 KG
AVG BCA: M310(+109) F325(+119) P318(+115)
2 Superior Lactations
Progeny Data: 1EX 6VG 2GP 0G 0F
9 DAUS ME AVG: 16954 642 3.8 546 3.2
AVG BCA: M320 F329 P330

The information herein contained is based upon the records maintained by the Holstein Association of Canada. The accuracy of the information is not guaranteed and is subject to correction according to the Association's By-laws.

L'information contenue dans la pr sente est fond e sur les registres tenus   jour par l'Association Holstein du Canada. L'exactitude de cette information n'est pas garantie et est assujettie   des corrections conform ment aux Statuts de l'Association.

0200HO10392

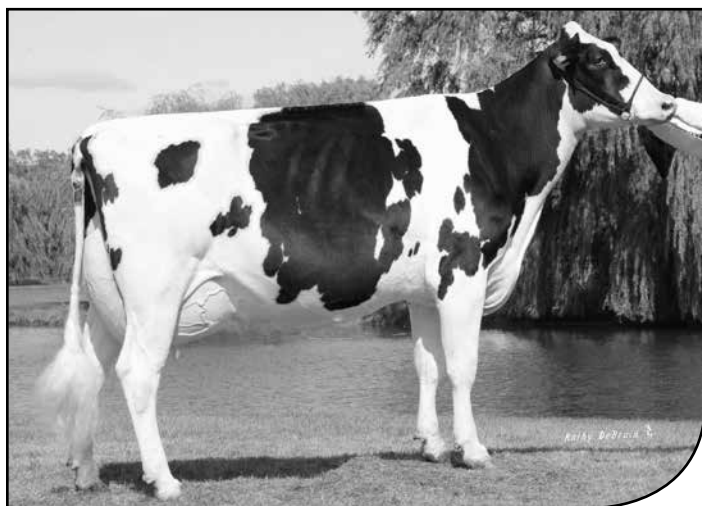
ZIMMER CROWNROYAL

DAVINCI X G W ATWOOD X SHOTTLE

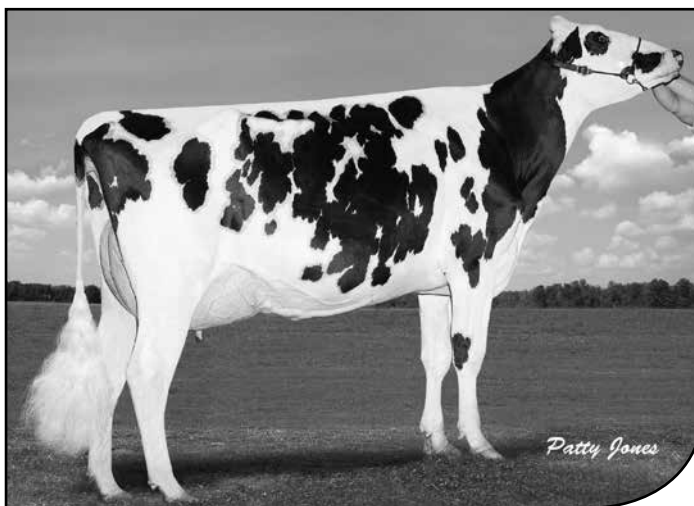

Breeder(s)/Éleveur(s): T & L Cattle Ltd., Rosedale, BC, Duane G. Zimmer, Daysland and Wendon Holsteins, Red Deer County, AB


Robot ReadyTM

- A type transmitting pedigree, his first three milking maternal sisters all scored VG as two year olds
- Proven show success from the maternal great granddam being Grand Champion at the World Dairy Expo in 2003
- Une généalogie attrayante pour la conformation; ses 3 premières sœurs maternelles ont été classifiées TB à 2 ans
- Son arrière-grand-mère maternelle a été Grande Championne lors de la World Dairy Expo 2003



3rd DAM/AGMM:
PINE-SHELTER CHEYENNE EX95-3E USA DOM



DAM/MÈRE:
PINE-SHELTER CLAIRE WOOD-ET VG87-2YR CAN

**CAN - GPA/MPG
 08/2015**

Milk/Lait kg	1551
Fat/Gras kg	105
Fat/Gras %	+.47
Prot. kg	64
Prot. %	+.12
SCS/CS	2.74
Conformation	14
LPI/IPV	3146



ZIMMER CROWNROYAL PB 0200HO10392
 HOCANM12049349 *CVF*RDF*BYF*BLF*DPF*CNF ET B:2014 Jul 17
 CAN-GPA Aug*15 72%Rel GPA LPI+3146/68%
 KG M+1551/92% F+105/99% %F+0.47 PRO\$
 SCS 2.74 P+64/98% %P+0.12 +1981
 CAN-GPA Aug*15 69%Rel Conf+14
 MS+13 F&L+11 DS+11 R-1

Herd Life/Durée de vie 104
 Daughter Fertility/Fertilité des filles 98
 Calving Ability/Aptitude au vêlage 103

Prepared for:
 THE SEMEX ALLIANCE
 GUELPH ON
 Tel: 519-821-5060

DE-SU MG DAVINCI 11288-ET PB
 HOUSAM70626040 *CVF*BYF*BLF*DPF ET
 CAN-GPA Aug*15 76%Rel GPA LPI+3134/71%
 KG M+1501/91% F+106/99% %F+0.50 PRO\$
 SCS 2.83 P+73/99% %P+0.22 +2211
 CAN-GPA Aug*15 73%Rel Conf+10
 MS+10 F&L+10 DS+4 R+0

PINE-SHELTER CLAIRE WOOD-ET PB
 HOUSAF69619061 ET B:2010 Sep 04
 VG-87-2YR-CAN
 MS:87 (FA:8 RAH:8 RAW:7) F&L:88 DS:85 R:87
 CAN-GEBV Aug*15 76%Rel GLPI+2848/72%
 KG M+1236/93% F+51/93% %F+0.02 PRO\$
 SCS 2.88 P+38/93% %P-0.02 +1417
 CAN-GEBV Aug*15 73%Rel Conf+14/99%
 MS+13 F&L+14 DS+10 R-1
 02-05 150 7595 299 3.9 231 3.0
 1 LACT: 7595 299 3.9 231 3.0 KG
 Progeny Data: 0EX 3VG 0GP 0G 0F
 3 DAUS ME AVG: 17837 657 3.7 566 3.2
 AVG BCA: M337 F336 P342

MOUNTFIELD SSI DCY MOGUL-ET PB
 HO840M3006972816 *CVF*RDF*BYF*BLF*DPF ET
 EXTRA'15
 CAN-GEBV Aug*15 95%Rel GLPI+3085/87%
 KG M+1543 F+97 %F+0.40 P+57 %P+0.06
 CAN-GEBV Aug*15 91%Rel Conf+12

DE-SU 199-ET PB
 HOUSAF69490353 ET
 VG-85-3YR-USA
 02-10 287 11290 507 4.5 410 3.6
 1 LACT: 11290 507 4.5 410 3.6 KG

MAPLE-DOWNS-I G WATWOOD PB
 HOCANM8956379 *CVF*RDF*BYF*BLF*DPF ET
 EX-90-4YR-USA ST'12
 CAN-GEBV Aug*15 99%Rel GLPI+2794/98%
 KG M+443 F+57 %F+0.38 P+23 %P+0.08
 CAN-GEBV Aug*15 99%Rel Conf+15

PINE-SHELTER CHELSY SHO-ET PB
 HOUSAF137411694 ET
 VG-86-2YR-USA DOM
 02-00 305 11821 433 3.7 380 3.2
 365 14538 533 3.7 471 3.2
 1 LACT: 26776 1002 3.7 888 3.3 KG
 Progeny Data: 0EX 1VG 0GP 0G 0F
 1 DAUS ME AVG: 16938 547 3.2 488 2.9
 AVG BCA: M320 F280 P295

COYNE-FARMS DORCY-ET PB
 HOUSAM139005002 *BYC*CVF*BLF ET

MOUNTFIELD MARSH MAXINE-ET PB
 HOUSAF62784081 ET
 VG-88-2YR-USA DOM

DE-SU WATSON PB
 HOUSAM64700377 *CVF*RDF*BYF*BLF*DPF
 VG-85-3YR-USA

PINE-TREE MISSY MIRANDA-ET PB
 HOUSAF61733095 ET
 VG-86-4YR-USA DOM 1*(0/7)

BRAEDALE GOLDWYN PB
 HOCANM10705608 *CVF*BYF*BLF
 GP-84-8YR-CAN EXTRA'05 GM'12

MD-DELIGHT DURHAM ATLEE-ET PB
 HOUSAF131704103 ET
 EX-92-4YR-USA DOM GMD 8*(0/40)

PICSTON SHUTTLE-ET PB
 HOGBRM598172 *CVF*BYF*BLF*MPF ET
 EX-96-7YR-GBR EXTRA'09 GM'10

PINE-SHELTER CHEYENNE PB
 HOUSAF128850336
 EX-95-3E-USA DOM
 04-08 305 16611 565 3.4 531 3.2
 365 18516 624 3.4 596 3.2
 4 LACT: 68879 2428 3.5 2211 3.2 KG

The information herein contained is based upon the records maintained by the Holstein Association of Canada. The accuracy of the information is not guaranteed and is subject to correction according to the Association's By-laws.

L'information contenue dans la présente est fondée sur les registres tenus à jour par l'Association Holstein du Canada. L'exactitude de cette information n'est pas garantie et est assujettie à des corrections conformément aux Statuts de l'Association.