

EastGen

Invested in your future.

Premier Program

January 2016

- Semen Sales:** Genomic bull availability can change on a daily basis. To reserve semen on a specific sire on a first-come-first-serve basis or learn more about availability, call your local EastGen Regional Sales Representative.
- Insemination Service:** Keep this list by your phone. Call EastGen's dispatch to find out which Premier Program Genomic Sires will be available today.
- Ventes de semence :** La disponibilité des taureaux génomiques peut changer tous les jours. Pour réserver la semence d'un taureau spécifique selon le principe de premier arrivé, premier servi, communiquez avec votre représentant commercial régional d'EastGen.
- Service d'insémination :** Gardez cette liste près de votre téléphone. Appelez le service de répartition d'EastGen pour savoir quels taureaux génomiques du programme Premier seront disponibles aujourd'hui.



MORSAN MOTOCROSS
0200HO10433 HOCANM12029672

SIRE: BACON-HILL MONTROSS-ET
DAM: SULLY MAN-O-SHAN MARTHA-ET
MGS: LADYS-MANOR MAN-O-SHAN-ET

GPA LPI/IPV MPG +3178
M/L +2361 F/G +71 (-0.16) P +80 (+.03)
Conf. +14 SCS/CS 2.84
Calving Ability/Apt. au vêlage 100

Retail: \$25
You Pay * \$10



IHG DISCUSSION-ET
0200HO10494 HOUSAM73963346

SIRE: STE ODILE PURE
DAM: SPEEK-NJ UNO DANCE-ET
MGS: AMIGHETTI NUMERO UNO ET

GPA LPI/IPV MPG +3097
M/L +1662 F/G +69 (+0.08) P +64 (+0.09)
Conf. +12 SCS/CS 2.85
Calving Ability/Apt. au vêlage 105

Retail: \$25
You Pay * \$10



STANTONS CONTROLLER-ET
0200HO10396 HO840M3124584867

SIRE: STANTONS MAIN EVENT
DAM: LARCREST CRAYON-ET
MGS: MOUNTFIELD SSI DCY MOGUL-ET

GPA LPI/IPV MPG +3023
M/L +971 F/G +70 (+0.32) P +43 (+0.09)
Conf. +14 SCS/CS 2.74
Calving Ability/Apt. au vêlage 100

Retail: \$25
You Pay * \$10



GENOMAX

CLAYNOOK DELAWARE
0200HO02985 HOCANM11595019

SIRE: COOKIECUTTER MOM HUNTER-ET
DAM: OCD PLANET DIAMOND-ET
MGS: ENSENADA TABOO PLANET-ET

GPA LPI/IPV MPG +2848
M/L +1054 F/G +53 (+0.16) P +49 (+0.13)
Conf. +12 SCS/CS 2.75
Calving Ability/Apt. au vêlage 102

Retail: \$20
You Pay * \$8



IHG GRYFFINDOR-ET
0200HO10488 HOUSAM73963336

SIRE: S-S-I MOGUL DEFENDER-ET
DAM: FARNEAR-TBR-BH GEORGIA-ET
MGS: DE-SU BKM MCCUTCHEN 1174-ET

GPA LPI/IPV MPG +3307
M/L +1536 F/G +91 (+0.33) P +70 (+.17)
Conf. +13 SCS/CS 2.93
Calving Ability/Apt. au vêlage 107

Retail: \$35
You Pay * \$14

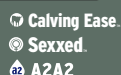


AMITIES LOVERMAN
0200HO06517 HOCANM107417397

SIRE: GENERATIONS EPIC
DAM: AMITIES MAN O MAN LOVEMY
MGS: LONG-LANGS OMAN OMAN-ET

GPA LPI/IPV MPG +2779
M/L +909 F/G +38 (+.05) P +51 (+.19)
Conf. +12 SCS/CS 3.01
Calving Ability/Apt. au vêlage 104

Retail: \$20
You Pay * \$8



Technician's Choice ⇒ Genomax Plus = High Fertility + Calving Ease



CLAYNOOK DEDUCTIVE
0200HO02935 HOCANM11595003

Immunity+ Repromax
HealthSmart Calving Ease
Robot Ready A2A2

SIRE: AMIGHETTI NUMERO UNO ET
DAM: OCD PLANET DIAMOND-ET
MGS: ENSENADA TABOO PLANET-ET

You Pay \$15

GPA LPI/IPV MPG +3057
M/L +1217 F/G +73 (+0.26) P +47 (+.06)
Conf. +12 SCS/CS 2.75
Calving Ability/Apt. au vêlage 107 Rel 91%
Bull Fertility/ Fertilité du taureau 63 Rel 58%

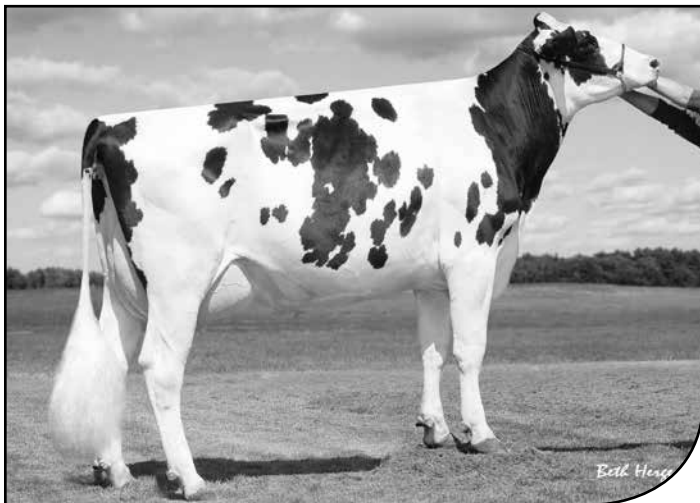
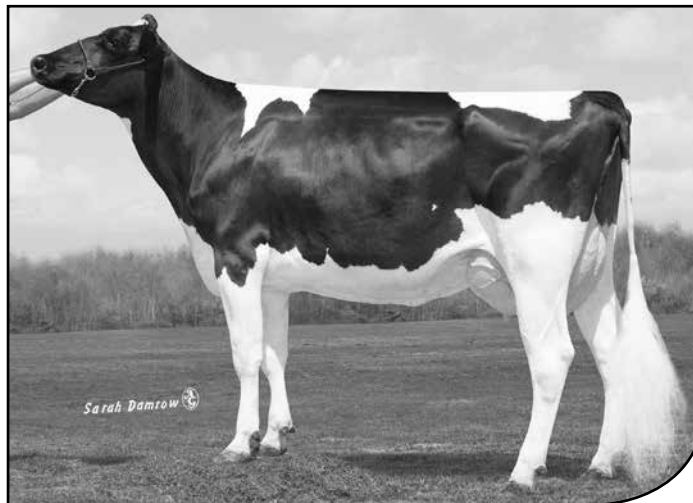
0200HO10433

MORSAN **MOTOCROSS**

MONTROSS X SHAN X PLANET


Breeder(s)/Éleveur(s): Westcoast Holsteins, Chilliwack, BC

- From the Shottle May family; a pedigree that has entered numerous sons into AI including Meridian
- De la famille de Shottle May; cette généalogie compte de nombreux fils en I.A. y compris Meridian
- Paternal line is a high production pedigree that is seen to heavily influence the genomic breakdown
- Le côté paternel de cette généalogie a grandement contribué à ce que Motocross se démarque fortement en production


 3rd DAM/AGMM:
SULLY SHOTTLE MAY-TW EX USA DOM 6*

 2rd DAM/GMM:
SULLY PLANET MANITOBA-ET VG-6YR CAN DOM 6*
**CAN - GPA/MPG
 12/2015**

Milk/Lait kg	2361
Fat/Gras kg	71
Fat/Gras %	-.16
Prot. kg	80
Prot. %	+.03
SCS/CS	2.84
Conformation	14
LPI/IPV	3178



MORSAN MOTOCROSS PB 0200HO10433
 HOCANM12029672 *CVF*RDF*BYF*BLF*DPF ET B:2014 Aug 14
 CAN-GPA Dec*15 72%Rel GPA LPI+3178/67%
 KG M+2361/99% F+71/95% %F-0.16 PRO\$
 SCS 2.84 P+80/99% %P+0.03 +2243
 CAN-GPA Dec*15 68%Rel Conf+14
 MS+13 F&L+11 DS+9 R+3

Herd Life/Dur e de vie 106
 Daughter Fertility/Fertilit  des filles 101
 Calving Ability/Aptitude au v lage 100

Prepared for:
 THE SEMEX ALLIANCE
 GUELPH ON
 Tel: 519-821-5060

4th-7th Maternal Dam
 MS SULLY OMAN MUETZE-ET EX-90-4YR-USA
 JOHNAN MARSHALL MINT VG-85-2YR-USA
 POLY-KOW DURHAM MINCY-ET VG-88-6YR-USA
 POLY-KOW RUDOLPH MINK-ET VG-86-5YR-USA

BACON-HILL MONTROSS-ET PB
 HOUSAM71703339 *CVF*BYF*BLF*DPF ET
 CAN-GPA Dec*15 77%Rel GPA LPI+3050/73%
 KG M+2483/99% F+87/98% %F-0.05 PRO\$
 SCS 2.95 P+77/99% %P-0.04 +2174
 CAN-GPA Dec*15 74%Rel Conf+11
 MS+9 F&L+10 DS+5 R+2

SULLY MAN-O-SHAN MARTHA-ET PB
 HOUSAF142390995 ET B:2013 Feb 26
 VG-85-2YR-CAN
 MS:87(FA:8 RAH:7 RAW:7) F&L:86 DS:82 R:87
 CAN-GEEV Dec*15 78%Rel GPA LPI+3195/73%
 KG M+1747/98% F+71/98% %F+0.08 PRO\$
 SCS 2.88 P+69/99% %P+0.12 +2175
 CAN-GPA Dec*15 74%Rel Conf+13/99%
 MS+13 F&L+8 DS+6 R+1
 02-03 P147 10722 409 3.8 365 3.4
 PBCA 271 278 290
 1 LACT: 5806 211 3.6 185 3.2 KG
 AVG BCA: M271 F278 P290

MOUNTFIELD SSI DCY MOGUL-ET PB
 HO840M3006972816 *CVF*RDF*BYF*BLF*DPF ET
 EXTRA'15
 CAN-GEBV Dec*15 96%Rel GLPI+2926/89%
 KG M+1449 F+90 %F+0.36 P+54 %P+0.05
 CAN-GEBV Dec*15 94%Rel Conf+12
UNIQUE-STYLE BOLTON MONEY PB
 HOUSAF139121711

LADYS-MANOR MAN-O-SHAN-ET PB
 HOUSAM70528492 *CVF*BYF*BLF*DPF ET
 GMACE Dec*15 88%Rel GMLPI+2799/82%
 KG M+1324 F+62 %F+0.11 P+54 %P+0.11
 GMACE Dec*15 84%Rel Conf+9
SULLY PLANET MANITOBA-ET PB
 HOUSAF139853931 ET
 VG-85-6YR-CAN DOM 6*(0/30)
 02-03 305 13200 511 3.9 431 3.3
 04-01 305 17599 625 3.6 554 3.1
 365 19808 710 3.6 636 3.2
 BCA 360 347 360
 06-01 P211 15610 512 3.3 485 3.1
 PBCA 294 263 294
 3 LACT: 57105 2121 3.7 1887 3.3 KG
 AVG BCA: M327(+85) F305(+57) P327(+87)
 1 Superior Lactation
 Progeny Data: 0EX 9VG 6GP 0G 0F
 11 DAUS ME AVG: 16150 666 4.1 516 3.2
 AVG BCA: M305 F341 P312

COYNE-FARMS DORCY-ET PB
 HOUSAM139005002 *BYC*CVF*BLF ET
 ST'15
MOUNTFIELD MARSH MAXINE-ET PB
 HOUSAF62784081 ET
 VG-88-2YR-USA DOM
SANDY-VALLEY BOLTON-ET PB
 HOUSAM131823833 *BYC*CVF*BLF ET
 EX-90-5YR-USA GM'10 EXTRA'10
PASEN ROLEX MUMMY PB
 HOUSAF137045433
 VG-88-7YR-USA

LONG-LANGS OMAN OMAN-ET PB
 HOUSAM135746776 *CVF*BYF*BLF ET
 VG-85-4YR-USA GM'10 EXTRA'12
LADYS-MANOR PL SHANDRA-ET PB
 HOUSAF66676321 ET
 VG-87-3YR-USA
ENSENADA TABOO PLANET-ET PB
 HOUSAM60597003 *CVF*RDF*BYF*BLF*DPF ET
 EX-90-4YR-USA GM'11 EXTRA'12
SULLY SHOTTLE MAY-TW PB
 HOUSAF138218285 MB
 EX-90-6YR-USA DOM 6*(0/31)
 06-07 305 15753 618 3.9 541 3.4
 365 18126 705 3.9 625 3.4
 3 LACT: 55570 1969 3.5 1830 3.3 KG
 Progeny Data: 0EX 3VG 0GP 0G 0F
 4 DAUS ME AVG: 16632 632 3.8 527 3.2
 AVG BCA: M314 F324 P318

The information herein contained is based upon the records maintained by the Holstein Association of Canada. The accuracy of the information is not guaranteed and is subject to correction according to the Association's By-laws.

L'information contenue dans la pr sente est fond e sur les registres tenus   jour par l'Association Holstein du Canada. L'exactitude de cette information n'est pas garantie et est assujettie   des corrections conform ment aux Statuts de l'Association.

0200HO10494

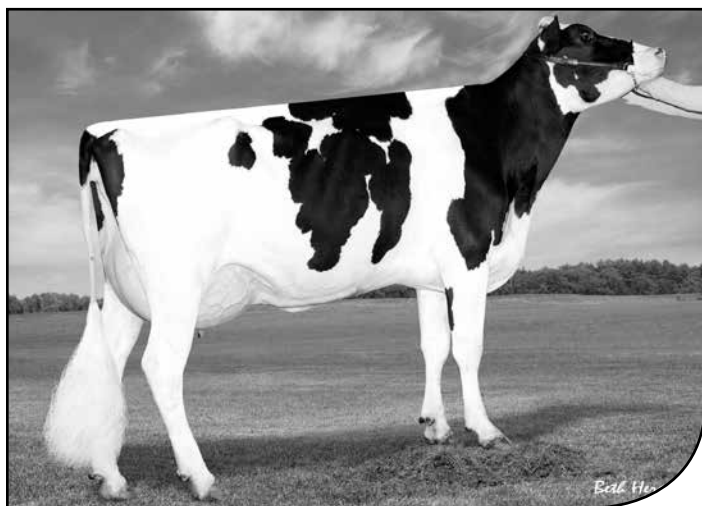
IHG DISCUSSION-ET

PURE X NUMERO UNO X PLANET

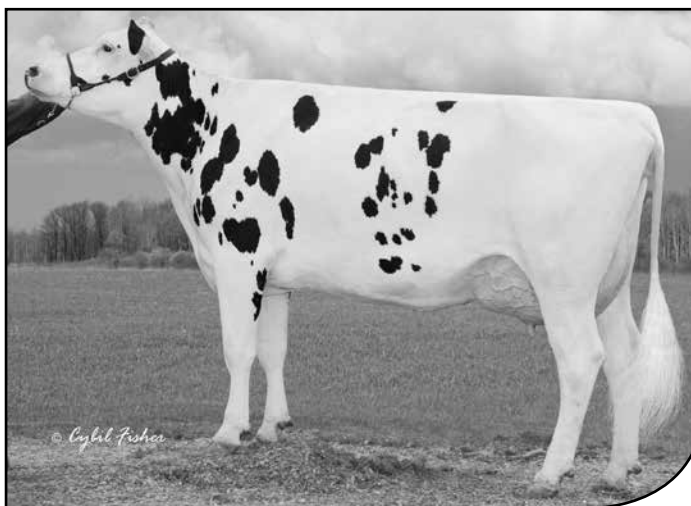
Breeder(s)/Éleveur(s): Innovative Holstein Genetics LLC, Springfield, IL, USA



- Immunity Plus and high DGV Pro\$ of 2422
- Immunité Plus et une VGD élevée pour le Pro\$ de 2422
- A solid sire line-up: Numero Uno x Planet x Durham
- Une lignée de taureaux influents : Numero Uno x Planet x Durham



2nd DAM/GMM:
REGAN-ALH PLANET DELORIA-ET VG86-2YR USA



3rd DAM/AGMM:
A-L-H DESTINY-ET VG87-3YR USA DOM GMD 4*

**CAN - GPA/MPG
12/2015**

Milk/Lait kg	1662
Fat/Gras kg	69
Fat/Gras %	+0.08
Prot. kg	64
Prot. %	+0.09
SCS/CS	2.85
Conformation	12
LPI/IPV	3097



IHG DISCUSSION-ET PB 0200HO10494
 HOUSAM73963346 *CVF*BRC*BYF*BLF*DPF*CNF ET B:2014 Aug 20
 CAN-GPA Dec*15 72%Rel GPA LPI+3097/68%
 KG M+1662/94% F+69/94% %F+0.08 PRO\$
 SCS 2.85 P+64/97% %P+0.09 +2221
 CAN-GPA Dec*15 69%Rel Conf+12
 MS+12 F&L+11 DS+3 R+3

Prepared for:
 THE SEMEX ALLIANCE
 GUELPH ON
 Tel: 519-821-5060

4th-7th Maternal Dam
 MARKWELL DURHAM DAISY-ET EX-92-6YR-USA
 MARKWELL LUKE RAPTURE-ET EX-92-4E-USA 7*
 MARKWELL BSTAR E RAVEN-ET EX-95-3E-USA 5*
 MARKWELL MARK ELITE EX-92-4E-USA 3*

Herd Life/Durée de vie 109
 Daughter Fertility/Fertilité des filles 105
 Calving Ability/Aptitude au vêlage 105

STE ODILE PURE PB
 HOCANM108013902 *CVF*BRC*BYF*BLF*DPF*CNF ET
 CAN-GPA Dec*15 75%Rel GPA LPI+2990/71%
 KG M+1871/96% F+75/96% %F+0.07 PRO\$
 SCS 3.11 P+67/98% %P+0.05 +2042
 CAN-GPA Dec*15 72%Rel Conf+11
 MS+11 F&L+9 DS+3 R+2

MOUNTFIELD SSI DCY MOGUL-ET PB
 HO840M3006972816 *CVF*RDF*BYF*BLF*DPF ET
 EXTRA'15
 CAN-GEBV Dec*15 96%Rel GLPI+2926/89%
 KG M+1449 F+90 %F+0.36 P+54 %P+0.05
 CAN-GEBV Dec*15 94%Rel Conf+12

COYNE-FARMS DORCY-ET PB
 HOUSAM139005002 *BYC*CVF*BLF ET
 ST'15

MOUNTFIELD MARSH MAXINE-ET PB
 HOUSAF62784081 ET
 VG-88-2YR-USA DOM

LONG-LANGS OMAN OMAN-ET PB
 HOUSAM135746776 *CVF*BYF*BLF ET
 VG-85-4YR-USA GM'10 EXTRA'12

STE ODILE MANOMAN MOD PLATINE PB
 HOCANF106505969 *BRC ET
 VG-86-2YR-CAN
 02-06 305 11464 435 3.8 378 3.3
 365 13636 523 3.8 462 3.4
 BCA 281 284 289
 1 LACT: 17574 703 4.0 627 3.6 KG

LES091 BAXTER MODEL RUBIS PB
 HOCANF104883111 *BRC
 VG-88-5YR-CAN 6*(0/31)

SPEEK-NJ UNO DANCE-ET PB
 HOUSAF71619098 *BLF*DPF B:2013 Jan 03
 GP-82-2YR-USA
 GMACE Dec*15 76%Rel GMLPI+2857/71%
 KG M+1161/91% F+46/89% %F+0.02 PRO\$
 SCS 2.82 P+45/96% %P+0.07 +1770
 GMACE Dec*15 73%Rel Conf+11/97%
 MS+11 F&L+9 DS+2 R-1

AMIGHETTI NUMERO UNO ET PB
 HOITAM17990915143 *CVF*BYF*BLF*DPF ET
 EX-90-3YR-HUN ST'15
 CAN-GEBV Dec*15 98%Rel GLPI+3147/92%
 KG M+154 F+74 %F+0.63 P+25 %P+0.18
 CAN-GEBV Dec*15 96%Rel Conf+16

LONG-LANGS OMAN OMAN-ET PB
 HOUSAM135746776 *CVF*BYF*BLF ET
 VG-85-4YR-USA GM'10 EXTRA'12

AMIGHETTI SHOTTLA AVE PB
 HOITAF17990346074 ET
 VG-89-ITA

REGAN-ALH PLANET DELORIA-ET PB
 HOUSAF66624771 ET
 VG-86-2YR-USA
 02-04 305 13336 590 4.4 476 3.6
 04-03 305 12197 468 3.8 427 3.5
 2 LACT: 40361 1625 4.0 1477 3.7 KG
 Progeny Data: 0EX 2VG 3GP 1G 0F
 6 DAUS ME AVG: 15440 596 3.9 504 3.3
 AVG BCA: M292 F306 P304

ENSENADA TABOO PLANET-ET PB
 HOUSAM60597003 *CVF*RDF*BYF*BLF*DPF ET
 EX-90-4YR-USA GM'11 EXTRA'12

A-L-H DESTINY-ET PB
 HOUSAF61361722 ET
 VG-87-3YR-USA DOM GMD 4*(0/20)
 02-04 305 12515 486 3.9 449 3.6
 365 15059 571 3.8 545 3.6
 1 LACT: 15059 571 3.8 545 3.6 KG
 Progeny Data: 0EX 2VG 0GP 0G 0F
 2 DAUS ME AVG: 13471 552 4.1 431 3.2
 AVG BCA: M255 F283 P261

0200HO10396

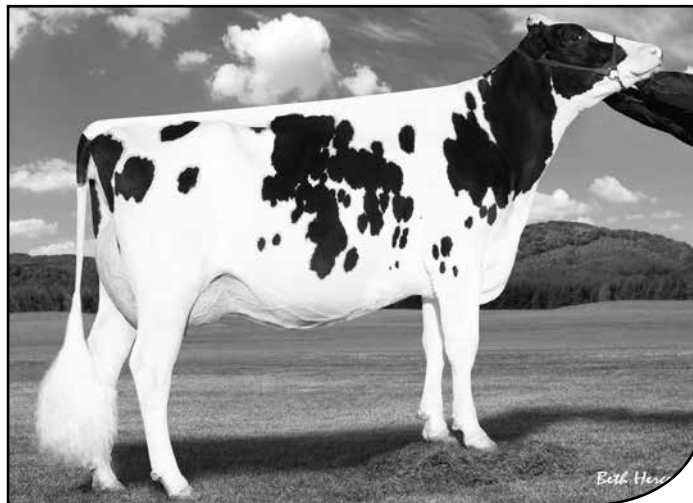
STANTONS **CONTROLLER-ET**

MAIN EVENT X MOGUL X RAMOS


Breeder(s)/Éleveur(s): Stanton Bros Limited, Ilderton, ON



- High type (DGV +15) and, as a bonus, Immunity Plus
- 6 Controller maternal sisters are over 2600 GPA TPI
- Potentiel élevé pour la conformation (VGD +15) et en prime, Immunité Plus
- 6 sœurs maternelles de Controller sont supérieures à 2600 pour la MPG TPI


 MATERNAL SISTER TO DAM/SOEUR MATERNELLE DE LA MÈRE:
LARCREST CALE-ET VG89-3YR USA

 2nd DAM/GMM:
LARCREST CRIMSON-ET EX93-2E USA DOM 1*
**CAN - GPA/MPG
 12/2015**

Milk/Lait kg	971
Fat/Gras kg	70
Fat/Gras %	+0.32
Prot. kg	43
Prot. %	+0.09
SCS/CS	2.74
Conformation	14
LPI/IPV	3023



STANTONS CONTROLLER-ET PB 0200HO10396
 HO840M3124584867 *CVF*RDF*BYF*BLF*DPF*CNF ET B:2014 Aug 01
 CAN-GPA Dec*15 74%Rel GPA LPI+3023/70%
 KG M+971/71% F+70/94% %F+0.32 PRO\$
 SCS 2.74 P+43/84% %P+0.09 +1968
 CAN-GPA Dec*15 71%Rel Conf+14
 MS+14 F&L+11 DS+6 R+3

Herd Life/Durée de vie 109
 Daughter Fertility/Fertilité des filles 103
 Calving Ability/Aptitude au vêlage 100

Prepared for:
 THE SEMEX ALLIANCE
 GUELPH ON
 Tel: 519-821-5060

4th-7th Maternal Dam
 LARCREST OSIDE CHAMPAGNE-TW EX-90-8YR-USA
 LARCREST JUROR CHANEL EX-93-3E-USA
 LARCREST LINDY CHANDRA VG-85-3YR-USA
 LARCREST INSPIRATION CARLY VG-87-6YR-USA

STANTONS MAIN EVENT PB
 HOCANM11596146 *CVF*BYF*BLF ET
 CAN-GPA Dec*15 76%Rel GPA LPI+3014/71%
 KG M+1245/82% F+60/90% %F+0.15 PRO\$
 SCS 2.84 P+52/92% %P+0.09 +2003
 CAN-GPA Dec*15 72%Rel Conf+12
 MS+11 F&L+11 DS+5 R+3

LARCREST CRAYON-ET PB
 HOUSAF58591916 ET B:2012 Oct 31
 VG-86-2YR-CAN
 MS:87 (FA:8 RAH:9 RAW:6) F&L:85 DS:86 R:85
 CAN-GEBV Dec*15 78%Rel GLPI+2954/74%
 KG M+834/81% F+64/97% %F+0.30 PRO\$
 SCS 2.62 P+38/93% %P+0.08 +1824
 CAN-GEBV Dec*15 75%Rel Conf+13/99%
 MS+12 F&L+10 DS+7 R+4
 02-00 305 11667 470 4.0 360 3.1
 354 13223 534 4.0 409 3.1
 BCA 288 311 277
 1 LACT: 13223 534 4.0 409 3.1 KG
 AVG BCA: M288(+8) F311(+6) P277(-1)

MOUNTFIELD SSI DCY MOGUL-ET PB
 HO840M3006972816 *CVF*RDF*BYF*BLF*DPF ET
 EXTRA'15
 CAN-GEBV Dec*15 96%Rel GLPI+2926/89%
 KG M+1449 F+90 %F+0.36 P+54 %P+0.05
 CAN-GEBV Dec*15 94%Rel Conf+12

STANTONS SUPER ELDA PB
 HOCANF11084001 ET
 GP-83-2YR-CAN 4*(0/20)
 02-01 305 12369 500 4.0 408 3.3
 365 14217 578 4.1 471 3.3
 BCA 304 327 314
 1 LACT: 16406 660 4.0 548 3.3 KG

MOUNTFIELD SSI DCY MOGUL-ET PB
 HO840M3006972816 *CVF*RDF*BYF*BLF*DPF ET
 EXTRA'15
 CAN-GEBV Dec*15 96%Rel GLPI+2926/89%
 KG M+1449 F+90 %F+0.36 P+54 %P+0.05
 CAN-GEBV Dec*15 94%Rel Conf+12

LARCREST CRIMSON-ET PB
 HOUSAF53452457 *BYF ET
 EX-93-2E-USA DOM 1*(0/8)
 02-02 305 13975 673 4.8 524 3.7
 05-02 305 18207 987 5.4 666 3.7
 365 21042 1110 5.3 775 3.7
 06-10 305 15409 656 4.3 519 3.4
 3 LACT: 79321 3781 4.8 2955 3.7 KG
 Progeny Data: 0EX 3VG 1GP 0G 0F
 3 DAUS ME AVG: 15085 622 4.1 495 3.3
 AVG BCA: M285 F319 P299

COYNE-FARMS DORCY-ET PB
 HOUSAM139005002 *BYC*CVF*BLF ET
 ST'15
MOUNTFIELD MARSH MAXINE-ET PB
 HOUSAF62784081 ET
 VG-88-2YR-USA DOM
CHARLESDALE SUPERSTITION-ET PB
 HOUSAM62065919 *CVF*RDF*BYF*BLF*DPF ET
 GM'12
WABASH-WAY EVETT-ET PB
 HOUSAF137044384 ET
 VG-86-2YR-CAN DOM 19*(6/93)

COYNE-FARMS DORCY-ET PB
 HOUSAM139005002 *BYC*CVF*BLF ET
 ST'15
MOUNTFIELD MARSH MAXINE-ET PB
 HOUSAF62784081 ET
 VG-88-2YR-USA DOM
RAMOS PB
 HOUEUM253642 *BYC*CVF*BLF
LARCREST COSMOPOLITAN PB
 HOUSAF52475668
 VG-87-3YR-USA DOM GMD 8*(0/40)
 02-04 305 12460 509 4.1 450 3.6
 365 14030 572 4.1 508 3.6
 1 LACT: 17341 727 4.2 625 3.6 KG
 Progeny Data: 0EX 2VG 0GP 0G 0F
 2 DAUS ME AVG: 17467 675 3.9 533 3.1
 AVG BCA: M330 F346 P322

The information herein contained is based upon the records maintained by the Holstein Association of Canada. The accuracy of the information is not guaranteed and is subject to correction according to the Association's By-laws.

L'information contenue dans la présente est fondée sur les registres tenus à jour par l'Association Holstein du Canada. L'exactitude de cette information n'est pas garantie et est assujettie à des corrections conformément aux Statuts de l'Association.

0200HO10488

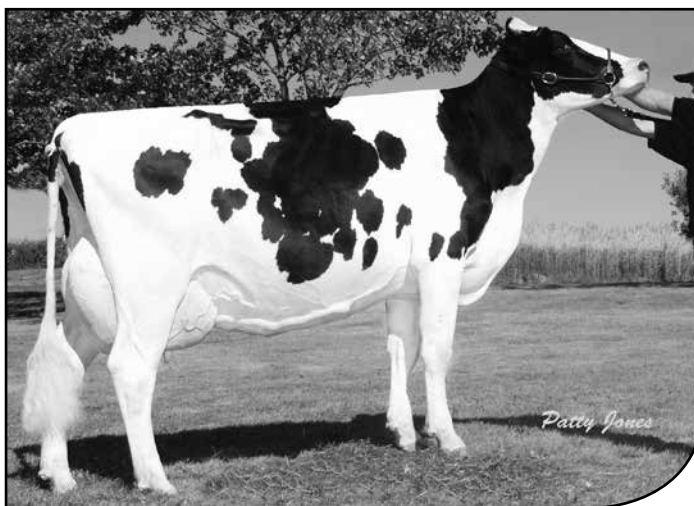
IHG GRYFFINDOR-ET

DEFENDER X MCCUTCHEN X SUPER


Breeder(s)/Éleveur(s): Innovative Holstein Genetics LLC, Springfield, IL, USA

 **Immunity+**  **Robot Ready**TM

- Dam scored 87 and from a solid cow family from Brigeen
- Outstanding production profile on this feet & legs specialist (DGV +17)
- Sa mère classifiée TB87 est issue d'une famille de vaches reconnue chez Brigeen
- Un spécialiste des pieds & membres (VGD +17) et des MPG élevées pour les rendements et pour les composants


 DAM/MÈRE:
FARNEAR-TBR-BH GEORGIA-ET VG87-2YR USA

 4th DAM/4e MÈRE:
BRIGEEN AER GWYNETH EX93-2E USA GMD DOM
**CAN - GPA/MPG
 12/2015**

Milk/Lait kg	1536
Fat/Gras kg	91
Fat/Gras %	+.33
Prot. kg	70
Prot. %	+.17
SCS/CS	2.93
Conformation	13
LPI/IPV	3307



IHG GRYFFINDOR-ET PB 0200HO10488
 HOUSAM73963336 *CVF*RDF*BYF*BLF*DPF*CNF ET B:2014 Aug 16
 CAN-GPA Dec*15 70%Rel GPA LPI+3307/65%
 KG M+1536/91% F+91/99% %F+0.33 PRO\$
 SCS 2.93 P+70/98% %P+0.17 +2408
 CAN-GPA Dec*15 66%Rel Conf+13
 MS+13 F&L+15 DS+5 R-1

Prepared for:
 THE SEMEX ALLIANCE
 GUELPH ON
 Tel: 519-821-5060

4th-7th Maternal Dam
 BRIGREEN AER GWYNETH EX-93-2E-USA
 BRIGREEN INTEGRITY GWEN-ET VG-86-3YR-USA
 ROYLANE LEADMAN GLORY-ET VG-89-2YR-USA
 WESTERN-CASCADE MARK BELLA EX-91-4YR-USA

Herd Life/Durée de vie 109
 Daughter Fertility/Fertilité des filles 104
 Calving Ability/Aptitude au vêlage 107

S-S-I MOGUL DEFENDER-ET PB
 HO840M3009554569 *CVF*BYF*BLF*DPF ET
 CAN-GPA Dec*15 78%Rel GPA LPI+3003/73%
 KG M+1211/81% F+67/93% %F+0.21 PRO\$
 SCS 2.85 P+51/91% %P+0.10 +1941
 CAN-GPA Dec*15 74%Rel Conf+13
 MS+14 F&L+12 DS+4 R+0

MOUNTFIELD SSI DCY MOGUL-ET PB
 HO840M3006972816 *CVF*RDF*BYF*BLF*DPF ET
 EXTRA'15
 CAN-GEBV Dec*15 96%Rel GLPI+2926/89%
 KG M+1449 F+90 %F+0.36 P+54 %P+0.05
 CAN-GEBV Dec*15 94%Rel Conf+12

REGAN-BH-ALH M DANNAH-ET PB
 HOUSAF66625308 ET
 EX-90-4YR-USA
 03-05 305 12605 406 3.2 394 3.1
 365 13594 441 3.2 426 3.1
 2 LACT: 30432 1063 3.5 982 3.2 KG

COYNE-FARMS DORCY-ET PB
 HOUSAM139005002 *BYC*CVF*BLF ET
 ST'15

MOUNTFIELD MARSH MAXINE-ET PB
 HOUSAF62784081 ET
 VG-88-2YR-USA DOM

LONG-LANGS OMAN OMAN-ET PB
 HOUSAM135746776 *CVF*BYF*BLF ET
 VG-85-4YR-USA GM'10 EXTRA'12

WINDSOR-MANOR Z-DELIGHT-ET PB
 HOUSAF135722170 *CVF ET
 EX-93-2E-USA GMD DOM 4*(0/24)

FARNEAR-TBR-BH GEORGIA-ET PB
 HOUSAF71290949 *BLF*DPF ET B:2012 Nov 04
 VG-87-2YR-USA
 GMACE Dec*15 75%Rel GMLPI+3285/70%
 KG M+1677/98% F+60/96% %F-0.02 PRO\$
 SCS 2.84 P+61/99% %P+0.05 +2265
 GMACE Dec*15 71%Rel Conf+16/99%
 MS+15 F&L+13 DS+11 R+3
 02-02 96 3892 196 5.0 122 3.1
 1 LACT: 3892 196 5.0 122 3.1 KG

DE-SU BKM MCCUTCHEN 1174-ET PB
 HOUSAM69990138 *CVF*BYF*BLF*DPF ET
 EX-92-3YR-USA ST'15
 CAN-GEBV Dec*15 95%Rel GLPI+3185/87%
 KG M+984 F+66 %F+0.30 P+44 %P+0.10
 CAN-GEBV Dec*15 91%Rel Conf+17

B-ENTERPRISE SUPER GIGI-ET PB
 HOUSAF69386235 ET
 VG-88-4YR-USA
 02-03 305 14610 489 3.3 455 3.1
 04-02 305 17699 487 2.8 527 3.0
 2 LACT: 35208 1071 3.0 1080 3.1 KG
 Progeny Data: 0EX 2VG 0GP 0G 0F
 2 DAUS ME AVG: 15244 610 4.0 490 3.2
 AVG BCA: M288 F313 P296

DE-SU 521 BOOKEM-ET PB
 HOUSAM66636657 *CVF*RDF*BYF*BLF*DPF ET

SULLY SHOTTLE MAY-TW PB
 HOUSAF138218285 MB
 EX-90-6YR-USA DOM 6*(0/31)

CHARLESDALE SUPERSTITION-ET PB
 HOUSAM62065919 *CVF*RDF*BYF*BLF*DPF ET
 GM'12

BRIGREEN OUTSIDE GIGI PB
 HOUSAF131353482
 EX-90-2E-USA DOM GMD
 05-08 305 23342 989 4.2 724 3.1
 365 27288 1144 4.2 853 3.1
 3 LACT: 75787 2994 4.0 2388 3.2 KG

The information herein contained is based upon the records maintained by the Holstein Association of Canada. The accuracy of the information is not guaranteed and is subject to correction according to the Association's By-laws.

L'information contenue dans la présente est fondée sur les registres tenus à jour par l'Association Holstein du Canada. L'exactitude de cette information n'est pas garantie et est assujettie à des corrections conformément aux Statuts de l'Association.

EastGen

Invested in your future.



Dam: OCD PLANET DIAMOND-ET VG-88-6YR-CAN 8*



Dam: AMITIES MAN O MAN LOVELY VG-85-4YR-CAN 1*

Genomax™
Leading Genetics

CLAYNOOK 0200HO02985

DELAWARE

HUNTER X PLANET

HealthSmart™

SIRE: COOKIECUTTER MOM HUNTER-ET

DAM: OCD PLANET DIAMOND-ET

MGS: ENSENADA TABOO PLANET-ET

GPA LPI/IPV MPG +2848

M/L +1054

F/G +53 (+.16)

P +49 (+.13)

Conformation +12

SCS/CS 2.75

Calving Ability/Apt. au vêlage 102

AMITIES 0200HO06517

LOVERMAN

EPIC X MAN-O-MAN

Calving Ease™

A2A2

Sexxed™

SIRE: GENERVATIONS EPIC

DAM: AMITIES MAN O MAN LOVELY

MGS: LONG-LANGS OMAN OMAN-ET

GPA LPI/IPV MPG +2779

M/L +909

F/G +38 (+.05)

P +51 (+.19)

Conformation +12

SCS/CS 3.01

Calving Ability/Apt. au vêlage 104

SEMEX®



www.eastgen.ca

EastGen

Invested in your future.



Dam: OCD PLANET DIAMOND-ET VG-88-6YR-CAN 8*



Grandam: MISS ELEGANT DELIGHT-ET VG-88-2YR-USA 1*

Technician's Choice

Genomax Plus™

0200H002935

CLAYNOOK

DEDUCTIVE

NUMERO UNO X PLANET

 **Immunity+**™

 **Repromax**™

 **HealthSmart**™

 **Robot Ready**™

 **Calving Ease**™

 **A2A2**

SIRE: AMIGHETTI NUMERO UNO ET

DAM: OCD PLANET DIAMOND-ET

MGS: ENSENADA TABOO PLANET-ET

GPA LPI/IPV MPG +3057

M/L +1217

F/G +73 (+.26)

P +47 (+.06)

Conformation +12

SCS/CS 2.75

Calving Ability/Apt. au vêlage 107

Bull Fertility/Fertilité du taureau 63 Rel 58%

SEMEX
Genetics for Life®



www.eastgen.ca

At EastGen, we challenge ourselves to constantly advance the dairy industry.