

Semen Sales: Genomic bull availability can change on a daily basis. To reserve semen on a specific sire on a first-come-first-serve basis or learn more about availability, call your local EastGen Regional Sales Representative.

Ventes de semence : La disponibilité des taureaux génomiques peut changer tous les jours. Pour réserver la semence d'un taureau spécifique selon le principe de premier arrivé, premier servi, communiquez avec votre représentant commercial régional d'EastGen.

Insemination Service: Keep this list by your phone. Call EastGen's dispatch to find out which Premier Program Genomic Sires will be available today.

Service d'insémination : Gardez cette liste près de votre téléphone. Appelez le service de répartition d'EastGen pour savoir quels taureaux génomiques du programme Premier seront disponibles aujourd'hui.

To reference individual extended pedigrees on each bull please go to www.eastgen.ca and click on Premier Program button on the home page.

Pour accéder à la généalogie individuelle de chaque taureau, veuillez vous rendre à www.eastgen.ca et cliquer sur bouton du Programme Premier dans la page d'accueil.



WESTCOAST SORBONNE

0200HO10647 HOCANM12283181
 SIRE: SEAGULL-BAY SILVER
 DAM: MS SUNVIEW COIN SUNDROP
 MGS: FARNEAR-TBR-BH CASHCOIN
 MGGs: FLEVO GENET. SNOWMAN
 GPA LPI/IPV MPG +3241 PRO\$ \$2527
 M/L +1818 F/G +93 (+0.26) P +65 (+0.05)
 Conf. +13 SCS/CS 2.63
 Calving Ability/Apt. au vêlage 105

Retail: \$30



You Pay * \$12



WALNUTLAWN BAUTISTA

0200HO10682 HOCANM11776105
 SIRE: SILVERRIDGE V ENTAIL
 DAM: WALNUTLAWN DOORMAN BREANNA
 MGS: VAL-BISSON DOORMAN
 MGGs: MAPLE-DOWNS-I G W ATWOOD
 GPA LPI/IPV MPG +2983 PRO\$ \$1771
 M/L +1847 F/G +60 (-0.10) P +65 (+0.03)
 Conf. +16 SCS/CS 2.81
 Calving Ability/Apt. au vêlage 103

Retail: \$35



You Pay * \$14



WELCOME PRESSURE

0200HO10766 HO840M3129340745
 SIRE: LADYS-MANOR DOORSOPEN
 DAM: WELCOME SUPERSIRE PERNA
 MGS: SEAGULL-BAY SUPERSIRE
 MGGs: END-ROAD O-MAN BRONCO
 GPA LPI/IPV MPG +3214 PRO\$ \$2367
 M/L +1370 F/G +93 (+0.41) P +70 (+0.22)
 Conf. +12 SCS/CS 2.71
 Calving Ability/Apt. au vêlage 98

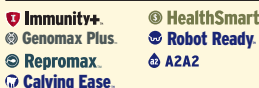
Retail: \$38



You Pay * \$16

Technician's Choice ⇨ Genomax Plus = High Fertility + Calving Ease

You Pay \$18



PROGENESIS FALCON

0200HO10320 HOCANM108881795
 SIRE: CLAYNOOK DEDUCTIVE
 DAM: OCD MOGUL FUZZY NAVEL
 MGS: MOUNTFIELD SSI DCY MOGUL
 GPA LPI/IPV MPG +3171 PRO\$ \$2308
 M/L +1231 F/G +85 (+0.35) P +52 (+.10)
 Conf. +12 SCS/CS 2.81
 Calving Ability/Apt. au vêlage 104 Rel 88%
 Bull Fertility/ Fertilité du taureau 61 Rel 82%

You Pay \$16



WESTCOAST KERRIGAN

0200HO10577 HOUSAM74414205
 SIRE: MORNINGVIEW MCC KINGBOY
 DAM: EDG RUBY UNO RIZA
 MGS: AMIGHETTI NUMERO UNO
 GPA LPI/IPV MPG +3182 PRO\$ \$2389
 M/L +1808 F/G +80 (+0.11) P +70 (+.09)
 Conf. +10 SCS/CS 2.80
 Calving Ability/Apt. au vêlage 101 Rel 78%
 Bull Fertility/ Fertilité du taureau 61 Rel 35%

ELITE TYPE



You Pay \$20

"While supplies last"

PROGENESIS KEVIN

0200HO10699 HOCANM12302957
 SIRE: SILVERRIDGE V ELUDE
 DAM: PROGENESIS ALTA5G KARLY
 MGS: MR LOOKOUT PESCE ALTA5G
 GPA LPI/IPV MPG +3222 PRO\$ \$2077
 M/L +1482 F/G +53 (-0.03) P +51 (0.00)
 Conf. +16 SCS/CS 2.70
 Calving Ability/Apt. au vêlage 105

ELITE GLPI



You Pay \$20

"While supplies last"

VOGUE MANSFIELD

0200HO10750 HOCANM12187036
 SIRE: COGENT SUPERSHOT
 DAM: SNOWBIZ MCCUTCHEN LOTTIE
 MGS: DE-SU BKM MCCUTCHEN 1174
 GPA LPI/IPV MPG +3303 PRO\$ \$2528
 M/L +1965 F/G +62 (-0.12) P +71 (+0.05)
 Conf. +12 SCS/CS 2.59
 Calving Ability/Apt. au vêlage 105

Designations
Désignations

EastGen Premier Program
Programme Premier
GPA/MPG - CDN*12/16
Invested in your future. Engagé à fond dans votre avenir.

Production

Conformation, Health & Management / Caractères de santé et de fertilité

Code / Code	Sire MGS / Père GPM	GPA LPI IPV MPG	Pro \$	Milk / Lait (kg)	Fat / Gras (kg)	% Dev. / Différ.	Protein (kg) Prot.	% Dev. / Différ.	Conformation	Mamm. Syst. Mamm.	F&L Pieds et imbrs	Dairy Strength Puissance laitière	Rump / Croupe	Herd Life Durée de vie	Som Cell Sc. Cell. som.	Mastitis Resistance Résistance à la mammitte	Dau Fertility Fertilité des filles	Milking Speed Vit. traite	Milking Temp. Temp. traite	Calving Ability Apt. au vêlage	Dau Calving Ability Apt. des filles au vêlage	Bull Fertility Fertilité du taureau	
0200H010647	Westcoast SORBONNE	Silver x Cashcoin	3241	2527	1818	93	.26	65	.05	13	13	12	3	0	111	2.63	108	99	104	101	105	109	n/a
0200H010682	Walnutlawn BAUTISTA	Entail x Doorman	2983	1771	1847	60	-.10	65	.03	16	15	11	15	1	102	2.81	104	93	93	102	103	100	n/a
0200H010766	Welcome PRESSURE	Doorsopen x Supersire	3214	2367	1370	93	.41	70	.22	12	11	10	8	4	108	2.71	105	102	99	102	98	107	n/a
Technician's Choice ⇒ Genomax Plus = High Fertility + Calving Ease																							
0200H010320	Progenesis FALCON	Deductive x Mogul	3171	2308	1231	85	.35	52	.10	12	13	13	3	0	111	2.81	104	102	105	107	104	108	61
0200H010577	Westcoast KERRIGAN	Kingboy x Numero Uno	3182	2389	1808	80	.11	70	.09	10	10	9	5	0	109	2.80	105	105	104	104	101	108	61
0200H010699	Progenesis KEVIN	Elude x Alta5g	3222	2077	1482	53	-.03	51	.00	16	16	14	11	0	110	2.70	108	102	100	105	105	103	n/a
0200H010750	Vogue MANSFIELD	Supershot x McCutchen	3303	2528	1965	62	-.12	71	.05	12	10	10	7	5	111	2.59	110	109	98	107	105	113	n/a

Bull Dams

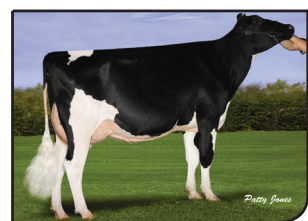
Immunity+ Robot Ready Repromax HealthSmart Calving Ease A2A2 Genomax

Great Grandam of **SORBONNE**



DES-Y-GEN PLANET SILK
EX-90-4YR-USA
04-01 305 12946M 527F 4.1% 424P 3.3%

Grandam of **BAUTISTA**



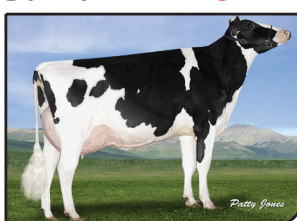
SANDY-VALLEY ATWD BRADY
EX-90-CAN
05-06 305 13412M 562F 4.2% 435P 3.2%

Great Grandam of **PRESSURE**



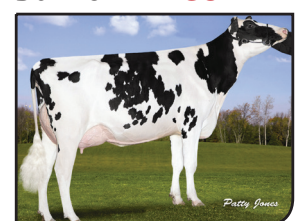
WELCOME GOLDWYN PENYA
VG-89-2YR-USA
02-00 305 13667M 484F 3.5% 447P 3.3%

Dam of **KERRIGAN**



EDG RUBY UNO RIZA
VG-87-2YR-CAN
02-03 305 12636M 459F 3.6% 400P 3.2%

Dam of **FALCON**



OCD MOGUL FUZZY NAVEL
VG-85-2YR-CAN
02-01 305 25810M
1052F 4.1% 821P 3.2%

Great Grandam of **KEVIN**



MS C-HAVEN OMAN KOOL
VG-88-6YR-CAN
05-05 305 17684M
557F 3.2% 571P 3.2%

Dam of **MANSFIELD**



SNOWBIZ MCCUTCHEN LOTTIE
VG-87-2YR-CAN
02-02 305 10854M
416F 3.8% 345P 3.2%