

Semen Sales: Genomic bull availability can change on a daily basis. To reserve semen on a specific sire on a first-come-first-serve basis or learn more about availability, call your local EastGen Regional Sales Representative.

Ventes de semence : La disponibilité des taureaux génomiques peut changer tous les jours. Pour réserver la semence d'un taureau spécifique selon le principe de premier arrivé, premier servi, communiquez avec votre représentant commercial régional d'EastGen.

Insemination Service: Keep this list by your phone. Call EastGen's dispatch to find out which Premier Program Genomic Sires will be available today.

Service d'insémination : Gardez cette liste près de votre téléphone. Appelez le service de répartition d'EastGen pour savoir quels taureaux génomiques du programme Premier seront disponibles aujourd'hui.

To reference individual extended pedigrees on each bull please go to [www.eastgen.ca](http://www.eastgen.ca) and click on Premier Program button on the home page.

Pour accéder à la généalogie individuelle de chaque taureau, veuillez vous rendre à [www.eastgen.ca](http://www.eastgen.ca) et cliquer sur bouton du Programme Premier dans la page d'accueil.



### GEN-I-BEQ KARTING

0200HO10745 HOCANM109522904

SIRE: SILVERRIDGE V ENTAIL  
DAM: OCONNORS SUPER KARMEL  
MGS: SEAGULL-BAY SUPERSIRE  
MGGs: SANDY-VALLEY BOLTON

GPA LPI/IPV MPG +3134 PRO\$ \$2357  
M/L +2414 F/G +81 (-0.10) P +73 (-0.05)  
Conf. +11 SCS/CS 2.66  
Calving Ability/Apt. au vêlage 108

Retail: \$35 A2A2  
You Pay \* \$14



### WESTCOAST HERALD

0200HO10751 HOCANM12283259

SIRE: PLAIN-KNOLL DONA BAYONET  
DAM: COOKIECUTTER HANDRACE  
MGS: CLEAR-ECHO LEXOR RACER  
MGGs: MOUNTFIELD SSI DCY MOGUL

GPA LPI/IPV MPG +3333 PRO\$ \$2651  
M/L +1760 F/G +96 (+0.27) P +78 (+0.18)  
Conf. +10 SCS/CS 2.85  
Calving Ability/Apt. au vêlage 106

Retail: \$35 HealthSmart  
You Pay \* \$14



### WESTCOAST GAELIC

0200HO10756 HOCANM12283251

SIRE: RH SUPERMAN  
DAM: IHG JACEY GRACE  
MGS: COYNE-FARMS JACEY CRI  
MGGs: DE-SU BKM MCCUTCHEN 1174

GPA LPI/IPV MPG +3201 PRO\$ \$2443  
M/L +1378 F/G +83 (+0.30) P +70 (+0.22)  
Conf. +10 SCS/CS 2.89  
Calving Ability/Apt. au vêlage 100

Retail: \$30 HealthSmart Robot Ready  
You Pay \* \$12

## Technician's Choice ⇨ Genomax Plus = High Fertility + Calving Ease

You Pay \$18



Immunity+ HealthSmart  
 Genomax Plus Robot Ready  
 Repromax A2A2  
 Calving Ease

### PROGENESIS FALCON

0200HO10320 HOCANM108881795

SIRE: CLAYNOOK DEDUCTIVE  
DAM: OCD MOGUL FUZZY NAVEL  
MGS: MOUNTFIELD SSI DCY MOGUL  
GPA LPI/IPV MPG +3185 PRO\$ \$2353  
M/L +1195 F/G +83 (+0.33) P +52 (+.11)  
Conf. +11 SCS/CS 2.79

Calving Ability/Apt. au vêlage 102 Rel 90%  
Bull Fertility/ Fertilité du taureau 61 Rel 85%

You Pay \$16



Immunity+ HealthSmart  
 Robot Ready A2A2

### WESTCOAST KERRIGAN

0200HO10577 HOUSAM74414205

SIRE: MORNINGVIEW MCC KINGBOY  
DAM: EDG RUBY UNO RIZA  
MGS: AMIGHETTI NUMERO UNO  
GPA LPI/IPV MPG +3167 PRO\$ \$2349  
M/L +1626 F/G +71 (+0.10) P +66 (+.10)  
Conf. +9 SCS/CS 2.78

Calving Ability/Apt. au vêlage 102 Rel 79%  
Bull Fertility/ Fertilité du taureau 61 Rel 58%

## ELITE TYPE



You Pay \$20

"While supplies last"

### PROGENESIS KEVIN

0200HO10699 HOCANM12302957

SIRE: SILVERRIDGE V ELUDE  
DAM: PROGENESIS ALTA5G KARLY  
MGS: MR LOOKOUT PESCE ALTA5G

GPA LPI/IPV MPG +3189 PRO\$ \$2046  
M/L +1365 F/G +50 (-0.02) P +48 (+0.02)  
Conf. +15 SCS/CS 2.69  
Calving Ability/Apt. au vêlage 104

## ELITE TYPE



You Pay \$26

"While supplies last"

### OCONNORS CLASSIC

0200HO10631 HOCANM12111803

SIRE: ZAHBULLS ALTA1STCLASS  
DAM: SNOWBIZ MCCUTCHEN LOTTIE  
MGS: DE-SU BKM MCCUTCHEN 1174

GPA LPI/IPV MPG +3252 PRO\$ \$2210  
M/L +1347 F/G +65 (+0.14) P +52 (+0.07)  
Conf. +16 SCS/CS 2.81  
Calving Ability/Apt. au vêlage 102

**Designations**  
Désignations

**EastGen**  
Invested in your future. Engagé à fond dans votre avenir.

**Premier Program**  
Programme Premier  
GPA/MPG - CDN\*4/17

**Production**

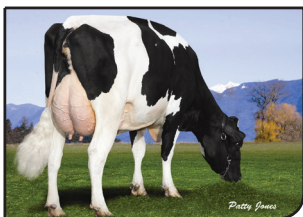
**Conformation, Health & Management / Caractères de santé et de fertilité**

Code / Code	Sire MGS / Père GPM	GPA LPI IPV MPG	Pro \$	Milk / Lait (kg)	Fat / Gras (kg)	% Dev. / Différ.	Protein (kg) Prot.	% Dev. / Différ.	Conformation	Mamm. Syst. Mamm.	F&L Pieds et mbres	Dairy Strength Puissance laitière	Rump / Croupe	Herd Life Durée de vie	Som Cell Sc. Cell. som.	Mastitis Resistance Résistance à la mammitte	Dau Fertility Fertilité des filles	Milking Speed Vit. traite	Milking Temp. Temp. traite	Calving Ability Apt. au vêlage	Dau Calving Ability Apt. des filles au vêlage	Bull Fertility Fertilité du taureau	
0200H010745	Gen-I-Beq <b>KARTING</b>	Entail x Supersire	3134	2357	2414	81	-.10	73	-.05	11	10	9	7	1	106	2.66	105	98	95	104	108	107	n/a
0200H010751	Westcoast <b>HERALD</b>	Bayonet x Racer	3333	2651	1760	96	.27	78	.18	10	11	4	4	2	109	2.85	103	108	104	104	106	103	n/a
0200H010756	Westcoast <b>GAELIC</b>	Superman x Jacey	3201	2443	1378	83	.30	70	.22	10	9	7	4	4	109	2.89	104	105	105	105	100	107	n/a
<b>Technician's Choice ⇒ Genomax Plus = High Fertility + Calving Ease</b>																							
0200H010320	Progenesis <b>FALCON</b> A2A2	Deductive x Mogul	3185	2353	1195	83	.33	52	.11	11	12	12	2	0	111	2.79	104	101	104	107	102	108	61
0200H010577	Westcoast <b>KERRIGAN</b> A2A2	Kingboy x Numero Uno	3167	2349	1626	71	.10	66	.10	9	10	8	4	0	108	2.78	104	105	102	103	102	108	61
<b>Genomax.</b>																							
0200H010699	Progenesis <b>KEVIN</b>	Elude x 5g	3189	2046	1365	50	-.02	48	.02	15	15	12	10	0	109	2.69	108	101	100	104	104	103	n/a
0200H010631	Oconnors <b>CLASSIC</b> A2A2	1stclass x McCutchen	3252	2210	1347	65	.14	52	.07	16	16	13	7	2	107	2.81	105	102	103	107	102	104	54

**Bull Dams**

Immunity+ Robot Ready Repromax HealthSmart Calving Ease A2A2 Genomax.

Mat. Grandam of **KARTING**



WIAMY KYANA BOLTON  
VG-88-3YR-CAN 8\*  
03-03 305 15778M 879F 5.6% 509 3.2%

Great Grandam of **HERALD**



COOKIECUTTER MOM HALO-ET  
VG-88-2YR-USA  
02-00 305 14093M 729F 5.2% 510P 3.6%

Dam of **GAELIC**



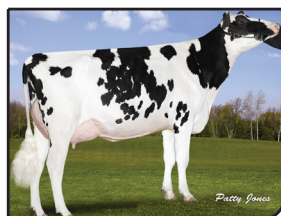
IHG JACEY GRACE-ET  
VG-85-2YR-CAN  
02-01 ACT 11168M 473F 4.2% 391P 3.5%

Dam of **KERRIGAN**



EDG RUBY UNO RIZA  
VG-87-2YR-CAN  
02-03 305 12636M 459F 3.6% 400P 3.2%

Dam of **FALCON**



OCD MOGUL FUZZY NAVEL  
VG-85-2YR-CAN  
02-01 305 25810M  
1052F 4.1% 821P 3.2%

Great Grandam of **KEVIN**



MS C-HAVEN OMAN KOOL  
VG-88-6YR-CAN  
05-05 305 17684M  
557F 3.2% 571P 3.2%

Dam of **CLASSIC**



SNOWBIZ MCCUTCHEN LOTTIE  
VG-87-2YR-CAN  
02-02 305 10854M  
416F 3.8% 345P 3.2%