

Semen Sales: Genomic bull availability can change on a daily basis. To reserve semen on a specific sire on a first-come-first-serve basis or learn more about availability, call your local EastGen Regional Sales Representative.

Ventes de semence : La disponibilité des taureaux génomiques peut changer tous les jours. Pour réserver la semence d'un taureau spécifique selon le principe de premier arrivé, premier servi, communiquez avec votre représentant commercial régional d'EastGen.

Insemination Service: Keep this list by your phone. Call EastGen's dispatch to find out which Premier Program Genomic Sires will be available today.

Service d'insémination : Gardez cette liste près de votre téléphone. Appelez le service de répartition d'EastGen pour savoir quels taureaux génomiques du programme Premier seront disponibles aujourd'hui.

To reference individual extended pedigrees on each bull please go to [www.eastgen.ca](http://www.eastgen.ca) and click on Premier Program button on the home page.

Pour accéder à la généalogie individuelle de chaque taureau, veuillez vous rendre à [www.eastgen.ca](http://www.eastgen.ca) et cliquer sur bouton du Programme Premier dans la page d'accueil.

## Technician's Choice ⇒ Genomax Plus = High Fertility + Calving Ease

You Pay \$15



Immunity+  
Genomax Plus  
Repromax

HealthSmart  
Calving Ease  
A2A2

### EVER-GREEN-VIEW EDIFY

0200HO10185 HOUSAM72773395  
SIRE: VAL-BISSON DOORMAN  
DAM: EVER-GREEN-VIEW EANO  
MGS: REGANCREST ALTAIOTA  
GPA LPI/IPV MPG +3001  
M/L +733 F/G +91 (+0.59) P +54 (+.26)  
Conf. +9 SCS/CS 2.82  
Calving Ability/Apt. au vêlage 109 Rel 84%  
Bull Fertility/ Fertilité du taureau 63 Rel 72%

You Pay \$18



Immunity+  
Genomax  
Repromax

HealthSmart  
Robot Ready  
A2A2

### PROGENESIS FALCON

0200HO10320 HOCANM108881795  
SIRE: CLAYNOOK DEDUCTIVE  
DAM: OCD MOGUL FUZZY NAVEL  
MGS: MOUNTFIELD SSI MOGUL  
GPA LPI/IPV MPG +3195  
M/L +1315 F/G +92 (+0.38) P +57 (+.12)  
Conf. +12 SCS/CS 2.80  
Calving Ability/Apt. au vêlage 104 Rel 73%  
Bull Fertility/ Fertilité du taureau 62 Rel 79%



Retail: \$30  
You Pay \* \$12

Immunity+  
HealthSmart  
Robot Ready

### WESTCOAST BERLIOZ

0200HO10642 HOCANM12283189  
SIRE: VIEW-HOME MONTEREY  
DAM: BLUE-HORIZON JCKMN BABYDUST  
MGS: DE-SU JACKMAN  
MGGS: DE-SU 521 BOOKEM  
GPA LPI/IPV MPG +3092  
M/L +1112 F/G +55 (+0.14) P +53 (+0.16)  
Conf. +12 SCS/CS 2.66  
Calving Ability/Apt. au vêlage 102



Retail: \$38  
You Pay \* \$16

HealthSmart

### CHARPENTIER COINMONEY

0200HO10679 HOCANM109565458  
SIRE: ZAHBULLS 1STCLASS  
DAM: FARNEAR-TBR-BH COIN  
MGS: DE-SU BKM MCCUTCHEN 1174  
MGGS: DE-SU OBSERVER  
GPA LPI/IPV MPG +3220  
M/L +983 F/G +69 (+0.30) P +42 (+0.10)  
Conf. +16 SCS/CS 2.72  
Calving Ability/Apt. au vêlage 104



Retail: \$30  
You Pay \* \$12

Immunity+  
Robot Ready

### PROGENESIS HIJACK

0200HO10604 HOCANM12108722  
SIRE: VIEW-HOME MONTEREY  
DAM: COOKIECUTTER AOAK HAWAII  
MGS: PINE-TREE OAK  
MGGS: LONG-LANGS OMAN OMAN  
GPA LPI/IPV MPG +3117  
M/L +1359 F/G +85 (+0.33) P +64 (+0.18)  
Conf. +12 SCS/CS 2.79  
Calving Ability/Apt. au vêlage 103

## GENOMAX



You Pay \$12

Calving Ease  
A2A2

### LINDENRIGHT MEGAWATT<sup>HCD</sup>

0200HO10222 HOCANM108657338  
SIRE: MR LOOKOUT P ENFORCER  
DAM: LINDENRIGHT BRADNICK MOOVIN ON  
MGS: REGANCREST-GV S BRADNICK  
GPA LPI/IPV MPG +3020  
M/L +660 F/G +47 (+0.26) P +43 (+0.19)  
Conf. +13 SCS/CS 2.96  
Calving Ability/Apt. au vêlage 105

## ELITE TYPE



You Pay \$20

### RAYON D'OR KASHMIR

0200HO10634 HOCANM108920733  
SIRE: KERNDTWAY KINGPIN  
DAM: DE-SU 9842  
MGS: MAPLE-DOWNS-I G W ATWOOD  
GPA LPI/IPV MPG +3221  
M/L +666 F/G +64 (+.38) P +46 (+0.22)  
Conf. +17 SCS/CS 2.59  
Calving Ability/Apt. au vêlage 101

## ELITE LPI



You Pay \$20

HealthSmart  
Robot Ready

### SILVERRIDGE V GORDON

0200HO10621 HOCANM12328314  
SIRE: SEAGULL-BAY SILVER  
DAM: SILVERRIDGE V MCCUT EXCITED  
MGS: DE-SU BKM MCCUTCHEN 1174  
GPA LPI/IPV MPG +3322  
M/L +2074 F/G +67 (-0.08) P +77 (+0.08)  
Conf. +14 SCS/CS 2.92  
Calving Ability/Apt. au vêlage 105

Designations Désignations	Premier Program - East Programme Premier - est GPA/MPG - CDN*08/16 Invested in your future. Engagé à fond dans votre avenir.		Production							Conformation, Health & Management / Caractères de santé et de fertilité														
	Code / Code	Sire MGS / Père GPM	GPA LPI IPV MPG	Pro \$	Milk / Lait (kg)	Fat / Gras (kg)	% Dev. / Différ.	Protein (kg) Prot.	% Dev. / Différ.	Conformation	Mamm. Syst. Mamm.	F&L Pieds et mbres	Dairy Strength Puissance laitière	Rump / Croupe	Herd Life Durée de vie	Som Cell Sc. Cell. som.	Mastitis Resistance Résistance à la mammitte	Dau Fertility Fertilité des filles	Milking Speed Vit. traite	Milking Temp. Temp. traite	Calving Ability Apt. au vêlage	Dau Calving Ability Apt. des filles au vêlage	Bull Fertility Fertilité du taureau	
🇩🇪 🇨🇦 🇺🇸	0200H010642	Westcoast BERLIOZ	Monterey x Jackman	3092	2108	1112	55	.14	53	.16	12	11	10	5	4	110	2.66	108	106	101	105	102	106	n/a
🇨🇦 🇺🇸	0200H010679	Charpentier COINMONEY	1stclass x Mccutchen	3220	2122	983	69	.30	42	.10	16	18	13	4	-1	109	2.72	107	104	103	107	104	107	n/a
🇩🇪 🇨🇦 🇺🇸	0200H010604	Progenisis HIJACK	Monterey x Oak	3117	2104	1359	85	.33	64	.18	12	11	7	10	0	107	2.79	101	105	100	104	103	106	n/a
<b>Technician's Choice ⇒ Genomax Plus = High Fertility + Calving Ease</b>																								
🇩🇪 🇨🇦 🇺🇸	0200H010185	Ever-Green-View EDIFY  A2A2	Doorman x Iota	3001	1881	733	91	.59	54	.26	9	9	7	8	6	106	2.82	105	103	93	100	109	106	63
🇩🇪 🇨🇦 🇺🇸	0200H010320	Progenisis FALCON  A2A2	Deductive x Mogul	3195	2352	1315	92	.38	57	.12	12	11	12	3	1	110	2.80	105	104	104	106	104	107	62
<b>Genomax.</b>																								
🇩🇪 🇨🇦	0200H010222	Lindenright MEGAWATT  A2A2	Enforcer x Bradnick	3020	1792	660	47	.26	43	.19	13	10	14	6	6	110	2.96	102	107	100	106	105	104	59
🇨🇦	0200H010634	Rayon D'or KASHMIR	Kingpin x G W Atwood	3221	1996	666	64	.38	46	.22	17	17	12	12	0	107	2.59	108	104	99	105	101	104	n/a
🇨🇦 🇺🇸	0200H010621	Silverridge V GORDON	Silver x Mccutchen	3322	2466	2074	67	-.08	77	.08	14	12	17	9	3	109	2.92	105	101	104	105	105	108	n/a

**Bull Dams** Immunity+ Robot Ready Repromax HealthSmart Calving Ease A2A2 Genomax.

Dam of **BERLIOZ**



BLUE-HORIZON JCKMN BABYDUST  
VG-87-3YR-CAN  
02-07 P151 13916M 620F 4.5% 475P 3.4%

Great Grandam of **COINMONEY**



MS CHASSITY GOLDWYN CASH  
EX-91-CAN  
02-04 305 15406M 652F 4.2% 500P 3.3%

Grandam of **HIJACK**



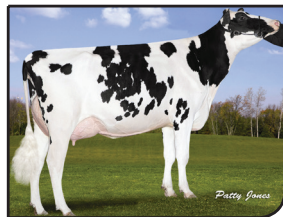
COOKIECUTTER MOM HALO  
VG-88-2YR-USA  
02-00 305 14093M 729F 5.2% 510P 3.6%

Dam of **EDIFY**



EVER-GREEN-VIEW EANO  
GP-83-3YR-USA

Dam of **FALCON**



OCD MOGUL FUZZY NAVEL  
VG-85-2YR-CAN  
02-01 305 25810M  
1052F 4.1% 821P 3.2%

Dam of **Megawatt**



LINDENRIGHT BRADNICK MOOVIN ON  
VG-87-2YR-CAN  
02-00 305 11887M  
596F 5.0% 381P 3.2%

Dam of **KASHMIR**



DE-SU 9842  
VG-86-2YR-CAN  
02-07 305 10194M  
510F 5.0% 354P 3.5%

Grandam of **GORDON**



VELTHUIS SG SNOW EVENT  
VG-86-3YR-CAN  
03-00 305 15398M  
534F 3.5% 483P 3.1%