

Semen Sales: Genomic bull availability can change on a daily basis. To reserve semen on a specific sire on a first-come-first-serve basis or learn more about availability, call your local EastGen Regional Sales Representative. **Ventes de semence :** La disponibilité des taureaux génomiques peut changer tous les jours. Pour réserver la semence d'un taureau spécifique selon le principe de premier arrivé, premier servi, communiquez avec votre représentant commercial régional d'EastGen.

Insemination Service: Keep this list by your phone. Call EastGen's dispatch to find out which Premier Program Genomic Sires will be available today. **Service d'insémination :** Gardez cette liste près de votre téléphone. Appelez le service de répartition d'EastGen pour savoir quels taureaux génomiques du programme Premier seront disponibles aujourd'hui.

To reference individual extended pedigrees on each bull please go to www.eastgen.ca and click on Premier Program button on the home page. Pour accéder à la généalogie individuelle de chaque taureau, veuillez vous rendre à www.eastgen.ca et cliquer sur bouton du Programme Premier dans la page d'accueil.



OCONNORS SEQUENCE

0200HO10632 HOCANM12111829

SIRE: VIEW-HOME MONTEREY
DAM: MORSAN MOGUL SPOOKY
MGS: MOUNTFIELD SSI MOGUL
MGGS: LONG-LANGS OMAN OMAN

GPA LPI/IPV MPG +3197
M/L +1317 F/G +84 (+0.33) P +62 (+0.17)
Conf. +14 SCS/CS 2.91
Calving Ability/Apt. au vêlage 104

Retail: \$35 HealthSmart.

You Pay * \$14



MORSAN CARGO

0200HO10559 HOCANM12130478

SIRE: MORNINGVIEW MCC KINGBOY
DAM: MS CHASSITY NU COMPLETE
MGS: AMIGHETTI NUMERO UNO
MGGS: PICSTON SHOTTLE

GPA LPI/IPV MPG +3221
M/L +1467 F/G +93 (+0.36) P +58 (+0.08)
Conf. +11 SCS/CS 2.69
Calving Ability/Apt. au vêlage 101

Retail: \$30 Immunity+
 Robot Ready.
You Pay * \$12 A2A2



LADYS-MANOR SCEPTRE

0200HO10570 HO840M3127297176

SIRE: ZAHBULLS ALTA1STCLASS
DAM: LADYS-MANOR SS SNOWSTORM
MGS: SEAGULL-BAY SUPERSIRE
MGGS: LADYS-MANOR RUBY D SHAWN

GPA LPI/IPV MPG +3172
M/L +1893 F/G +107 (+0.35) P +73 (+0.08)
Conf. +10 SCS/CS 2.69
Calving Ability/Apt. au vêlage 105

Retail: \$30
You Pay * \$12



WESTCOAST WINDMILL

0200HO10610 HOCANM12130518

SIRE: COGENT SUPERSHOT
DAM: VIEW-HOME DRMAN WSCONSIN
MGS: VAL-BISSON DOORMAN
MGGS: ROYLANE SOCRA ROBUST

GPA LPI/IPV MPG +3274
M/L +1425 F/G +92 (+0.35) P +73 (+0.23)
Conf. +12 SCS/CS 2.46
Calving Ability/Apt. au vêlage 106

Retail: \$35 HealthSmart.
 A2A2
You Pay * \$14

Technician's Choice ⇒ Genomax Plus = High Fertility + Calving Ease

You Pay \$15



Immunity+ HealthSmart.
 Genomax Plus Calving Ease.
 Repromax. A2A2

EVER-GREEN-VIEW EDIFY

0200HO10185 HOUSAM72773395

SIRE: VAL-BISSON DOORMAN
DAM: EVER-GREEN-VIEW EANO
MGS: REGANCREST ALTAIOTA

GPA LPI/IPV MPG +3001
M/L +733 F/G +91 (+0.59) P +54 (+.26)
Conf. +9 SCS/CS 2.82
Calving Ability/Apt. au vêlage 109 Rel 84%
Bull Fertility/ Fertilité du taureau 63 Rel 72%

You Pay \$16



Immunity+ HealthSmart.
 Genomax Robot Ready.
 Repromax. A2A2

PROGENESIS FALCON

0200HO10320 HOCANM108881795

SIRE: CLAYNOOK DEDUCTIVE
DAM: OCD MOGUL FUZZY NAVEL
MGS: MOUNTFIELD SSI MOGUL

GPA LPI/IPV MPG +3195
M/L +1315 F/G +92 (+0.38) P +57 (+.12)
Conf. +12 SCS/CS 2.80
Calving Ability/Apt. au vêlage 104 Rel 73%
Bull Fertility/ Fertilité du taureau 62 Rel 79%

GENOMAX



You Pay \$12 Calving Ease.
 A2A2

NORCA SILKY ALONZO

0200HO10140 HOCANM107685055

SIRE: ZANI B. MASCALESE
DAM: NORCA SILKY ALL RIGHT
MGS: LIRR DREW DEMPSEY

GPA LPI/IPV MPG +2910
M/L +699 F/G +67 (+.41) P +39 (+.15)
Conf. +13 SCS/CS 2.46
Calving Ability/Apt. au vêlage 106

ELITE TYPE



You Pay \$20

RAYON D'OR KASHMIR

0200HO10634 HOCANM108920733

SIRE: KERNDTWAY KINGPIN
DAM: DE-SU 9842
MGS: MAPLE-DOWNS-I G W ATWOOD

GPA LPI/IPV MPG +3221
M/L +666 F/G +64 (+.38) P +46 (+0.22)
Conf. +17 SCS/CS 2.59
Calving Ability/Apt. au vêlage 101

ELITE LPI



You Pay \$20 HealthSmart.
 Robot Ready.

SILVERRIDGE V GORDON

0200HO10621 HOCANM12328314

SIRE: SEAGULL-BAY SILVER
DAM: SILVERRIDGE V MCCUT EXCITED
MGS: DE-SU BKM MCCUTCHEN 1174

GPA LPI/IPV MPG +3322
M/L +2074 F/G +67 (-0.08) P +77 (+0.08)
Conf. +14 SCS/CS 2.92
Calving Ability/Apt. au vêlage 105

Designations Désignations	Premier Program - West Programme Premier - ouest		Production								Conformation, Health & Management / Caractères de santé et de fertilité												
	Code / Code	Sire MGS / Père GPM	GPA LPI IPV MPG	Pro \$	Milk / Lait (kg)	Fat / Gras (kg)	% Dev. / Différ.	Protein (kg) Prot.	% Dev. / Différ.	Conformation	Mamm Syst. Mamm.	F&L Pieds et mbres	Dairy Strength Puissance laitière	Rump / Groupe	Herd Life Durée de vie	Som Cell Sc. Cell. som.	Mastitis Resistance Résistance à la mammitte	Dau Fertility Fertilité des filles	Milking Speed Vit. traite	Milking Temp. temp. traite	Calving Ability Apt. au vêlage	Dau Calving Ability Apt. des filles au vêlage	Bull Fertility Fertilité du taureau
0200H010632	Oconnors SEQUENCE	Monterey x Mogul	3197	2307	1317	84	.33	62	.17	14	14	12	7	1	108	2.91	101	102	107	109	104	113	n/a
0200H010559	Morsan CARGO	Kingboy x Numero Uno	3221	2438	1467	93	.36	58	.08	11	11	10	6	4	109	2.69	102	108	100	103	101	111	n/a
0200H010570	Ladys-manor SCEPTRE	Alta1stclass x Supersire	3172	2465	1893	107	.35	73	.08	10	12	7	0	2	107	2.69	105	101	102	106	105	104	n/a
0200H010610	Westcoast WINDMILL	Supershot x Doorman	3274	2476	1425	92	.35	73	.23	12	12	6	7	4	110	2.46	109	104	92	100	106	108	n/a
Technician's Choice ⇒ Genomax Plus = High Fertility + Calving Ease																							
0200H010185	Ever-green-view EDIFY	Doorman x Altaiota	3001	1881	733	91	.59	54	.26	9	9	7	8	6	106	2.82	105	103	93	100	109	106	63
0200H010320	Progenisis FALCON	Deductive x Mogul	3195	2352	1315	92	.38	57	.12	12	11	12	3	1	110	2.80	105	104	104	106	104	107	62
Genomax																							
0200H010140	Norca Silky ALONZO	Mascalese x Dempsey	2910	1840	699	67	.41	39	.15	13	11	12	5	2	106	2.46	109	99	106	102	106	106	59
0200H010634	Rayon D'or KASHMIR	Kingpin x G W Atwood	3221	1996	666	64	.38	46	.22	17	17	12	12	0	107	2.59	108	104	99	105	101	104	n/a
0200H010621	Silverridge V GORDON	Silver x Mccutchen	3322	2466	2074	67	-.08	77	.08	14	12	17	9	3	109	2.92	105	101	104	105	105	108	n/a

Bull Dams

Dam of **SEQUENCE**



MORSAN MOGUL SPOOKY
VG-86-2YR-CAN
02-03 305 11247M 523F 4.7% 365P 3.3%

Grandam of **CARGO**



REGANCREST S CHASSITY
EX-92-4YR-USA
03-10 305 16629M 716F 4.3% 450P 2.7%

Dam of **SCEPTRE**



LADYS-MANOR SS SNOWSTORM
GP-83-2YR-USA

Grandam of **WINDMILL**



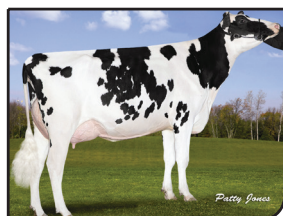
PINE-TREE 2149ROBST 4846
VG-86-3YR-USA 1*
02-04 305 12297M 597F 4.9% 417P 3.4%

Dam of **EDIFY**



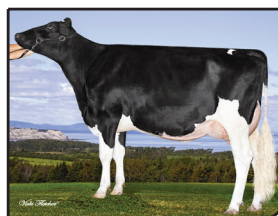
EVER-GREEN-VIEW EANO
GP-83-3YR-USA

Dam of **FALCON**



OCD MOGUL FUZZY NAVEL
VG-85-2YR-CAN
02-01 305 25810M
1052F 4.1% 821P 3.2%

Dam of **ALONZO**



NORCA SILKY ALL RIGHT
VG-85-2YR-CAN
03-04 305 13010M
614F 4.7% 433P 3.3%

Dam of **KASHMIR**



DE-SU 9842
VG-86-2YR-CAN
02-07 305 10194M
510F 5.0% 354P 3.5%

Grandam of **GORDON**



VELTHUIS SG SNOW EVENT
VG-86-3YR-CAN
03-00 305 15398M
534F 3.5% 483P 3.1%