

Dam: Whittier-CF-Gold Laurel VG-87-3YR-USA

- AEU (11/05/13) 0 daus. 0 herds**

Production

| | AEU | 11/05/13 | 0 daus. | 0 herds |
|---------|-------|----------|---------|---------|
| Milk | +1168 | | | |
| Fat | +22.9 | 4.2 | | |
| Protein | +31.6 | 3.5 | | |

Management

| | AEU | 11/05/13 | 0 daus. | 0 herds |
|--------------------------------|------------|----------|---------|---------|
| BW 51 | Liveweight | BV 93.7 | | |
| Somatic Cell | BV -0.53 | | | |
| Fertility | BV -2.2 | | | |
| Calving Difficulty/Reliability | 3.9/23.9 | | | |
| Gestation BV/Reliability | -3.1/33 | | | |

Conformation

| | AEU | 11/05/13 | 0 daus. | 0 herds |
|--------------------|-------|----------|---------|---------|
| Stature | 2.26 | 32.0 | | |
| Dairy Capacity | 0.26 | 31.0 | | |
| Rump Angle | 0.60 | 31.0 | | |
| Rump Width | 0.68 | 31.0 | | |
| Legs | -0.23 | 27.0 | | |
| Under Support | 0.91 | 32.0 | | |
| Rear Udder | 0.38 | 32.0 | | |
| Rear Udder | 0.89 | 32.0 | | |
| Rear Teat | 0.40 | 32.0 | | |
| Rear Teat | 0.90 | 32.0 | | |
| Udder Overall | 1.04 | 30.0 | | |
| Dairy Conformation | 0.58 | 23.0 | | |

NZMI 151

animal evaluation

- 
- Patty Jones*
- Dam: Wabsh-Way Evett VG-86-2YR-CAN

A.B. Code 112918

**MR CHARTROI
LAURENTO**

SNOWMAN x GOLDWYN

Frank Robinson

Sunset Canyon Renegade C Maid VG-87-2YR-CAN

- PRODUCTION**

AEU (11/05/13) 0 daus. 0 herds

NZMI
84

animal
evaluation

Production Summary:

| | AEU | Live/BV | 0 daus. | 0 herds |
|--------------------------|--------|--------------|---------|---|
| Milk | -275 | %BV | | |
| Fat | +4.8 | 5.2 | | |
| Protein | -0.8 | 4.0 | | |
| BW | 84 | Live/BV | -53.5 | Total Longevity -63 |
| Somatic Cell BV | 0.05 | Fertility BV | -1.5 | Calving Difficulty/Reliability -2.6/1.0 |
| Gestation BV/Reliability | 1.0/18 | | | |

MANAGEMENT

BV/Rel

| | BV | Rel | Rank | Quality |
|-------------------------|------|------|-------------|-----------|
| Adaptability to Milking | 0.06 | 15.0 | slowly | quickly |
| Shed Temperament | 0.12 | 15.0 | nervous | placid |
| Milking Speed | 0.16 | 15.0 | slow | fast |
| Overall Farmer Opinion | 0.10 | 15.0 | undesirable | desirable |

CONFORMATION

0 daughters Top inspected

| | BV | Rel | Rank | Quality |
|--------------------|-------|------|-------------|-----------|
| Stature | -0.74 | 24.0 | small | tall |
| Dairy Capacity | -0.42 | 24.0 | frail | capacious |
| Rump Angle | 0.00 | 24.0 | high pins | sloping |
| Rump Width | -0.18 | 24.0 | narrow | wide |
| Legs | -0.18 | 23.0 | straight | curved |
| Udder Support | 0.23 | 20.0 | weak | strong |
| Front Udder | 0.34 | 24.0 | loose | firm |
| Rear Udder | 0.57 | 24.0 | low | high |
| Rear Teat | 0.49 | 24.0 | wide | close |
| Rear Teat | 0.29 | 24.0 | wide | close |
| Udder Overall | 0.54 | 23.0 | undesirable | desirable |
| Dairy Conformation | -0.07 | 16.0 | undesirable | desirable |

TOP BREEDING VALUES

-
- Van Niekirk*
Cattle & Horse Sales
- Sister to Dam: Pannoo Manhattan Vanessa EX-92-AUS

A.B. Code 310733

BW

RENEGADE

MAXIMUM x CENTURION

SEMEX®

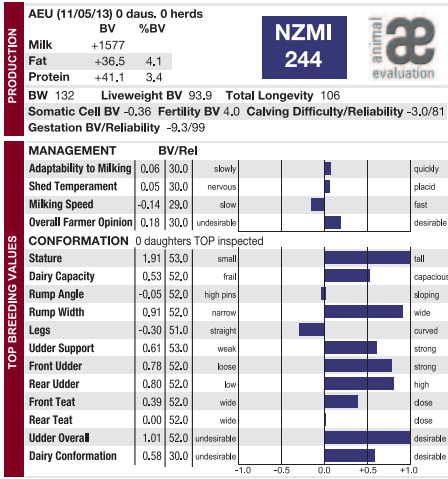
Genetics for Life®

PO Box 248, Morrinsville, NZ 3340 • 14 Allen Street, Morrinsville, NZ

T: 07 889 1572 or 07 889 1573 • F: 07 889 1574

FREE CALL: 0508 473 639 • E: info@semex.co.nz

NEW ZEALAND SUITED SEMEX SIREs



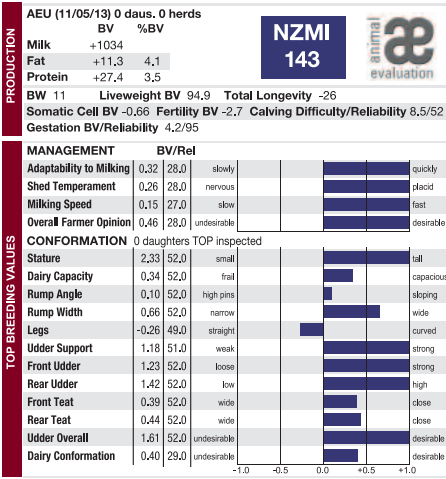
Smith-Hollow Manifold 2042 VG-87-4YR-USA

Repromax
HealthSmart
Calving Ease
Master Series

A.B. Code 110714
MAINSTREAM
MANIFOLD
O MAN x BW MARSHALL

RRP \$32.00
excl. GST

- High NZMI & Protein BV
- Short Gestation Length BV
- Quality Udders
- Repromax – High Fertility Sire



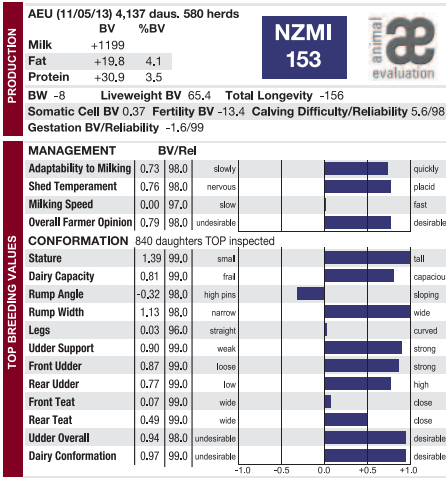
Janot Seaver Shelly EX-90-CAN

Immunity+
Repromax
HealthSmart
Show Time

A.B. Code 110889
R-E-W
SEAVER
GOLDWYN x DURHAM

RRP \$40.00
excl. GST

- Immunity+™ - Disease Resistance
- Great Management Traits
- Tremendous Udder Overall BV
- Repromax – High Fertility Sire



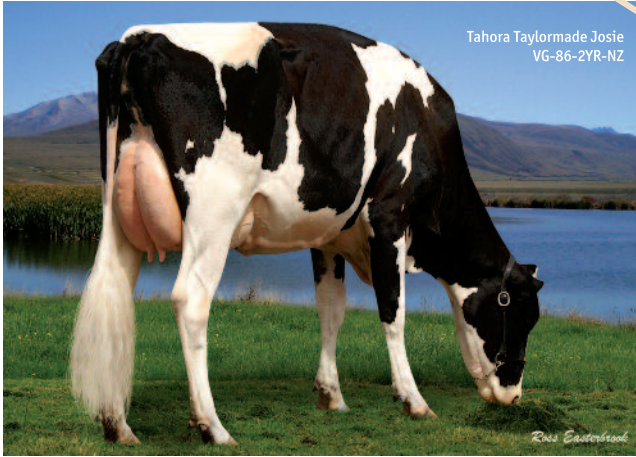
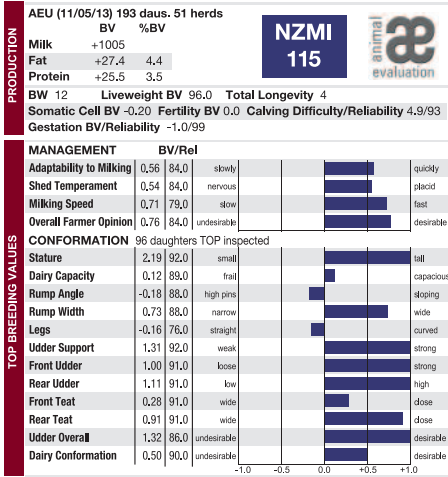
SRC Barwell Monday Erin VG-85-NZ

Calving Ease

A.B. Code 101708
RICECREST
MONDAY
SUPERSIRE x LEADMAN

RRP \$16.00
excl. GST

- Mr Reliable – over 4000 daughters
- Strong Management Traits & Protein BV
- Highly rated for Udders and Overall Conformation

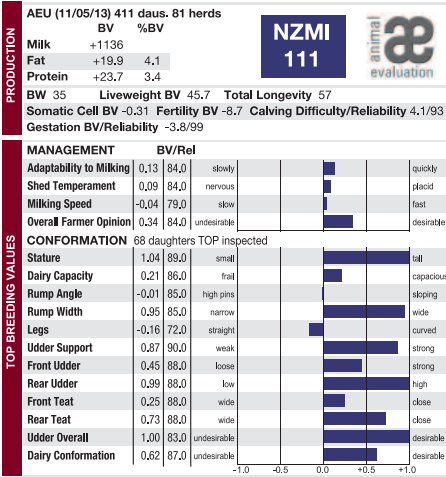


Tahora Taylormade Josie VG-86-2YR-NZ

A.B. Code 107722
TAHORA
TAYLORMADE
GOLDWYN x ROMEO

RRP \$20.00
excl. GST

- Reliable New Zealand Proven Sire
- Built to last with tremendous Udders
- Look at his Management Traits

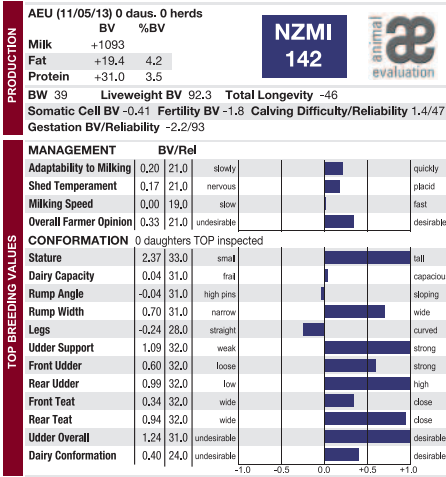


Maire Warrior Sara GP-86-4NZ

A.B. Code 105758
MURITAI TALENT
WARRIOR
TALENT x DALTON
A2/A2

RRP \$16.00
excl. GST

- Outcross pedigree to most New Zealand bloodlines
- Short Gestation BV
- Lower Live Weight cows with good Udders



Dam: Comestar Goldwyn Lava VG-87-2YR-CAN

Repromax
HealthSmart
Genomax Plus
Calving Ease
Robot Ready

A.B. Code 111724
GEN-I-BEQ
LAVAMAN
MAN-O-MAN x GOLDWYN

RRP \$25.00
excl. GST

- Genomax Plus Sire with strong Production BV's
- Calving Ease Sire
- High Udder BV's
- Repromax – High Fertility Sire