



NEW RELEASE SIRES


SEMEX[®]
Genetics for Life[®]

GEN-I-BEQ HALAK

PLANET X GOLDWYN

0200HO06198 GP-CAN DPF BLF CNF BYF CVF

aAa: 132456 DMS: 123 Kappa Casein: Beta Casein: A2B

GMACE LPI +2773

GMACE 14*APR

PRODUCTION

Herds	126		kg	%Dev
Daughters	194	Milk	+782	
Lactations		Fat	+79	+0.48
Reliability	91%	Protein	+49	+0.23

Daughter Average (ME) Milk Fat Protein

CONFORMATION

Herds: 52 Daughters: 78 Reliability : 86% GMACE 14*APR

Category	Score	Visual Scale
Conformation	7	[Bar chart showing score 7 on a scale of 3 to 15]
Mammary System	6	[Bar chart showing score 6 on a scale of 3 to 15]
Feet & Legs	6	[Bar chart showing score 6 on a scale of 3 to 15]
Dairy Strength	6	[Bar chart showing score 6 on a scale of 3 to 15]
Rump	6	[Bar chart showing score 6 on a scale of 3 to 15]

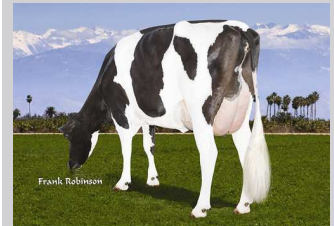
DESCRIPTIVE	GP or better %:		
Udder Depth	1D	Rear Leg Side View	4C
Udder Texture		Set of Rear Legs	
Median Suspensory	+12	Rear Leg Rear View	+6
Fore Attachment	0	Stature	+1
Fore Teat Placement	6C	Height at front end	
Rear Attachment Height	+3	Chest Width	+6
Rear Attachment Width		Body Depth	+2
Rear Teat Placement	10C	Angularity	+7
Teat Length	7S	Loin Strength	
Foot Angle	+1	Rump Angle	1L
Heel Depth		Pin Setting	
Bone Quality		Pin Width	+4

FUNCTIONAL

Herd Life	106 GM	Milking Speed	98 G
Somatic Cell Score	2.63 GM	Milking Temperament	100 G
Lactation Persistency	104 GPA	Calving ability	107 G
Daughter Fertility	100 GM	Daughter calving ability	102 G



AIR-OSA HALAK 15389



AIR-OSA HALAK 15325



CHRIS-DA HALAK 420

MISTY SPRINGS SUPERPOWER

BONAIR X SHOTTLE
0200HO03735 GP-CAN

aAa: 432516 DMS: 345 Kappa Casein: Beta Casein: A1A2

GLPI +2704

GEBV 14*APR

PRODUCTION

Herds	74		kg	%Dev
Daughters	96	Milk	+1112	
Lactations	96	Fat	+62	+0.19
Reliability	91%	Protein	+37	0.00

Daughter Average (ME) Milk 11505 Fat 443 Protein 356

CONFORMATION

Herds: 44 Daughters: 54 Reliability : 86% GEBV 14*APR

Conformation	13
Mammary System	10
Feet & Legs	9
Dairy Strength	9
Rump	9

DESCRIPTIVE	GP or better %: 67
Udder Depth	2S
Udder Texture	+8
Median Suspensory	+5
Fore Attachment	+9
Fore Teat Placement	3W
Rear Attachment Height	+6
Rear Attachment Width	+10
Rear Teat Placement	2W
Teat Length	3L
Foot Angle	+5
Heel Depth	+7
Bone Quality	+5
Rear Leg Side View	5S
Set of Rear Legs	+8
Rear Leg Rear View	+4
Stature	+1
Height at front end	+1
Chest Width	+3
Body Depth	+5
Angularity	+8
Loin Strength	+6
Rump Angle	5L
Pin Setting	+2
Pin Width	+5

FUNCTIONAL

Herd Life	108 G	Milking Speed	101 G
Somatic Cell Score	3.06 G	Milking Temperament	107 G
Lactation Persistency	97 G	Calving ability	103 G
Daughter Fertility	100 G	Daughter calving ability	99 G



TWINHILL SUPERPOWER DIAMOND



CARLMAR SUPERPOWER BETHALY



DONSHER LEVANNA SUPERPOWER

VELTHUIS SECURITY

PLANET X LOU

0200HO03712 VG-CAN BLF CVF

aAa: 345126 DMS: 234 Kappa Casein: Beta Casein:

GMACE LPI +2755

GMACE 14*APR

PRODUCTION

Herds	58	kg	%Dev
Daughters	95	Milk	+1797
Lactations		Fat	+40
Reliability	86%	Protein	+0.04
Daughter Average (ME) Milk Fat Protein			

CONFORMATION

Herds: 30 Daughters: 46 Reliability : 81% GMACE 14*APR

Conformation	11
Mammary System	8
Feet & Legs	9
Dairy Strength	8
Rump	7

-3 0 3 6 9 12 15

DESCRIPTIVE	GP or better %:
Udder Depth	0
Udder Texture	
Median Suspensory	+13
Fore Attachment	+3
Fore Teat Placement	8C
Rear Attachment Height	+5
Rear Attachment Width	
Rear Teat Placement	10C
Teat Length	6S
Foot Angle	+3
Heel Depth	
Bone Quality	
Rear Leg Side View	3S
Set of Rear Legs	
Rear Leg Rear View	+11
Stature	+3
Height at front end	
Chest Width	+5
Body Depth	+5
Angularity	+10
Loin Strength	
Rump Angle	6L
Pin Setting	
Pin Width	+5

FUNCTIONAL

Herd Life	104 GM	Milking Speed	101 GPA
Somatic Cell Score	2.96 GM	Milking Temperament	100 GPA
Lactation Persistency	99 GPA	Calving ability	105 GM
Daughter Fertility	102 GM	Daughter calving ability	104 GM

HealthSmart

Calving Ease



FLOWER-HAVEN SECURITY ADDIE



MAJESTIC VIEW SECURITY 8434



MAJESTIC VIEW SECURITY 8414

GS ALLIANCE O'KALIBER

ACME*RC X BOSS IRON

0196HO23566

aAa: DMS: Kappa Casein: Beta Casein:



GPA LPI +2255

GPA 14*APR



DECRAUSAZ IRON O'KALIBRA
Dam

PRODUCTION

Herds		kg	%Dev
Daughters	Milk	-9	
Lactations	Fat	+35	+0.35
Reliability	72%	Protein	+11 +0.11
Daughter Average (ME) Milk Fat Protein			

CONFORMATION

Herds:	Daughters:	Reliability : 68%	GPA 14*APR
Conformation	12		
Mammary System	9		
Feet & Legs	6		
Dairy Strength	10		
Rump	9		

-3 0 3 6 9 12 15

FUNCTIONAL

DESCRIPTIVE	GP or better %:		
Udder Depth	7S	Rear Leg Side View	2C
Udder Texture	+4	Set of Rear Legs	+1
Median Suspensory	+3	Rear Leg Rear View	+2
Fore Attachment	+9	Stature	+8
Fore Teat Placement	7C	Height at front end	+5
Rear Attachment Height	+8	Chest Width	+4
Rear Attachment Width	+4	Body Depth	+4
Rear Teat Placement	7C	Angularity	+8
Teat Length	5S	Loin Strength	+5
Foot Angle	+3	Rump Angle	2L
Heel Depth	+5	Pin Setting	+9
Bone Quality	+2	Pin Width	+8
Herd Life	104 GPA	Milking Speed	107 GPA
Somatic Cell Score	3.04 GPA	Milking Temperament	101 GPA
Lactation Persistency	98 GPA	Calving ability	98 GPA
Daughter Fertility	97 GPA	Daughter calving ability	99 GPA

PINE-TREE OVERTIME P-ET

NUMERO UNO X SIGNIF-P

0200HO03936 PO POC RDF BLF BYF CVF

aAa: 234165 DMS: 234,123 Kappa Casein: AB Beta Casein: A2A2

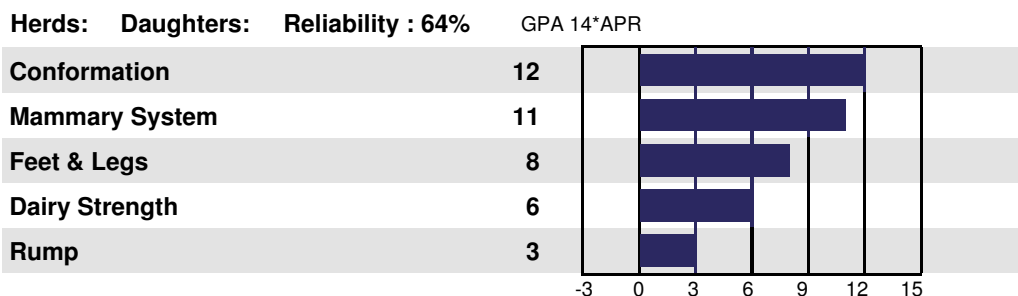
GPA LPI +2831

GPA 14*APR

PRODUCTION

Herds		kg	%Dev
Daughters	Milk	+613	
Lactations	Fat	+74	+0.50
Reliability	69%	Protein	+38 +0.16
Daughter Average (ME) Milk Fat Protein			

CONFORMATION



DESCRIPTIVE	GP or better %:		
Udder Depth	7S	Rear Leg Side View	3S
Udder Texture	+11	Set of Rear Legs	+5
Median Suspensory	+13	Rear Leg Rear View	+2
Fore Attachment	+6	Stature	+5
Fore Teat Placement	4C	Height at front end	+4
Rear Attachment Height	+13	Chest Width	-2
Rear Attachment Width	+2	Body Depth	-2
Rear Teat Placement	5C	Angularity	+10
Teat Length	1L	Loin Strength	+3
Foot Angle	+6	Rump Angle	1L
Heel Depth	+7	Pin Setting	+7
Bone Quality	+7	Pin Width	+2

FUNCTIONAL

Herd Life	110 GPA	Milking Speed	102 GPA
Somatic Cell Score	2.78 GPA	Milking Temperament	103 GPA
Lactation Persistency	104 GPA	Calving ability	99 GPA
Daughter Fertility	100 GPA	Daughter calving ability	101 GPA



HICKORYMEA SIGNIF
OHIO-P-ET
Dam

ROCKYMOUNTAIN LOTTOMAX

NUMERO UNO X SUPER

0200HO10049 DPF RDF BLF BYF CVF

aAa: 342516 DMS: 126 Kappa Casein: AA Beta Casein:

GPA LPI +3112

GPA 14*APR

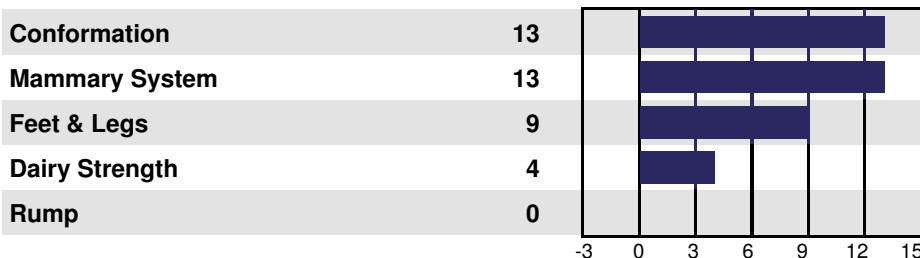
PRODUCTION

Herds		kg	%Dev
Daughters	Milk	+1319	
Lactations	Fat	+79	+0.31
Reliability	69%	Protein	+48 +0.04
Daughter Average (ME) Milk Fat Protein			



CONFORMATION

Herds: Daughters: Reliability : 65% GPA 14*APR



ROCKYMOUNTAIN SUPER LEITA
Dam

FUNCTIONAL

DESCRIPTIVE	GP or better %:		
Udder Depth	7S	Rear Leg Side View	1C
Udder Texture	+12	Set of Rear Legs	+7
Median Suspensory	+14	Rear Leg Rear View	+6
Fore Attachment	+8	Stature	+4
Fore Teat Placement	6C	Height at front end	+2
Rear Attachment Height	+10	Chest Width	0
Rear Attachment Width	+3	Body Depth	-2
Rear Teat Placement	8C	Angularity	+6
Teat Length	2L	Loin Strength	0
Foot Angle	+4	Rump Angle	2H
Heel Depth	+9	Pin Setting	+3
Bone Quality	+5	Pin Width	-1
Herd Life	116 GPA	Milking Speed	105 GPA
Somatic Cell Score	2.70 GPA	Milking Temperament	110 GPA
Lactation Persistency	100 GPA	Calving ability	100 GPA
Daughter Fertility	105 GPA	Daughter calving ability	106 GPA

BW ARES

CELEBRITY X BLACKSTONE

0200JE09836

aAa: 312465 DMS: Kappa Casein: Beta Casein: A1A2



GPA LPI +1604

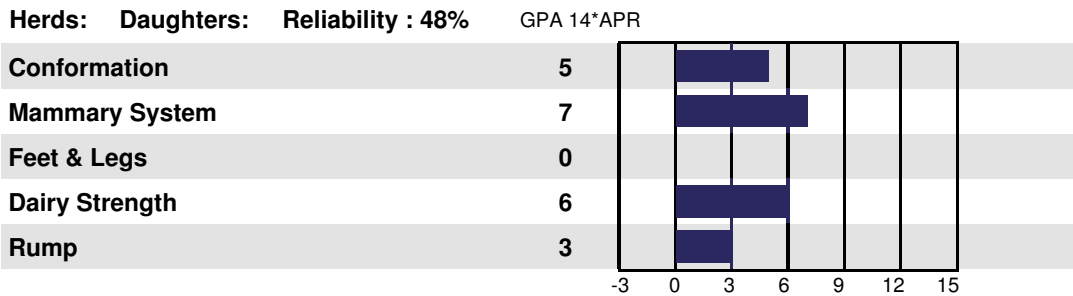
GPA 14*APR

PRODUCTION

Herds		kg	%Dev
Daughters	Milk	+1354	
Lactations	Fat	+57	-0.14
Reliability	59%	Protein	+45
			-0.10

Daughter Average (ME) Milk Fat Protein

CONFORMATION



FUNCTIONAL

DESCRIPTIVE	GP or better %:		
Udder Depth	2D	Rear Leg Side View	2S
Udder Texture	+5	Set of Rear Legs	-2
Median Suspensory	+7	Rear Leg Rear View	+1
Fore Attachment	+3	Stature	+5
Fore Teat Placement	4C	Height at front end	0
Rear Attachment Height	+8	Chest Width	0
Rear Attachment Width	+6	Body Depth	0
Rear Teat Placement	3C	Angularity	+9
Teat Length	1S	Loin Strength	-3
Foot Angle	-1	Rump Angle	0
Heel Depth	-3	Pin Setting	-6
Bone Quality	+6	Pin Width	+4

Herd Life	99 GPA	Milking Speed	101 GPA
Somatic Cell Score	2.84 GPA	Milking Temperament	98 GPA
Lactation Persistency	104 GPA	Calving ability	98 GPA
Daughter Fertility	101 GPA	Daughter calving ability	101 GPA