

2018

# Goat Semen CATALOGUE

## SAANEN

Adam	Dictator
Andrew	Franchise
Climax	Grasshopper
Comet	Idris
Cornerstone	Jupiter
Destiny	Radar
	Windbreak

## ALPINE

Added Attraction	Ercules
Ambassador	Skype
Da Vinci	Solar Storm
Eomer	Super Nova

## LA MANCHA

Atreyu  
Mr Darcy

## NUBIAN

King Candy

## TOGGENBURG

Cedarwood  
Dogwood

## Boer

Shoot Shovel N' SHHH

For over 60 years, EastGen has been working with farmers to increase the productivity of their operations with A.I. and the use of elite genetics. Make the most of your herd's genetic progress with EastGen's growing line-up of bucks. ***EastGen Leads. EastGen Solves.***

To make an order, contact Paul Stewart at  
[goats@eastgen.ca](mailto:goats@eastgen.ca) or call 1-613-222-4385

  
[www.eastgen.ca/goats](http://www.eastgen.ca/goats)



# Interpretation

## Dairy Goat Genetic Evaluations



Estimated Breeding Values (or EBV's) are an estimation of the genetic value of an animal. They indicate an animal's value as a parent. Individual animals with the best EBVs for a given trait have the highest probability of producing superior progeny for that trait.

**Production Traits:** Goat proofs are expressed as EBV's for Milk, Fat and Protein in units of kilograms/lactation. A rating of zero is considered to reflect breed average. Bucks (and does) transmit half of the genes to their progeny and therefore 50% of their genetic value. For example, a Buck with +100 for Milk can be expected to sire daughters that produce 50 kg more milk per lactation than daughters of a Buck with 0 for Milk (if kept under the same management and environmental conditions).

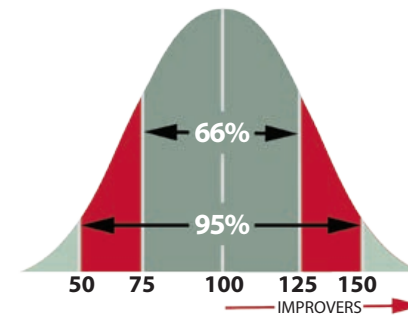
**Conformation Traits:** Breed average for the Conformation Traits is 5. Bucks which are rated as higher than 5 for a trait are considered to be breed improvers for that trait while those less than 5 are not.

**Index Traits:** Index Traits combine all important traits into one overall value. This provides a convenient way to select for several traits at once versus individually selecting traits.

**Combined Index (CINDX) = 60% PINDX + 40% TINDX**

**Production Index (PINDX) = 50 % Milk (kg) + 50% Fat (kg)**

**Type Index (TINDX) = 25% GA + 15% SL + 12% RU + 12% FU + 10% DC + 4% TE + 10% BC + 12% FL**



**Breed Average = 100**

**Ranking - Buck EBV**

Top 5%	~ >140
Top 10%	~ >130
Top 20%	~ >120
Top 30%	~ >110

**Advantages of Artificial Insemination:** For decades, it has been known that goat breeders have significant opportunities to make rapid and substantial genetic gains with the use of goat Artificial Insemination (A.I.). This potential comes from the fact that goats naturally have a very large amount of genetic variability; traits of economic importance are very heritable (genetics can have a big impact); and goats have a relatively short generation interval. This means that goat breeders can rapidly produce more off-spring from their best females in bigger numbers.

### Benefits of A.I.:

- ▶ **Increased rate of genetic improvement** due to the superior genetics of the bucks (50% is passed along to the next generation).
- ▶ **Introduces unique genetics** into your herd which can be used on targeted females or bloodlines for greater potential to achieve your goals for your herd.
- ▶ **Limits the negative impact of a natural-service buck** which fails to transmit traits of importance as expected.
- ▶ **Reduces the risk of transmission of diseases** and parasites through direct contact from a buck.
- ▶ **Reduces your cost** of feeding, housing, fencing and labour related to maintaining a buck.
- ▶ **Accurate record keeping** for heats, breeding dates, and pedigrees will lead to more accurate kidding dates, culling decisions and reduced inbreeding levels.

For more details on how you can increase the genetic potential of your herd with A.I., email: [goats@eastgen.ca](mailto:goats@eastgen.ca).



(CAN) A129489

## Trilyte ADDED ATTRACTION



Breeder: Susan D Frazer, Beulah, MB

- Added Attraction's dam, Xarrrie Blue is now EX-92 \*M just received her Select Doe status. "Blue" is from 3 generations of EX dams. "Blue" has 1 Championship leg and has a daily test with 5.7 kg of 3.55% F (21.89 points)
- Blue's dam, GCH Trilyte Periwinkle \*M EX Select Doe, is a 2X West National Champion. She had 5 \*M lacations with the highest daily yield of 7.3 kg!
- Expect Added Attraction to combine his family's high milk production, good component status, exceptional dairy type and longevity.

### CAN-EBV's and Indexes

December 2017 (GoatGenetics.ca)

#### EBV's

Milk kg	-25	General Appearance	5.1
Fat kg	-0.4	Body Capacity	5.0
Protein kg	-0.7	Feet & Legs	5.1
Teats	4.7	Indexes	
Fore Udder	4.9	Combined	95
Rear Udder	5.2	Production	95
Med. Susp. Ligament	4.9	Type	99
Dairy Character	4.8		

For further information, contact:

7660 Mill Road, Guelph, ON N1H 6J2  
 Tel: 1-888-821-2150 • Fax: (519) 763-6582  
 Email: goats@eastgen.ca • www.eastgen.ca/goats

EastGen





**Dam**

Trilyte Xarrie Blue \*M EX92 Select Doe

- Backed by 3 generations of EX dams



**Maternal Granddam (Added Attractions 2nd dam)**

GCH Trilyte Periwinkle \*M EX Select Doe

- 2X West National Champion



**Paternal Granddam**

GCH Amy's Pride ADV Signy 3\*M

- 2X Best Doe is Show  
(Monroe Georgia National Fair)





(CAN) A129490

## Trilyte **AMBASSADOR**

Breeder: Susan D Frazer, Beulah, MB

- Ambassador stems from one of the most balanced families in Canada for both type and production
- Ambassador's dam went VG85 as a two year old completing 4 generations of VG or EX dams. "Ysabella" had a daily test of 6.0 kg of 3.58% F (21.03 points)
- "Ysabella's" dam, Trilyte Will-O-The-Wisp \*M VG88, was West National Show Reserve Grand Champion and she's backed by 2 more generations of \*M EX dams!
- Expect Ambassador to combine the productivity and show winning type prevalent in both sides of his pedigree!

### CAN-EBV's and Indexes

December 2017 (GoatGenetics.ca)

#### EBV's

Milk kg	-19	General Appearance	5.2
Fat kg	-0.5	Body Capacity	5.2
Protein kg	-1.3	Feet & Legs	5.0
Teats	4.7		
Fore Udder	5.0	Indexes	
Rear Udder	5.6	Combined	104
Med. Susp. Ligament	5.0	Production	95
Dairy Character	4.9	Type	115

For further information, contact:

7660 Mill Road, Guelph, ON N1H 6J2  
 Tel: 1-888-821-2150 • Fax: (519) 763-6582  
 Email: [goats@eastgen.ca](mailto:goats@eastgen.ca) • [www.eastgen.ca/goats](http://www.eastgen.ca/goats)



## Dam (pictured above)

Trilyte Ysabella \*M VG85-2YR

- Backed by 3 generations of VG or EX dams
- 3-2 101 6.0 kg 0.155 3.8% \*M 21.03 points



## Paternal Granddam

GCH Amy's Pride ADV Signy 3 \*M

- 2X Best Doe in Show (Mondroe Georgia National Fair)



## 2nd Dam

Trilyte Will-O-The-Wisp \*M VG88-2YR

- West National Show Reserve Grand Champion
- 3-3 79 5.2 kg 0.17 3.31% \*M 19.81 points





2nd Dam

**2nd Dam:** GCH Nigaéra Blue Moon Wakinou \*P EX91

- 4 - 8 279 1,144 kg 31 2.71% \*P
- 5 - 8 298 1,417 kg 36 2.54% \*P
- 2016 Saint Hyacinthe Grand Champion, BUIS
- 2016 Royal Winter Fair 4th Milkers, 5-Yr-Old & Older

(CAN)CA145825

## Petite-Anse Colt DA VINCI

Breeder: Ferme Petite-Anse, Catherine Lord, Rivière Ouelle QC

- Da Vinci's sire, Weavers Colt, is one of the top type sires in Canada and is sired by a former #1 Type sire.
- Da Vinci's dam, Petite-Anse Sirius Akinou \*P VG85, has just started her 4th lactation and has a second test of 6.8 kg. She is the heaviest milking doe at Ferme Petite-Anse. Her dam, GCH Nigaéra Blue Moon Wakinou \*P EX91, was Grand Champion & Best Udder in Show at the Saint Hyacinthe Fair in 2016 and 4th at the 2016 Royal Winter Fair.
- Expect a beautiful balance of production & type with Da Vinci.

### CAN-EBV's and Indexes December 2017 (GoatGenetics.ca)

EBV's		Indexes	
Milk kg	160	Combined	135
Fat kg	3.19	Production	137
Protein kg	4.00	Type	111
Teats	4.8		
Fore Udder	5.1		
Rear Udder	5.0		
Med. Susp. Ligament	5.3		
Dairy Character	5.0		
General Appearance	5.2		
Body Capacity	4.9		
Feet & Legs	5.1		

For further information, contact: **EastGen**

7660 Mill Road, Guelph, ON N1H 6J1

Tel: 1-888-821-2150 • Fax: (519) 763-6582

Email: [goats@eastgen.ca](mailto:goats@eastgen.ca) • [www.eastgen.ca/goats](http://www.eastgen.ca/goats)





**Dam:** Petite-Anse Wallace Zaturn \*P VG86

- 2 - 11 292d 1,318 kg 41 Fat 3.11% Fat \*P
- 2016 Quebec Provincial Show 3rd Place

## (CAN)CA145827 Petite-Anse Captain **EOMER**

Breeder: Ferme Petite-Anse, Catherine Lord, Rivière Ouelle QC

- Eomer's sire, PJ-Baileys' Denali CPT America, is making quite a splash with his early 1st-crop daughters who already have earned Jr CH & Res Jr CH honours. CPT America's dam GCH PJ-Baileys' FF Apple Toffee 2\*M EX91 is a quite simply impressive.
- Petite-Anse Wallace Zaturn \*P VG86. Eomer's dam, is one of the top Overall Indexed does in Canada. She was 3rd Place 2-YR-Old at the Quebec Provincial show and her daughter "Dreamer Dairyqueen" was 2nd Doe Kid at the 2016 Royal Winter Fair.

### CAN-EBV's and Indexes December 2017 (GoatGenetics.ca)

EBV's		Indexes	
Milk kg	56	Combined	128
Fat kg	1.26	Production	114
Protein kg	2.21	Type	134
Teats	5.1		
Fore Udder	5.3		
Rear Udder	5.2		
Med. Susp. Ligament	5.0		
Dairy Character	5.2		
General Appearance	5.3		
Body Capacity	5.0		
Feet & Legs	5.0		

For further information, contact: **EastGen**

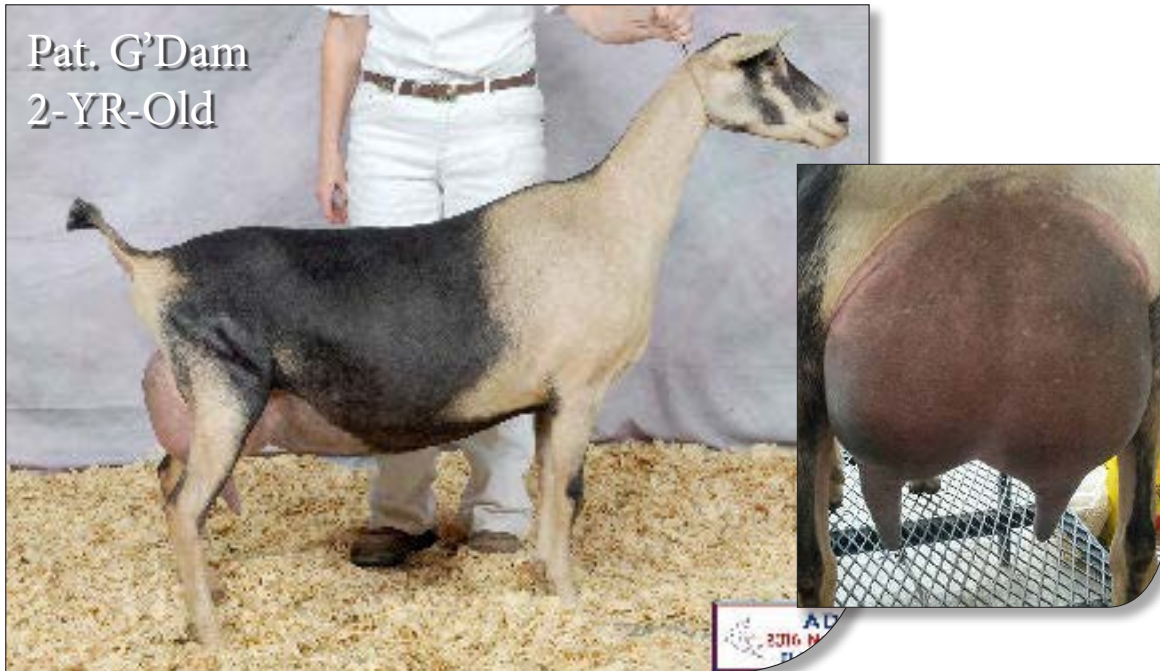
7660 Mill Road, Guelph, ON N1H 6J1

Tel: 1-888-821-2150 • Fax: (519) 763-6582

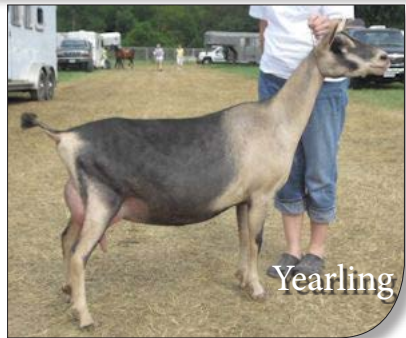
Email: [goats@eastgen.ca](mailto:goats@eastgen.ca) • [www.eastgen.ca/goats](http://www.eastgen.ca/goats)







Pat. G'Dam  
2-YR-Old



Yearling

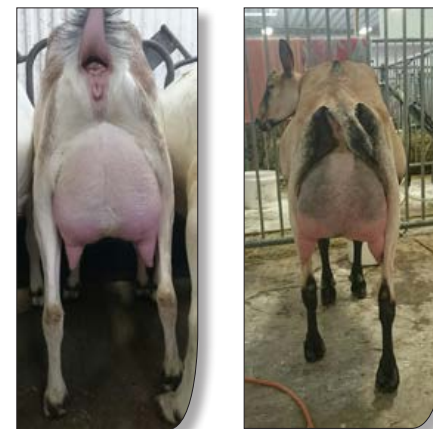
GCH PJ-Baileys' FF Apple Toffee 2\*M EX91:  
(Paternal G'Dam of "Eomer")

- 3-01 255 3,090 lbs 3.8% 92 3.2% 87
- 2015 Show Wins- 1 x 1st Place, 1 x GCH
- 2016 Show Wins- 2 x 1st Place, 2 x GCH



Maternal Brother  
to Eomer

Petite-Anse Dreamer Dairyqueen  
2016 Royal Winter Fair 2nd Doe Kid 6-12 Months



Daughters of Wallace Zatur (Eomer's dam)  
Petite-Anse Colt Constellation VG85  
Petite-Anse Colt Cassiope VG85  
(both yearlings by Weavers Colt)

For further information, contact:

7660 Mill Road, Guelph, ON N1H 6J1

Tel: 1-888-821-2150 • Fax: (519) 763-6582 Email: [goats@eastgen.ca](mailto:goats@eastgen.ca) • [www.eastgen.ca/goats](http://www.eastgen.ca/goats)



Dam

**Dam:** Petite-Anse Wallace Zircon \*P VG88

- 2 - 11 305d 1,113 kg 40 Fat 3.59% Fat \*P

## (CAN)CA145831 Petite-Anse Colt **ERCULES**

Breeder: Ferme Petite-Anse, Catherine Lord, Rivière Ouelle QC

- Ercules combines the sire with the most progeny in the Top 10 List, Weavers Colt, with one of Canada's highest ranked does Petite-Anse Wallace Zircon \*P VG88.
- Petite-Anse Wallace Zircon \*P VG88 has been at or near the Top of Canada's list for some time and is currently the #4 Overall Combined Index and #2 Overall Type Index Doe in Canada.
- Ercules offers unlimited potential for long, open, capacious frames, well-attached udders and outstanding production improvement.

### CAN-EBV's and Indexes December 2017 (GoatGenetics.ca)

EBV's		Indexes	
Milk kg	121	Combined	148
Fat kg	3.21	Production	132
Protein kg	3.25	Type	142
Teats	5.3		
Fore Udder	5.3		
Rear Udder	5.2		
Med. Susp. Ligament	5.3		
Dairy Character	5.0		
General Appearance	5.7		
Body Capacity	5.2		
Feet & Legs	5.2		

For further information, contact: **EastGen**

7660 Mill Road, Guelph, ON N1H 6J1

Tel: 1-888-821-2150 • Fax: (519) 763-6582

Email: [goats@eastgen.ca](mailto:goats@eastgen.ca) • [www.eastgen.ca/goats](http://www.eastgen.ca/goats)







(CAN)CA143684

## Yamaska Vaza SKYPE

Breeder: Raynald Dubé & Sylvie Girard, L'Ange-Gardien, QC

- Skype represents a truly exciting opportunity for Alpine breeders. His sire is the high-production foreign buck Vaza which will be a total outcross for Canadian breeders
- Skype's Dam, Yamaska Nirvana Freckles \*P EX93 is Canada's #1 Type Index doe and is a 5th generation VG or EX direct dam.
- With Skype, you will be getting the production and protein of Vaza combined with the deep-pedigree, components and type of Canada's Top Type Alpine - "Freckles"!

**Dam:** Yamaska Nirvana Freckles \*P EX93

- 3 - 0 274d 1,217 kg 43 Fat 3.53% Fat \*P

**2nd Dam:** Cabrie Terminator Dimanche \*P VG86

- 2 - 2 305d 1,159 kg 45 Fat 3.88% Fat \*P
- 3 - 3 305d 1,242 kg 51 Fat 4.11% Fat \*P
- 5 - 3 305d 1,197 kg 47 Fat 3.93% Fat \*P
- 6 - 3 proj. 1,300 kg 3.6% F 3.1%P

**3rd Dam:** VG85

**4th Dam:** VG87

**5th Dam:** VG87

For further information, contact: **EastGen**

7660 Mill Road, Guelph, ON N1H 6J1

Tel: 1-888-821-2150 • Fax: (519) 763-6582

Email: goats@eastgen.ca • www.eastgen.ca/goats



### CAN-EBV's and Indexes

December 2017 (GoatGenetics.ca)

EBV's		Indexes	
Milk kg	114	Combined	133
Fat kg	4.13	Production	135
Protein kg	2.75	Type	131
Teats	5.2		
Fore Udder	5.3		
Rear Udder	5.6		
Med. Susp. Ligament	5.3		
Dairy Character	5.1		
General Appearance	5.2		
Body Capacity	5.2		
Feet & Legs	5.1		



Dam: Weavers L'Avenir Sunshine 3\*P EX91  
 2-04 305 1,171 kg 41 3.5 \*P  
 3-06 305 1,121 kg 38 3.4 \*P  
 4-07 305 1,023 kg 33 3.2 \*P

## (CAN) A124013

### Weavers **SOLAR STORM**

Breeder: Kevin B Weaver, Belmont, ON

- Solar Storm's dam "Sunshine 3\*P EX91" is a dairy, long-bodied doe with an exceptionally high, wide rear udder, strong suspensory ligament and ideal leg structure.
- The 2nd dam, Stella CBK, was a VG-2-YR-Old with outstanding production potential. All 3 lactations were \*P with her best as a 5-YR-Old with 1,505 kg of 3.46%F
- Expect Solar Storm to be a source for solid production improvement and outstanding, functionally sound offspring that will be made to last.

#### CAN-EBV's and Indexes

December 2017 (GoatGenetics.ca)

##### EBV's

Milk kg	-45	General Appearance	5.3
Fat kg	-0.1	Body Capacity	5.2
Protein kg	-1.0	Feet & Legs	5.2
Teats	4.9		
Fore Udder	5.2	Indexes	
Rear Udder	5.7	Combined	112
Med. Susp. Ligament	5.3	Production	93
Dairy Character	5.0	Type	133

For more information, contact:

7660 Mill Road, Guelph, ON N1H 6J2  
 Tel: 1-888-821-2150 • Fax: (519) 763-6582  
 Email: goats@eastgen.ca • www.eastgen.ca/goats

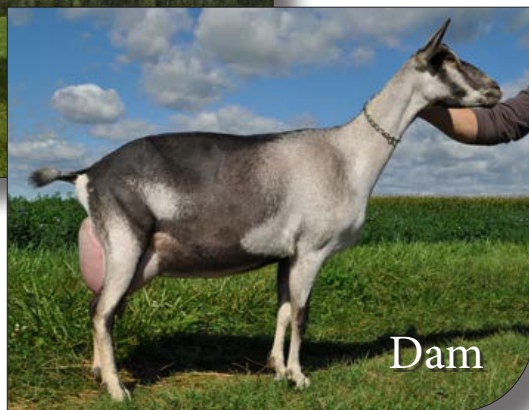
EastGen





# BUCKS

## Alpine



Dam: Weavers L'Avenir Sunshine EX-91  
 2-04 305 1,171 kg 41 3.5 \*P  
 3-06 305 1,121 kg 38 3.4 \*P  
 4-07 305 1,023 kg 33 3.2 \*P

## (CAN) A124012

### Weavers **SUPER NOVA**

Breeder: Kevin B Weaver, Belmont, ON

- Solar Storm's sire is a former #1 Alpine Buck in the breed for Type index. His dam "Sunshine EX-91" is an impressive doe with an ideal udder and feet & legs.
- "Sunshine EX-91" is a milking machine. Her 3 lactations were all over 1,000 kg and she did it them all with a snug, beautifully attached udder
- Expect Solar Storm to be a source for solid production improvement and to sire long-lasting offspring with outstanding, functional conformation.

### CAN-EBV's and Indexes December 2017 (GoatGenetics.ca)

#### EBV's

Milk kg	5	General Appearance	5.3
Fat kg	0.3	Body Capacity	5.2
Protein kg	0.3	Feet & Legs	5.2
Teats	4.9		
Fore Udder	5.2	Indexes	
Rear Udder	5.7	Combined	120
Med. Susp. Ligament	5.3	Production	102
Dairy Character	5.0	Type	133

For more information, contact:

7660 Mill Road, Guelph, ON N1H 6J2  
 Tel: 1-888-821-2150 • Fax: (519) 763-6582  
 Email: [goats@eastgen.ca](mailto:goats@eastgen.ca) • [www.eastgen.ca/goats](http://www.eastgen.ca/goats)

EastGen



(CAN)S129137

## Kampfire Ali Emmott's ADAM

Breeder: Keith Van Camp, Blackstock, ON

- From a family renowned for Show-winning type. Adam's sire is from a Canadian National Champion Royal Winter Fair winner.
- Adam's EX92 3E dam (Ashley \*P Select Doe) was Best in Show at the Royal Winter Fair and has a best record of 1,256 kg with 3.42% Fat.
- 2nd dam's sister has a best record of 2,066 kg and is 10th on CAN's All-Time Butterfat List and 5th All-Time for Milk!
- Expect Adam to be an outstanding source for lifetime production, length of body, capacity & tremendous udders.



Dam

GCH Brighter Futures Ashley \*P EX92 3E  
(Select Doe)  
Best in Show - 2007 Royal Winter Fair Show

### CAN-EBV's and Indexes December 2017 (GoatGenetics.ca)

#### EBV's

Milk kg	-23	General Appearance	5.0
Fat kg	-0.2	Body Capacity	5.1
Protein kg	-0.9	Feet & Legs	5.0
Teats	5.5		
Fore Udder	5.4	Indexes	
Rear Udder	5.2	Combined	107
Med. Susp. Ligament	5.4	Production	96
Dairy Character	5.1	Type	119

For more information, contact:

7660 Mill Road, Guelph, ON N1H 6J2  
Tel: 1-888-821-2150 • Fax: (519) 763-6582  
Email: [goats@eastgen.ca](mailto:goats@eastgen.ca) • [www.eastgen.ca/goats](http://www.eastgen.ca/goats)



# Kampfire Emmott's

# ADAM

(S129137)

## Phenotypic Highlights

**Paternal Grandsire:** Milkin' Time Shawnee's Otis (S110127)

**Sire:** Kampfire E Otis's Emmott (S125975)

**Paternal Grand Dam:** Grasshill Eudora \*P EX-91 (S98635)

1-11 305d 1,698 3.82%F 85 2.89%P 49 kg (3,743M 143F 108P lbs.) 10th Canadian Butterfat 2009 Honour Roll  
Show Results: 1st 2-YR-Old and Res. Grand Champion Saanen 2007 RAWF Goat Show

**Kampfire Emmott's *ADAM*** (S129137)  
(Born: March 29, 2012)

**Dam:** GCH Brighter Futures Ashley \*P EX-92 3E (Select Doe) (S92075)

5-2 249d: 1,256 3.42%F 43 2.87%P 36 kg (2769M 95F 79P lbs.)

Progeny: 3 VG and 1 EX daughters; 4 \*P daughters

Show Results: Best Doe in Show 2006 Peterborough Fair Goat Show  
Best Doe in Show 2007 RAWF Goat Show

**Maternal Grand Dam:** Brighter Futures Arlene (S89579)

Arlene's Maternal Sister: Sweating Acres Anna EX \*P

6-7 305d: 1,535 3.45%F 53 2.93%P 45 kg (3,384M 1117F 99P lbs.) 10th Canadian Butterfat 2008-9 Honour Roll

7-6 305d: 2,066 3.00%F 62 2.71%P 56 kg (4,555M 137F 123P lbs.) 5th Canadian Milk 2009 Honour Roll

### **NOTE:**

**\*P:** Awarded to does that have met the standards of milk and/or butterfat production for its age category, on Official DHAS/DHI or Group Supervised Test.

**GCH:** Designation awarded to a doe that has achieved her CH status as above, and also earned a \*P or \*M, or a \*S buck that has achieved his CH status.

**Select Doe:** Awarded to a dairy doe that has met or exceeded criteria based on a system where points must be earned in all of three categories: show, milk production and type classification.



Dam's Twin Sister: Kampfire Shawnee's Angel EX96



"ANGEL"  
3/4 View

(CAN)S129135

## Kampfire Ali Emmott's **ANDREW**

Breeder: Keith Van Camp, Blackstock, ON

- From one of the most well-rounded families in Canada excelling for long, lifetime production, the depth of family; and the ability to breed big-time show winners!
- Andrew's dam, Kampfire Shawnee's Allison, just classified EX94 (3rd highest in Canada). She was the former #1 Ranked Type Doe in Canada! Dam's twin sister Angel was classified EX96 (tied as Canada's #1 highest doe)!
- 2nd Dam is EX92 3E, was a CAN National Champion RWF winner.
- Andrew is the **Total Package**. Expect him to have the ability to breed productive does with breed-leading conformation and tremendous herd life.

### CAN-EBV's and Indexes December 2017 (GoatGenetics.ca)

#### EBV's

Milk kg	-44	General Appearance	4.8
Fat kg	-1.5	Body Capacity	5.1
Protein kg	-1.3	Feet & Legs	5.1
Teats	5.5		
Fore Udder	5.5	Indexes	
Rear Udder	5.4	Combined	102
Med. Susp. Ligament	5.4	Production	87
Dairy Character	5.1	Type	122

For more information, contact:

7660 Mill Road, Guelph, ON N1H 6J2  
Tel: 1-888-821-2150 • Fax: (519) 763-6582  
Email: goats@eastgen.ca • www.eastgen.ca/goats



Kampfire Emmott's

# ANDREW

(S129135)

## Phenotypic Highlights

**Great Paternal Grand Sire:** Grasshill Toro's Shawnee \*S VG-89

Show Results: Best Buck in Show – 2007 Canadian Buck Classic Ring 1

Best Buck in Show – 2007 Quebec Buck Show Ring 1

Grand Champion Saanen Buck – 2007 Canadian Buck Classic Ring 2

Progeny: Kampfire Shawnee's Marcus \*S +S VG-88

Kampfire Shawnee's Madelline VG-87

Kampfire Shawnee's Angel VG-87 \*P (1-1 384d: 1,135 4.16F 47 3.08%P 35 kg)

**Paternal Grandsire:** Milkin' Time Shawnee's Otis (S110127)

**Sire:** Kampfire E Otis's Emmott (S125975)

**Paternal Grand Dam:** Grasshill Eudora \*P EX-91 (S98635)

1-11 305d 1,698 3.82%F 85 2.89%P 49 kg (3,743M 143F 108P lbs.) 10th Canadian Butterfat 2009 Honour Roll

Show Results: 1st 2-YR-Old and Res. Grand Champion Saanen 2007 RAWF Goat Show

## Kampfire Emmott's **ANDREW** (S129135)

(Born: March 8, 2013)

**Dam:** Kampfire A Shawnee's Allison \*P EX-94 (S103524) - Former #1 Type Doe in Canada, #3 Highest Classified Doe in Canada

1-1 384d: 1,068 3.65%F 39 3.19%P 34 kg (2,354M 86F 75P lbs.)

Allison's Twin Sister: Kampfire Shawnee's Angel EX-96 (Tied as the #1 scored doe in Canada)

**Maternal Grand Dam:** GCH Brighter Futures Ashley \*P EX-92 3E (Select Doe) (S92075)

5-2 249d: 1,256 3.42%F 43 2.87%P 36 kg (2769M 95F 79P lbs.)

Progeny: 3 VG and 1 EX daughters; 4 \*P daughters

Show Results: Best Doe in Show 2006 Peterborough Fair Goat Show, Best Doe in Show 2007 RAWF Goat Show

**Great MGD:** Brighter Futures Arlene (S89579)

Arlene's Maternal Sister: Sweating Acres Anna EX \*P

6-7 305d: 1,535 3.45%F 53 2.93%P 45 kg (3,384M 1117F 99P lbs.) 10th Canadian Butterfat '08 Honour Roll

7-6 305d: 2,066 3.00%F 62 2.71%P 56 kg (4,555M 137F 123P lbs.) 5th Canadian Milk '09 Honour Roll



Mat. Grand Dam

(CAN)S127293

## Grasshill Trooper **CLIMAX**

Breeder: Grasshill Farms Ltd., Bobcaygeon, ON

- Former #2 Overall Saanen buck in Canada with a Combined Index of 123!
- Climax's \*P dam "Nightrider Cymbal" has a record of: 2-1 305 1,890 kg 62F 3.3%F
- 2nd dam "Cersten" is EX and has 5 \*P records, two records over 2,000 kg with the best at: 305 2,438 69F 2.83%F. 3rd dam is VG \*P with 1,804 kg 4.8%F 3.2%P
- Climax's dam is a maternal brother to the former #1 buck in Canada "*Cornerstone*"! Expect tremendous will to milk from snugly attached udders.

### CAN-EBV's and Indexes

December 2017 (GoatGenetics.ca)

EBV's			
Milk kg	28	General Appearance	4.9
Fat kg	1.6	Body Capacity	5.0
Protein kg	1.3	Feet & Legs	5.0
Teats	5.6		
Fore Udder	5.3	Indexes	
Rear Udder	5.7	Combined	123
Med. Susp. Ligament	5.5	Production	112
Dairy Character	5.3	Type	126



For more information, contact:

7660 Mill Road, Guelph, ON N1H 6J2  
 Tel: 1-888-821-2150 • Fax: (519) 763-6582  
 Email: [goats@eastgen.ca](mailto:goats@eastgen.ca) • [www.eastgen.ca/goats](http://www.eastgen.ca/goats)

EastGen





## GRASSHILL XMAS COMET -[CAN]S140862- SEW 349C



Grasshill KP Cloverleaf - SEW 33z  
... Comet's Sire ...

### GRASSHILL XMAS COMET .....

[CAN]S140862- SEW 349C

Nearest 3 Dam Prod Avg (305d): **2271 kg 3.5f 3.1p**

**Indexes (CI,P,T): 153-158-113**

**Homozygous Scrapies Resistant**

**N.B. All Production Amounts are listed in Kilograms (kg)-**

**To convert to LB : multiply by 2.205 (1000 kg = 2205 lb)**



Grasshill Xmas Comet - SEW 349C  
Dam: #1 Combined Index Saanen, Canada



#1 Saanen Index Canada:  
Conformation

Grasshill Tribute Cornerstone  
(Maternal Brother to 'Knight Prince')

### GRASSHILL KP CLOVERLEAF -[CAN]S126305

His Granddam is Champ's Full Sister... high prod potential



Grasshill Honour's Champ EX  
Sire of 'Diana', 3688 kg (305days)

**Persistent, High Production Throughout ...**

**Carrier of the Nadia's 'Persistency' Gene?**

Comet's Dam 'Xmas' :#2 Saanen Production Index Canada

**#1 Saanen Combined Index - Production & Type**



Inheriting Nadia's Persistency!

... 'Xmas' ...  
Sire: 'Narrator'  
Granddam: 'Nadia'  
Kidding at 1yr3m, Xmas is now  
milking in her 2nd lactation  
No Dry Period! 1014 DIM  
Total to date: 5960 kg  
3 Sons, 1 Daughter at Grasshill

### GRASSHILL NARRATOR XMAS -[CAN]S133936-

1yr3m: 1910 kg 3.4f 2.8p; no dry period (1 day)

2yr5m: 2020 kg (305d) 4.0f 3.1p

Still milking in 2nd lact, 1010 DIM, 5960 kg to date

1 milking daughter, 3 sons. Semen available...



#1 Saanen Doe Canada:  
Combined Prod/Type Index

Grasshill Narrator Xmas

### GRASSHILL KNIGHT PRINCE -[CAN]S110825-VG-88

<--Maternal Brother: 'Cornerstone'

**#1 Saanen Buck Canada: Conformation Index**

Mat Sisters : Caitlyn VG; 2215 kg (305d) 3.7f 3.3p

Cersten EX; 2295 kg (305d) 4.0 3.0; Life: 14380 kg



Grasshill Dynamo Katrina 10,390 kg total

### GRASSHILL DYNAMO CINNAMON

-[CAN]S110815- 2570 kg (305d) 3.1f 2.9p



Grasshill H Patricia EX, 2862 kg- 305d

### GRASSHILL PARAMOUR NARRATOR-[CAN]S120682

Outstanding Dam & Daughter: 'Nadia' & 'Xmas'



Grasshill Nadia - VG 88 - 19,830 kg  
World's Highest Total Milk Production?

### GRASSHILL CHAMP'S YVONNE-[CAN]S101810- VG

2222 kg 3.5f 3.2p, Life: 9180 kg

- 5 daughters: 2 now in Trinidad

'Vodka': 2530 kg (305d) 3.2f 2.9p; Life: 8710 kg

<-- 'Xmas': 2020 kg (305d) 4.0f 3.1p

5960 kg Total to date

### GRASSHILL CHAMP'S KNIGHT -[CAN]S101798

Paternal Sister : Diana VG- 88, Life: 18,030 kg

3688 kg- one of World's Highest 305 day records!

Maternal Sisters: Nadine EX, Life: 9010 kg

Nadia VG-88, Life: 19,830 kg (World's Highest?)

### SWEATING ACRES F. CINDERELLA -[CAN]S81709-



'S. A. Cinderella' VG  
1804 kg (305d) 4.8 3.2  
4 daughters: 1 EX, 3VG  
Princess: 11,160 kg total  
Cersten: 14,380 kg total

### GRASSHILL LAD'S DYNAMO -[CAN]S104193-

-24 high production daughters

<-- Daughters: 'Katrina', 1960 kg (305d)

<--'Cinnamon', 2570 kg (305d) (Cloverleaf's dam)

Toffee' : 14,240 kg (lifetime) etc

### GRASSHILL HONOUR'S CHELSEA-[CAN]S98617

EX, Total Prod: 10,657 kg

Four Consecutive Lact Average (305d) : 2506 kg

- 4 sisters over 2100 kg (305d); 1 EX, 3 VG

Mat Brother: 'Champ' EX, sire of 'Diana', 3688 kg

### GRASSHILL DIEGO PARAMOUR -[CAN]S111945-

<-- His Dam: 'Patricia' EX, Life: 14,420 kg

Five Consecutive Lact Average (305d) : 2244 kg

### <--GRASSHILL NADIA -[CAN]S97758- VG-88

- a World Leader in Total Milk Production

& Persistency - 19,830 kg, 43,718 lb

Now 11 yrs old, and Still Milking!

Nadia has kidded 8X, milked 3533 days, and

been dry only 187 days since 1st kidding 2006!

- 4 sons, 7 daughters also Persistent Producers

### GRASSHILL HONOUR'S CHAMP -[CAN]S98616- EX

Sire of: 'Diana'; 3688 kg (305d); Life: 18,030 kg



Champ's Dam: 'Chablis' EX  
2074 kg (305d) 3.8 2.9  
Life: 10,874 kg  
5 daughters: 2EX, 3 VG  
- all over 2100 kg (305d)

### BRIGHTER FUTURES YANA

-[CAN]S86530-



(CAN)S111981

## Grasshill Tribute **CORNERSTONE**

Breeder: Grasshill Farms Ltd., Bobcaygeon, ON

- Cornerstone is Canada's former #1 buck for Overall Combined Index and for Type Index! What a great opportunity to raise the overall genetics of your herd!
- Dam is EX with 5 \*P records. Best record is:  
4-0 305 2,438 kg 69F 2.83%F
- 2nd Dam: VG \*P 305 1,804 kg 4.8%F 3.2%F
- Expect Cornerstone to transmit the tremendous components of his EX92 dam, well attached udders and depth of rib. *Cornerstone is a Game Changer!*

### CAN-EBV's and Indexes

December 2017 (GoatGenetics.ca)

#### EBV's

Milk kg	79	General Appearance	4.8
Fat kg	2.4	Body Capacity	5.1
Protein kg	2.9	Feet & Legs	5.0
Teats	5.8		
Fore Udder	5.5	Indexes	
Rear Udder	5.8	Combined	136
Median Susp. Ligament	5.6	Production	122
Dairy Character	5.3	Type	135



For more information, contact:

7660 Mill Road, Guelph, ON N1H 6J2  
Tel: 1-888-821-2150 • Fax: (519) 763-6582  
Email: [goats@eastgen.ca](mailto:goats@eastgen.ca) • [www.eastgen.ca/goats](http://www.eastgen.ca/goats)

EastGen







Maternal G'Dam

SG Kapra Vista See N's Believe N 10\*M EX92 2E

- 2012 ADGA Breed Leader : #6 for Milk, #3 for Fat and #2 for Protein
- |      | 1-10 | 305  | 4164  | 3.5% | 145  | 3.0% | 125 | Top Ten (lbs) |
|------|------|------|-------|------|------|------|-----|---------------|
|      |      | 320  | 4337  | 3.5% | 152  | 3.0% | 131 |               |
| 2-10 | 305  | 3957 | 3.7%  | 147  | 3.1% | 121  |     |               |
|      | 321  | 4102 | 3.7%  | 153  | 3.1% | 126  |     |               |
| 4-10 | 305  | 4274 | 3.4%  | 144  | 3.0% | 127  |     |               |
|      | 322  | 4358 | 3.45% | 148  | 3.0% | 131  |     |               |
| 5-11 | 292  | 4135 | 3.05% | 126  | 3.0% | 124  |     |               |

For further information, contact: EastGen

7660 Mill Road, Guelph, ON N1H 6J1

Tel: 1-888-821-2150 • Fax: (519) 763-6582

Email: [goats@eastgen.ca](mailto:goats@eastgen.ca) • [www.eastgen.ca/goats](http://www.eastgen.ca/goats)



(CAN)CS147653

## Kapra Vista LGI DESTINY

Breeder: Kapra Vista Saanens, Lee & Jeanette Haas, Osceola, WI

- Destiny's sire, +B SG Loughlin's Grand Illusion VG 88 ELITE SIRE, is sired by \*B Cherrypines Mr Peterman EX 90 3E and his dam, CH Loughlin's Just A Dream is a 3X GCH, 2X BOB and 2X RCH, 1X BUIS.
- His dam is daughter of SG Kapra Vista See N's Believe N 10\*M EX 92 2E who was #6 for Milk, #3 for Fat and #2 for Protein on the 2012 ADGA Breed Leader List
- Expect unlimited production potential from a family with 5 straight generations of \*M dams with a total of 40\* and we expect more type than is being predicted. All 5 direct \*M dams are also scored EX 92. Now that's balance!

### CAN-EBV's and Indexes

December 2017 (GoatGenetics.ca)

EBV's		Indexes	
Milk kg	132	Combined	124
Fat kg	5.40	Production	143
Protein kg	4.40	Type	95
Teats	5.1		
Fore Udder	5.1		
Rear Udder	5.1		
Med. Susp. Ligament	5.4		
Dairy Character	5.0		
General Appearance	5.0		
Body Capacity	5.2		
Feet & Legs	4.9		



(CAN)S137788

## Pepperpot CA DICTATOR

Breeder: Patrick W. McLean, Campbellcroft, ON

- Dictator's sire, Capricorn View Winner Altair \*S EX92, is one of the highest type bucks in Canada as is Dictator and Paternal Brother Kampfire Altair's Avitar
- His dam is GCH Pepperpot PPH Destiny's Child \*M EX94 SELECT Doe. As a 3-YR-Old, Destiny's Child had 7.1 kg 3.3% Fat 26.53 points. In 2012, she won the East National Best Udder.
- Her 7/8 sister, GCH Pepperpot PHS Ultimate Destiny \*M EX92 SELECT Doe, had a 3-YR-Old record of 7.3 kg 3.6% F 28.73 points (#1 in CAN for \*M in 2016). Also in 2016, Ultimate Destiny was named the Reserve Grand Champion at the Royal Winter Fair. Dictator is bred to offer solid production & outstanding conformation!



Capricorn View Winner Altair \*S EX92



Pepperpot CA Delilah \*M VG87  
2016 - RWF 2nd Milking Yearling

For further information, contact: **EastGen**

7660 Mill Road, Guelph, ON N1H 6J1

Tel: 1-888-821-2150 • Fax: (519) 763-6582

Email: [goats@eastgen.ca](mailto:goats@eastgen.ca) • [www.eastgen.ca/goats](http://www.eastgen.ca/goats)



### CAN-EBV's and Indexes

December 2017 (GoatGenetics.ca)

EBV's		Indexes	
Milk kg	-1	Combined	101
Fat kg	-1.63	Production	92
Protein kg	-0.80	Type	113
Teats	5.3		
Fore Udder	5.2		
Rear Udder	5.2		
Med. Susp. Ligament	5.0		
Dairy Character	5.1		
General Appearance	5.1		
Body Capacity	5.0		
Feet & Legs	5.1		



(CAN)CS125355

## Kapra Vista Icon **FRANCHISE**

Breeder: Lee and Jeanette Haass, Osceola, WI USA

- Franchise's dam "Fenom", scored EX91, is a two-time breed leader for production in the U.S. on their Top Breed Leader List!!
- "Fenom's" Best Record: 2,495 kg 67F 67P
- Franchises' two granddams were both U.S. National Champion Show winners.
- Expect Franchise to offer a pleasing balance of extreme production and solid type.

### CAN-EBV's and Indexes December 2017 (GoatGenetics.ca)

#### EBV's

Milk kg	18	General Appearance	5.7
Fat kg	0.4	Body Capacity	5.1
Protein kg	-0.1	Feet & Legs	4.9

Teats 5.2

Fore Udder 5.2

Rear Udder 5.0

Median Susp. Ligament 5.2

Dairy Character 5.2

#### Indexes

Combined 114

Production 104

Type 128



For more information, contact:

7660 Mill Road, Guelph, ON N1H 6J2  
Tel: 1-888-821-2150 • Fax: (519) 763-6582  
Email: goats@eastgen.ca • www.eastgen.ca/goats

EastGen





Sherry's Sannens

**Dam:** SG Sherry's SUV Cricket EX90

3-00 4,680 lbs 142 Fat 122 Protein

4-01 4,870 lbs 139 Fat 125 Protein

**2nd Dam:** SG SHERRY'S VITOLE CREE EX90

3-00 3,910 lbs 113 Fat 108 Protein

4-11 3,440 lbs 102 Fat 92 Protein

5-11 3,330 lbs 99 Fat 88 Protein

7-00 3,720 lbs 112 Fat 101 Protein

8-00 4,150 lbs 115 Fat 107 Protein

**TOTAL Over 9 Lactatons:** 28130 lbs lifetime Milk

For further information, contact: **EastGen**

7660 Mill Road, Guelph, ON N1H 6J1

Tel: 1-888-821-2150 • Fax: (519) 763-6582

Email: [goats@eastgen.ca](mailto:goats@eastgen.ca) • [www.eastgen.ca/goats](http://www.eastgen.ca/goats)



(CAN)CS147652

## Sherry's BW GRASSHOPPER

Breeder: Sherry's Saanens, Sherry Panuska, New Richland, MN

- Grasshopper is sired by SG "Boy Wonder". *Boy Wonder* is a full brother to the amazing SG Kapra Vista LGI Willa 9\*M who was ranked #3 for Milk, #6 for Fat and #2 for Protein on the 2015 ADGA Breed Leader List.
- His dam, SG Sherry's SUV Cricket EX90, has two records of 4,680 lbs or over. His EX90 2nd dam has an unreal lifetime production of 28,130 lbs of Milk over 9 lactations.
- Grasshopper was bred to be great and that's exactly what he promises to be ranking #2 for 2018 Young Sire Development Program with an ETA 1:2 of 101 (Type Over Production) in the U.S.!!!

### CAN-EBV's and Indexes

December 2017 (GoatGenetics.ca)

EBV's		Indexes	
Milk kg	173	Combined	141
Fat kg	4.40	Production	144
Protein kg	4.20	Type	135
Teats	5.2		
Fore Udder	5.2		
Rear Udder	5.2		
Med. Susp. Ligament	5.2		
Dairy Character	5.2		
General Appearance	5.1		
Body Capacity	5.7		
Feet & Legs	5.0		





Sherry's Sannens

**Dam: SG Sherry's SUV Irish**

2-11 4,840 lbs 155 Fat 124 Protein

3-01 4,840 lbs 164 Fat 126 Protein

**2nd Dam: SG Sherry's Pipin Ivette VG86**

4-08 3,900 lbs 124 Fat 104 Protein

For further information, contact: **EastGen**

7660 Mill Road, Guelph, ON N1H 6J1

Tel: 1-888-821-2150 • Fax: (519) 763-6582

Email: [goats@eastgen.ca](mailto:goats@eastgen.ca) • [www.eastgen.ca/goats](http://www.eastgen.ca/goats)



## (CAN)CS147651 Sherry's Secret IDRIS

Breeder: Sherry's Saanens, Sherry Panuska, New Richland, MN

- Idris' sire, +\*B SG Kapra Vista Dre Not A Secret, stems from a 5\*M EX91 2E SG dam with two records over 4,000 lbs. His 2nd dam is a SG 4\*M EX92 2E doe with a 4,489 lbs record who is backed by a SG EX91 dam with 3\*M with a record 3,967 lbs of Milk.
- His dam is the renowned SG Sherry's SUV Irish VG88. Irish has a best record of an amazing 4,840 lbs as a 3-YR-Old and followed that with a 4-YR-Old record of a record with 4,840 lbs earning her #6 for Milk, #8 for Fat, #10 for Protein on the '15 ADGA Breed Leader List and #6 for Milk in 2016!
- Idris will offer an unprecedented opportunity for production improvement and solid type.

### CAN-EBV's and Indexes

December 2017 (GoatGenetics.ca)

EBV's		Indexes	
Milk kg	215	Combined	134
Fat kg	5.90	Production	157
Protein kg	4.70	Type	100
Teats	5.1		
Fore Udder	5.0		
Rear Udder	5.1		
Med. Susp. Ligament	5.4		
Dairy Character	5.0		
General Appearance	5.0		
Body Capacity	5.2		
Feet & Legs	4.9		



## 2nd Dam: SGCH Caprikorn Zeppo Cassiopeia 3\*M EX92 2E

- 2017 US Saanen Total Performer Winner
- 2016 NSBA #2 Overall Gold Seal Award Winner for Milk (#3 Fat, #5 Protein)
- 2015 ADGA #7 Milk, #5 Fat and #8 Protein USDA Top 5% of Does

## Dam: SG Caprikorn Boss Eridana VG89

2-01 328 4,170 lbs 146 Fat 116 Protein

3-01 273 4,480 lbs 147 Fat 120 Protein

**"Eridana had two tests over 20 lbs in her 3-YR-Old record!"**

- VG89 x EX92 x VG89 x EX90

## 3rd Dam: SG Caprikorn Renov's Ztartrek VG89

- 2015 Top 10 Breed Leaders List #1 Milk
- 2011 NSBA Gold Seal Award Winner 99th Percentile Elite
- **"The PRIDE of our herd"** ~ Scott Hoyman (Caprikorn Farms)

For further information, contact: **EastGen**

7660 Mill Road, Guelph, ON N1H 6J1

Tel: 1-888-821-2150 • Fax: (519) 763-6582

Email: [goats@eastgen.ca](mailto:goats@eastgen.ca) • [www.eastgen.ca/goats](http://www.eastgen.ca/goats)



## (CAN)CS147927 Caprikorn Farro JUPITER

Breeder: Caprikorn Farms, Gapland, MD

- Jupiter stems from arguably the heaviest milking Saanen herd in the U.S. and he has elite Top 10 List animals throughout both sides of his pedigree.
- Jupiter's sire has a 2X Winner of the Lifetime Milk Award and a #3 on the All-Time '14 Elite Buck list on his paternal side and on the maternal side, he has a 2X Top 10 ADGA Breed Leaders List doe ("Cumin") and a Lifetime Milk Award Winner who has close to an amazing 900 lbs of fat!
- We think this says it all about his dam, ***"CAPRIKORN put 108 does on test in 2017 and JUPITER'S dam beat them all!"*** This presents an opportunity for breeders that is second to none!

### CAN-EBV's and Indexes

December 2017 (GoatGenetics.ca)

EBV's		Indexes	
Milk kg	161	Combined	137
Fat kg	5.50	Production	148
Protein kg	4.40	Type	120
Teats	5.2		
Fore Udder	5.0		
Rear Udder	5.1		
Med. Susp. Ligament	5.2		
Dairy Character	5.1		
General Appearance	5.8		
Body Capacity	5.0		
Feet & Legs	4.9		



# GRASSHILL DISCOVERY RADAR -[CAN]S141577- SEW 369C



**GRASSHILL DISCOVERY RADAR**  
-[CAN]S141577- SEW 369C

Nearest 4 Dam Prod Avg (305d): 1836 kg 3.6f 3.1p

Indexes (CI,P,T): 144-151-106

**Heterozygous Scrapies Resistant**

**N.B. All Production Amounts are listed in Kilograms (kg)-**  
**To convert to LB: multiply by 2.205 (1000 kg = 2205 lb)**



Grasshill Discovery Radar - SEW 369C



Grasshill Target N Buckaroo VG

## GRASSHILL BUCKAROO DISCOVERY -[CAN]S134168

*Lots of Size, Strength & Production in this buck's pedigree*

*Below: his Maternal Granddam, 'Diana'*



**'Diana'**

*Pictured at the start  
of her 4th lactation in  
which she produced  
**3688 kg (8131 lb)**  
...one of the highest  
305 day records in  
the world!  
Lifetime: **18,030 kg***

**'RADAR' : combining 'Patricia' x 'Diana' families**

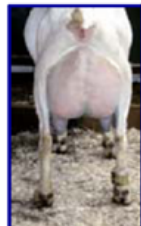


Grasshill Honour's Patricia EX, 2719 kg (305d)

## GRASSHILL PARAMOUR RASPBERRY -[CAN]S120591

1790 kg (305d) 3.1f 3.3p; 1580 kg (305d) 3.6f 3.1p

Paternal Brother: 'Narrator', the sire of 'Xmas' (below)



**Inheriting Nadia's Persistency!**

**... 'Xmas' ...**

Sire: 'Paramour Narrator'

Granddam: 'Nadia'

*Kidding at 1yr3m, Xmas is still  
milking in her 2nd lactation  
2020 kg 4.0f 3.1p (305d)*

*No Dry Period! 1014 DIM  
Total to date: 5960 kg*

## <--GRASSHILL TARGET N BUCKAROO-[CAN]S110901- VG



Grasshill Target's Dewdrop-2140 kg 4.3f 3.0p

## GRASSHILL TITAN DISCO -[CAN]S126686-

1yr8m: 1410 kg (305d) 3.8f 3.1p

**2 Maternal Sisters: 1st lactations over 2000 kg (305 days)**



Diana's Paternal Sisters from Sire 'Champ'  
Each: over 11,000 kg total & 2 lact over 2000 kg (305d)

## GRASSHILL DIEGO PARAMOUR -[CAN]S111945-

Maternal Sister: 'Potpourri' (below); 2030 kg (305d)



Grasshill Trail Potpourri - 2030 kg (1yr3m 305d)

## GRASSHILL TARGET N BLUEBERRY -[CAN]S110900

2420 kg (305d) 3.4f 3.2p; **Total: 10,910 kg**

*... 7 daughters from natural service ...*

## GRASSHILL TARGET NOVA -[CAN]S104210-

Full Sister: 'Nouvelle', VG, 2010 kg (305d) 3.5f 3.0p

<- Pat Sister: 'Dewdrop', VG, 2140 kg (305d) 4.3f 3.0p

Mat Sister: 'Nadia', VG, **19,830 kg = 43,718 lb**

## GRASSHILL LAD'S BLUEBELL -[CAN]S104215-

1933 kg (305d); 10,690 kg to date (still milking!)

Sire: 'Lad' EX; His Dam: 2693 kg (305d); **Total: 11,570 kg**

Dam: 'Belle', 2258 kg (305d) 3.5f 2.9p; **Total: 13,400 kg**

Next Dam: EX, 2166 kg (305d); **Total: 11,570 kg**

## GRASSHILL DYNAMO TITAN -[CAN]S110857-

Dam: 'Tiara' EX, 2451 kg (305d); **Total: 14,440 kg**

## GRASSHILL CHAMP'S DIANA -[CAN]S100700-

VG- 88, **Life: 18,030 kg** (pictured below & far left)



Grasshill Champ's Diana VG-88; 3688 kg - 305d

## GRASSHILL SCIMITAR DIEGO -[CAN]S110778-

Dam: EX, 1869 kg (305d) 4.2f 3.2p; **Total: 13,480 kg**

## GRASSHILL HONOUR'S PATRICIA -[CAN]S98613-

<-- pictured far left; EX, **Lifetime: 14,420 kg**

4yr11m: 2719 kg (305d) 3.3f 2.9p - 14 days dry

then: 5yr11m: 2860 kg (305d) 3.0f 2.8p

**Five Consecutive Lact Average (305d) : 2244 kg**

<-- Daughter: 'Potpourri', 2030 kg (305d)

Dam: 'Pansy' EX, 1988 kg (305d); **Total: 9786 kg**

Mat Sisters: 'Peaches', 2562 kg (305d); **Total: 9520 kg**

'Periwinkle', 2265 kg (305d); **Total: 9703 kg**

'Poppy', 1903 kg (305d) 4.2f 3.3p; **Total: 9300 kg**

'Primrose', 2222 kg (305d); **Total: 7186 kg**

## GRASSHILL TARGET NOVA -[CAN]S104210-

Pat Sister: 'Dewdrop', VG, 2140 kg (305d) 4.3f 3.0p

## GRASSHILL LAD'S BLUEBELL -[CAN]S104215-

1933 kg (305d); 10,690 kg to date (still milking!)



Dam

(CAN)CS147650

## Kapra Vista LA WINDBREAK

Breeder: Kapra Vista Saanens, Lee & Jeanette Haas, Osceola, WI

- This is exciting! An impressive \*B Loughlin's Avalanche from the renowned SG Kapra Vista LGI Willa 9\*M EX91 2E.
- Willa was ranked #3 for Milk, #6 for Fat and #2 for Protein on the 2015 ADGA Breed Leader List
- Behind Willa is SG Kapra Vista Icon Wonder 8\*M EX92 2E who had a 2-YR-Old record of close to 4,000 lbs. and she is backed by SG Kapra Vista Knight Windlass 7\*M EX92 who had a Top Ten record of 4,460 lbs! Expect Windbreak to be a source for strong frames, outstanding udders and a big boost in production.

### CAN-EBV's and Indexes

December 2017 (GoatGenetics.ca)

EBV's		Indexes	
Milk kg	83	Combined	117
Fat kg	2.20	Production	122
Protein kg	2.30	Type	110
Teats	5.2		
Fore Udder	5.1		
Rear Udder	5.2		
Med. Susp. Ligament	5.1		
Dairy Character	5.1		
General Appearance	5.1		
Body Capacity	5.0		
Feet & Legs	5.0		

SG Kapra Vista LGI Willa 9\*M EX91 2E

- 2015 ADGA Breed Leader : #3 for Milk, #6 for Fat and #2 for Protein

1-10	305	3198	2.7%	87	3.0%	95
2-11	305	3159	2.8%	88	2.9%	93
4-11	305	5019	3.1%	157	2.9%	146
	325	5207	3.1%	163	2.9%	152
5-11	293	4242	3.0%	127	2.9%	125

For further information, contact: **EastGen**

7660 Mill Road, Guelph, ON N1H 6J1

Tel: 1-888-821-2150 • Fax: (519) 763-6582

Email: [goats@eastgen.ca](mailto:goats@eastgen.ca) • [www.eastgen.ca/goats](http://www.eastgen.ca/goats)





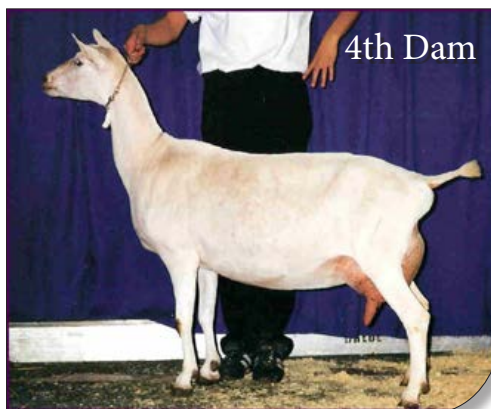
# Kapra Vista LA WINDBREAK



SG Kapra Vista Icon Wonder 8\*M EX92 2E  
● 2-00 305 3994 lbs 2.8% 113 2.9% 72



SG Kapra Vista Knight Windlass 7\*M EX92  
4-10 305 4460 3.6%F 2.6%P Top Ten



SG Kapra Vista Marquis Windfree 6\*M EX92 3E

## Kapra Vista LA Windbreak's Sire:

\*B Loughlin's Avalanche



SGCH Udderly-Crazy BE Snowfall 2\*M EX92



SGCH Sartyr Kojack Trevi 7\*M EX93 2E

For further information, contact:

7660 Mill Road, Guelph, ON N1H 6J1

Tel: 1-888-821-2150 • Fax: (519) 763-6582 Email: [goats@eastgen.ca](mailto:goats@eastgen.ca) • [www.eastgen.ca/goats](http://www.eastgen.ca/goats)



**Dam:** GCH Merrigold KWF Enchanted \*M EX 92 - SELECT Doe

- 3-1 128 days 4.2 kg Milk with 4.23%Fat
- Show record 2016: 2 x GCH, 1 x Res GCH, 1 x BIS, 1 x BUIS
- Show record 2015: 4 x GCH, 4 x Res GCH, 4 x BIS, 3 x BUIS

(CAN)L145140

## Double\*Dutch\* TEC ATREYU

Breeder: Alex and Theo Emmons, Southwold, ON

- Atreyu's sire, Tempo Everclear, is a virtual who's who of US Lamancha genetics, with his sire's side including animals such as Rockin-CB Prankster, Little Orchard Pure Thrill and the lovely does of Lucky\*Star, who possess such productivity and longevity and he's out of the amazing SGCH Tempo Evianna 9\*M EX 93 \*ELITE\*!
- Atreyu's dam, GCH Merrigold KWF Enchanted \*M EX 92, is Canada's #4 Type Index doe, has gained SELECT doe status & is a 5 x Res GCH and 6 x GCH! Atreyu is bred to be great!

### CAN-EBV's and Indexes December 2017 (GoatGenetics.ca)

EBV's		Indexes	
Milk kg	52	Combined	115
Fat kg	3.40	Production	123
Protein kg	3.59	Type	103
Teats	5.0		
Fore Udder	5.2		
Rear Udder	5.1		
Med. Susp. Ligament	5.0		
Dairy Character	5.0		
General Appearance	4.9		
Body Capacity	5.0		
Feet & Legs	5.0		

For further information, contact: EastGen

7660 Mill Road, Guelph, ON N1H 6J1

Tel: 1-888-821-2150 • Fax: (519) 763-6582

Email: goats@eastgen.ca • www.eastgen.ca/goats







**Atreyu's Dam (as a 3 Year Old):**

GCH Merrigold KWF Enchanted \*M EX 92 - SELECT Doe

**Enchanted's Early Progeny Results:**

- **SPELLBOUND**
  - 2017 show record as milking yearling shown only twice
  - '17 East National Show 1st Place/1st Udder Milking Yearling
  - '17 Simcoe Show 2nd Place/2nd Udder Milking Yearling (to her sister in a class of 13)
- **RUNE**
  - 2017 show record as milking yearling shown 7 times
  - 1st Place/1st Udder 2017 Royal Winter Fair
  - 7 x 1st Place/1st Udder Milking Yearling
  - 3 x Res Grand Champion of Breed



**Atreyu's Maternal Granddam Tempo Evianna 9\*M EX 93 \*ELITE\***

- 3-11 305 3475 lbs 130 3.7% 109 3.1% '12 ADGA Top Ten
- Lifetime: 1905 19288 704 3.7% 617 3.2% (10 lb a day lifetime average)
- 2009 Res National Champion (as a yearling!)
- 2012 Res National Champion, Best Udder, La Mancha Total Performer
- 2013 National Champion, Best Udder, La Mancha Total Performer, High Lifetime Milk & Fat
- 2015 Res National Champion, Best Udder, La Mancha Total Performer, High Lifetime Milk & Fat
- Mat. Great Granddam: SGCH Tempo Kristi 8\*M \*Elite doe\*
  - 2-10 305 3235 lbs 118 3.6% 112 3.5%
  - 3 x GCH, 3 x Res GCH, 1 x BOB, 3 x BUOB, 1 x BUIS

For further information, contact:

7660 Mill Road, Guelph, ON N1H 6J1

Tel: 1-888-821-2150 • Fax: (519) 763-6582 Email: [goats@eastgen.ca](mailto:goats@eastgen.ca) • [www.eastgen.ca/goats](http://www.eastgen.ca/goats)



Raintree EZ Mr Darcy VG-86

(CAN) L138612

## Raintree EZ MR DARCY

Breeder: Alex and Theo Emmons, Southwold, ON

- Mr Darcy's sire, J-Havens EE Livin' Easy, is a son of the 2014 ADGA National Champion J-Haven's Ftlivin'W Ambition.
- His sire is heavily line bred along the Kastdemur genetics of Shasta EX 92/Evian EX 94(2006 Res National Champion, 2008/2009 National Champion) that is virtually dripping with National Champions on every level.
- His dam, SGCH Raintree OL Caramel Swirl 3\*M EX 91 (2014 ADGA Breed List #4 Milk #3 Protein), brings in milk & show while combining long standing genetics from South-Fork, One\*Oak\*Hill and reaching back to Redwood Hill's Beau Charmer, making this an exciting combination.

### CAN-EBV's and Indexes

December 2017 (GoatGenetics.ca)

EBV's		Indexes	
Milk kg	1	Combined	118
Fat kg	2.80	Production	113
Protein kg	0.70	Type	125
Teats	5.4		
Fore Udder	5.0		
Rear Udder	5.2		
Med. Susp. Ligament	5.2		
Dairy Character	5.1		
General Appearance	5.1		
Body Capacity	5.0		
Feet & Legs	5.0		

For further information, contact: EastGen

7660 Mill Road, Guelph, ON N1H 6J1

Tel: 1-888-821-2150 • Fax: (519) 763-6582

Email: [goats@eastgen.ca](mailto:goats@eastgen.ca) • [www.eastgen.ca/goats](http://www.eastgen.ca/goats)





Dam



Mr Darcy's Paternal G'Dam



J-Haven's Ftlin'W Ambition  
● 2014 ADGA National Champion



**Senior Get of Sire:**  
++\*B SG Redwood Hill's Beau Charmer  
9\*M EX 93 \*ELITE\*

## Mr Darcy's Dam:

SGCH Raintree OL Caramel Swirl 3\*M EX 91  
(14 ADGABreed List #4 Milk #3 Protein)

## Swirl's Classification and Production Records:

- 5-05 EX 91 (VEEE) (permanent)
- 2-0 305 3490 lbs 129 Fat 110 Protein Top Ten
- 3-2 305 3899 lbs 139 Fat 122 Protein Top Ten
- 4-2 305 3485 lbs 129 Fat 112 Protein Top Ten

## Swirl's Show Records:

- 2009: 2 x 1st Place, 2 x 3rd Place, 1 x Res GCH Jr. Doe
- 2010: 2 x 1st Place, 1 x 2nd Place, 1 x GCH, 1 x BUOB
- 2011: 2 x 1st Place, 2 x 2nd Place, 2 x GCH
- 2012: 5 x 1st Champion Challenge, 5 x BOB, 5 x BUOB, 3 x BSDIS, 4 x BUIS
- 2013: 4 x 1st Champion Challenge, 2 x 2nd Champion Challenge, 4 x BOB, 4 x BUOB  
3 x BSDIS, 3 x BUIS, 10th Place 4 year old National Show
- 2014: 13th place 5 & 6 year old National Show, 6 x BOB, 6 x BUOB, 6 x BUIS, 3 x BSDIS  
National Goat Expo

For further information, contact:

7660 Mill Road, Guelph, ON N1H 6J1

Tel: 1-888-821-2150 • Fax: (519) 763-6582 Email: [goats@eastgen.ca](mailto:goats@eastgen.ca) • [www.eastgen.ca/goats](http://www.eastgen.ca/goats)



King Candy

Haldibrook King Candy

(CAN)N132969

## Haldibrook KING CANDY

Breeder: Rebecca & Adrian Holvik, Meaford, ON

- King Candy's sire, \*B Hoanbu Status Symbol, is a full brother to the 2013 ADGA Nationals Res. Champion and was named ADGA National Show Nubian Premier Sire in 2010 & again in 2013.
- King Candy is the Best of the Best! He's ranked #1 for Overall Combined Index and #1 for Production Index as is his dam GCH Caprix IMP T-Sugar \*M EX94/92 3E
- Sugar is definitively a Total Performer at Haldibrook, a Top Milker, Top classifying doe, Top Show doe and also she is starting to prove herself as a brood doe. She and her son King Candy are a must for any serious Nubian breeder!

### CAN-EBV's and Indexes December 2017 (GoatGenetics.ca)

EBV's		Indexes	
Milk kg	167	Combined	150
Fat kg	8.12	Production	161
Protein kg	3.81	Type	103
Teats	5.2		
Fore Udder	5.1		
Rear Udder	5.2		
Med. Susp. Ligament	5.0		
Dairy Character	5.1		
General Appearance	4.8		
Body Capacity	4.9		
Feet & Legs	5.1		

For further information, contact: **EastGen**

7660 Mill Road, Guelph, ON N1H 6J1

Tel: 1-888-821-2150 • Fax: (519) 763-6582

Email: [goats@eastgen.ca](mailto:goats@eastgen.ca) • [www.eastgen.ca/goats](http://www.eastgen.ca/goats)







Dam



Daughter of Sugar



### Senior Get of Sire:

- Full sisters of King Candy's sire
- Sired by +\*B Lakeshore-Farms Star Status LA91EEE

### King Candy's Dam:

GCH CAPRIX IMP T-SUGAR \*M EX94/92 3E

### King Candy's Production Records:

Year	Age	DIM	Kg Milk	BF	Prot	Points
2014	3-11	47	5.20	4.56%	3.33%	22.36
2015	5-00	66	5.80	4.76%		25.58
2016	6-00	101	5.00	4.97		22.96

### King Candy's Classification Records:

Year	Age	Overall	Rump	MS	DS	F & L
2012	2-05	87	84	86	87	87
2014	3-11	91	91	90	94	91
2015	4-10	93	97	92	95	93
2016	6-01	94	93	92	94	94

For further information, contact:

7660 Mill Road, Guelph, ON N1H 6J1

Tel: 1-888-821-2150 • Fax: (519) 763-6582

Email: [goats@eastgen.ca](mailto:goats@eastgen.ca) • [www.eastgen.ca/goats](http://www.eastgen.ca/goats)



Moonlight



Meadow

### Full sisters of King Candy's sire:

Left:

SGCH Hoanbu Status Misty Moonlight 2\*M EX92

Right:

SG Hoanbu Status Misty Meadow 2\*M EX90

### King Candy's Notable Show Records: Permanent Champion

- 2017 - Royal Winter Fair Res. Gr. Champion, 1st place/1st Udder Milkers, 5 Years and Over
- 2017 - Royal Winter Fair 1st Place Dam and Daughter (Haldibrook Dandy Kortana VG 85, 2nd Place Milking Yearling)
- 2015 - CGS East National & Royal Winter Fair Reserve Grand Champion & RBUEOB
- 2014 - Royal Winter Fair Reserve Champion
- 2014 - CGS East National Reserve Grand Champion & RBUEOB
- 2014 - GCH & BDIS Brooklin Spring Fair
- 2012 - Expo Quebec GCH & BUOB/BUIS

(CAN)T133134

### La Mountain NAKG CEDARWOOD

Breeder: Allan and Sharon Lamontagne, B.C.

- Cedarwood's sire, Neshaminy Acres KM Goldenrod, is now classified EX91. Goldenrod's dam was a National ADGA Grand Champion.
- Cedarwood's dam, La Mountain GCE Zinnia VG86, is a CGS sanctioned show winner as was her maternal sister La Mountain GCE Lotus (Best in Show, '14 Nanaimo).
- Their dam, La Mountain GNA Jasmine, is Canada's #1 Overall Togg doe and #1 Production Togg doe! The famous Jasmine is also a 2X Canadian West National Grand Champion! Jasmine earned 3 legs towards a Certificate of Permanent Champion. She has also recently won Select Doe Status.



Dam

**Dam:** La Mountain GCE Zinnia VG86 (2-2)

#### CAN-EBV's and Indexes December 2017 (GoatGenetics.ca)

##### EBV's

Milk kg	-50	General Appearance	5.1
Fat kg	-1.6	Body Capacity	5.1
Protein kg	-1.4	Feet & Legs	4.8
Teats	5.3		
Fore Udder	5.1	Indexes	
Rear Udder	4.9	Combined	89
Med. Susp. Ligament	4.8	Production	86
Dairy Character	5.2	Type	100

For further information, contact: EastGen

5653 Hwy #6N, Guelph, ON N1H 6J2

Tel: 1-888-821-2150 • Fax: (519) 763-6582

Email: goats@eastgen.ca • www.eastgen.ca/goats







**2014 CGS Sanctioned Nanaimo Fair: Best Herd (pictured L to R)**

- Zinnia (Cedarwood's dam) 1st Place Milking Two-Year-Old
- Lotus (full sister to Cedarwood's dam) Best in Show
- Jasmine (g'dam of Cedarwood; dam of Zinnia, Lotus and La Mountain GCE Dogwood)



**Paternal Granddam**

SGCH Neshaminy Acres CD Aloha EX93

- 2008 ADGA National Grand Champion, '06 National Res. Gr. Ch.
- 4\*M 3-04 305 3280 3.0 99 2.5 83



**Maternal Granddam**

La Mountain GNA Jasmine VG89 - Select Doe, Permanent Grand Champion

- 2X West National Grand Champion
- Canada's #1 Overall Combined Index Toggenburg doe
- Canada's #1 Production Index Toggenburg doe
- Canada's #4 Type Index Toggenburg doe
- Dam of Canada's #1 Overall Index Buck "Dogwood"
- Jasmine's dam: Wynngate N.A. Buttercup EX92  
- 5X Grand Chamion, 1X Best in Show



(CAN)T133140

## La Mountain GCE DOGWOOD

Breeder: Allan and Sharon Lamontagne, B.C.

- Dogwood's sire, Galilee EF Czee's Emissary, is now classified EX92 and in 2012, he received Permanent Grand Champion status.
- Dogwood's dam, La Mountain GNA Jasmine, is Canada's #1 Overall Toggo doe and #1 Production Toggo doe! The famous Jasmine is also a 2X West National Grand Champion!
- Expect the exceptionally well-bred Dogwood to offer impressive production improvement and for those with an eye for the show ring, the stylish, fancy-uddered kind. *Dogwood is the TOTAL PACKAGE!*

### Dam: La Mountain GNA Jasmine VG89 - Select Doe

- 2X West National Gr. Ch., Permanent Gr. Ch. Status
- Canada's #1 Overall Combined Index Toggenburg doe
- Canada's #1 Production Index Toggenburg doe
- Canada's #4 Type Index Toggenburg doe
- G'Dam of EastGen's "Cedarwood"
- Jasmine's dam: Wynngate N.A. Buttercup EX92 - 5X Grand Chamion, 1X Best in Show

### CAN-EBV's and Indexes

December 2017 (GoatGenetics.ca)

#### EBV's

Milk kg	104	General Appearance	5.4
Fat kg	0.7	Body Capacity	5.0
Protein kg	0.9	Feet & Legs	4.9
Teats	5.5		
Fore Udder	5.5	Indexes	
Rear Udder	5.1	Combined	126
Med. Susp. Ligament	4.9	Production	118
Dairy Character	5.3	Type	122

For further information, contact: **EastGen**

5653 Hwy #6N, Guelph, ON N1H 6J2

Tel: 1-888-821-2150 • Fax: (519) 763-6582

Email: [goats@eastgen.ca](mailto:goats@eastgen.ca) • [www.eastgen.ca/goats](http://www.eastgen.ca/goats)







**2014 CGS Sanctioned Nanaimo Fair: Best Herd (pictured L to R)**

- Zinnia (Cedarwood's dam) 1st Place 2-YR-Old
- Lotus (full sister to Cedarwood's dam) Best in Show
- Jasmine (g'dam of Cedarwood; dam of Zinnia, Lotus and La Mountain GCE Dogwood)



**Paternal Granddam**

SGCH Neshaminy Acres CD Aloha EX93

- 2008 ADGA National Grand Champion, '06 National Res. Gr. Ch.
- 4\*M 3-04 305 3280 3.0 99 2.5 83

For further information, contact:

5653 Hwy #6N, Guelph, ON N1H 6J2

Tel: 1-888-821-2150 • Fax: (519) 763-6582 Email: [goats@eastgen.ca](mailto:goats@eastgen.ca) • [www.eastgen.ca/goats](http://www.eastgen.ca/goats)

(CAN)TR28860

## Pryme SHOOT SHOVEL N' SHHH

Breeder: Ryan and Christie Prins, Wooler, ON



**Comments:** **Shoot Shovel N' SHHH** is an ultra-flashy buck to the eye. His dam is a Pryme herd favourite and is solid conformationally - **Pryme Breaking Every Rule VG-85**. She proved herself to be a good, independent mother raising a nice keeper doeling out of Eggs Eggstra Flash N' Chrome. **Breaking Every Rule's** sire was a buck imported a few years ago which produced a game changing buck for Pryme Farms by the name of "**Pryme G-Spot**". There is also the obvious unique value of **Breaking Every Rule** being a granddaughter of the Permanent Champion '**Du Biquet Carel 2EX**'.

'**Breaking Every Rule**' is a great doe all on her own being one of Pryme's best rumped does. She has a GREAT loin and requires no special care to maintain a good working condition. **Breaking Every Rule** is nice and wide across her forehead and exhibits a really beefy quality about her. Her line is consistent at producing superb rumps; for having instinctive mothering ability, producing lots of milk and for producing multiples. ***Pryme Shoot Shovel N' SHH is really a no brainer!***

For more information, contact:

7660 Mill Road, Guelph, ON N1H 6J2  
Tel: 1-888-821-2150 • Fax: (519) 763-6582  
Email: [goats@eastgen.ca](mailto:goats@eastgen.ca) • [www.eastgen.ca/goats](http://www.eastgen.ca/goats)



Pryme

# Shoot Shovel N' SHH

Family Pictures

(CAN)TR28860

Sire: "Flash"



**Sire: Eggs Eggstra Flash N' Chrome**  
**2011 Royal Winter Fair 1st in Class**

"Flash" has been producing aggressive, wide fronted, big boned kids for Pryme Farms. His kids are just plain RUGGED! His doe kids are bold and stand really square with wide heads and powerful muzzles. **Flash** is an extremely wide, muscular buck with a rock hard loin. You truly have to admire that he is a true and honest power house without hiding behind extra fleshing and fat. Put your hands on him....*He's the real deal!*

Sire: "Flash"



Dam



**Dam: Pryme Breaking Every Rule VG-85**

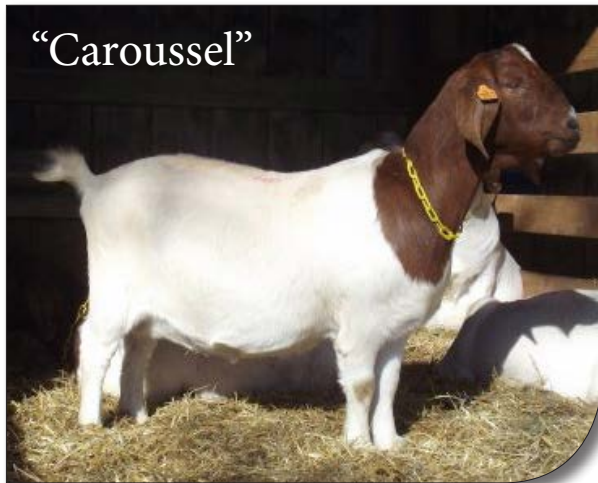


Pryme

# Shoot Shovel N' SHH

Family Pictures

(CAN)TR28860



Maternal Grand-Dam (Breaking Every Rule's Dam):  
Du Biquet Caroussel VG-88



Maternal Great Grand-Dam  
(Breaking Every Rule's G'Dam):  
Du Biquet Akim Carel 2EX



Maternal Grand-Sire (Breaking Every Rule's Sire):  
Rocky Mtns Big Block V8



Big Block V8's Famous Grand-Sire:  
RRD Ruger T307 \*AM EN\*

## Carel's Show Winnings:

Jr. Ch. and Res. Gr. Ch. Doe St-Hyacinthe '06  
Jr. Ch. and Res. Gr. Ch. Doe Expo Quebec '06  
Sr. Ch. and Gr. Ch. Doe Expo Quebec '08  
Res. Sr. Ch. and Res. Gr. Ch. Doe St. Hyacinthe '09  
Res. Sr. Champion Doe RAWF '10  
Overall Gr. Ch. Doe 2011 CMGA East Nationals  
Res. Overall Gr. Ch. Doe Picton Fair CMGA Show '11  
Overall Grand Champion Doe '11 RAWF  
Earned hr CMGA Permanent Ch. Status '11



Pryme

# Shoot Shovel N' SHH

Family Pictures

(CAN)TR28860



Paternal Grand-Sire (Flash's Sire): FIX it in a Flash "Ennobled"



Paternal Grand-Dam (Flash's Dam): HC High C Celtic Princess

For more information, contact:

7660 Mill Road, Guelph, ON N1H 6J2  
Tel: 1-888-821-2150 • Fax: (519) 763-6582  
Email: [goats@eastgen.ca](mailto:goats@eastgen.ca) • [www.eastgen.ca/goats](http://www.eastgen.ca/goats)

  
**EastGen**  
