



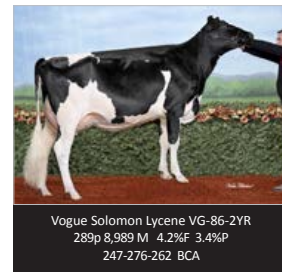
It is amazing how much great news continues to flood in each proof round for our Holstein breeders to take advantage of and this round has a 1st for Canadian Holsteins. As far as we can recollect, there have never been two maternal brothers topping Canada's LPI list but that's exactly what we see today. **Comestar Lautrust** reclaims his #1 GLPI spot (3258 GLPI) while his maternal brother **Comestar Lineman** leaps to #2 GLPI only one point back (3257) with the addition of over 300 new milking daughters.

Despite the annual base change roll back, **Lautrust** experienced jumps in his GLPI and Pro\$ (\$2339) while fighting back the roll back by actually gaining for Milk (+1663 kg) and holding for Conformation (+12). There is no sire higher than **Lautrust** for Pro\$ who has as solid a type rating. The **Immunity+**®, **Robot Ready**® and **Calving Ease** designated **Comestar Lineman** also gained for GLPI (3257) and Pro\$ (\$2271) and not only beat the roll back, **Lineman** actually gained 2 points for Conformation giving him a +13. At +15 for Mammary System, **Lineman** is also the **#1 Udder Sire on Canada's Top 100 GLPI list!**



New to our proven line-up is the long-awaited type specialist **0200HO10146 Walnutlawn Solomon**. The **ShowTime**® and **A2A2** designated **Solomon** is Canada's new #1 Conformation sire with +16. **Solomon**, by **Doorman**, is from a VG-89 10* Lavanguard from a VG-87-2YR 4* FBI that traces back to the renowned Glen-Drummond Splendor VG-86-2YR 39*. **Solomon** has continued to gain popularity internationally as one of the very best sires in the business for siring a special one with capacious frames (+12 Dairy Strength) and correct Feet & Legs (+12 Overall, +13 Heel Depth). Their udders are shallow (8S Udder Depth), silky textured (+11 Texture) and firmly attached (+14 Overall, +16 Fore Attachment) and their Rump structure (+10 Overall, 4L Rump Angle) will be well suited for

many of the more prevalent bloodlines which have a nagging tendency towards high pins. Although his production is moderate (Milk -39), **Solomon** can be used as a source of solid component improvement (+0.25% Fat, +0.16% Protein) and clearly, exceptional type. Our second newly proven addition is the **Immunity+**® McCutchen son **0200HO06635 Snowbiz Livewire**. **Livewire**'s dam is a VG-86-2YR 4* Snowman out of a VG-89 10* Shottle, then an EX-92 5* Bolton who stems from a VG-87 9* full sister to the Class Extra sire **Comestar Lauthority**. **Livewire** debuts with 3090 GLPI, \$2194 Pro\$, +1723 Milk, +55 Fat, +52 Protein and +14 Conformation. Aside from offering solid production, **Livewire** offers shallow udders (7S Udder Depth) and is our highest rated **Immunity+**® sire for Feet & Legs with +14.



(Until August 6/18 subject to availability)

There has been growing popularity of A2 beta-casein milk among consumers and dairy producers. Although many claims have been made about a varying array of health benefits associated with A2 beta-casein milk, it is accepted to "Enhance Digestibility in Milk." EastGen has seen the continuous growth in demand for homozygous A2A2 sires and in response, **we are offering our A2A2 Special!**

			\$	
a2	0777H002942	Silvridge ALBUM *	70	} 30 for \$35
a2	0200H003910	Comestar LAUTRUST *	68	
a2	0777H010668	View-Home CARDINALS *	65	
a2	0200H010146	Walnutlawn SOLOMON	60	
a2	0200H006480	Val-Bisson DOORMAN	58	
a2	0200H010757	Westcoast LIGHTHOUSE	50	} 30 for \$30
a2	0200H007850	KH CINDERDOOR	50	
a2	0200H010989	Claynook RUMMY	50	
a2	0200H002942	Silvridge ALBUM	55	
a2	0200H010708	Progenesis AVATAR	48	
a2	0777H010875	Siemers OVERWING *	45	

* sire limited to 10 doses per package

Some Exciting **NEW** **Genomax**™ *Leading Genetics* Additions to EastGen's Holstein Line-Up

Westcoast ATHABASKA 3459 GPA LPI Euclid x MVP x Epic x VG-88 Ramos x VG-89-2YR
aAa: 423615 GMD DOM 2* Shottle x EX-94-2E Gold-N-Oaks Morty Malibu

- An extremely highly ranked Euclid with 3459 GPA LPI and \$2795 Pro\$
 - Outstanding profitability potential from daughters that are made to last (761 NM\$, 113 Herd Life)
 - High component deviations (+0.45% F, +0.15% P) from healthy daughters that will breed back well (109 DF)
- Areas to protect: Loin, Body Depth



Ste Odile ELECTRIC 3346 GPA LPI Fedex x Supershot x Munition x Snowman x VG-88 12*
aAa: 324156 Baxter x EX-90 7* Goldwyn x VG 14* Income x Comestar Model Lady VG-89 22*

- Exciting Fedex who is bound to make our breeders money with \$2961 Pro\$ & NM\$ of 877 (our best)
 - Offers solid conformation and off the charts Health & Fertility improvement (529 Overall Index)
 - Herd-toppers for production (+2312 Milk, 176 CFP) that will stand the test of time (110HL)
- Areas to protect: Height of Front End, Rear Teat Placement



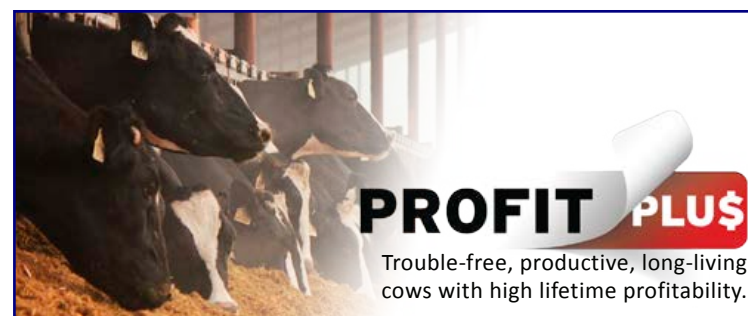
Claynook FAIRVIEW 3267 GPA LPI Duke x VG-87-2YR Silver x VG-87-2YR McCutchen x
aAa: 312546 A2A2 VG-86 1* Robust x VG-87 Zenith x Pine-Tree Martha Sheen (dam of Ammon-Peachy Shauna)

- Top-notch Immunity+ Duke son from a family that has hit the mark as often as any
 - A modern sire with elite potential for production & profitability (2441 Milk, 179 CFP and \$2791 Pro\$)
 - Expect cows with feet made for all environments (+12 Heel Depth) & that are made to last (105 HL, 768 NM\$)
- Areas to protect: Height of Front End, Lact. Persistency



Walnutlawn SIDEKICK 3245 GPA LPI Abbott x EX-92 1* McCutchen x VG-89 10* Lavanguard x
aAa: 312546 A2A2 VG-87-2YR 4* FBI x grand-daughter of Glen Drummond Splendor VG-86-2YR 39*

- Top-notch impressive Abbott son with the potential to make some really outstanding ones
 - A type pattern which will trigger some excitement (+18 Conformation, 3.62 PTAT)
 - Expect a real boost in components (+.39% Fat, +.17% Protein) & a flawless ability to improve all H&F traits
- Areas to protect: Teat Length, Teat Placement

PROFIT PLUS
Trouble-free, productive, long-living cows with high lifetime profitability.

	Pro\$	GPA LPI	Fat (kg)	Prot (kg)	Conf	DF	HL
Ste Odile ELECTRIC *	\$2961	3346	98	78	8	105	110
Woodcrest GRADUAL	\$2850	3426	78	88	8	107	110
Claynook FAIRVIEW *	\$2791	3267	96	83	8	100	105
Westcoast YAMASKA **	\$2787	3414	112	79	8	106	109
Progenesis SUMMERDAY	\$2665	3315	84	73	11	103	107
Progenesis OUTLAST ***	\$2592	3229	86	68	8	103	108
Stantons USEFUL **	\$2561	3329	118	64	8	106	108

* - NEW ** - While Supplies Last *** - Sexed Only
Check out our expanded **Profit Plu\$** Line-up!

Holstein: BASE CHANGES for 2018 vs 2017

Milk 73 kg Fat 5.1 kg Protein 3.5 kg CONF 1.04
HL 0.58 SCS -0.02 Dau. Fert 0.27

More proof details can be found at www.cdn.ca

Amplify the best genetics in your herd with EastGen's expanded line-up of sexed semen.



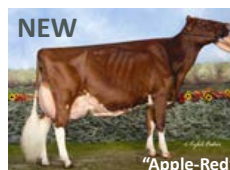
Westcoast **RANDALL 0777HO10641**
Loptimum x McCutchen x 8 generations VG or EX

Loptimum with a solid GPA LPI of 3338, a pleasing type profile and top-notch H&F improvement (+594 Overall).



Legend-Maker **VICTOR 0777HO10890**
Kinpinn x Liquid Gold from "Chief Adeen" family

Offers excellent components (+.31% Fat, +.34% Protein), +14 Conformation & sought-after HL (108) & DF (104)



Siemers **OVERWING 0777HO10875**
High Octane x Mogul x Shottle x "Apple-Red"

Exciting *RDC High Octane from the great "Apple-Red" family with eye-catching Conf. (+14) & high components (+.38% F).

All sorted bulls from Semex are processed with **SexedULTRA**, the most advanced technology in the industry.

Using **SexedULTRA** will get you the results you are looking for!

Check our website weekly for our full list of exciting sires available with **SexedUltra**!