

The first proof round of the year has arrived and we are excited to say that our expansive Holstein line-up has something for everyone. As breeders' goals continue to evolve and change, we are focused and confident that we can provide the best of genetic solutions available anywhere for your herd.

The best of the best in the industry starts with our very own proven **Westcoast Alcove** who continues to dominate Canada's top lists holding down the #1 GLPI, #2 Pro\$, #1 Fat and #1 Combined F&P positions, and that is with close to 1,000 first lactation milking daughters. **Alcove** fought the base change roll back to actually gain for GLPI and all production traits! Our #1 used sire is now +3829 GLPI, \$3175 Pro\$, +2379 Milk, +147 Fat, +245 combined F&P, and a +9 for Conformation! The **A2A2** designated **Alcove** is being recognized as a truly generational sire offering an unprecedented combination of extraordinary production potential with strong capacious frames (+15 Dairy Strength, +14 Chest Width) and Calving Ability (103). Another noteworthy point of distinction is **Alcove's** semen fertility which has earned him the **Fertility First™** designation with 61, his highest level since his debut last April. **Alcove** will continue to be available both as conventional semen and sexed **Day-To-Day**.

The #1 proven Mammary System sire in Canada continues to be the very popular Unix son **Claynook Dealmaker** with a rating of +15. **Dealmaker** is also the #2 proven **Immunity+**® Conformation sire in the World with +13, second only to Semex's **Stantons Alligator**. **Dealmaker**, our third highest used sire, will be available conventional and sexed **Day-to-Day** and as part of our **30 for \$25 Special**, he will undoubtedly remain in high demand.

**Melarry Fuel** should also be considered as one of the industry's best of the best! **Fuel**, our #2 used sire in the last year, is the World's #1 proven sire for Dairy Strength with +17 and with +3407

GLPI, he holds down the #2 proven **Immunity+**® spot. Stemming from five high-producing EX direct dams, **Fuel** is in a league of his own offering elite production and deviations from daughters that are built to complement many of today's common blood lines with well-attached udders (+10 Fore Attachment & Rear Attachment Width), ample Chest Width (+12), Body Depth (+12), correct F&L's (+6), and ideal rumps (+7 Rump, +4 Loin Strength, 5L Rump Angle, 7A Thurl Placement).



Marinal Fuel Look VG-87-2YR-CAN

Continuing with our **Immunity+**® line-up, **Boldi V Aptitude**, the #3 proven **Immunity+**® sire, saw gains for GLPI and Milk while holding at +12 for Conformation. In fact, only **Alligator** is higher for type on Lactanet's Top 100 GLPI list and there are no other sires higher for Mammary System on this list (+13 MS)! As his daughters mature, his numbers continue to reflect their improvement and potential for living profitable and productive lives (Herd Life 106, Lactation Persistency 109). **Aptitude**, who also carries the **Robot Ready™** designation, will join **Dealmaker** on our **30 for \$25 Special** as will **Boldi V Gymnast** and **Stantons Adorable**.

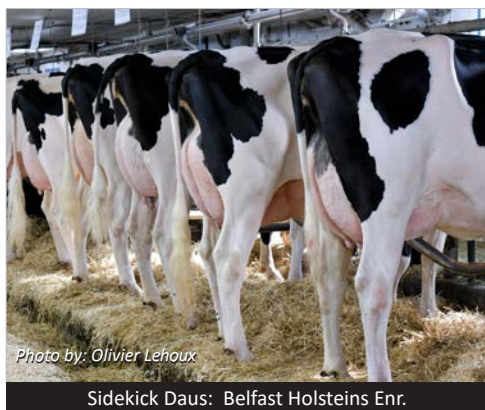
**Gymnast**, a Doorsopen from the time-tested **Atlee-Adeen-Ada** family, will continue to resonate with breeders as a high reliability, elite production sire with positive deviations, solid +7 Conformation, and desirable overall Health & Fertility Improvement (+561).



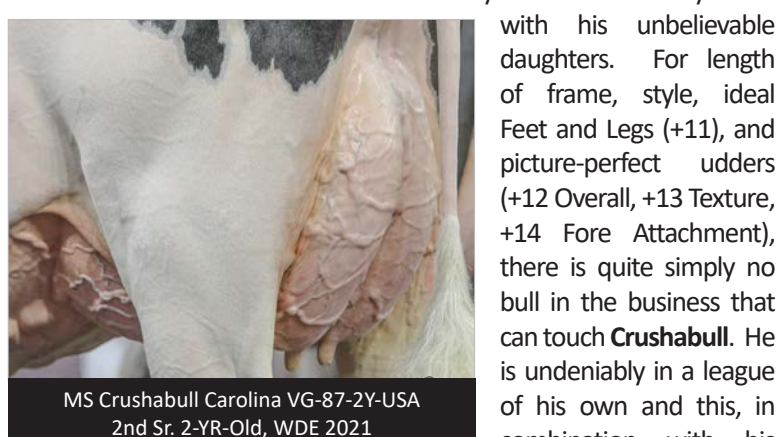
Wrico Gymnast Tilda EX-90-4YR

**Gymnast**, Canada's #5 proven GLPI sire, is also A2A2 designated, and he is an outstanding settler (60 Semen Fertility). **Adorable**, on the other hand, continues to gain fans while becoming one of our most steadily used sires. With 7 sons in the Top 100 GLPI list, including **Alligator** and **Adagio-P**, his 14th generation VG or EX dam is the most reliable source for proven sons in the business today! The richly-bred **Adorable** is ideal for offering pleasing production with outstanding deviations (+.26% Fat, +.23% Protein) and solid type (+10 Overall). He also has the added benefit of being average or better for Feed Efficiency, Herd Life, Mastitis Resistance, Metabolic Disease, Hoof Health, Daughter Fertility, Milking Speed, Temperament, Calving Ability, Daughter Calving Ability, Body Condition Score and Semen Fertility! **Adorable** is available conventional or sexed (on a **Day-to-Day** basis).





Seeing is believing when it comes to Canada's #1 Conformation sire **Walnutlawn Sidekick**. **Sidekick**, who held at +16 for Conformation, can really stamp his daughters with power and strength (+13 Dairy Strength), never-miss Rumps (+10 Overall, +16 Loin), and beautiful udders (+13 Overall, +17 fore attachment numbers).



**Sidekick**, who is an A2A2 carrier and is part of our coveted **Breeders' Edge** group of sires, will be a phenomenal bargain as part of our **30 for \$30 Special** this round. He's also available **Day-to-Day** sexed. Joining **Sidekick** on our **30 for \$30 Special** will be **OH-River-SYC Crushabull** who has absolutely taken the World by storm with his unbelievable daughters. For length of frame, style, ideal Feet and Legs (+11), and picture-perfect udders (+12 Overall, +13 Texture, +14 Fore Attachment), there is quite simply no bull in the business that can touch **Crushabull**. He is undeniably in a league of his own and this, in combination with his sire stack and renowned cow family, made it quite easy for us to add the **Breeders' Edge** designation to this great sire. Of interest, **Holstein Canada's Info Holstein** has **Crushabull** listed in the **Top 10 sires for 305D Fat Production with 100+ Daughters Classified in the last Two-Month Period**. Can you imagine what an influence **Crushabull** could have in your herd! He too will be available as conventional semen or sexed on a **Day-to-Day** basis.

## BREEDER'S EDGE

Toc-Farm  
**ASHTON**Alligator x VG x EX x EX-95 Uno x Toc-Farm Allen Amyly EX-96-ITA  
(Holstein International World Champion 2007)

**Available Soon!**  
(Pre-Purchase Only)

GPA LPI **+3308**  
CONFORMATION **+11**  
MAMMARY SYSTEM **+10**  
FEET & LEGS **+10**  
MILK **+702**  
FAT **+52** %FAT **+23**  
CALVING ABILITY **+102**

GPA 22\*APR

# Exciting **NEW** **Genomax** Leading Genetics Additions to EastGen's Holstein Line-Up

**Dulet KOUFAX** 3553 GPA LPI \$2745 Pro\$ **+10 CONF**  
aAa: 234165 Parachute x VG-86-2YR Lambda x EX-3E 8\*  
x VG-88 16\* x VG-87 14\* x VG-87 16\* x EX 3\* x VG



- ✓ **KOUFAX** will fit into your sire mix easily as a profit-driver with solid milk yields, positive deviations, a balanced type profile, and outstanding health & fertility potential. **KOUFAX** carries the **A2A2** and **Robot Ready™** designations & is limited supply.



**Midas-Touch JAKERS** 3350 GPA LPI \$2012 Pro\$ **+12 CONF**  
aAa: n/a Alleyoop (by Crushabull) x VG-86-2YR King Doc  
the renowned "Shauna" & "Rudy Missy" family



- ✓ **JAKERS** is a unique Alleyoop son which should create quite a buzz. His respected maternal line has been at the root of a lot of top bulls over the years. As an A2A2 carrier, you can expect impressive milk yields, stunning udders, & appealing type.



## Annual Base Change

Canada's genetic base &amp; Pro\$ formula realized in '22 vs '21

MILK	FAT (kg)	PROT (kg)	CONF	PRO\$
107	5.5	4.4	0.83	\$389



## Available Sexed

## NEW Day to Day Additions

		GLPI	Pro\$	MILK	CONF
0777H011893	Progenesis <b>REDDIT</b>	3442	2649	1508	7

## NEW Pre-Purchase Only Sires \*

0777H012330	Novum <b>MERCY</b>	3640	2852	1757	<b>10</b>
0777H011186	Pine-Tree-I <b>PURSUIT</b> <small>GMACE</small>	3548	3061	1499	7
0777H012284	Claynook <b>MAYFAIR</b>	3533	2615	1126	9
0777H012227	Pine-Tree <b>ASPECT RED</b>	3429	2465	2012	7

\* Pre-Purchase Only: Call 1-888-821-2150 to order semen today!

In total, 5 new additions to our expansive sexed semen line-up all processed with SexedULTRA, the most advanced technology in the industry. Our current list of 24 sexed semen sires average over +3372 LPI & +10 for type and includes 12 sires available **Day-To-Day!**