

AYRSHIRE

Four new Ayrshire additions this proof round including the #2 GPA LPI and #1 Pro\$ sire **La Croisee Monaco**. By Magellan, Monaco's dam, **La Croisee Toronto Kanata VG-1YR ELITE**, is the #2 ranked cow for Pro\$ and the full sister to the popular **La Croisee Kingdom**. **Monaco** should make a splash debuting with +3323 GPA LPI, +1011 Milk, +51Fat (+.11%), +49 Protein (+.16%), and a pleasing +9 for Conformation. His daughters will be capacious (+7 Dairy Strength, +8 Rib), with well-attached udders (+8 Mammary System), and with +10 for F&L's, **Monaco** should become a popular addition to our line-up. Exciting early field reports about milking daughters of **Des Mesanges Dalton** have earned him a place in our line-up. The **Immunity+** designated **Dalton** is a Diesel from VG-2YR Amazing from a VG-2YR Bigstar from a VG-87 2* Oreo. He is also the sire of **Laroc Crispers**. **Dalton** is expected to receive his official proof in December, but in the meantime, we're receiving consistent positive feedback on the productivity of his daughters, who are also classifying exceptionally well. **Roi Magellan Maverick** (Magellan x VG-87 Halogen) is our third addition debuting with +3098 GPA LPI, +836 Milk, +24 Fat, +34 Protein, and +13 for Conformation. **Maverick** is a true type specialist that will offer fantastic F&L's (+15), ample Dairy Strength (+12), and quality Mammary Systems (+9 Overall, +11 Texture). Our final addition, **Tilecroft Sombbrero**, is a maternal brother to **Siesta** by Waterloo.

His dam is a VG-87 ELITE Arbiter from a VG-87 ELITE Yellow from a VG-86 1* Revolution, all three have exceptional production records. This balanced sire debuts with +3066 GPA LPI, +1218 Milk, +50 Fat, +48 Protein, and a solid +5 for Conformation.

BROWN SWISS

One new addition this proof round for our Brown Swiss enthusiasts starting with **Sandmatthof Bs Guy Magnum**. Sired by the high type Brown Swiss sire Guy, **Magnum** is from a VG-86 Canyon and then a VG Blooming with over 118,000 lbs. lifetime milk. He can be used to give a solid boost to Milk yields (+814), ideal Mammary Systems (+13), and correct F&L's (+10). We've been able to re-introduce the well-bred **Design** son **Hilltop Acres Top Notch**. **Top Notch** offers a solid production improvement (+566 Milk, +48 Fat, +.25% Fat, +37 Protein, +.16% Protein) and an outstanding type profile (+13 Overall). We've also re-introduced **Hilltop Acres Nashville** (Jonmar x Silver) who is +759 Milk, +39 Fat, +38 Protein, and +11 Conformation. We are also excited to be able to soon offer the Rastaroket



Dalton daughters

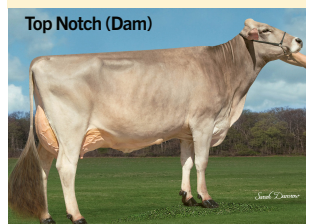


Maverick



Magnum (Dam)

Mimi VG-86-CHE



Top Notch (Dam)

Hilltop Acres K Tammie EX-92

maternal brother to **Nashville**, **Hilltop Acres Rocket Nitro**. **Nitro**, the #3 GPA LPI sire, offers solid Milk (+568), high components (+.25% Fat, +.32% Protein), and is the #2 sire for Conformation with a phenomenal +17!

JERSEY

Lothmann Phantom leads the way as the first of four exciting new sires. He is a Unique Ghost son from a deep and impressive maternal line. His dam is a VG-86-2YR Maverick daughter of the renowned **Swissbell Chrome Ozone EX-93-2E 2*** — a Silver Award and two-time Gold Award winner who was also Nominated 2021 All Ontario Jr. 3-YR. Ozone is backed by a strong pedigree, including a VG-88 5 Blackstone*, a VG-86, and two additional generations of EX dams.

Phantom offers a unique outcross pedigree and a very balanced profile with +574 Milk, +40 Fat (+.14%), +27 Protein (+.06%), and +12 Conformation. Expect daughters with shallow, silky udders (4S Udder Depth, +10 Texture, +10 Fore Attachment), outstanding F&L's (+10), and capacious open frames (+11 Dairy Strength). The next-level

full brothers **Dulet Samba**

and **Simba** are our next two additions. Sired by the elite type sire **Goldorak**. Their dam is from a beautiful VG-87-1YR Boomerang, backed by an EX-91 two-time Gold Medal Chief,

followed by seven more generations of VG or EX dams. **They are the highest sires in the breed in Canada for type with positive Milk, Fat, and Protein ratings!** Both will offer component-rich milk. **Samba** looks to offer slightly higher yields (+418 Milk, +54 Fat, +36 Protein) while **Simba** appears to offer slightly higher Conformation with +18 (vs +16 for **Samba**). Our final Jersey, **Lencrest Sunbeam**, is a Unique Skyfall son with a strong maternal line.

His dam is an impressive VG-86-2YR Channing, daughter of the exceptional **Cocopuff EX-93-3E 4***. In addition to his stellar pedigree, **Sunbeam** debuts with over 2000 GPA LPI (+2026), +427 Milk, +60 Fat (+.46%), +34 Protein (+.21%) and an exciting +14 for Conformation. This balanced-profile and outstanding overall type, **Sunbeam** is Canada's #1 sire for Dairy Strength with +16. All four of these new additions to our list offer fresh opportunities for breeders aiming to combine elite type, production, and pedigree depth.

GUERNSEY & MILKING SHORTHORN (MS):

Coule Crest Carver remains our #1 Guernsey sire with +1233 LPI. We have added the **Oceanbrae Foster** (+1796 GLPI) to our MS list. Additionally, **Foster** is the #2 Conformation sire (+11). We are able to offer the #1 genomic sire **Oceanbrae Generator** as **Pre-Purchase Sexed**.



Dulet
SIMBA & SAMBA

Goldorak x Boomerang



Sunbeam's Dam

Lencrest Channing Cocopuff VG-86-2YR



Camflat Foster Melanie - Foster dau.