

Photo: Zosia Hunt

EastGen
Lactanet 25*Dec
www.eastgen.ca
P: 1-888-821-2150

BREEDER'S EDGE

0200HO12399
KINGS-RANSOM



0200HO12529
MR ERNESTANTHONY



Dropbox
HIGHJUMP x CASPER x DELTA

Havenofear
LAMBDA x DOC x JEDI

UNIX

King of the Ring
3X World Dairy Expo Premier Sire,
2X Royal Agricultural Winter Fair Premier Sire

SIDEKICK

Sire of Grand Champions in 2025 at: World-Dairy Expo,
East Fall National Show, North East National Show,
Atlantic Dairy Championship Show, Autumn Opportunity Show



Photo: Cowsmo



Photo: Cowsmo

Dau. **EX-97-3E-CAN**
ALTONA LEA UNIX HERMINIE

★ 1st Mature Cow World Dairy Expo, 2025

Dau. **EX-96-2E-USA**
LOVHILL SIDEKICK KANDY CANE

★ Grand Champion World Dairy Expo, 2025



Photo: Andrew Hetke

Daughters: L - Oakfield Dropbox Sweetie VG-88-2YR-USA
R - Genosource Hide Out VG-89-2YR-USA

	GMACE LPI	Milk	Fat	Prot	Conf	MS	F&L	DS	RP
Dropbox	+3454	+409	+68 (+.44%)	+56 (+.36%)	+9	+7	+6	+4	+8
Havenofear	+3373	+921	+22 (-.12%)	+58 (+.21%)	+12	+8	+8	+10	+6

Semex Embryos deliver.

You can skip two or three generations with just one breeding. No more waiting and hoping you reach your goals; it's guaranteed.

Conventional and Sexed Embryos available from these families plus more!



DULET D-LAMBDA KATRINA EX-90-5YR-CAN 6*



MYSTIQUE LAMBDA ANIS EX-93-2E-CAN 9*



LADYROSE CAUGHT YOUR EYE EX-95-5YR-USA 2*

For more details or to make an order, contact:

Western/Central/Northern ON
Matt Forestell matt.forestell@eastgen.ca
(613) 391-9211

Eastern ON/Atlantic Region
Kris MacLeod kris.macleod@eastgen.ca
(613) 297-4621

0200HO13416
JACOBS

Bear

GENOMAX
ANAHITA x DESTINATION

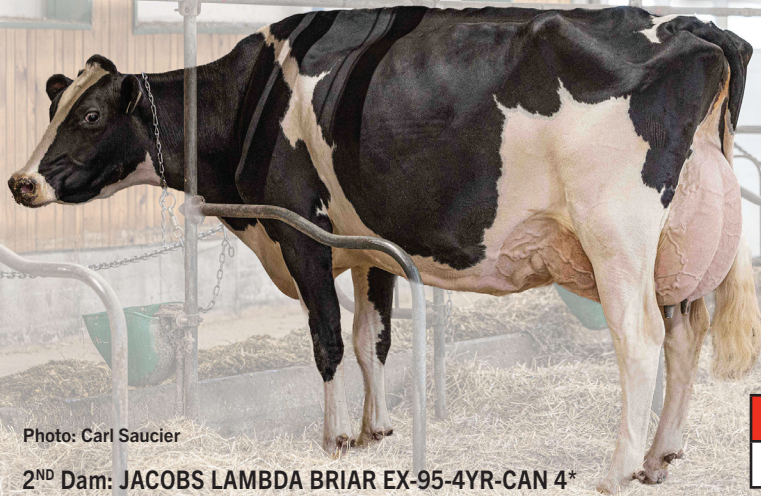


Photo: Carl Saucier

2ND Dam: JACOBS LAMBDA BRIAR EX-95-4YR-CAN 4*

GPA LPI	Milk	Fat	Prot	Conf	MS	F&L	DS	RP
+3663	+1045	+50 (+.09%)	+33 (-.01%)	+16	+12	+12	+8	+9



Photo: Carl Saucier

0200HO13403
WALNUTLAWN PG

Lowestory

GENOMAX IMMUNITY+
ANAHITA x DESTINATION



Photo: Holly McFarlane

Dam: WALNUTLAWN DESTINATION LOVE VG-86-2YR-CAN

GPA LPI	Milk	Fat	Prot	Conf	MS	F&L	DS	RP
+3740	+886	+44 (+.08%)	+24 (-.04%)	+18	+14	+16	+9	+6



Photo: Carl Saucier

0200HO13032
COMESTAR

Larizio

GENOMAX ROBOTREADY AZAZ FERTILITY FIRST IMMUNITY+
DROPBOX x PERFECT



Photo: Claire Swale

Owned by: Bokma Farms Ltd. & Vector Genetics

Dam: COMESTAR LATINET PERFECT VG-89-4YR-CAN 1*

GPA LPI	Milk	Fat	Prot	Conf	MS	F&L	DS	RP
+3689	+502	+85 (+.55%)	+50 (+.27%)	+13	+11	+9	+6	+4



Photo: Holly McFarlane

0200JE01600
DULET

Samba

GENOMAX AZAZ
GOLDORAK x BOOMERANG



Photo: Holly McFarlane

Sire: DULET GOLDORAK

Dam: DULET BOOMERANG SALLY VG-89-3YR-CAN



Photo: Sheila Sundborg



Photo: Carl Saucier

GPA LPI	Milk	Fat	Prot	Conf	MS	F&L	DS	RP
+2013	+458	+54 (+.38%)	+35 (+.22%)	+17	+14	+10	+13	+6

0200HO12946
FEPRO

Lindt

GENOMAX CALVING EASE
LAMBDA x PERFECT



Photo: Vicki Fletcher

Dam: FEPRO PERFECT LINDOR VG-88-4YR-CAN

GPA LPI	Milk	Fat	Prot	Conf	MS	F&L	DS	RP
+3738	+729	+58 (+.24%)	+31 (+.03%)	+16	+11	+13	+11	+7



Photo: Holly McFarlane

0200JE01320
LENCREST

Tobefamous

AZAZ
JX CHIEF(6) x PREMIER



Photo: Holly McFarlane

Dam: LENCREST PREMIER FARREN EX-92-4E 2*

Daus.: L-R,
Lahetriere Tobefamous
Stella VG-87-2YR &
Lahetriere Tobefamous
Sandrine VG-86-1YR



Photo: Lyse Neuville



Photo: Holly McFarlane

GLPI	Milk	Fat	Prot	Conf	MS	F&L	DS	RP
+2107	+367	+72 (+.67%)	+20 (+.08%)	+14	+12	+14	+6	+3