

Elite Milk & Type

NEW



Genetic Advisor Notes

- Mystique Alcaraz is a +15 Conformation Anahita son with A2A2 designation and more than +1500 kg Milk
- His Dam is a VG-86-2YR sired by the popular bull Alligator!
- With many generations of VG and EX and double digits on Mammary System, Feet & Legs, and Dairy Strength, Alcaraz can add a lot to your herd.

Anthony Jeffrey

MYSTIQUE **ALCARAZ**

0200HO13515 HOCANM121691616
 ANAHITA x ALLIGATOR x FUEL

You Pay \$27

GPA LPI/IPV MPG +3586 PRO\$ \$1629

M/L +1563 F/G +53 (-0.09) P +48 (-0.05) Conf. +15



Dam: MYSTIQUE ALLIGATOR ALCATRAZ
 VG-86-2YR-CAN

Technician's Choice High Fertility + Calving Ability



Genetic Advisor Notes

- Kamikaze, a Network son from the EX 90 5* Dulet D-Lambda Katrina carrying the Immunity+, Robot Ready and A2A2 designations.
- He is an extremely fertile sire with Semen Fertility ranking of +66, 5 points above breed average.
- Kamikaze has exceptional health and reproductive traits including Herd Life, Somatic Cell Score and Mastitis Resistance.
- Kamikaze can be used on cows that need improvement on Rear Attachment Height and Width.

Terry Green

PROGENESIS **KAMIKAZE**

0200HO12767 HOCANM14259402
 NETWORK x LAMBDA x DIAMOND

You Pay \$22

GPA LPI/IPV MPG +3569 PRO\$ \$2516

M/L +1434 F/G +67 (+0.08) P +55 (+0.05) Conf. +6



Dam: DULET D-LAMBDA KATRINA
 EX-90-5YR-CAN 5*

Elite Milk & Type

NEW



Genetic Advisor Notes

- Rare Polled Anahita son from Leyhigh PP's family.
- Over +1400 kg Milk & over +100 kg combined Fat & Protein as well as +13 Conformation should make him of interest to all producers.
- Expect high type with ideal moderate Stature (1S). He also has wider Rear Teat Placement (5W) combined with positive Median Suspensory Ligament and they will have great Rear Udders (+12 Height, +13 Width).

Kris MacLeod

PROGENESIS **LIGHTSHIP-P**

0200HO13399 HOCANM15070876
 ANAHITA x DESTINATION x LAMBDA

You Pay \$25

GPA LPI/IPV MPG +3550 PRO\$ \$1765

M/L +1423 F/G +62 (+0.06) P +40 (-0.06) Conf. +13



2nd Dam: DREWHOLME LAMBDA LEYSURE P
 EX-92-5YR-CAN 5*

Elite Polled



Genetic Advisor Notes

- Michelob-PP is a homozygous polled, Red factor son of Drewholme Leyhigh-PP.
- Michelob-PP gives you almost +1000 kg of Milk, with combined Fat and Protein of over +100 kg.
- Michelob-PP will also improve the udders in your herd, with nice wide and high rear udders, and longer teats at 5L.
- The daughters will be medium sized with nice square, wide rumps.
- A bull you can easily use on your heifers as he is +103 for Calving Ease.
- With many generations of VG and EX behind him, you can feel confident when using Michelob-PP.

Jens Krause

NORTH-POLLED **MICHELOB-PP *RC**

0200HO13513 HOCANM15082711
 LEYHIGH PP x RANGER-RED x LOYOLA-P *RC

You Pay \$25

GPA LPI/IPV MPG +3467 PRO\$ \$1731

M/L +952 F/G +63 (+0.21) P +49 (+0.12) Conf. +11



Dam: NORTH-POLLED RANGER MIRACLE P
 VG-87-3YR-CAN

Elite Type



3rd Dam: WALNUTLAWN ABBOTT BREEZE
EX-91-3E-CAN 1*

WALNUTLAWN PG BERKLEY
You Pay \$27 While supplies last!

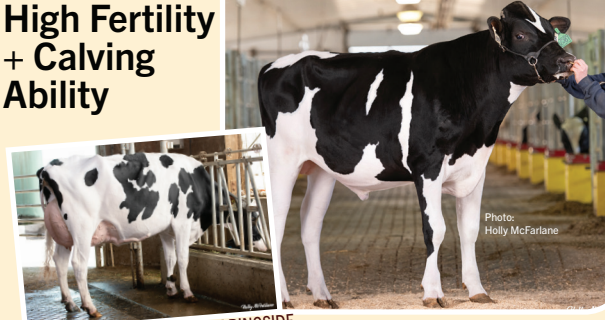
Genetic Advisor Notes

- An Immunity+ and A2A2 sire with a impressive +14 Conformation.
- Respectable production with positive deviations. Also solid health and fertility traits across the board.
- Berkley will make great Feet and Legs at +13 and will also improve Rump Structure.

Jake Jansema

Technician's Choice

High Fertility + Calving Ability



Dam: PROGENESIS ZAZZLE RINGSIDE
EX-90-CAN

PROGENESIS RESURGENCE *RC
You Pay \$20 While supplies last!

Genetic Advisor Notes

- An Immunity+ sire with fantastic Bull Fertility rated at +63.
- A Red Carrier Ranger son that will make correct Feet, and ideal Rumps and Thurls on his daughters.
- A tremendous Fat improver at 99 kg (+.71%).

Allison Spence

Elite Milk



Dam: SIEMERS DRBO HANAN 39846
VG-86-2YR-USA

SIEMERS HUMPY-PP
You Pay \$27 While supplies last!

Genetic Advisor Notes

- Siemers Humpy-PP is a +10 Conformation, 100% Polled, and an A2A2 Magneto PP son with +1300 Milk, +67 kg Fat (+0.12%), +56 kg Protein (+0.08%).
- His VG-86-2YR dam is from the Siemers breeding program by the popular bull Dropbox, that has multiple generations of VG and EX dams, going back to Cookiecutter Mom Halo VG-88.
- His daughters should be great milking cows that have wide Rear Udders +8, wide Pin Width +1.3, great Rib Structure +13, along with great Udder Texture +6, and Median Suspensory +5.

Derek Kennie

Elite Polled & Type



Dam: DREW HOLME CONWAY LEYSURE
VG-88-3YR-CAN

PROGENESIS LEONARDO-P *RC
You Pay \$22 While supplies last!

Genetic Advisor Notes

- One of our most complete Ambrose sons at over +1000 kg Milk and +13 Conformation.
- A sire who carries the A2A2 and RC brands amongst double digits for Mammary, Dairy Strength, and Rump. His mother is an 88 pt. sister to our very popular Leyhigh PP.
- Expect high (+11) and wide (+9) Rear Udders along with +8 Fore Udder. These angular strong-joined cows will last in your herd with his +105 Herd Life. Strong Fat and Protein deviations make him an enticing choice for many breeding strategies.

John Hedden

Designations Désignations	0200HO	East Gen	February / février 2026 LACTANET*12/25	Sire MGS / Père GPM	Production						Conformation					Health & Management / Caractères de santé et de fertilité										
					GPA LPI IPV MPG	Pro \$	Milk / Lait (kg)	Fat / Gras (kg)	% Dev. / Différ.	Protein (kg) Prot.	% Dev. / Différ.	Conformation	Mamm Syst. Mamm.	F&L Pieds et membres	Dairy Strength Puissance laitière	Rump / Croupe	Herd Life Durée de vie	Mastitis Resistance Résistance à la mammité	Dau Fertility Fertilité des filles	Milking Speed Vit. traite	Milking Temp. Temp. traite	Calving Ability Apt. au vêlage	Dau Calving Ability Apt. des filles au vêlage	Immunity Immunité	Calif Immunity Immunité du veau	Bull Fertility Fertilité du taureau
	13211	Walnutlawn PG BERKLEY	Ambrose RC x Parfect	3765	2139	881	85	.42	58	.22	14	8	13	11	8	105	104	97	94	100	101	98	106	102	-	27
	13515	Mystique ALCARAZ	Anahita x Alligator	3586	1629	1563	53	-.09	48	-.05	15	12	10	10	6	102	100	102	101	97	97	95	93	98	-	27
	13399	Progenesis LIGHTSHIP-P	Anahita x Destination	3550	1765	1423	62	.06	40	-.06	13	11	8	7	5	105	99	99	95	102	98	97	101	102	-	25
	13513	North-Polled MICHELOB-PP	Leyhigh PP x Ranger-Red	3467	1731	952	63	.21	49	.12	11	10	6	5	9	103	95	93	99	101	103	101	93	94	-	25
	13265	Progenesis LEONARDO-P	Ambrose RC x Conway	3441	1804	1026	60	.15	50	.12	13	10	4	10	10	105	98	94	97	103	100	102	96	97	-	22
	13463	Siemers HUMPY-PP	Magneto PP x Dropbox	3362	1778	1300	67	.12	56	.08	10	7	6	9	8	97	102	94	99	103	98	100	98	98	-	27
	12589	Progenesis RESURGENCE RC	Ranger-Red x Zazzle	3722	2471	404	99	.71	57	.34	8	5	8	6	6	107	103	97	96	101	103*	105	106	106	63*	20
	12767	Progenesis KAMIKAZE	Network x Lambda	3569	2516	1434	67	.08	55	.05	6	7	1	2	1	109	105	103	101	98	101*	102	107	104	66*	22
	13405	Dulet KYLIAN	Zoar x Parfect	3639	2191	654	104	.66	60	.30	7	3	6	8	7	103	100	101	101	100	97	102	104	100	-	18