



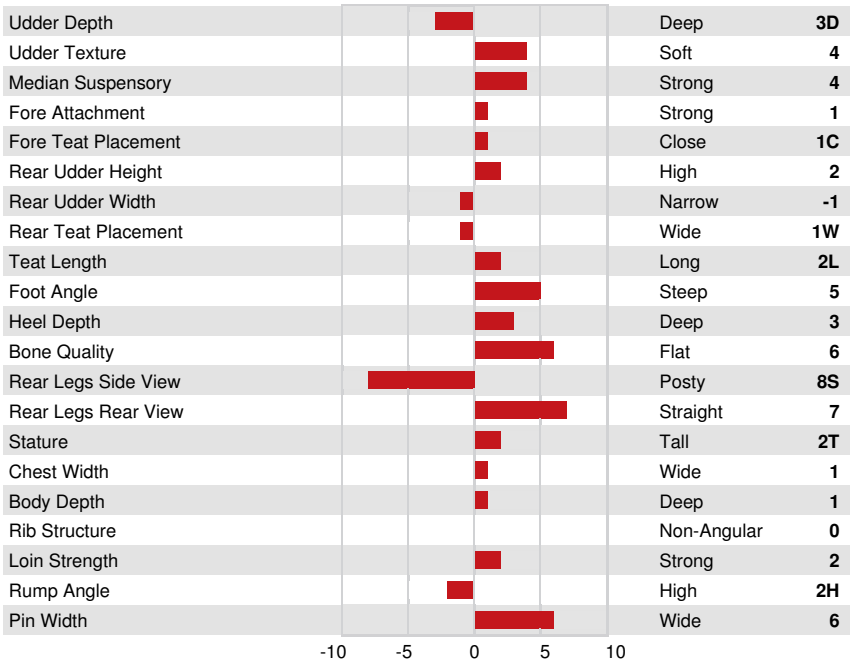
CALVING EASE

AMIGHETTI NUMERO UNO
 REGANCREST DORCY BENISHEY VG-85-2YR-USA
 COYNE-FARMS DORCY
 REGANCREST M BENISHA VG-87-4YR-USA
 REGANCREST-HHF MAC
 REGANCREST BREESHIA

GLPI +3000 PRO\$ 29	
DPF RDF BLF CNF XIF BYF MWF CVF	HH1F HH2F HH3F HH4F HH5F HH6F HCDF HMWF
Reg. #: HOUSAM72090535	aAa: 243651 DMS: 246
Born: 01/09/2013	Kappa Casein: AE Beta Casein: A1A2
PRODUCTION	124 Herds 174 Daughters 98% Rel GEBV 26*APR
Milk kg -705	Fat kg 4 Fat % +0.26 Protein kg -32 Protein % -0.06
Milking Speed 105	Milking Temperament 100 Methane Efficiency 106 Feed Efficiency 97 BMR 96
Daughter Average (ME) Milk 11,499 kg Fat 474 kg Protein 370 kg	

HEALTH & REPRODUCTION		Immunity 96
Herd Life 105	Calf Immunity 95	
Somatic Cell Score 96	Calving Ability 95	
Daughter Fertility 110	Daughter Calving Ability 98	
Body Condition Score 100	Metabolic Disease Resistance 97	
Mastitis Resistance 95	Calf Health 110	
Lactation Persistence 95		

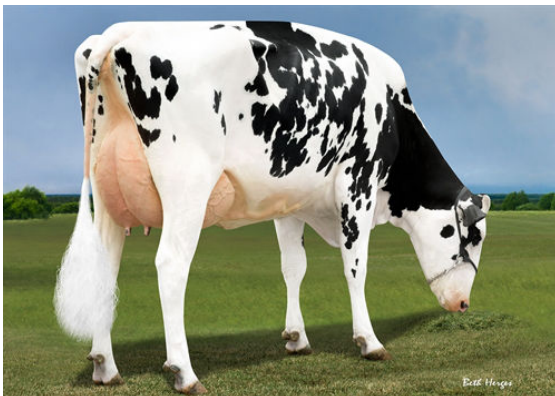
CONFORMATION	112 Herds 166 Daughters 95% Rel GEBV 26*APR
Conformation 5	Dairy Strength 2
Mammary System 3	Rump 4
Feet & Legs 7	GP or Better % 72



BRIGHAM DAUGHTER GROUP
 MEADOWOOD BRIGHAM CAILY and MEADOWOOD BRIGHAM CAYLA



THEATER



DANHOF BRIGHAM LISA