



MAVERICK-I CRUSH

OH-RIVER-SYC MOGAL BRYLAN VG-87-4YR-USA

MOUNTFIELD SSI DCY MOGUL

OH-RIVER-SYC MRDN BILLIE EX-91-4YR-USA

SULLY HART MERIDIAN

SANDY-VALLEY ATWD BARBIE EX-91-5YR-USA

GLPI +2785 PRO\$ -304

EX-92-CAN DPF RDF BLF CNF BYF MWF CVF HH1F HH2F HH3F HH4F HH5C HH6F HCDF HMWF

Reg. #: HO840M3135145001 aAa: 324165 DMS: 126
 Born: 03/10/2017 Kappa Casein: BE Beta Casein: A1A2

PRODUCTION 915 Herds 2490 Daughters 99% Rel GEBV 25*APR

Milk kg	Fat kg	Fat %	Protein kg	Protein %
-270	-39	-0.25	-14	-0.04
Feed Efficiency	BMR	Methane Efficiency		
96	98	103		

Daughter Average (ME) Milk **12,963 kg** Fat **507 kg** Protein **419 kg**

HEALTH & REPRODUCTION Immunity **93**

Herd Life	100	Calf Immunity	104
Somatic Cell Score	95	Calving Ability	93
Daughter Fertility	99	Daughter Calving Ability	99
Body Condition Score	91	Milking Speed	103
Mastitis Resistance	93	Milking Temperament	103
Lactation Persistence	97	Metabolic Disease Resistance	90

CONFORMATION 781 Herds 2097 Daughters 99% Rel GEBV 25*APR

Conformation	11	Dairy Strength	3
Mammary System	11	Rump	3
Feet & Legs	9	GP or Better %	88

Udder Depth		Shallow	6S
Udder Texture		Soft	12
Median Suspensory		Strong	1
Fore Attachment		Strong	12
Fore Teat Placement		Close	10C
Rear Udder Height		High	5
Rear Udder Width		Wide	3
Rear Teat Placement		Close	2C
Teat Length		Short	2S
Foot Angle		Steep	3
Heel Depth		Deep	6
Bone Quality		Flat	16
Rear Legs Side View		Sickle	14C
Rear Legs Rear View		Straight	5
Stature		Tall	6T
Chest Width		Narrow	-6
Body Depth		Deep	4
Rib Structure		Angular	6
Loin Strength		Strong	6
Rump Angle		High	1H
Pin Width		Wide	3

-10 -5 0 5 10



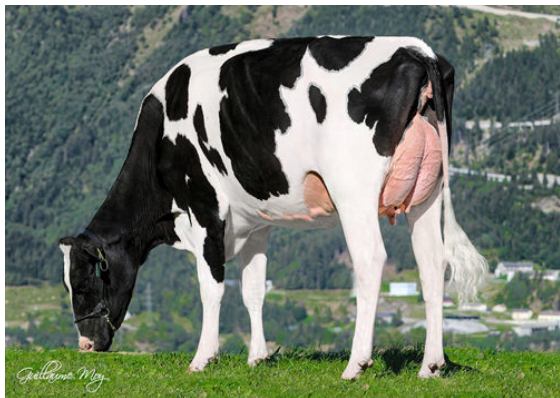
PANDA PURE GOLD RED

DAUGHTER



HOWARD-VIEW CRSBUL DISCODANCER

DAUGHTER



DG CRUSHABULL ATLANTIS

DAUGHTER