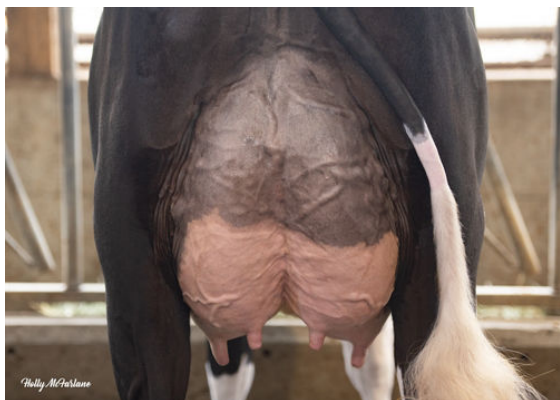




PEAK HOTJOB
 PROGENESIS GTEE CABERNET RED VG-87-4YR-CAN
 WESTCOAST GUARANTEE
 HOLLENDALE JEDI CRIM-RED VG-88-5YR-USA 2*
 S-S-I MONTROSS JEDI
 RI-VAL-RE TG CRIMSON-RED VG-86-2YR-USA



PROGENESIS CHAMPION PALAZZO
 DAUGHTER



PROGENESIS CHAMPION PALAZZO
 DAUGHTER



PROGENESIS CHAMPION TIANNA
 DAUGHTER

GLPI +2926 PRO\$ 1277
 DPF BKC RDF BLF BYF MWF CVF HH1F HH2F HH3F HH4F HH5F HH6F HCDF HMWF

Reg. #: HOCANM13567622 aAa: 432561 DMS: 561,135
 Born: 11/15/2019 Kappa Casein: AB Beta Casein: A2A2

PRODUCTION		24 Herds	45 Daughters	93% Rel	GEBV 25*APR	
Milk kg	Fat kg			Fat %	Protein kg	Protein %
711	48			+0.17	37	+0.10
Feed Efficiency	BMR			Methane Efficiency		
97	97			100		

Daughter Average (ME) Milk **13,774 kg** Fat **599 kg** Protein **463 kg**

HEALTH & REPRODUCTION		Immunity 102	
Herd Life	102	Calf Immunity	95
Somatic Cell Score	100	Calving Ability	103
Daughter Fertility	101	Daughter Calving Ability	107
Body Condition Score	102	Milking Speed	100
Mastitis Resistance	105	Milking Temperament	99
Lactation Persistence	89	Metabolic Disease Resistance	106

CONFORMATION		21 Herds	40 Daughters	89% Rel	GEBV 25*APR	
Conformation	-3	Dairy Strength		0		
Mammary System	3	Rump		-9		
Feet & Legs	-8	GP or Better %		60		

