



PEAK JARVIS
 PROGENESIS RANGER KAYLYNN VG-88-3YR-CAN
 3STAR OH RANGER RED
 DULET D-LAMBDA KATRINA EX-90-5YR-CAN 6*
 FARNEAR DELTA-LAMBDA
 DULET DIAMOND KARVY EX-90-5E-CAN 10*

GPA LPI +3513 PRO\$ 1940

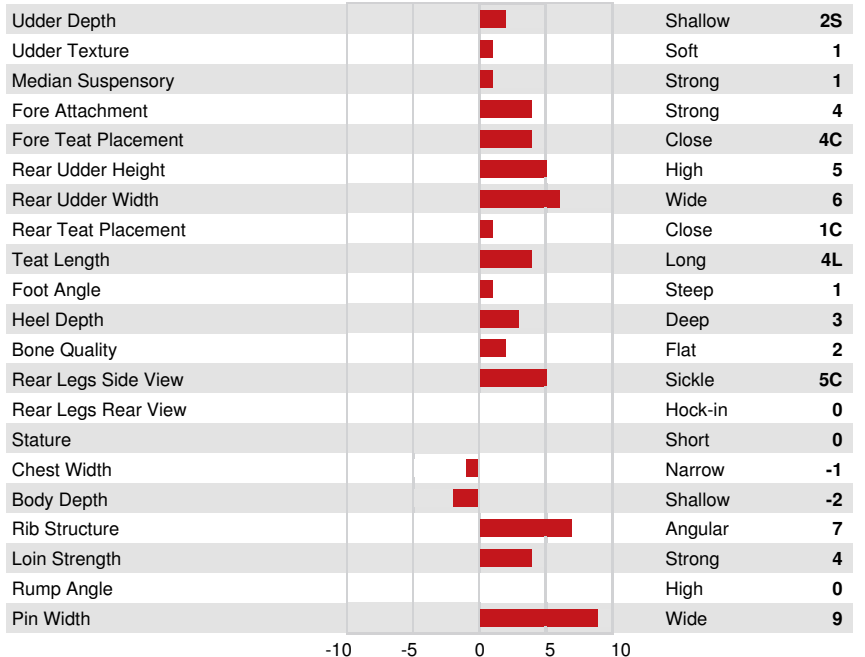
DPF RDF BLF CNF BYF MWF CVF HH1F HH2F HH3F HH4F HH5F HH6F HCDF HMWF

Reg. #: HOCANM14567312 aAa: 243165 DMS:
 Born: 09/05/2023 Kappa Casein: AA Beta Casein: A2A2

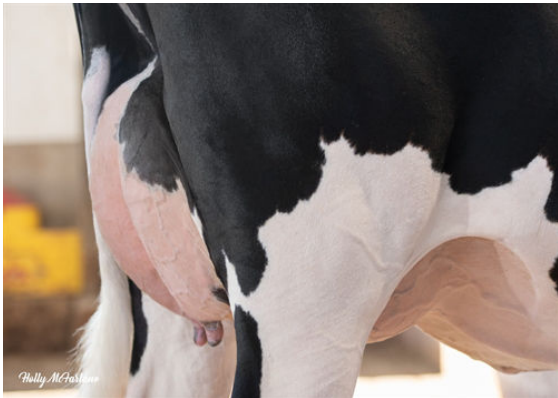
| PRODUCTION | | G Herds | G Daughters | 82% Rel | GPA 26* APR | |
|---------------------|-----|---------|-------------|--------------------|-------------|-----------|
| Milk kg | 592 | | | Fat % | +0.37 | Protein % |
| Fat kg | 67 | | | Methane Efficiency | 99 | BMR |
| Protein kg | 39 | | | Feed Efficiency | 105 | 98 |
| Milking Speed | 100 | | | | | |
| Milking Temperament | 102 | | | | | |

| HEALTH & REPRODUCTION | | Immunity | 101 |
|-----------------------|-----|------------------------------|-----|
| Herd Life | 108 | Calf Immunity | 97 |
| Somatic Cell Score | 101 | Calving Ability | 103 |
| Daughter Fertility | 99 | Daughter Calving Ability | 103 |
| Body Condition Score | 99 | Metabolic Disease Resistance | 105 |
| Mastitis Resistance | 104 | Calf Health | 92 |
| Lactation Persistence | 98 | | |

| CONFORMATION | | G Herds | G Daughters | 79% Rel | GPA 26* APR | |
|----------------|---|---------|-------------|----------------|-------------|--|
| Conformation | 8 | | | Dairy Strength | 5 | |
| Mammary System | 7 | | | Rump | 5 | |
| Feet & Legs | 3 | | | | | |



PROGENESIS RANGER KAYLYNN
DAM



PROGENESIS RANGER KAYLYNN
DAM



DULET D-LAMBDA KATRINA
GRANDDAM