



SIEMERS PARBO *RC
 SIEMERS GD PARIS 36374 VG-85-3YR-USA
 RMD-DOTTERER SSI GAMEDAY
 SIEMERS MARK PARIS 31989 VG-85-2YR-USA
 WILDER MARK *RC
 SIEMERS GRNT PARIS 28196 VG-85-2YR-USA

GPA LPI +3479 PRO\$ 1932

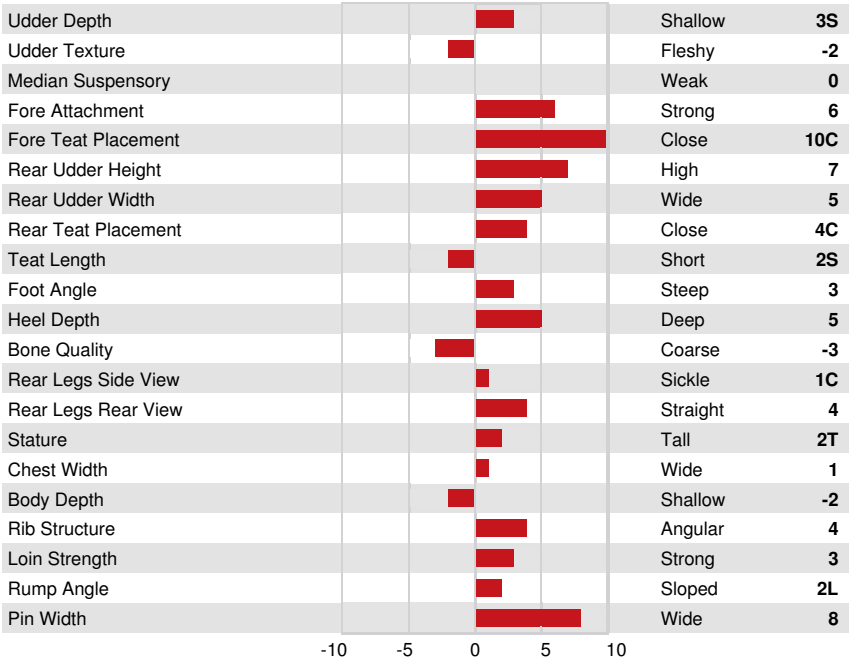
DPF BLF CNF BYF MWF CVF HH1F HH2F HH3F HH4F HH5F HH6F HCDF HMWF

Reg. #: HO840M3272850863 aAa: 234156 DMS: 345,234
 Born: 11/28/2023 Kappa Casein: AB Beta Casein: A1A1

PRODUCTION		G Herds	G Daughters	81% Rel	GPA 26*APR	
Milk kg	531			Fat %	+0.25	Protein %
Fat kg	50			Methane Efficiency	105	BMR
Protein kg	37			Feed Efficiency	103	99
Milking Speed	102			Milking Temperament	101	

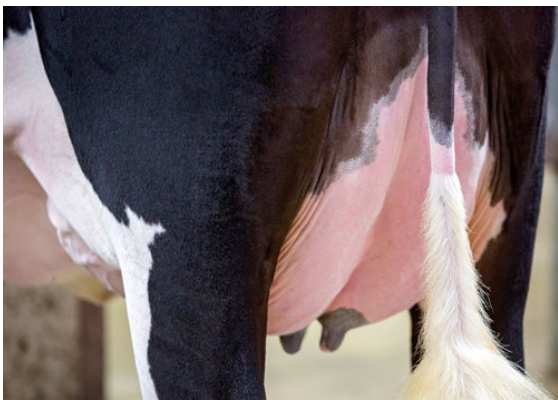
HEALTH & REPRODUCTION		Immunity	106
Herd Life	108	Calf Immunity	103
Somatic Cell Score	101	Calving Ability	105
Daughter Fertility	100	Daughter Calving Ability	106
Body Condition Score	100	Metabolic Disease Resistance	105
Mastitis Resistance	101	Calf Health	97
Lactation Persistence	94		

CONFORMATION		G Herds	G Daughters	78% Rel	GPA 26*APR	
Conformation	7			Dairy Strength	3	
Mammary System	6			Rump	6	
Feet & Legs	4					



SIEMERS GD PARIS 36374

DAM



SIEMERS GD PARIS 36374

DAM