



PROGENESIS ANAHITA
 PROGENESIS WC 14974 VG-85-3YR-CAN
 WESTCOAST LAMBEAU
 SHELAND PERFECT DAYBREAK EX-90-5YR-CAN 1*
 SIEMERS RENG D PERFECT
 SHELAND DUKE DAYLILY VG-85-2YR-USA

GPA LPI +3739 PRO\$ 2094

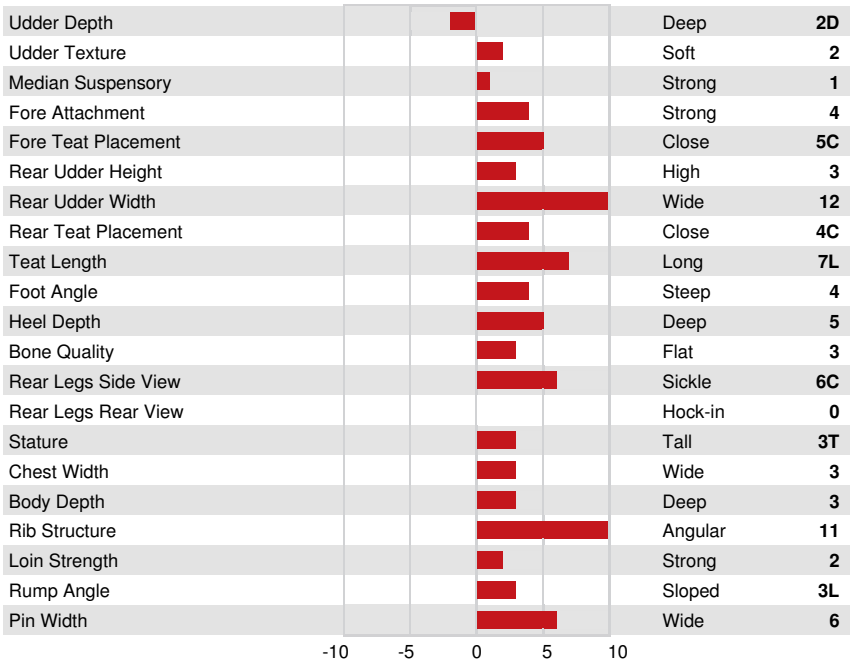
DPF RDF BLF BYF MWF CVF HH1F HH2F HH3F HH4F HH5F HH6F HCDF HMWF

Reg. #: HOCANM14890715 aAa: DMS:
 Born: 08/20/2024 Kappa Casein: AB Beta Casein: A2A2

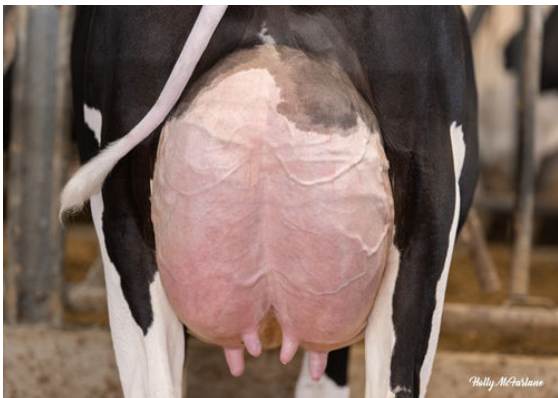
PRODUCTION		G Herds	G Daughters	82% Rel	GPA 26* APR				
Milk kg	973	Fat kg	106	Fat %	+0.57	Protein kg	58	Protein %	+0.20
Milking Speed	99	Milking Temperament	102	Methane Efficiency	104	Feed Efficiency	104	BMR	95

HEALTH & REPRODUCTION		Immunity 95	
Herd Life	100	Calf Immunity	94
Somatic Cell Score	96	Calving Ability	96
Daughter Fertility	104	Daughter Calving Ability	98
Body Condition Score	97	Metabolic Disease Resistance	96
Mastitis Resistance	97	Calf Health	103
Lactation Persistence	99		

CONFORMATION		G Herds	G Daughters	79% Rel	GPA 26* APR	
Conformation	10	Dairy Strength	10			
Mammary System	6	Rump	5			
Feet & Legs	6					



SHELAND PERFECT DAYBREAK
GRANDDAM



SHELAND PERFECT DAYBREAK
GRANDDAM



SHELAND PERFECT DAYBREAK
GRANDDAM