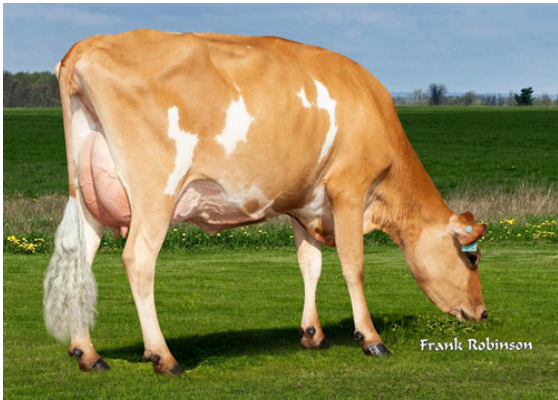




JX PROGENESIS MACHOMAN {5}
 JX PROGENESIS CINDERELLA {6} DES-77%-4YR-USA
 JX SUNSET CANYON GOT MAID {5}
 PROGENESIS CRAZE CORDE {6} EX-90%-5YR-USA
 RIVER VALLEY CIRCUS CRAZE
 JX PROGENESIS GRACE TOO {5} DES-73%-2YR-USA



JX PROGENESIS CINDERELLA {6}
DAM



PROGENESIS CRAZE CORD {6}
GRANDDAM



PROGENESIS CRAZE CORD {6}
GRANDDAM

GPA LPI +2094 PRO\$ 2403 JH1F JNSF

Reg. #: JE840M3209774793 aAa: 435162 DMS: 246,126
 Born: 03/14/2022 Kappa Casein: BB Beta Casein: A2A2

PRODUCTION		G Herds	G Daughters	64% Rel	GPA 25*DEC	
Milk kg	1049			Fat kg	70	
Milking Speed	98			Fat %	+0.20	
				Protein kg	52	
				Protein %	+0.13	
				Milking Temperament	103	

HEALTH & REPRODUCTION		Immunity	103
Herd Life	105	Calf Immunity	100
Somatic Cell Score	108	Calving Ability	103
Daughter Fertility	101	Daughter Calving Ability	103
Body Condition Score	100	Metabolic Disease Resistance	100
Mastitis Resistance	107		
Lactation Persistence	99		

CONFORMATION		G Herds	G Daughters	52% Rel	GPA 25*DEC	
Conformation	7			Dairy Strength	4	
Mammary System	7			Rump	-1	
Feet & Legs	1					

